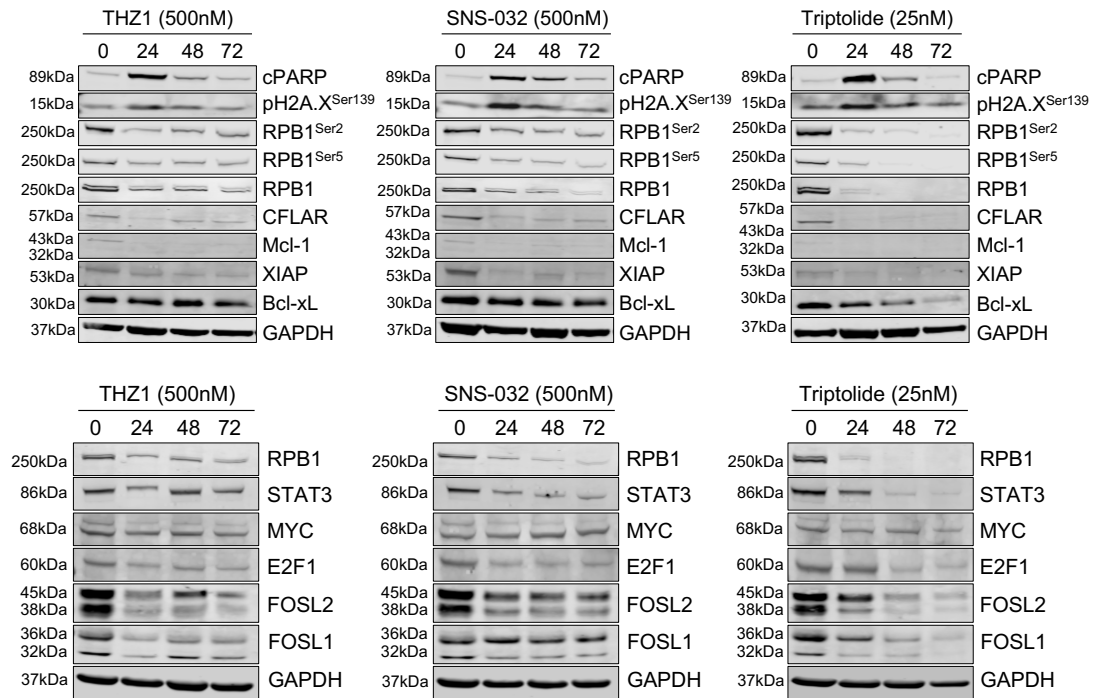
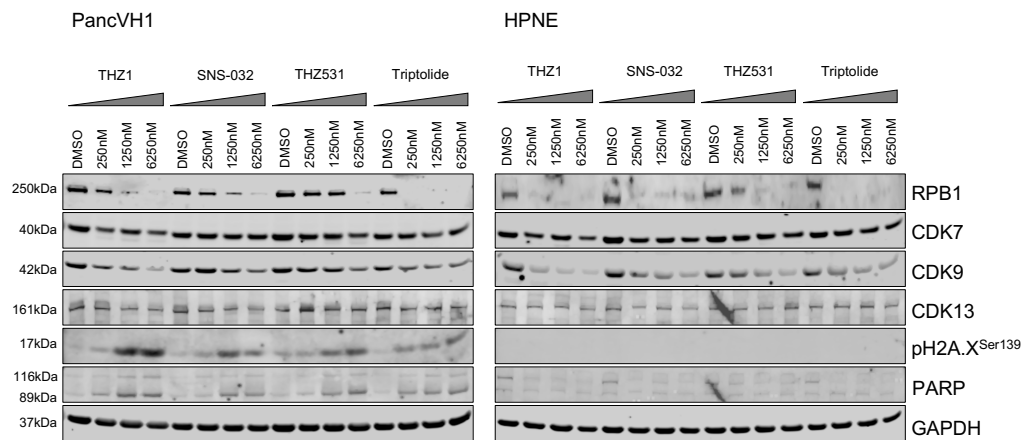


A



B



C

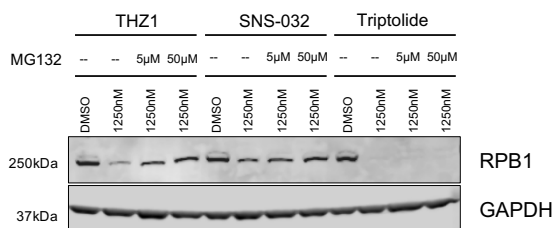


Figure S6. Extended Data. A. TFIIF inhibition time course with THZ1 (500nM), SNS-032 (500nM), Triptolide (25nM) demonstrating decreased phosphorylation of the carboxy terminal domain (CTD) heptapeptide (1-52) on serine residues RPB1^{Ser2} and RPB1^{Ser5} as well as decreased expression of RPB1/Pol II, CFLAR, MCL1, XIAP, and Bcl-xL (top), and STAT3, E2F1, FOSL2, and FOSL1 (bottom) in PancVH1 with concomitant increase of pH2A.X^{Ser139} and PARP cleavage; drug concentrations (nM); immunoblots probed with antibodies to indicated proteins; GAPDH loading control. **B.** TFIIF transcriptional dependency in PancVH1 versus HPNE. Dose dependent TFIIF inhibition (THZ1, SNS-032, Triptolide) and the transcriptional kinase CDK13 (THZ531) in PancVH1 and HPNE cells; drug concentrations (nM); 24hr; immunoblot probed with antibodies to indicated proteins; GAPDH loading control. **C.** Dose dependent TFIIF inhibition (THZ1, SNS-032, Triptolide) resulting in decreased RNA polymerase II Subunit B1 (RPB1/Pol II) expression is partially mediated by the proteasome, especially for THZ1 and SNS-032 in PancVH1, while transcriptional repression of RPB1 by TFIIF (XPB) inhibition via Triptolide is not rescued by MG132 proteasome inhibition; drug concentrations indicated; 24hr; immunoblot probed with antibody to RPB1; GAPDH loading control.