

**Supplemental information**

**Deletion of mdig enhances H3K36me3  
and metastatic potential of the triple  
negative breast cancer cells**

**Chitra Thakur, Yiran Qiu, Qian Zhang, Nicholas J. Carruthers, Miaomiao Yu, Zhuoyue Bi, Yao Fu, Priya Wadgaonkar, Bandar Almutairy, Akimasa Seno, Paul M. Stemmer, and Fei Chen**

Figure S1. Evaluation of tumors and metastasis in the NSG mice tissues. Related to Figure 3.

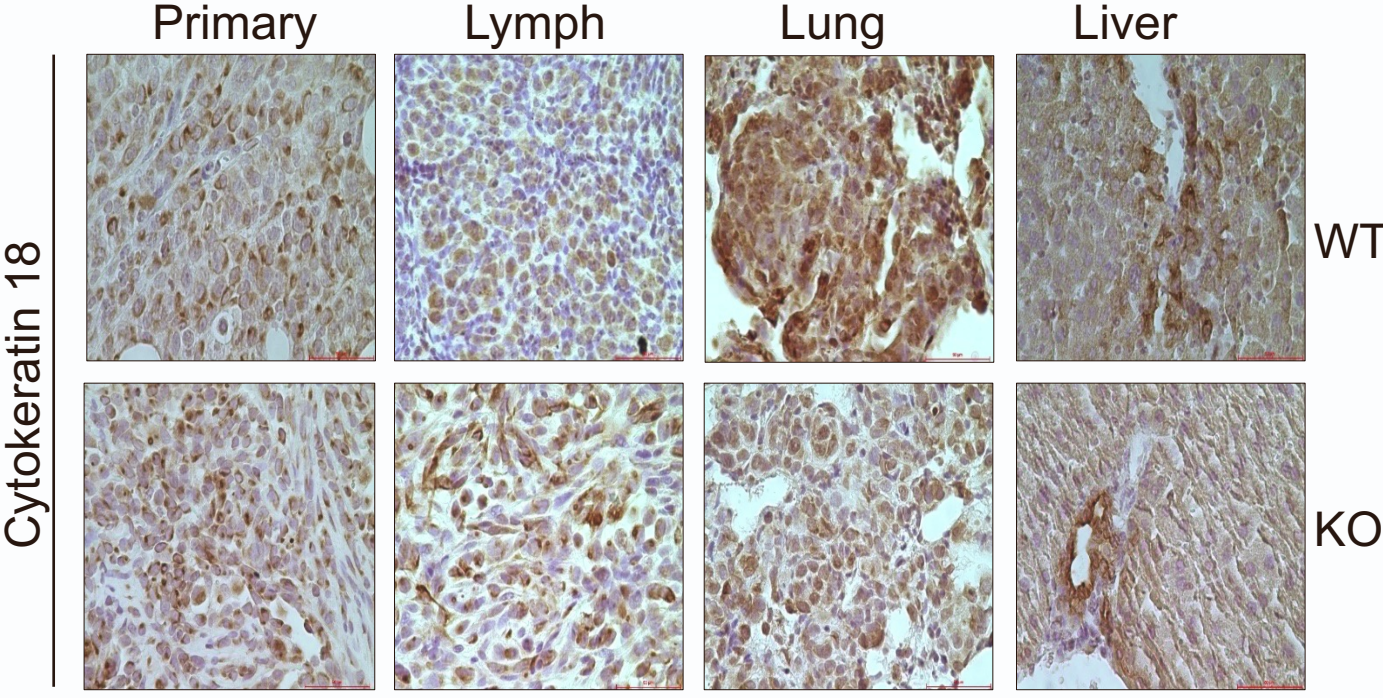
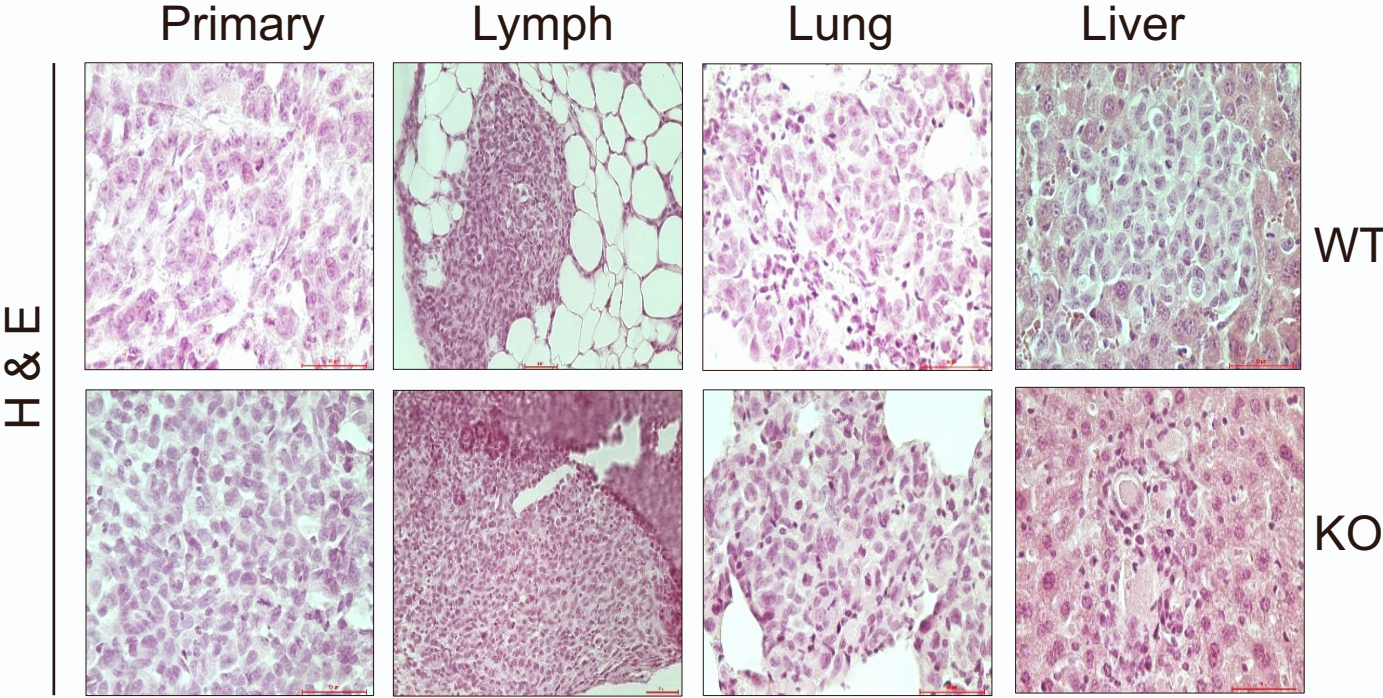


Figure S2. Stathmin1 (STMN1) is oncogenic but not responsible for the enhanced invasive migration of the KO cells. Related to STAR\*METHODS of stathmin immunofluorescence.

