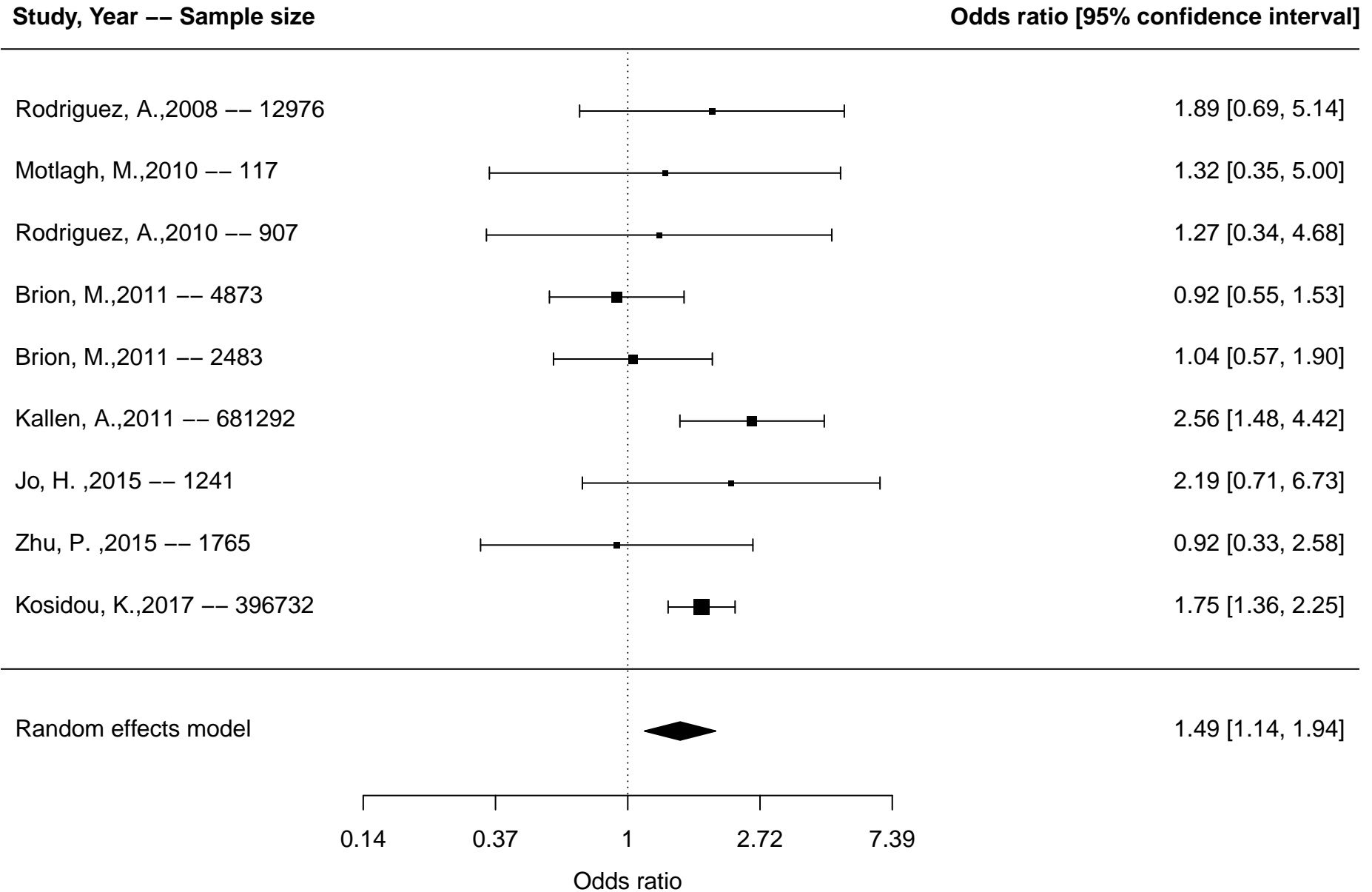


Table of Contents: Supplemental Forest plots of meta-analyses on the associations between prenatal, birth, and postnatal factors and ADHD

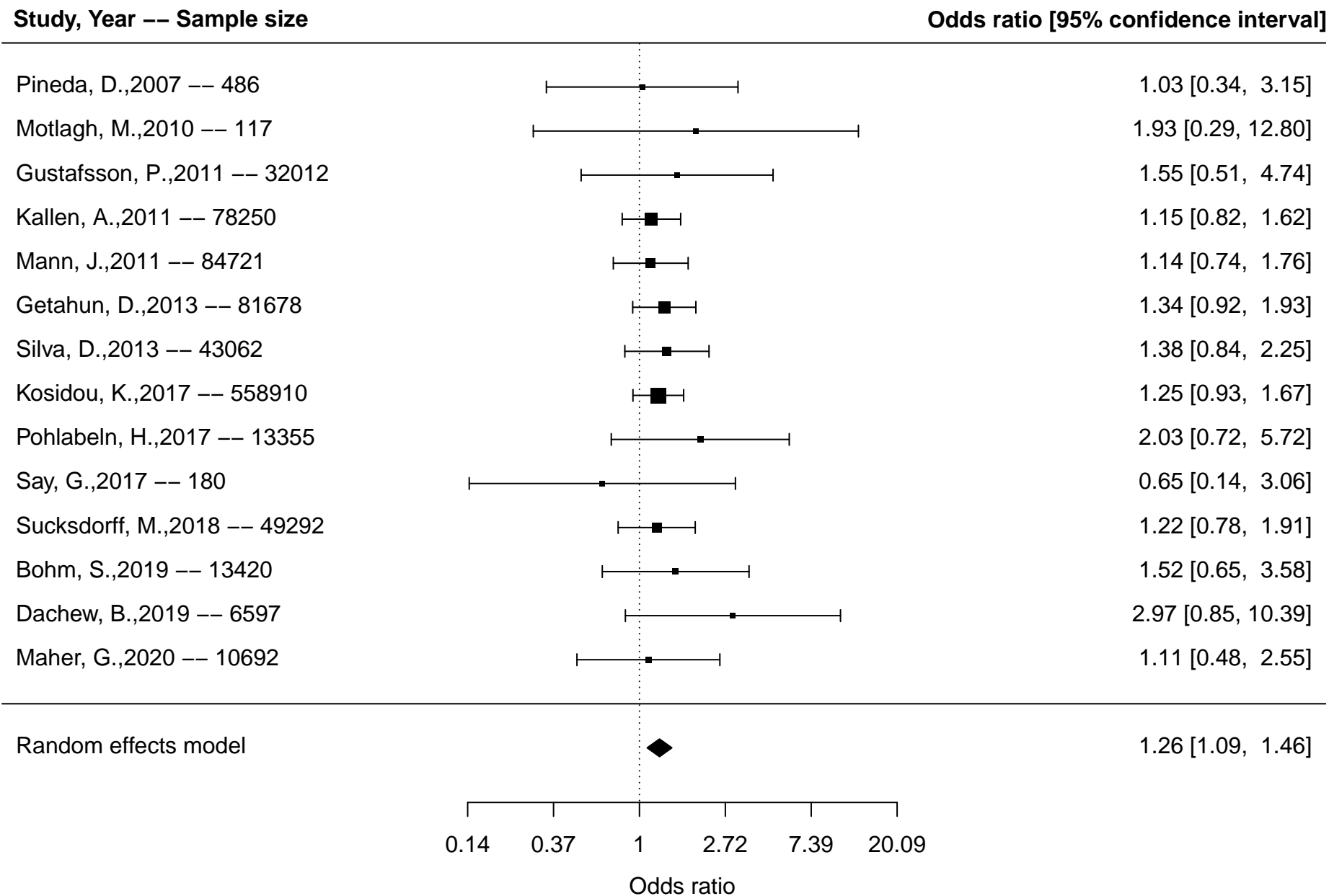
Figure S1. Pre-pregnancy weight and ADHD overall, dichotomous outcomes	2
Figure S2. Preeclampsia and ADHD overall, dichotomous outcomes	3
Figure S3. Preeclampsia and ADHD diagnosis, dichotomous outcomes	4
Figure S4. Pregnancy complications and ADHD overall, dichotomous outcomes	5
Figure S5. Pregnancy complications and ADHD diagnosis, dichotomous outcomes	6
Figure S6. Prenatal testosterone and ADHD overall, continuous outcomes	7
Figure S7. Prenatal testosterone and ADHD diagnosis, continuous outcomes	8
Figure S8. Prenatal testosterone and inattention, continuous outcomes	9
Figure S9. Prenatal testosterone and hyperactivity/impulsivity, continuous outcomes	10
Figure S10. Perinatal asphyxia and ADHD overall, dichotomous outcomes	11
Figure S11. Perinatal asphyxia and ADHD diagnosis, dichotomous outcomes	12
Figure S12. Labor complications and ADHD overall, dichotomous outcomes	13
Figure S13. Labor complications and ADHD overall, continuous outcomes	14
Figure S14. Mode of delivery and ADHD overall, dichotomous outcomes	15
Figure S15. Mode of delivery and ADHD diagnosis, dichotomous outcomes	16
Figure S16. Breech delivery and ADHD overall, dichotomous outcomes	17
Figure S17. Breech delivery and ADHD diagnosis, dichotomous outcomes	18
Figure S18. Cesarean delivery and ADHD overall, dichotomous outcomes	19
Figure S19. Vacuum delivery and ADHD overall, dichotomous outcomes	20
Figure S20. Apgar score and ADHD overall, dichotomous outcomes	21
Figure S21. Apgar score and ADHD diagnosis, dichotomous outcomes	22
Figure S22. Neonatal illness and ADHD overall, dichotomous outcomes	23
Figure S23. Neonatal illness and ADHD diagnosis, dichotomous outcomes	24
Figure S24. Neonatal illness and ADHD overall, continuous outcomes	25
Figure S25. No breastfeeding and ADHD overall, dichotomous outcomes	26

Figure S1. Forest plot of meta-analysis of pre-pregnancy weight and attention-deficit/hyperactivity disorder (ADHD) overall* based on studies reporting dichotomous outcomes



*Overall includes studies reporting on any included ADHD outcomes (diagnosis, ADHD symptoms, inattention, hyperactivity/impulsivity)

Figure S2. Forest plot of meta-analysis of preeclampsia and attention-deficit/hyperactivity disorder (ADHD) overall* based on studies reporting dichotomous outcomes



*Overall includes studies reporting on any included ADHD outcomes (diagnosis, ADHD symptoms, inattention, hyperactivity/impulsivity); the same studies were included (identical results) for ADHD diagnosis

Figure S3. Forest plot of meta-analysis of preeclampsia and attention-deficit/hyperactivity disorder (ADHD) diagnosis based on studies reporting dichotomous outcomes

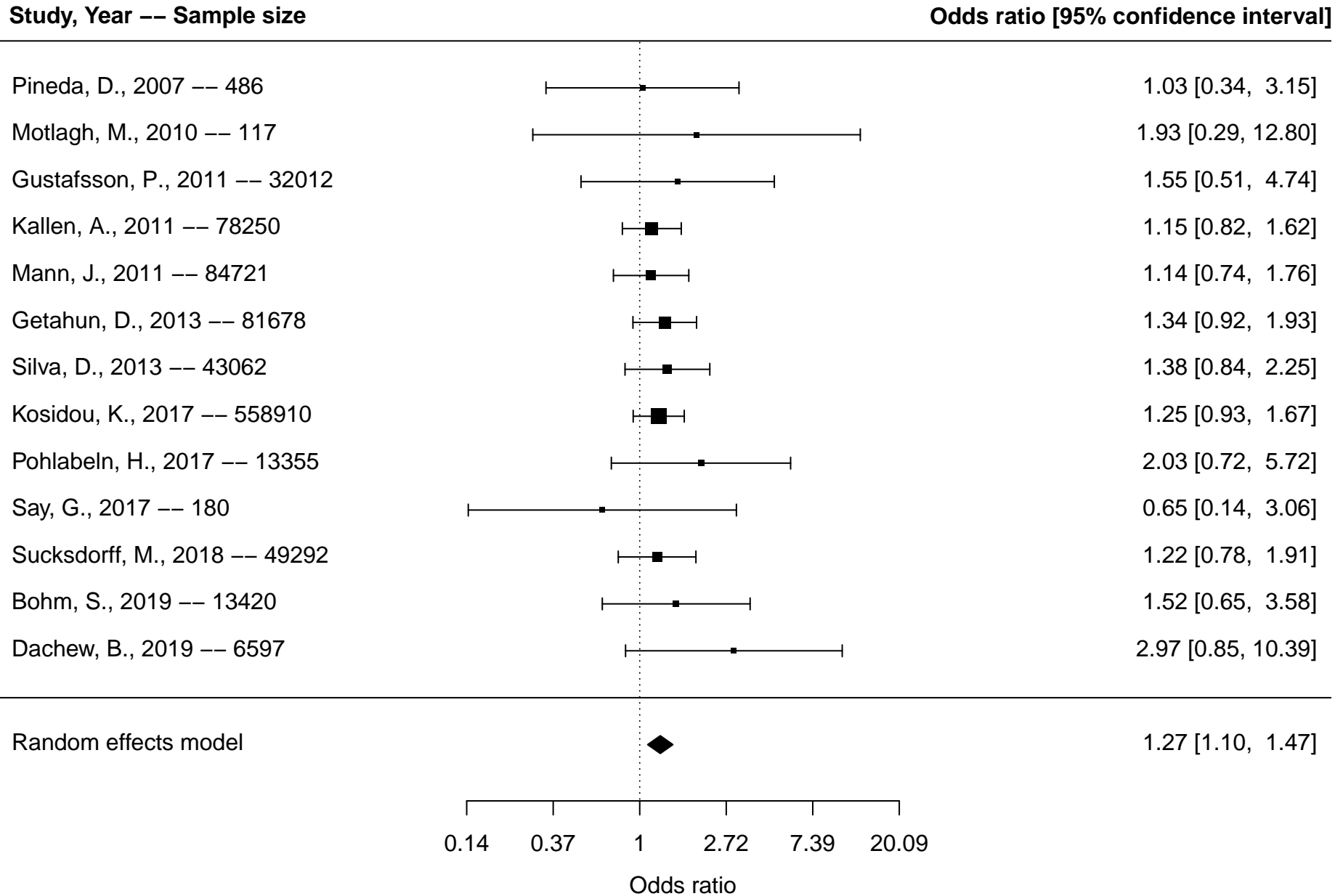
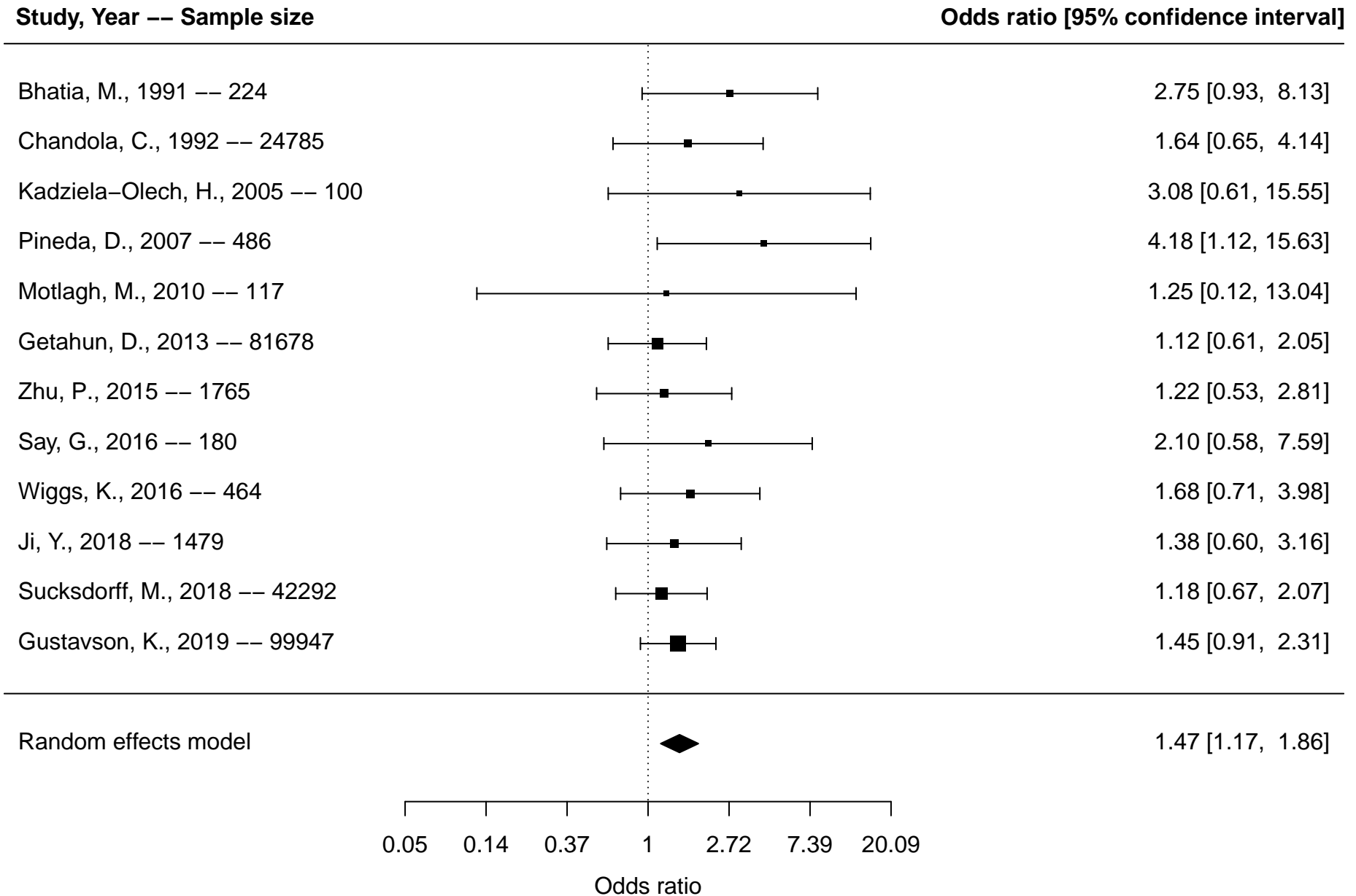


Figure S4. Forest plot of meta-analysis of pregnancy complications and attention-deficit/hyperactivity disorder (ADHD) overall* based on studies reporting dichotomous outcomes



*Overall includes studies reporting on any included ADHD outcomes (diagnosis, ADHD symptoms, inattention, hyperactivity/impulsivity)

Figure S5. Forest plot of meta-analysis of pregnancy complications and attention-deficit/hyperactivity disorder (ADHD) diagnosis based on studies reporting dichotomous outcomes

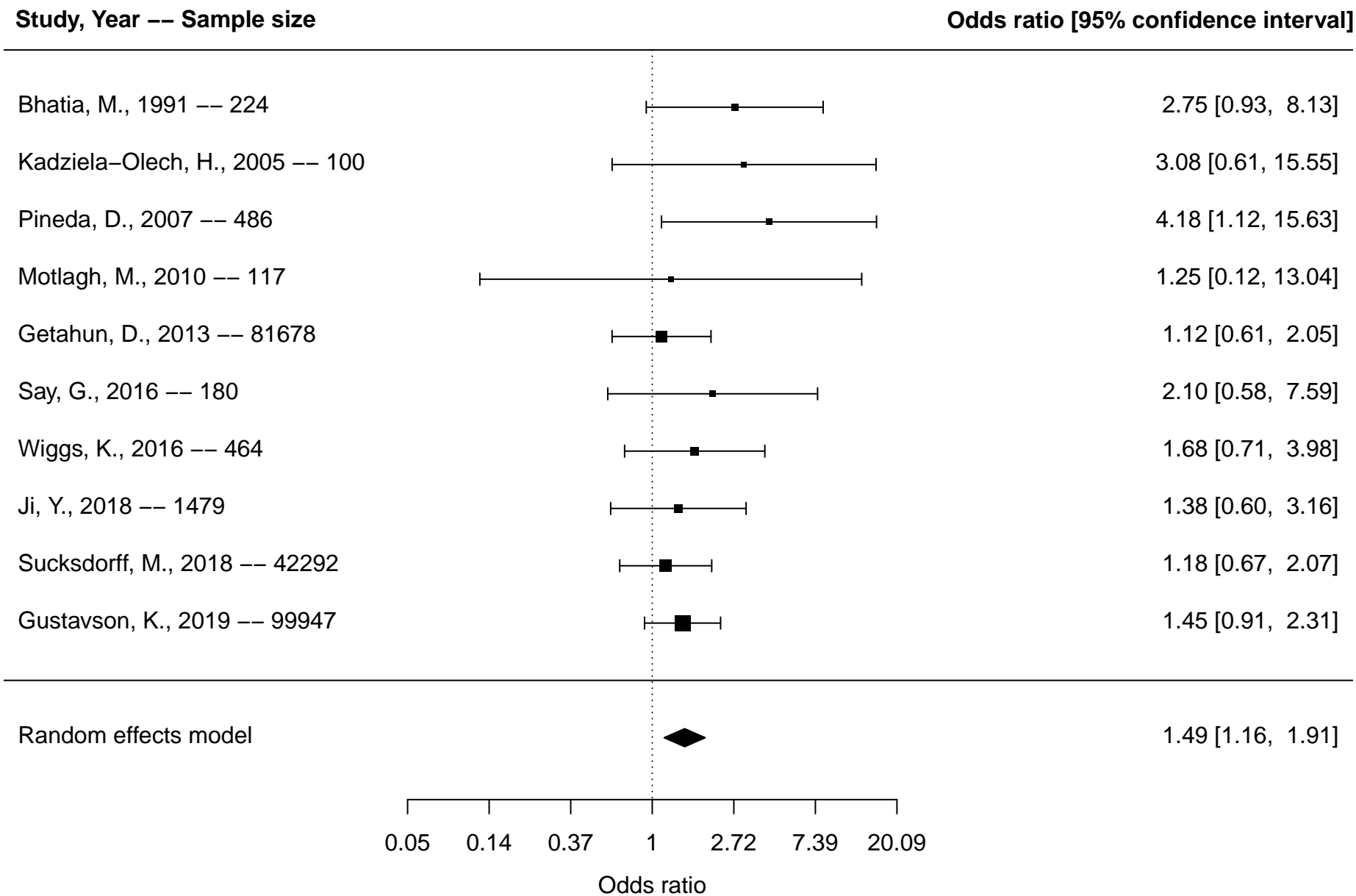
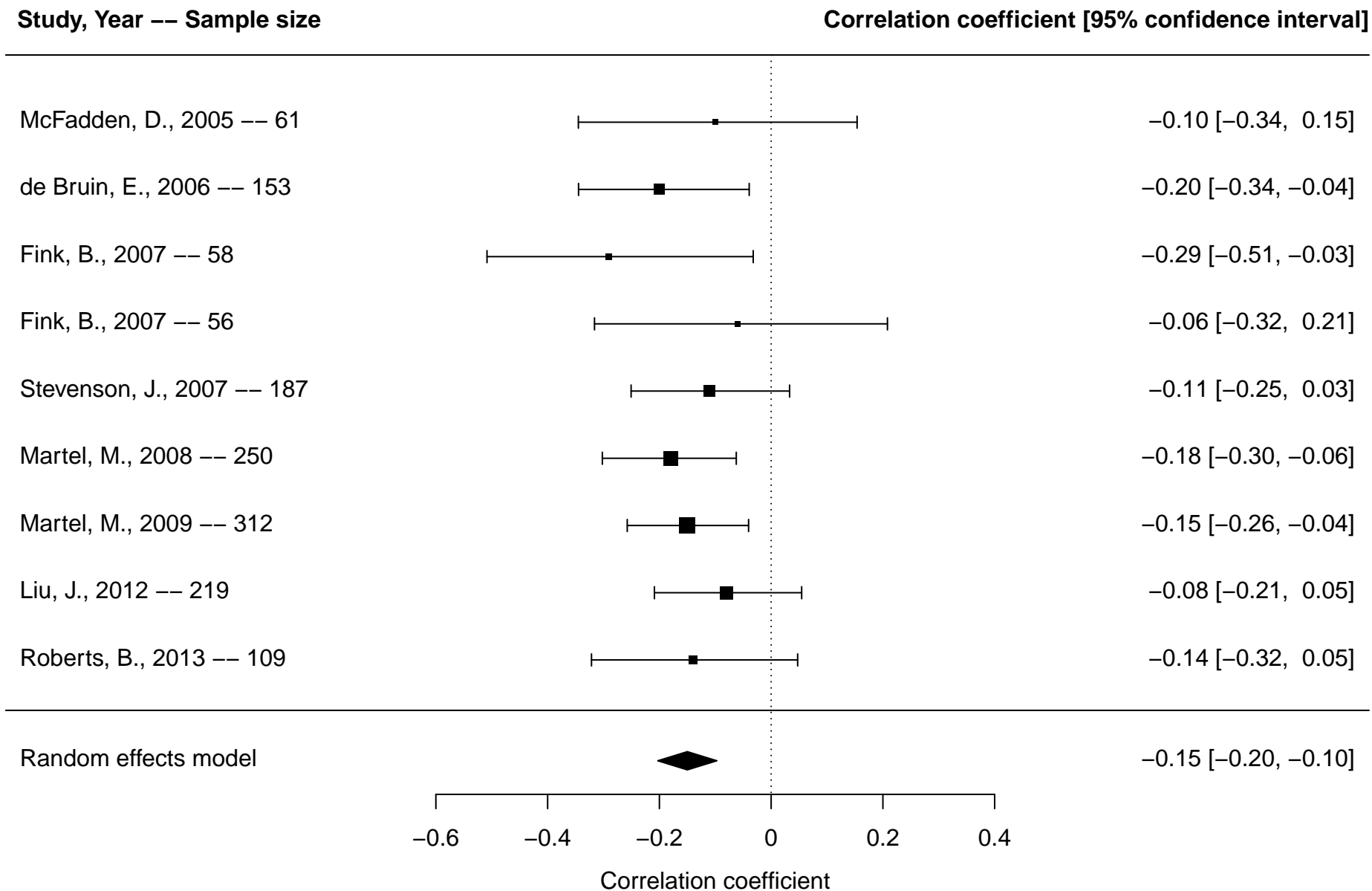


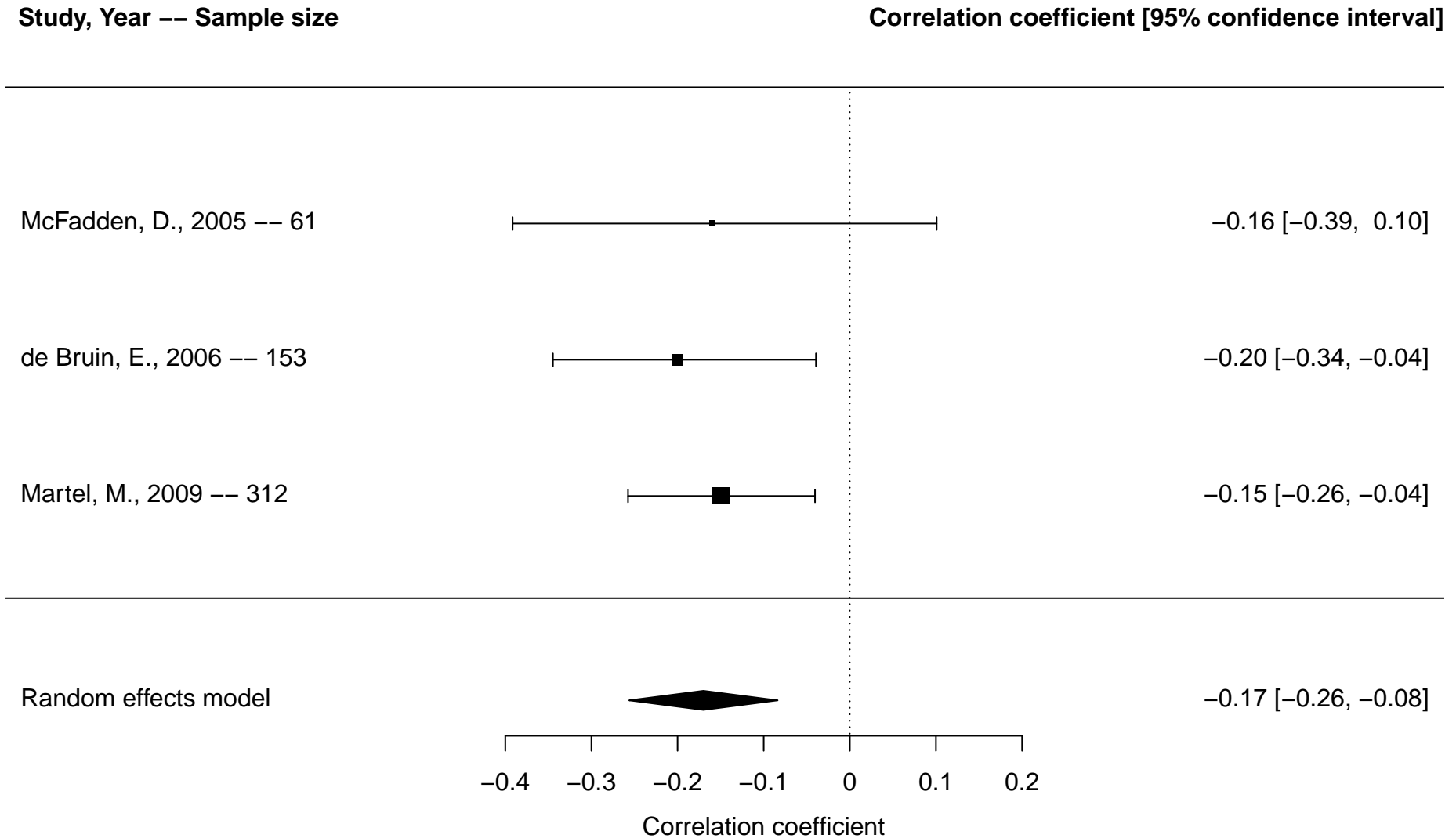
Figure S6. Forest plot of meta-analysis of prenatal testosterone* and attention-deficit/hyperactivity disorder (ADHD) overall** based on studies reporting continuous outcomes



*Prenatal testosterone was measured using finger length ratio (2nd digit (2D):4D ratio). A lower ratio represents greater testosterone exposure

**Overall includes studies reporting on any included ADHD outcomes (diagnosis, ADHD symptoms, inattention, hyperactivity/impulsivity)

Figure S7. Forest plot of meta-analysis of prenatal testosterone* and attention-deficit/hyperactivity disorder (ADHD) diagnosis based on studies reporting continuous outcomes

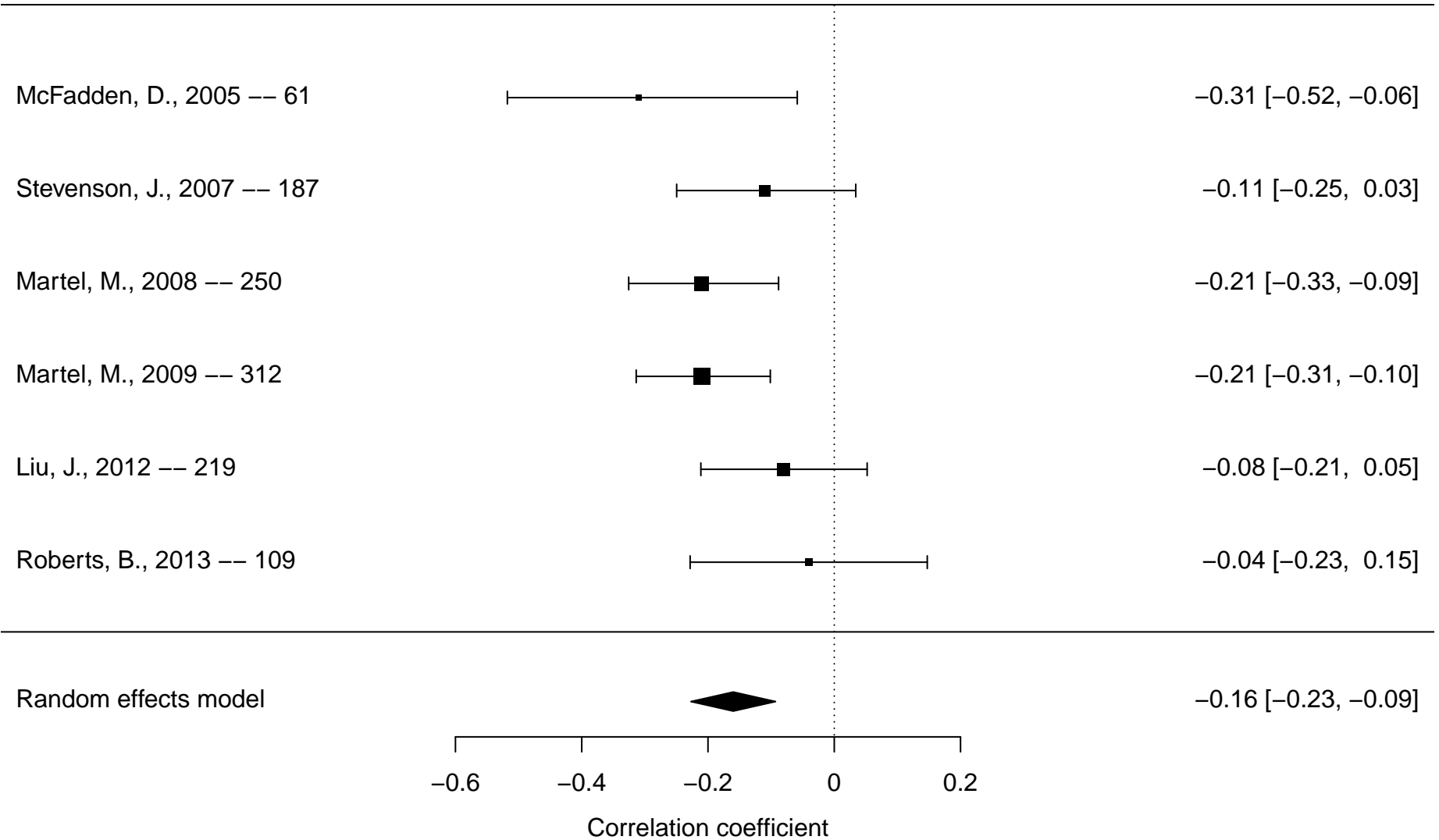


*Prenatal testosterone was measured using finger length ratio (2nd digit (2D):4D ratio). A lower ratio represents greater testosterone exposure

Figure S8. Forest plot of meta-analysis of prenatal testosterone* and inattention based on studies reporting continuous outcomes

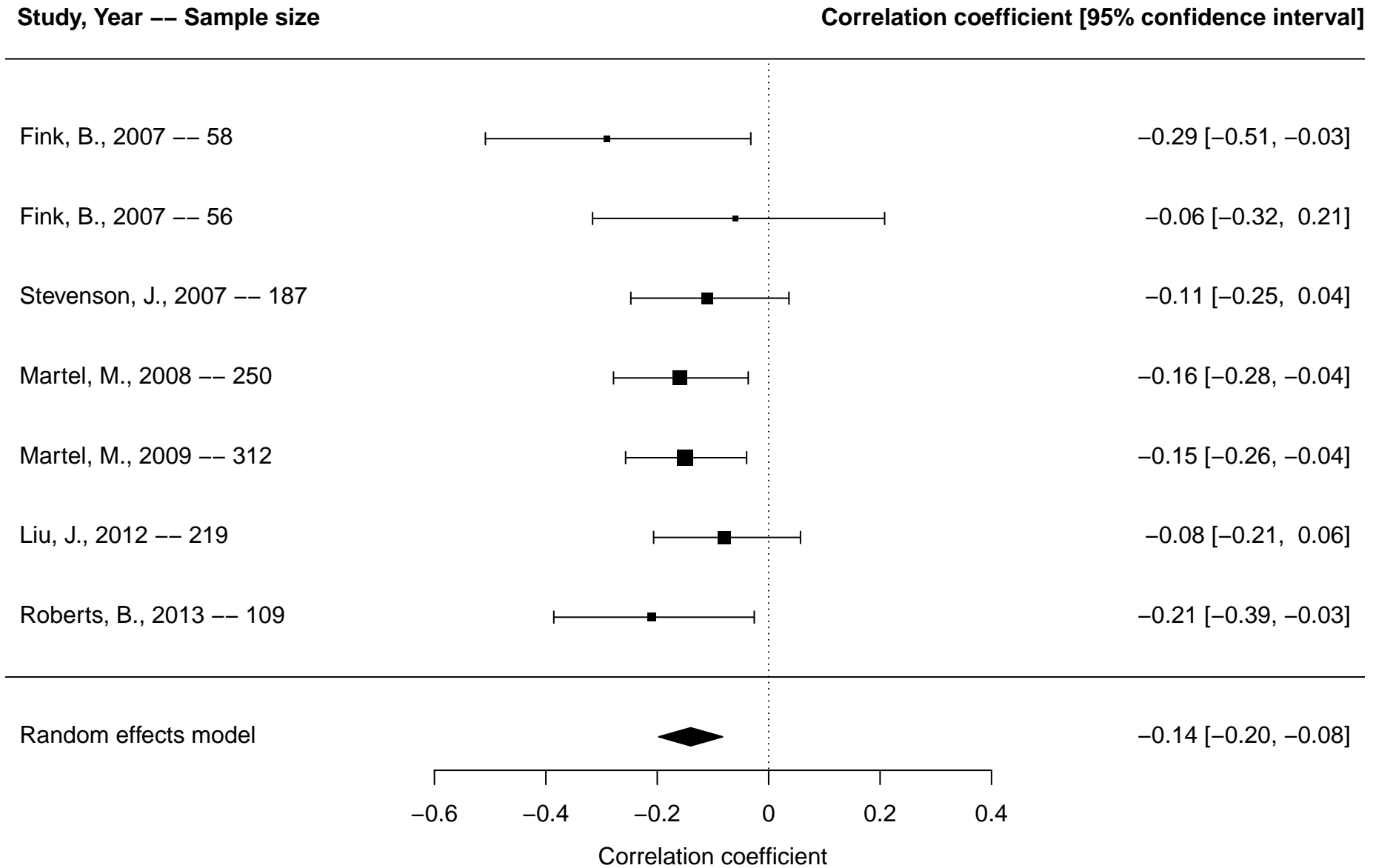
Study, Year -- Sample size

Correlation coefficient [95% confidence interval]



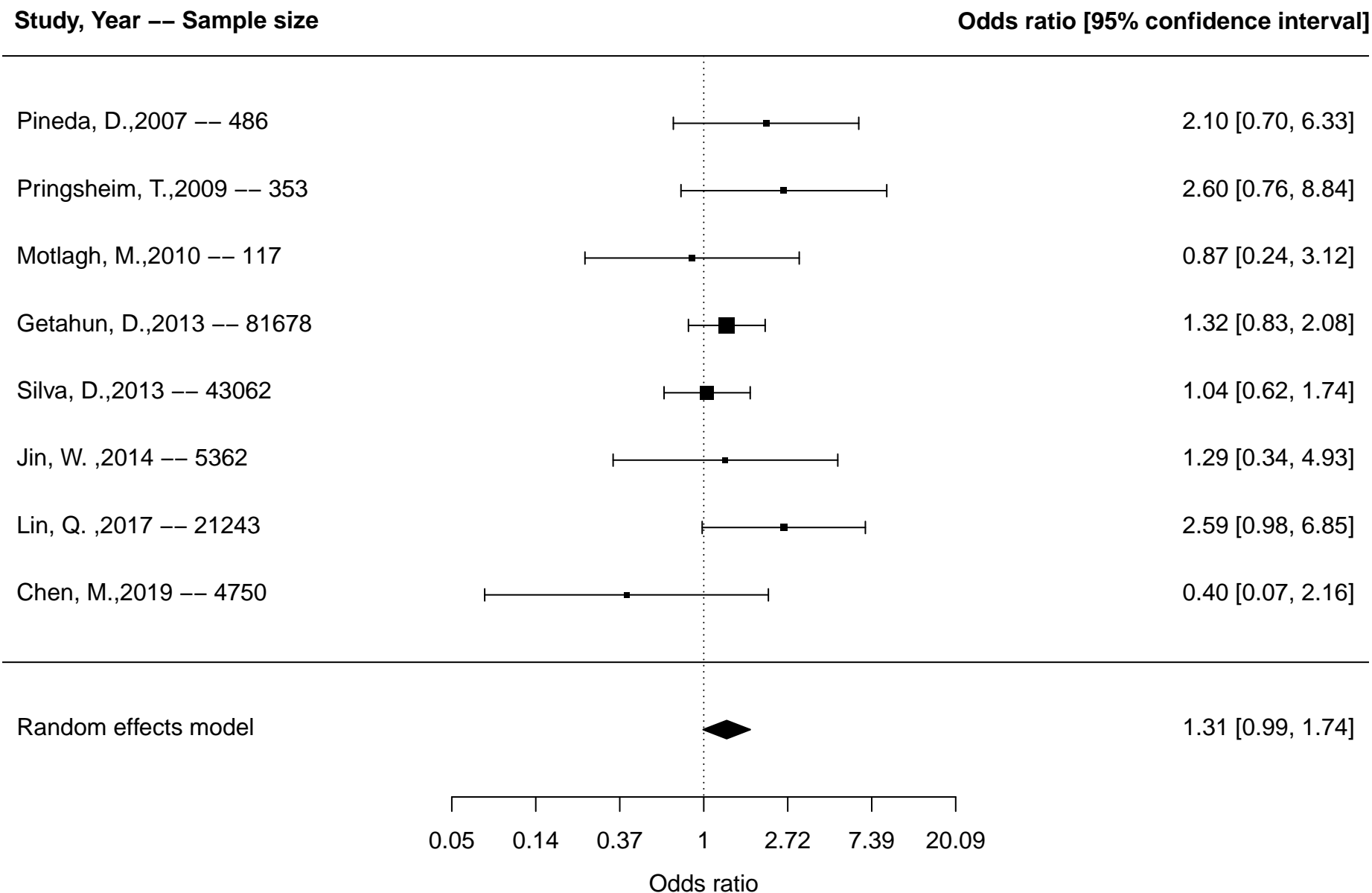
*Prenatal testosterone was measured using finger length ratio (2nd digit (2D):4D ratio). A lower ratio represents greater testosterone exposure

Figure S9. Forest plot of meta-analysis of prenatal testosterone* and hyperactivity/impulsivity based on studies reporting continuous outcomes



*Prenatal testosterone was measured using finger length ratio (2nd digit (2D):4D ratio). A lower ratio represents greater testosterone exposure

Figure S10. Forest plot of meta-analysis of perinatal asphyxia and attention-deficit/hyperactivity disorder (ADHD) overall* based on studies reporting dichotomous outcomes



*Overall includes studies reporting on any included ADHD outcomes (diagnosis, ADHD symptoms, inattention, hyperactivity/impulsivity)

Figure S11. Forest plot of meta-analysis of perinatal asphyxia and attention-deficit/hyperactivity disorder (ADHD) diagnosis based on studies reporting dichotomous outcomes

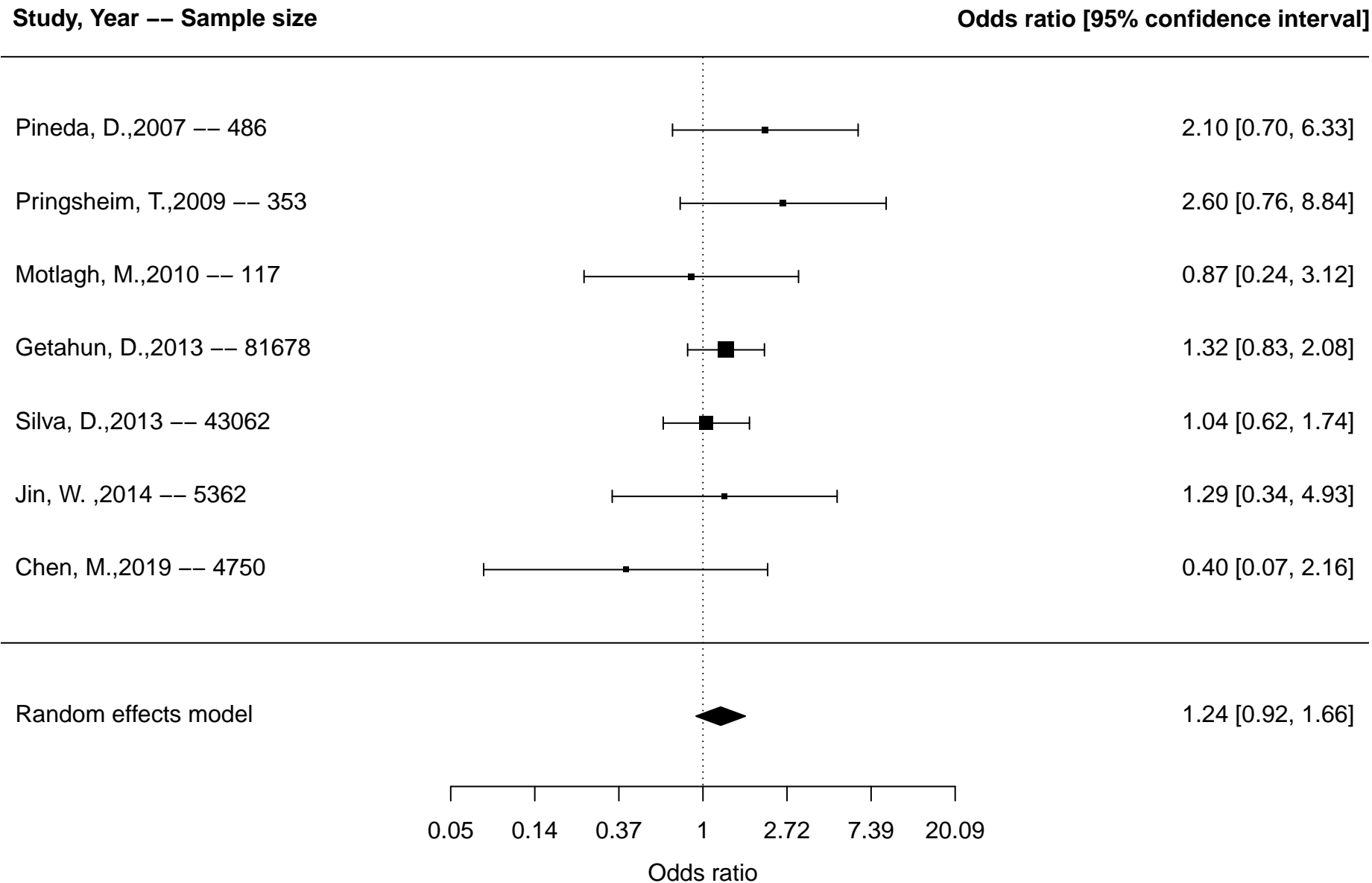
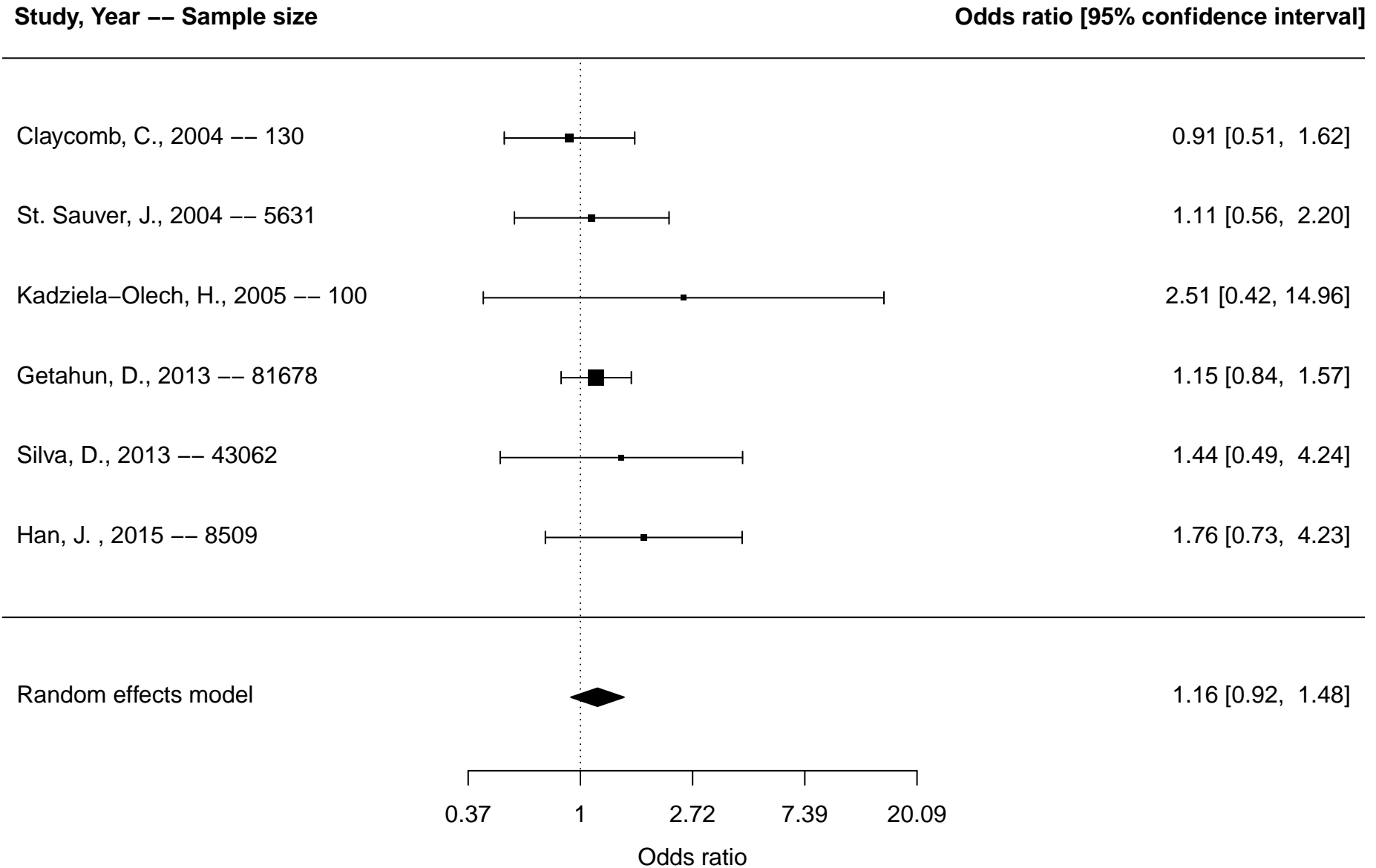
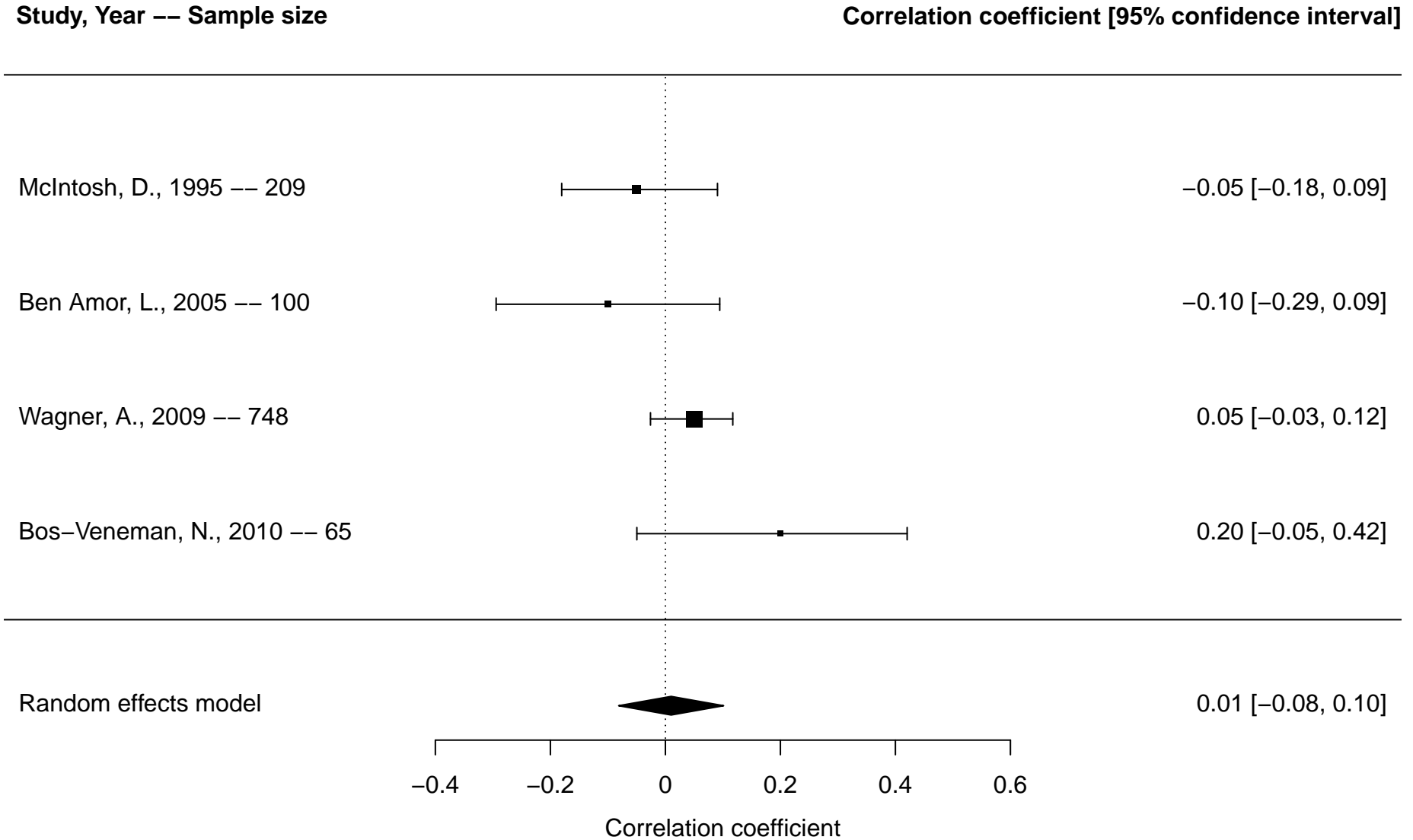


Figure S12. Forest plot of meta-analysis of labor complications and attention-deficit/hyperactivity disorder (ADHD) overall* based on studies reporting dichotomous outcomes



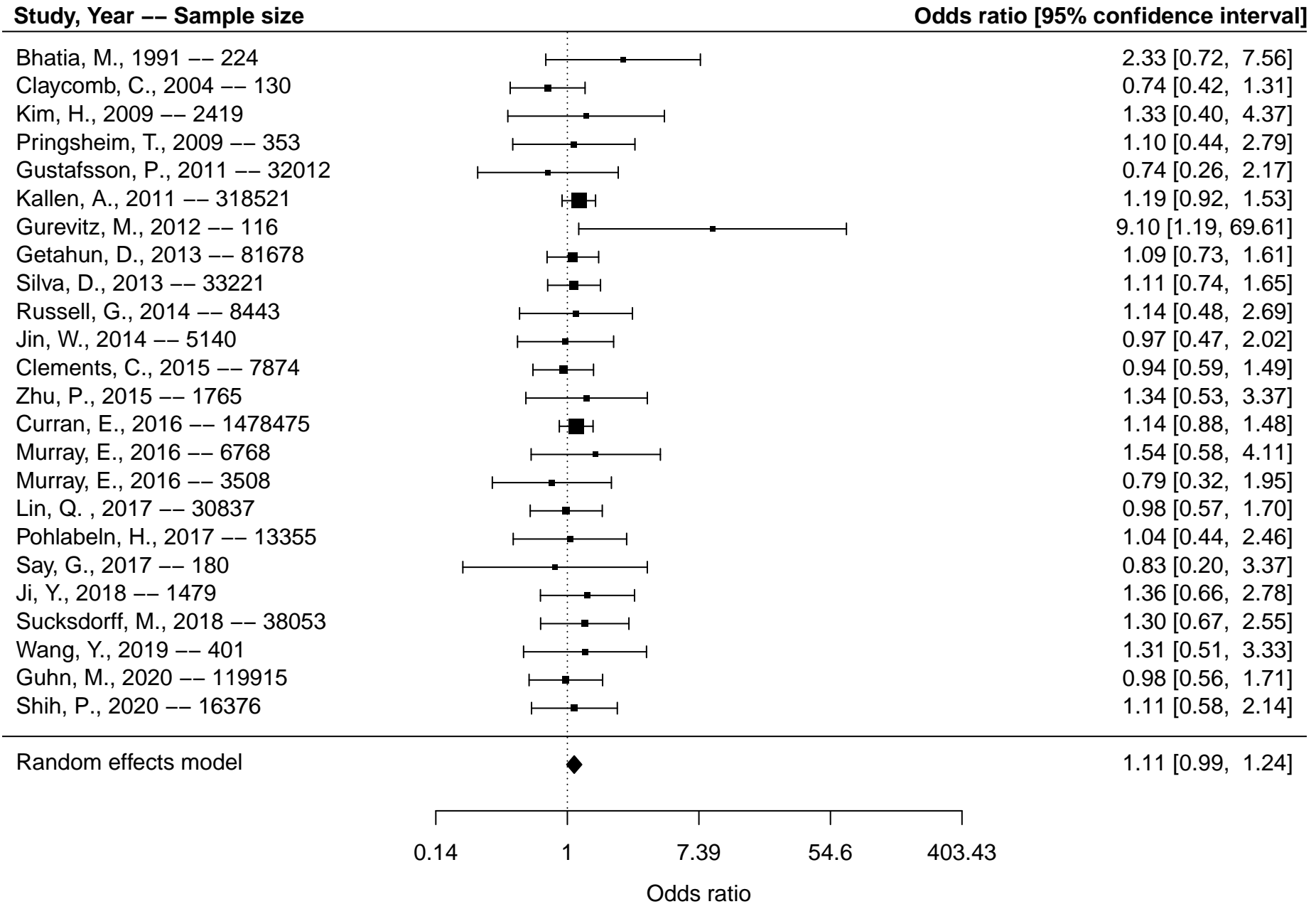
*Overall includes studies reporting on any included ADHD outcomes (diagnosis, ADHD symptoms, inattention, hyperactivity/impulsivity); the same studies were included (identical results) for ADHD diagnosis

Figure S13. Forest plot of meta-analysis of labor complications and attention-deficit/hyperactivity disorder (ADHD) overall* based on studies reporting continuous outcomes



*Overall includes studies reporting on any included ADHD outcomes (diagnosis, ADHD symptoms, inattention, hyperactivity/impulsivity)

Figure S14. Forest plot of meta-analysis of mode of delivery and attention-deficit/hyperactivity disorder (ADHD) overall* based on studies reporting dichotomous outcomes



*Overall includes studies reporting on any included ADHD outcomes (diagnosis, ADHD symptoms, inattention, hyperactivity/impulsivity)

Figure S15. Forest plot of meta-analysis of mode of delivery and attention-deficit/hyperactivity disorder (ADHD) diagnosis based on studies reporting dichotomous outcomes

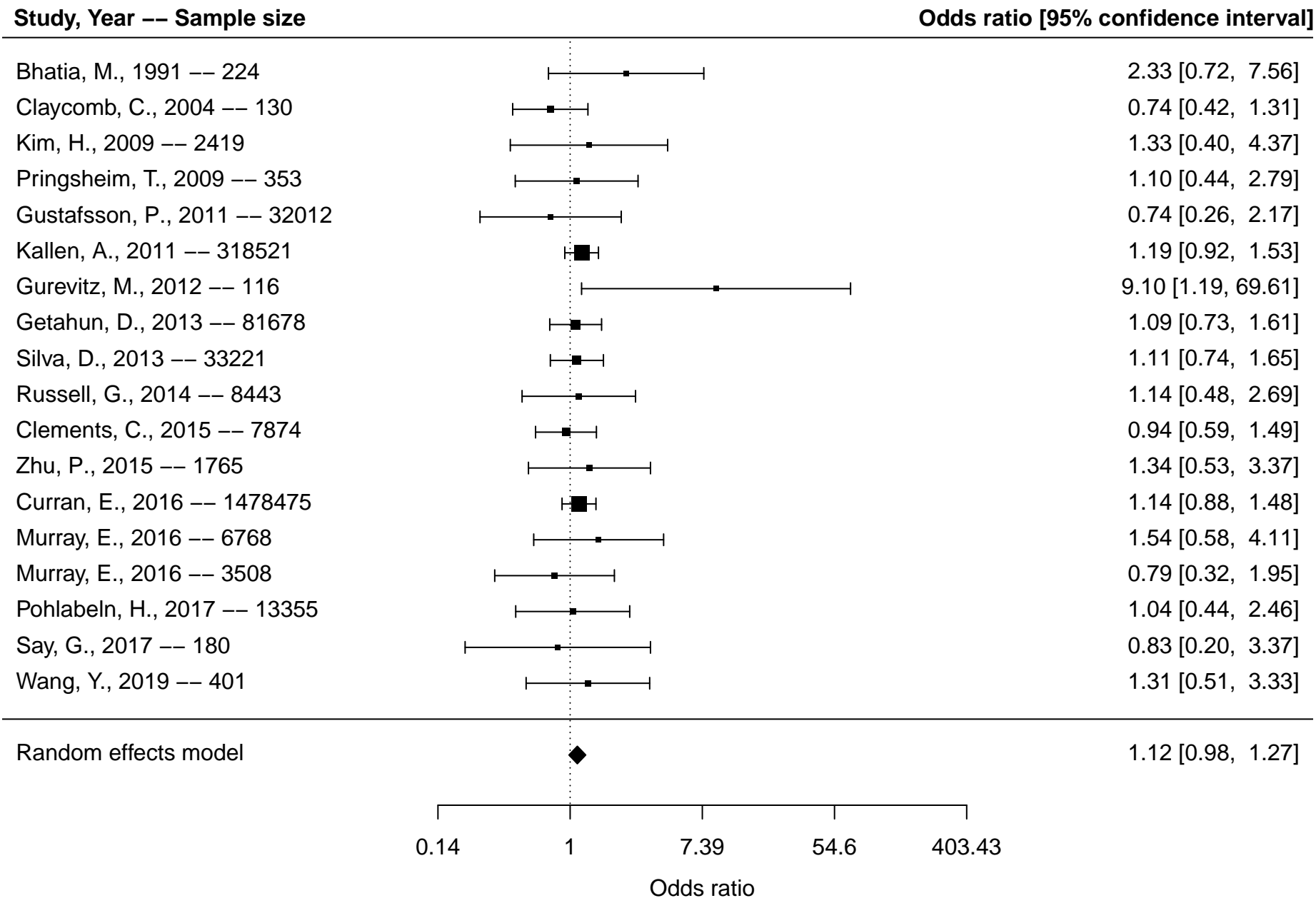
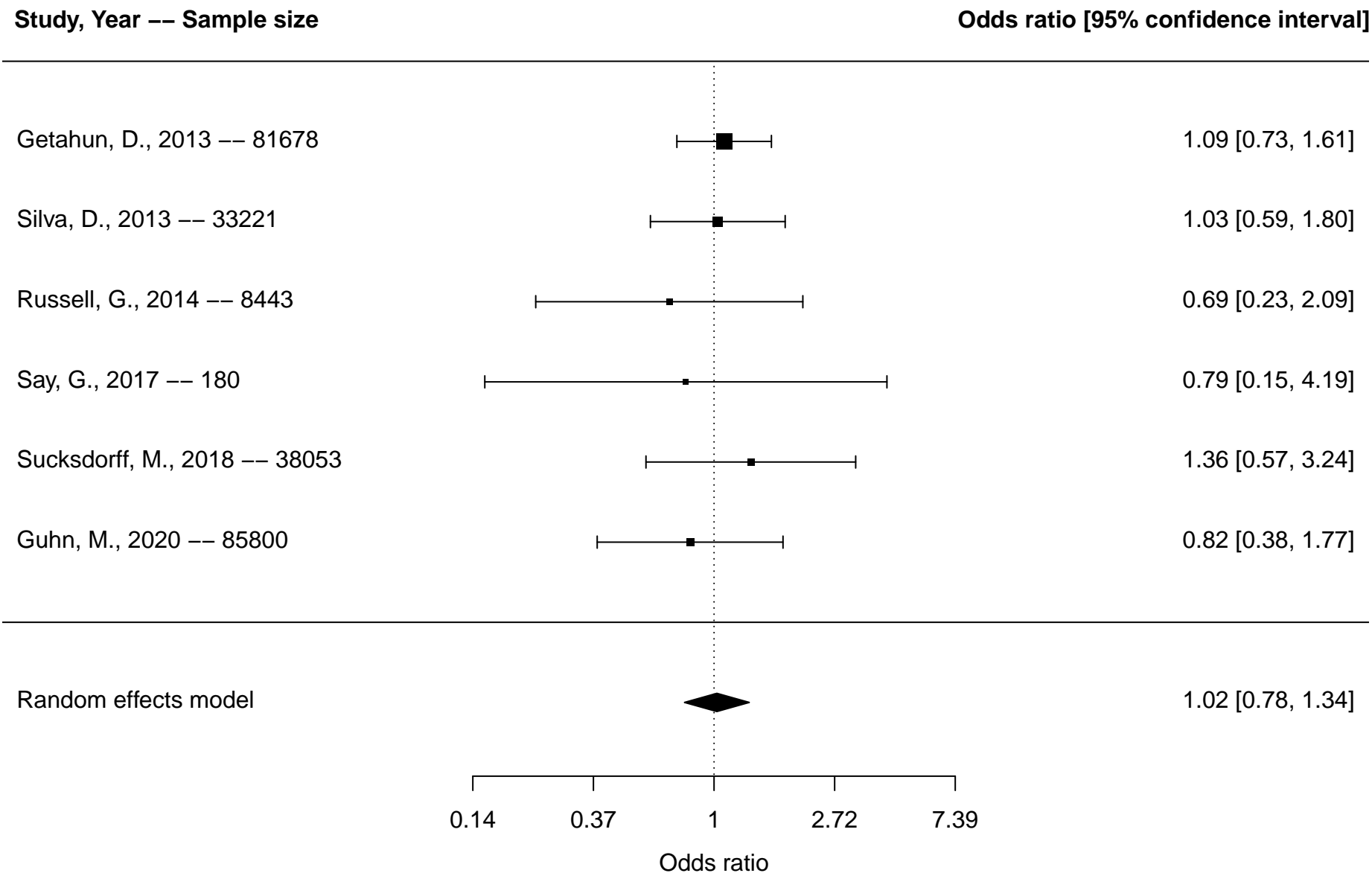


Figure S16. Forest plot of meta-analysis of breech delivery and attention-deficit/hyperactivity disorder (ADHD) overall* based on studies reporting dichotomous outcomes



*Overall includes studies reporting on any included ADHD outcomes (diagnosis, ADHD symptoms, inattention, hyperactivity/impulsivity)

Figure S17. Forest plot of meta-analysis of breech delivery and attention-deficit/hyperactivity disorder (ADHD) diagnosis based on studies reporting dichotomous outcomes

Study, Year -- Sample size

Odds ratio [95% confidence interval]

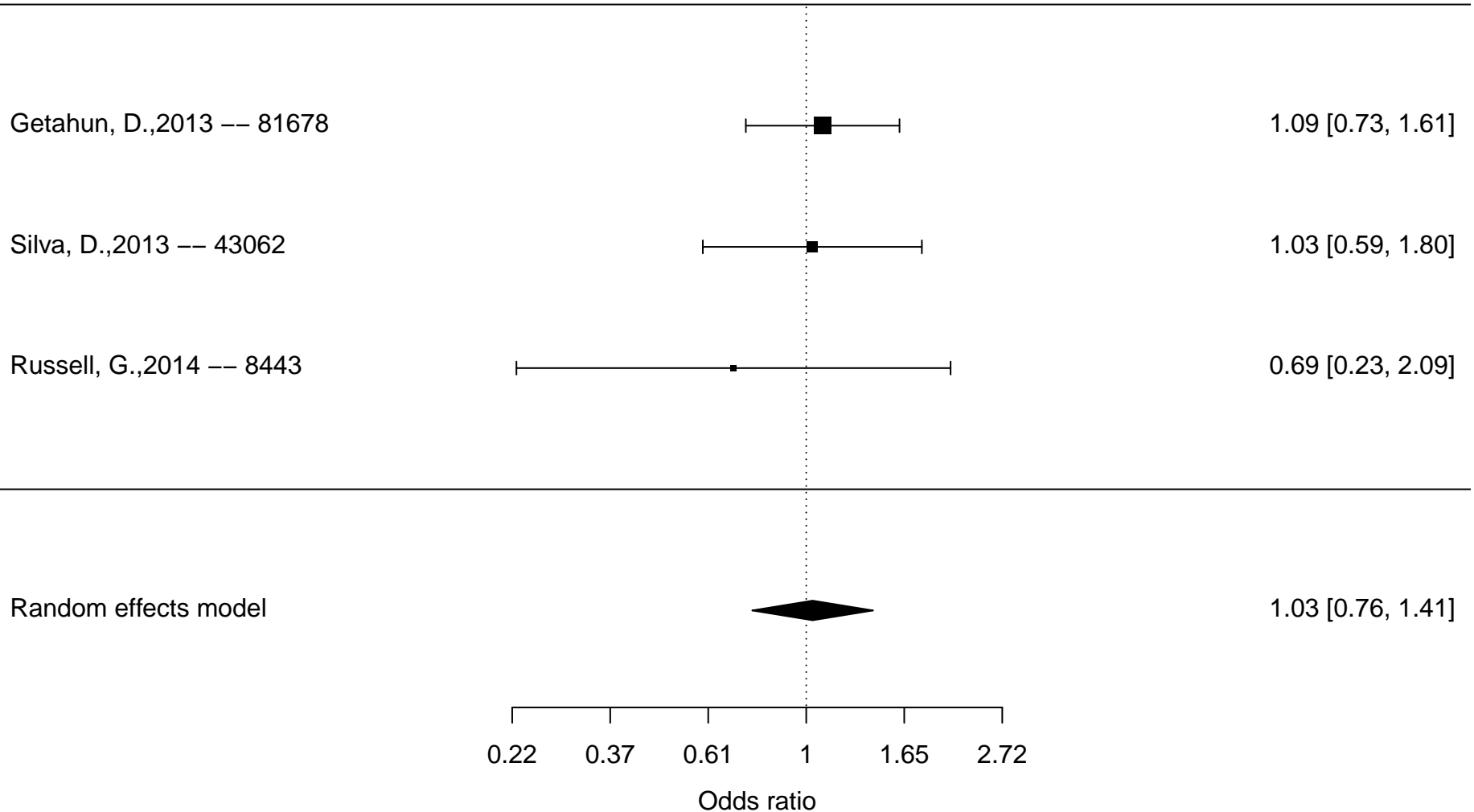
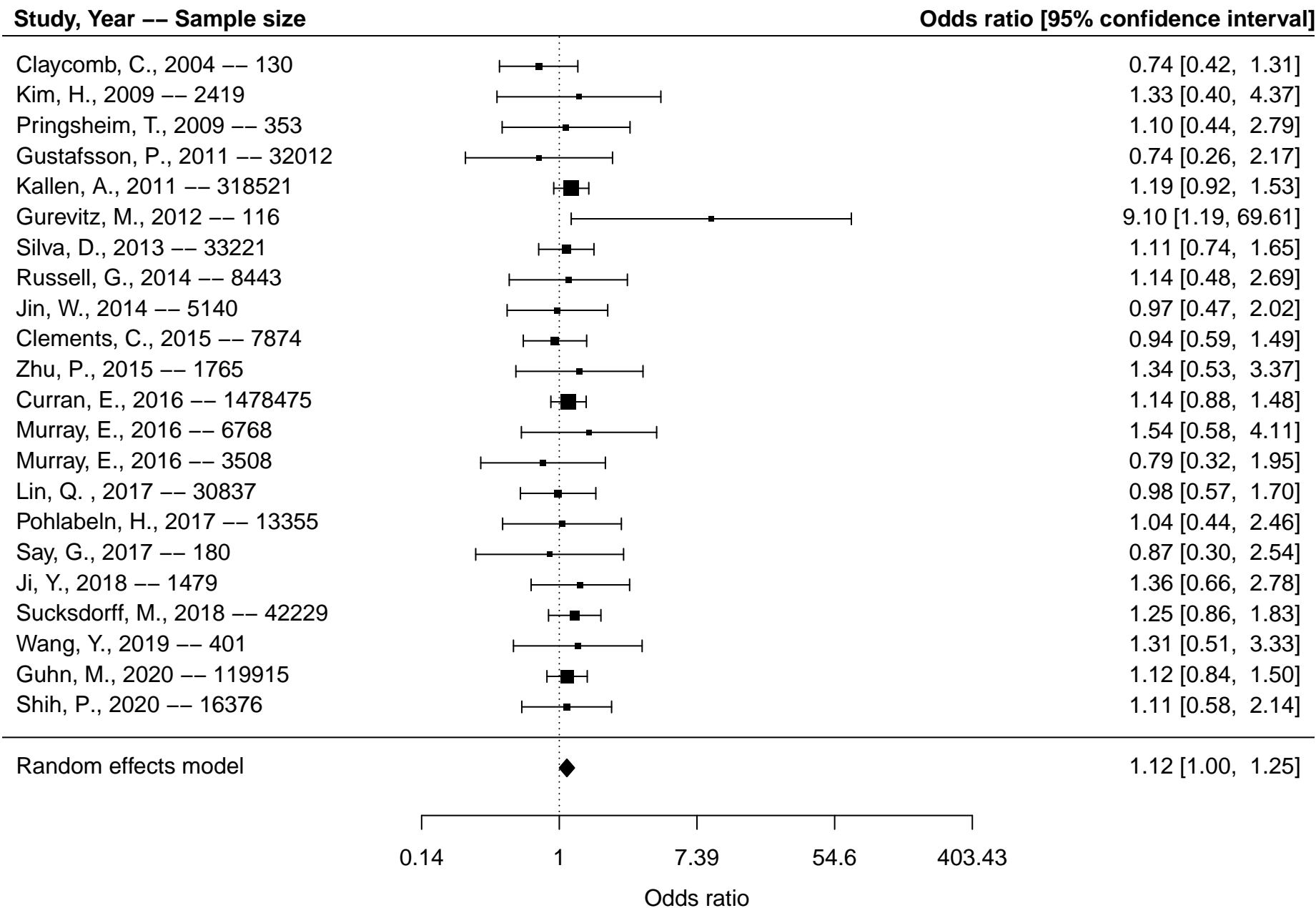
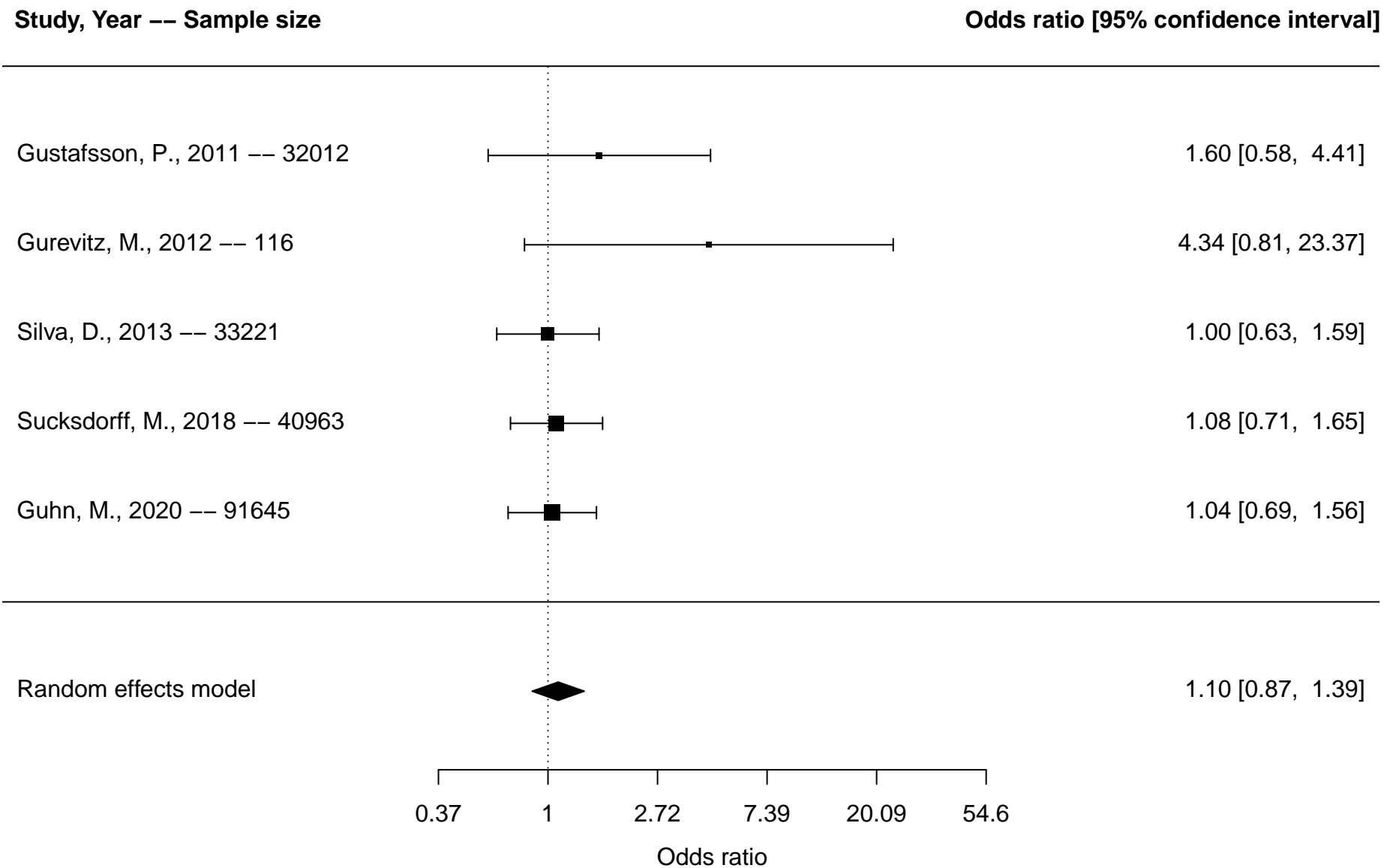


Figure S18. Forest plot of meta-analysis of cesarean delivery and attention-deficit/hyperactivity disorder (ADHD) overall* based on studies reporting dichotomous outcomes



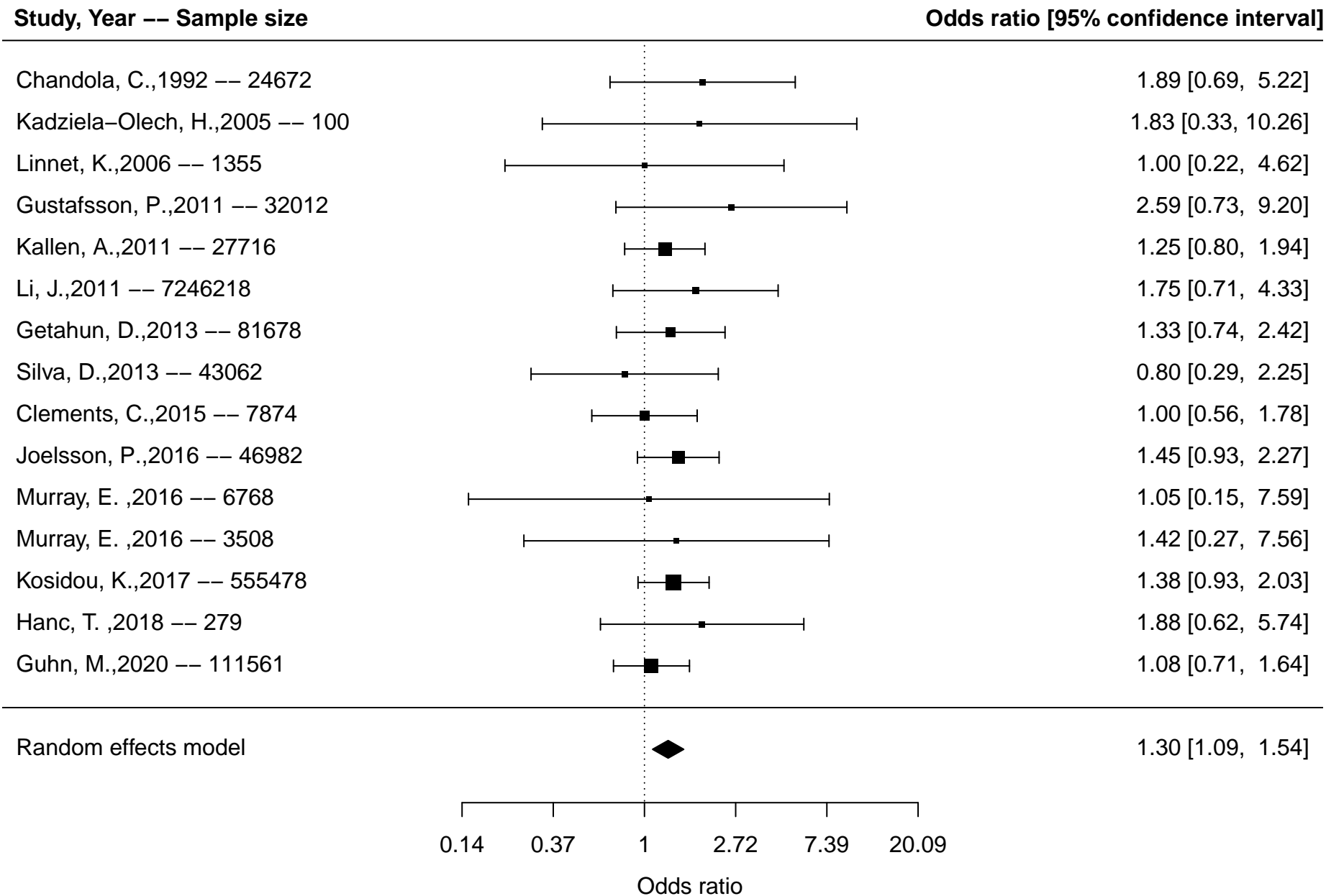
*Overall includes studies reporting on any included ADHD outcomes (diagnosis, ADHD symptoms, inattention, hyperactivity/impulsivity)

Figure S19. Forest plot of meta-analysis of vacuum delivery and attention-deficit/hyperactivity disorder (ADHD) overall* based on studies reporting dichotomous outcomes



*Overall includes studies reporting on any included ADHD outcomes (diagnosis, ADHD symptoms, inattention, hyperactivity/impulsivity)

Figure S20. Forest plot of meta-analysis of Apgar score and attention-deficit/hyperactivity disorder (ADHD) overall* based on studies reporting dichotomous outcomes



*Overall includes studies reporting on any included ADHD outcomes (diagnosis, ADHD symptoms, inattention, hyperactivity/impulsivity)

Figure S21. Forest plot of meta-analysis of Apgar score and attention-deficit/hyperactivity disorder (ADHD) diagnosis based on studies reporting dichotomous outcomes

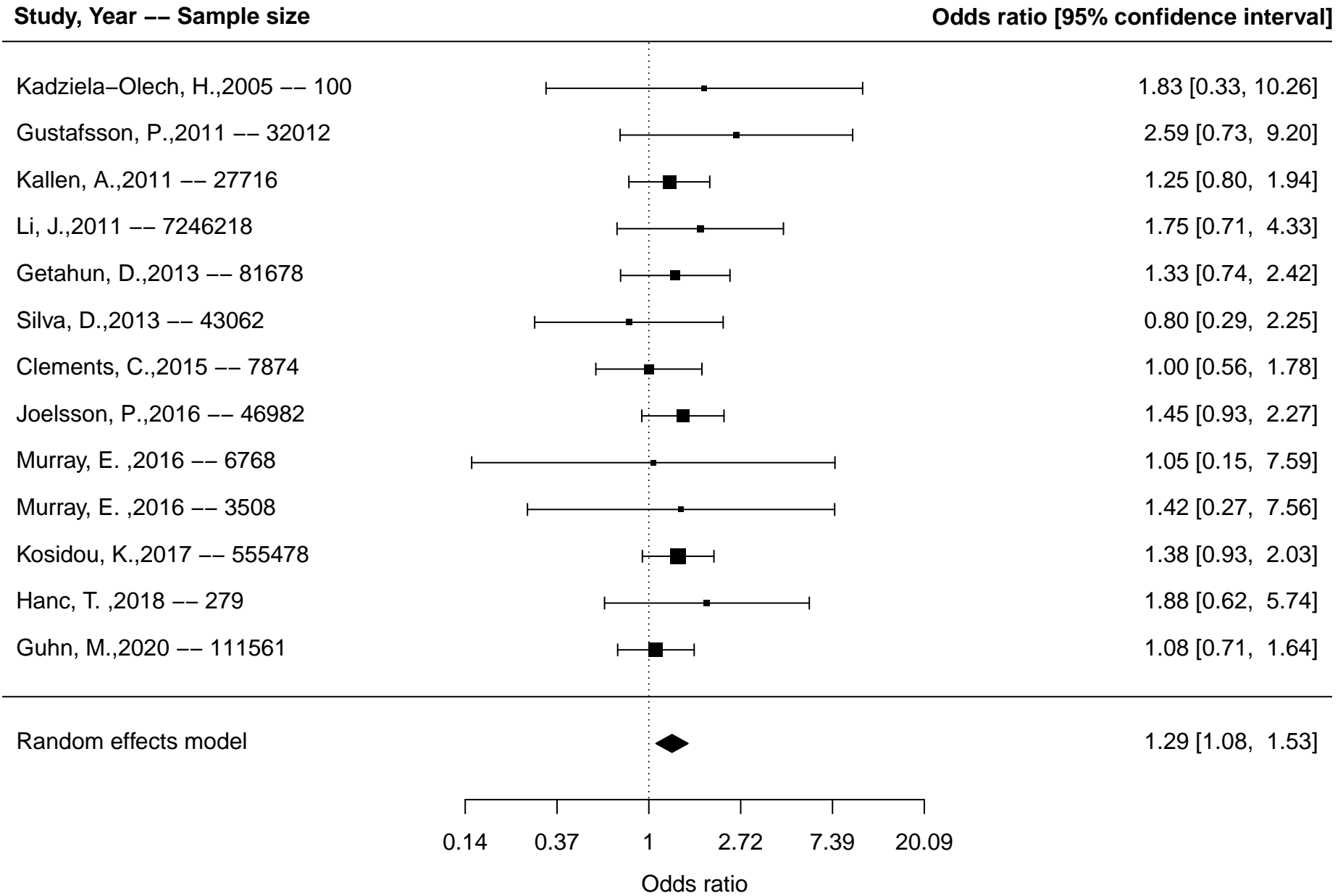
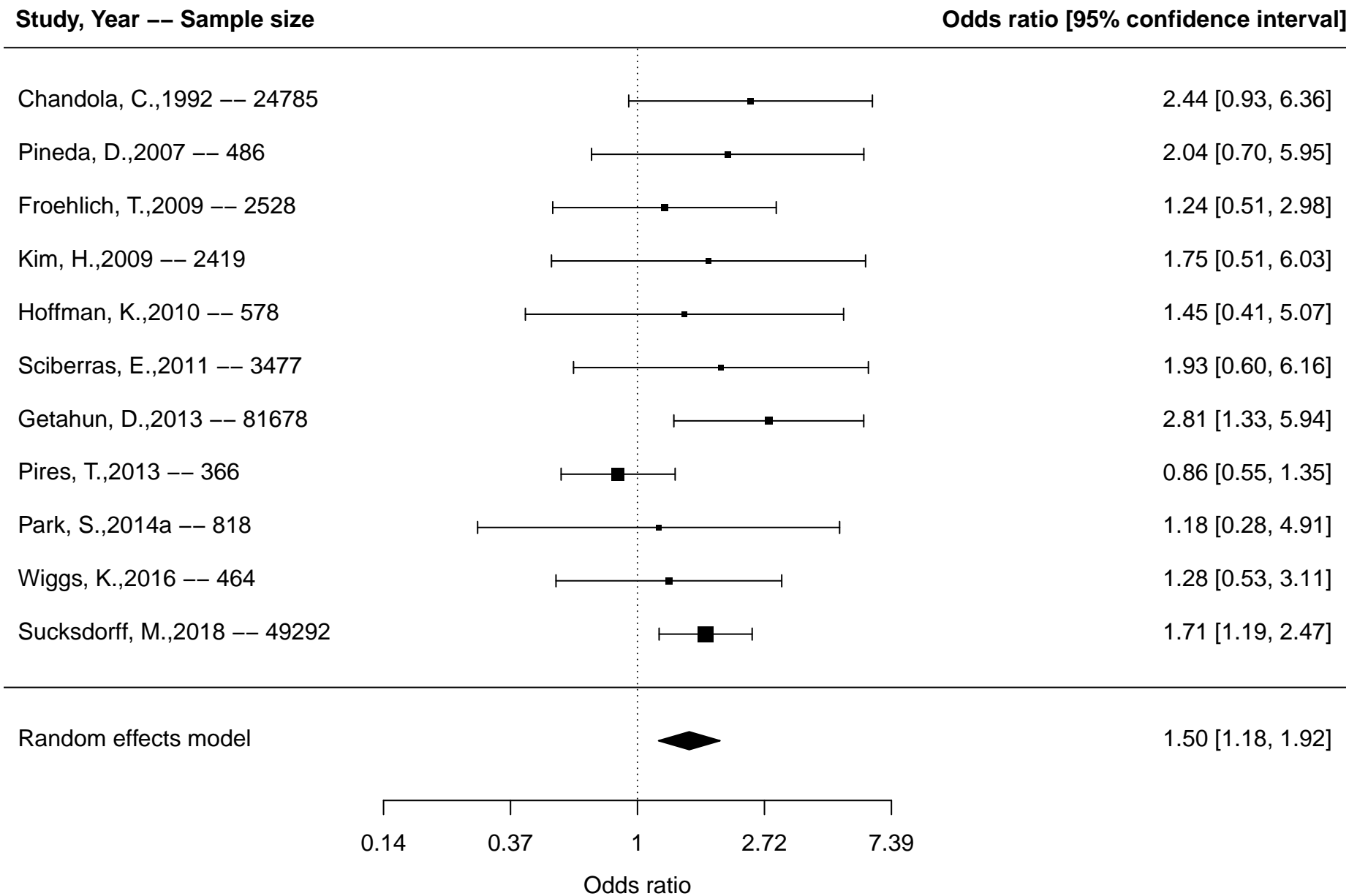


Figure S22. Forest plot of meta-analysis of neonatal illness and attention-deficit/hyperactivity disorder (ADHD) overall* based on studies reporting dichotomous outcomes



*Overall includes studies reporting on any included ADHD outcomes (diagnosis, ADHD symptoms, inattention, hyperactivity/impulsivity)

Figure S23. Forest plot of meta-analysis of neonatal illness and attention-deficit/hyperactivity disorder (ADHD) diagnosis based on studies reporting dichotomous outcomes

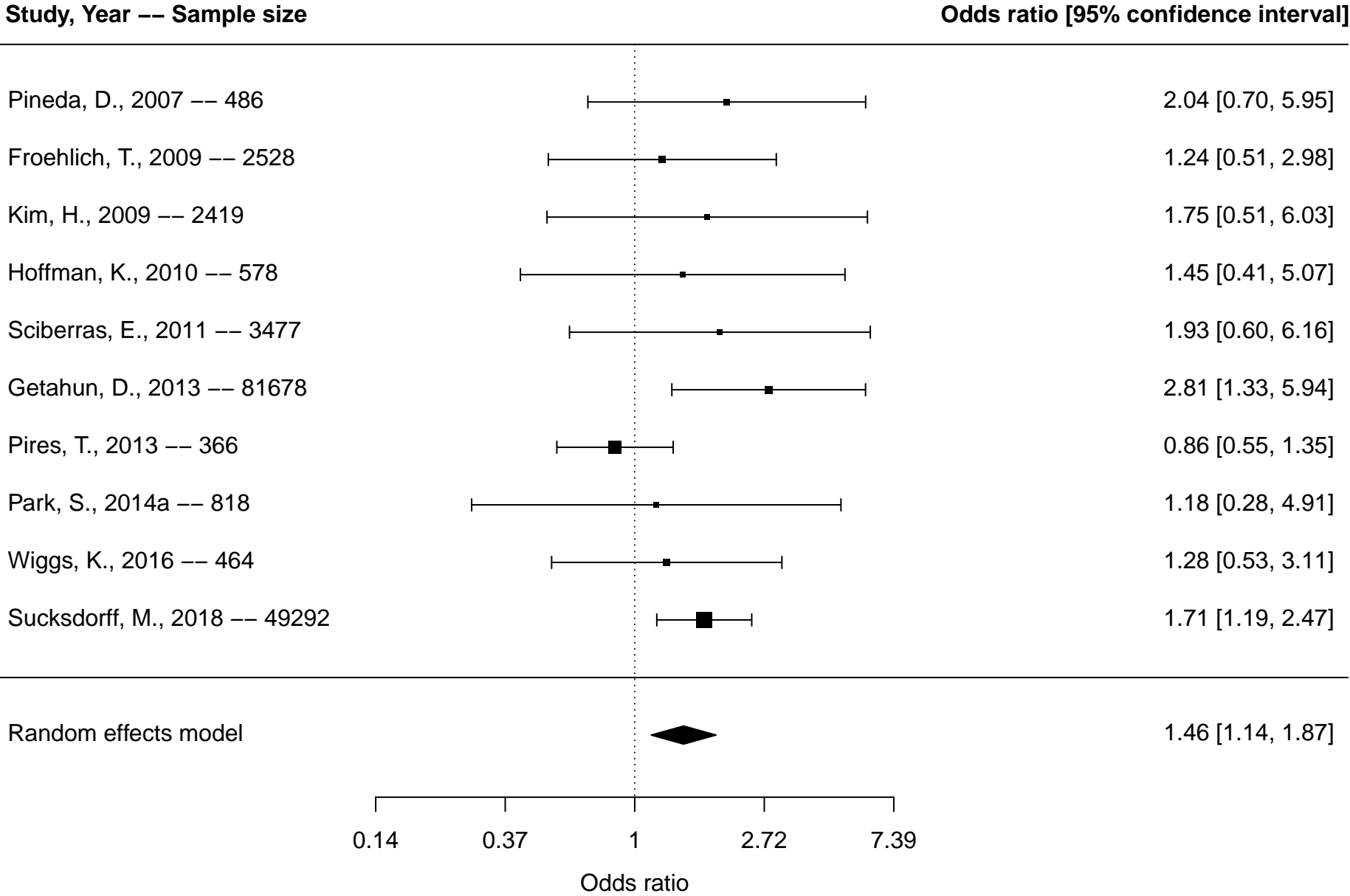
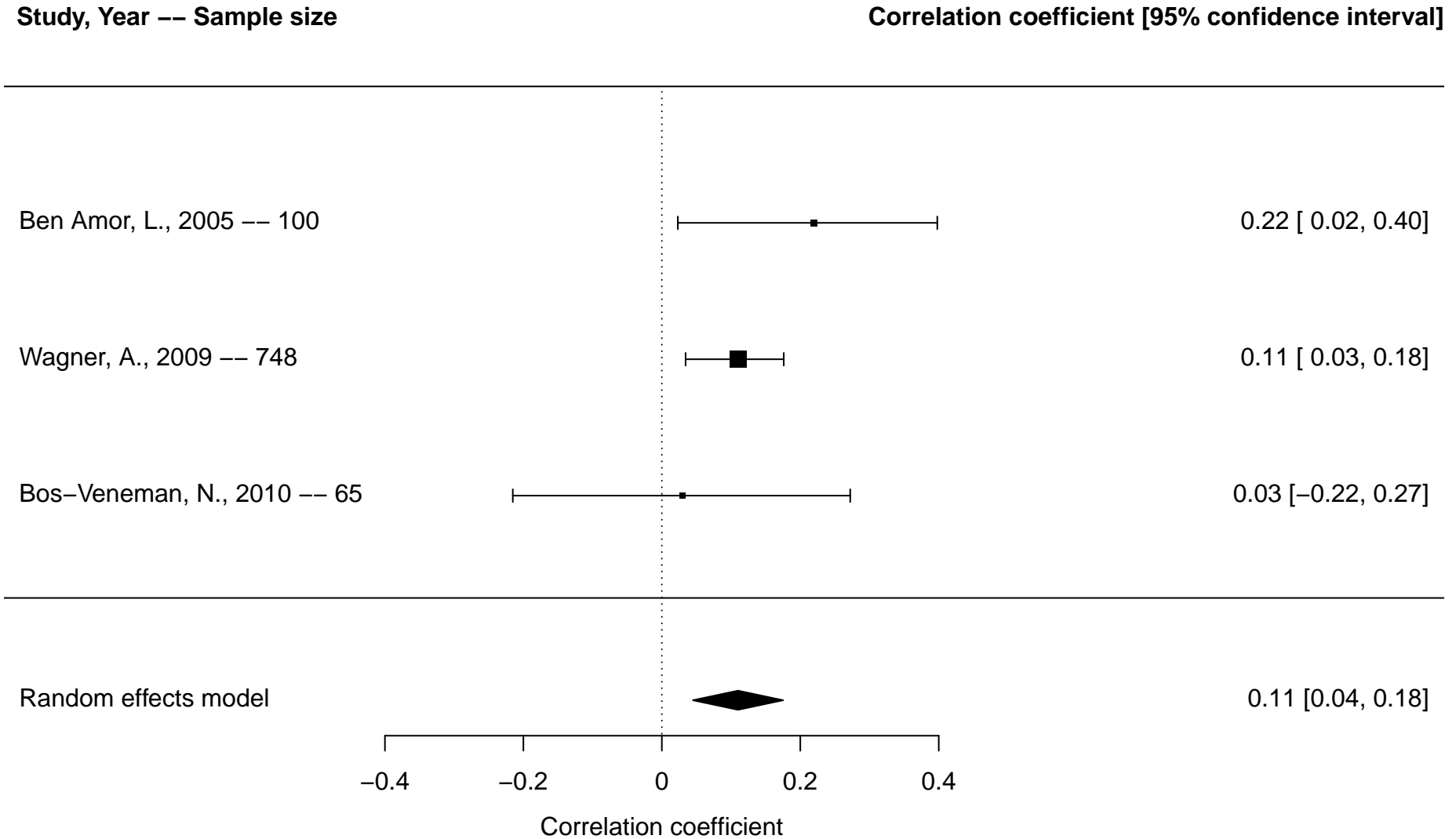
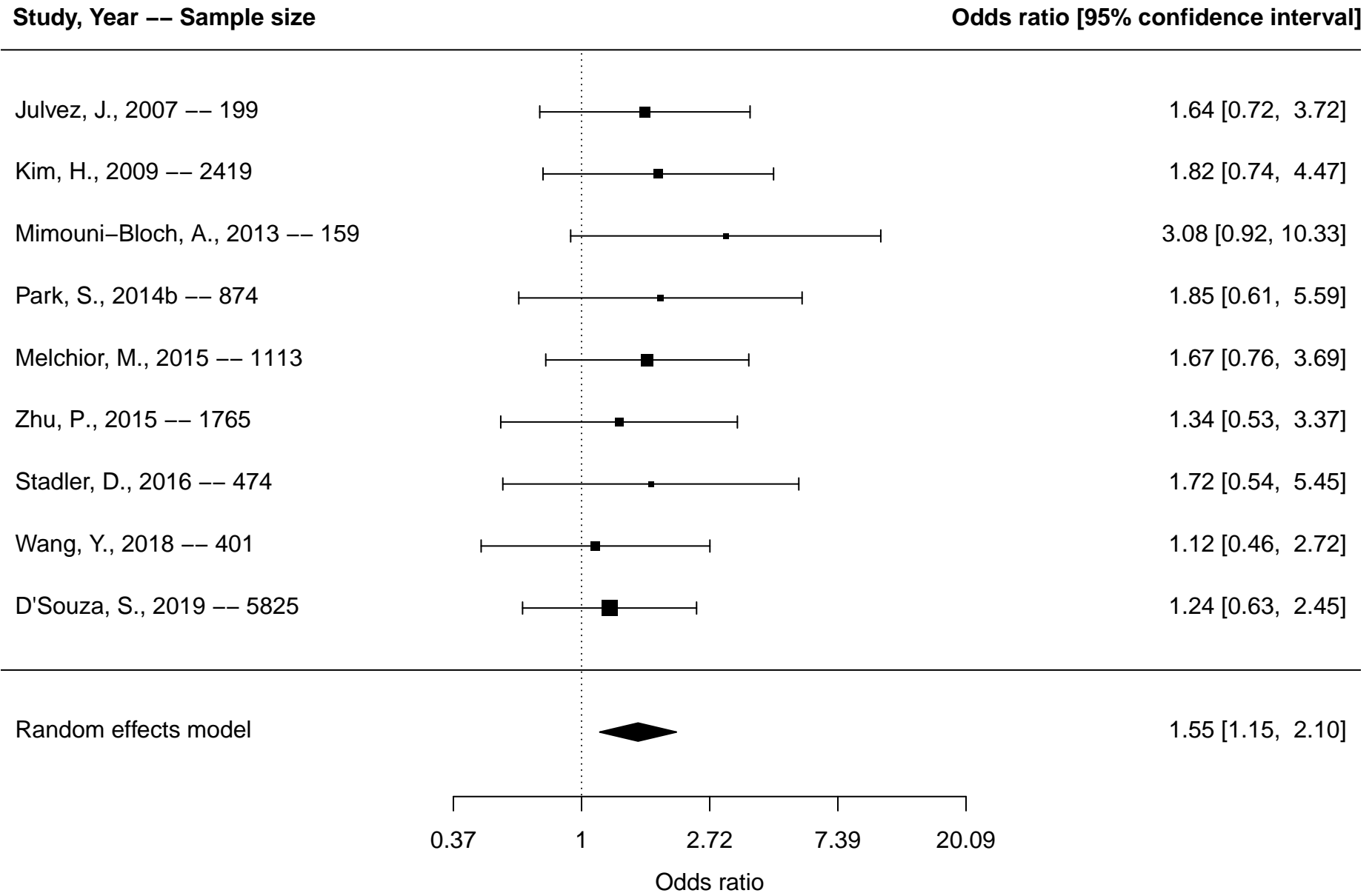


Figure S24. Forest plot of meta-analysis of neonatal illness and attention-deficit/hyperactivity disorder (ADHD) overall* based on studies reporting continuous outcomes



*Overall includes studies reporting on any included ADHD outcomes (diagnosis, ADHD symptoms, inattention, hyperactivity/impulsivity)

Figure S25. Forest plot of meta-analysis of no breastfeeding and attention-deficit/hyperactivity disorder (ADHD) overall* based on studies reporting dichotomous outcomes



*Overall includes studies reporting on any included ADHD outcomes (diagnosis, ADHD symptoms, inattention, hyperactivity/impulsivity)