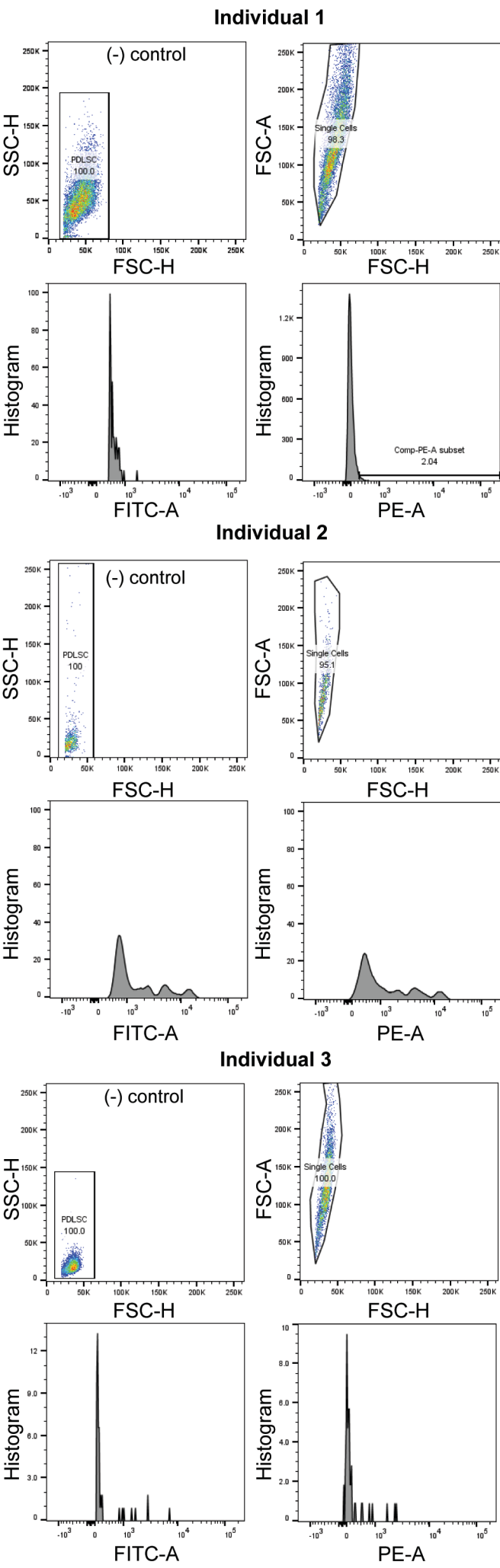
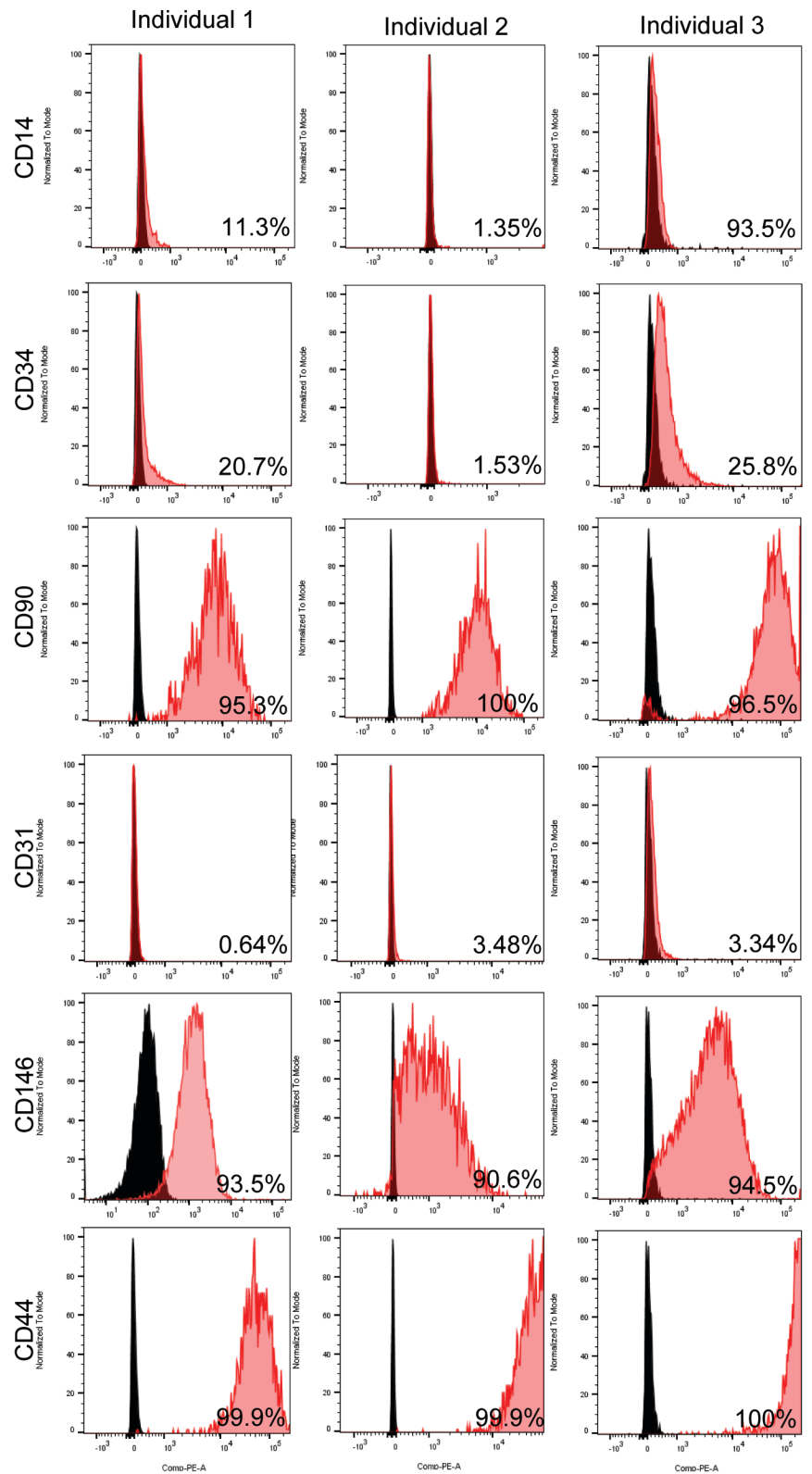


# Supplementary Figure 1

**A** PDLSC flow cytometry gating strategy for the unstained control



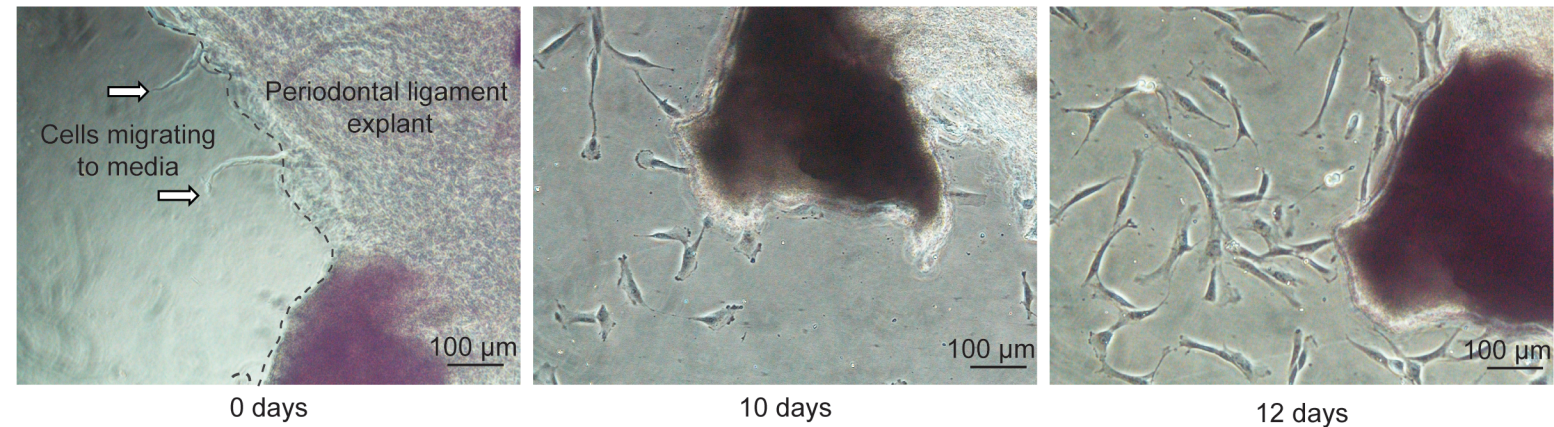
**B** Additional flow cytometry characterization



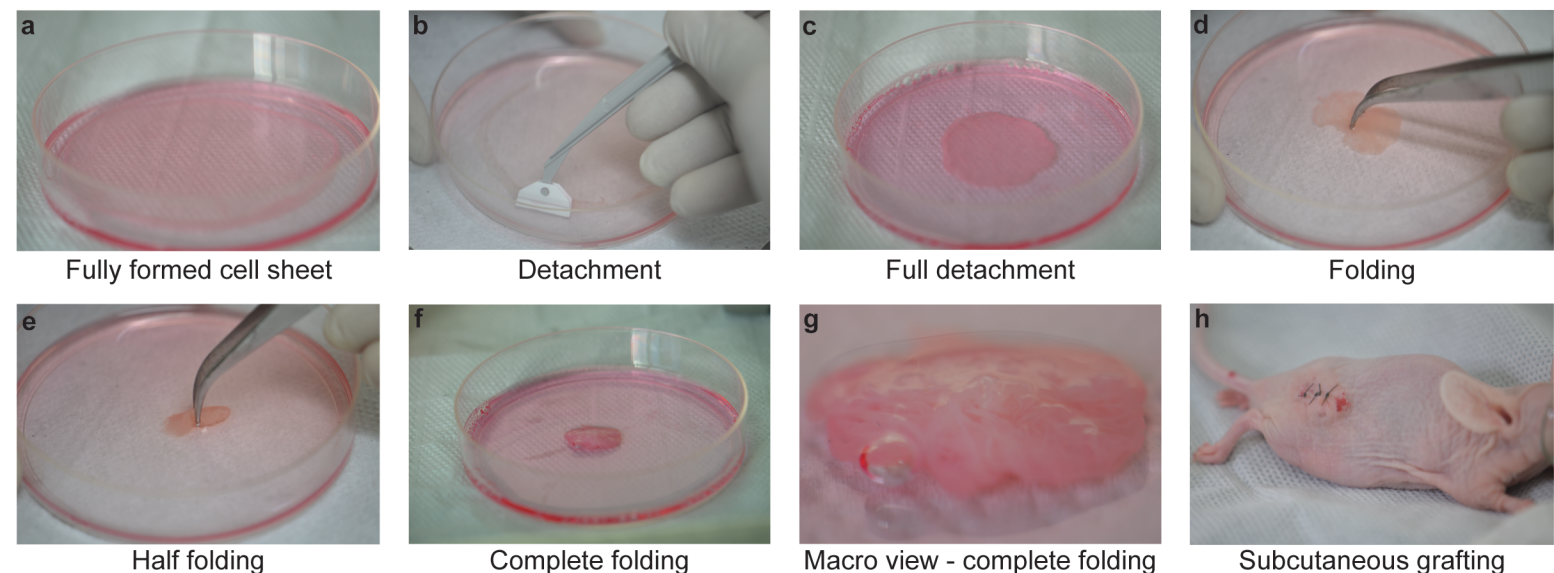
**Legends: (A)** Gating strategy for the unstained control used in the flow cytometry for the three isolated cell lines. **(B)** Additional flow cytometry markers used to characterize the phenotype from the isolated cell lines.

# Supplementary Figure 2

## A Primary cell isolation through the explant technique



## B Cell sheet detachment, folding and grafting workflow



**Legends:** (A) Primary cell culture establishment (P0) and growth after the periodontal ligament explant was acquired for 12 days. (B) After 14 days of culture, cell sheets were detached, folded and transplanted bilaterally into the subcutaneous of Balb/c nude mice (2 per mice).