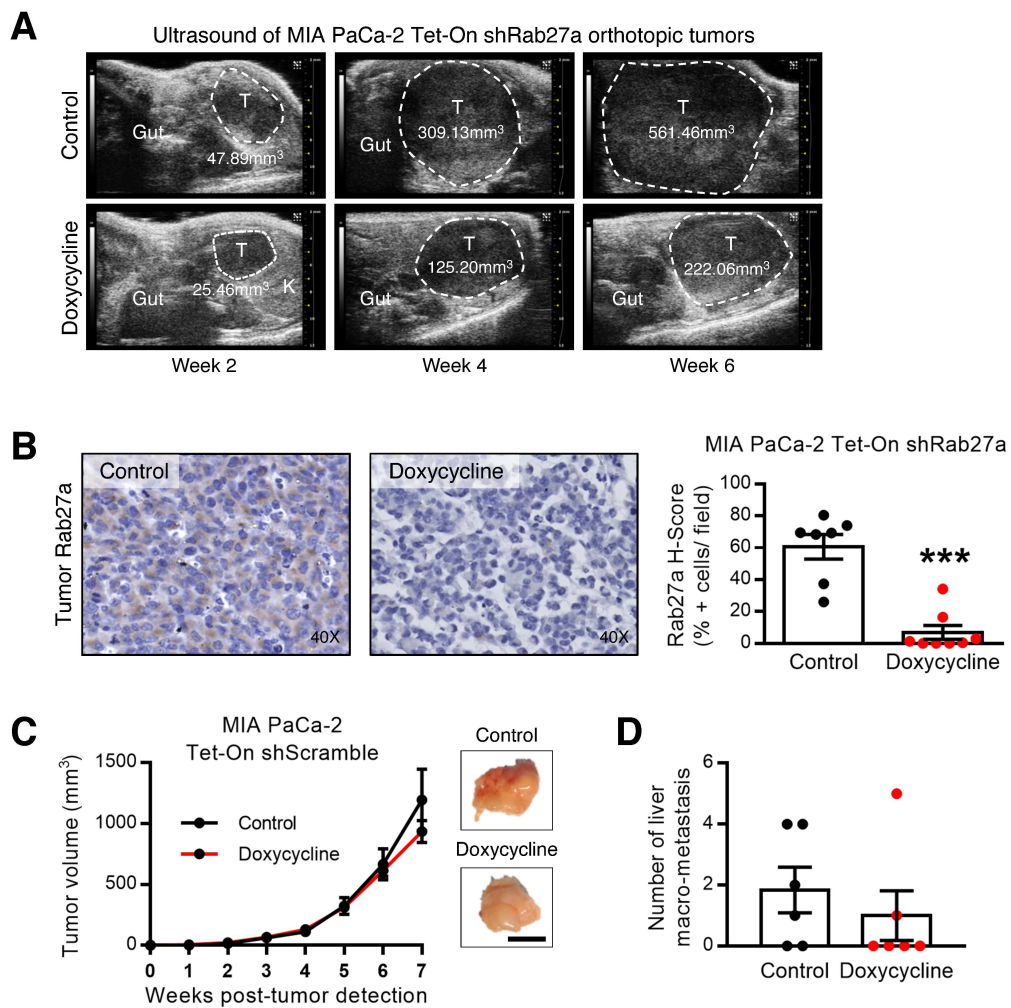


## Supplementary Figure 3



**Supplementary Figure 3 (related to Figure 3). Doxycycline treatment does not affect tumor growth in a PDAC orthotopic model. (A)** Representative ultrasound images of Mia PaCa-2 Tet-On shRab27a orthotopic tumors. T=tumor, K=kidney. **(B)** Representative IHC images and Rab27a H-score in the Mia PaCa-2 Tet-On shRab27a tumors. Control=7 mice, Doxycycline= 8 mice (Mann Whitney test  $***p<0.001$ ). **(C)** Tumor growth curve measured by ultrasound of Mia PaCa-2 Tet-On shScramble orthotopic tumors untreated (control) or treated with doxycycline (left) together with representative photos of tumors at euthanasia (right). Control=6 and Doxycycline=6 mice (two-way anova). Scale bar 10mm. **(D)** Number of liver macro-metastasis of the Mia PaCa-2 Tet-On shScramble orthotopic model. Control=6 mice, Doxycycline=6 mice (Mann Whitney test, ns).