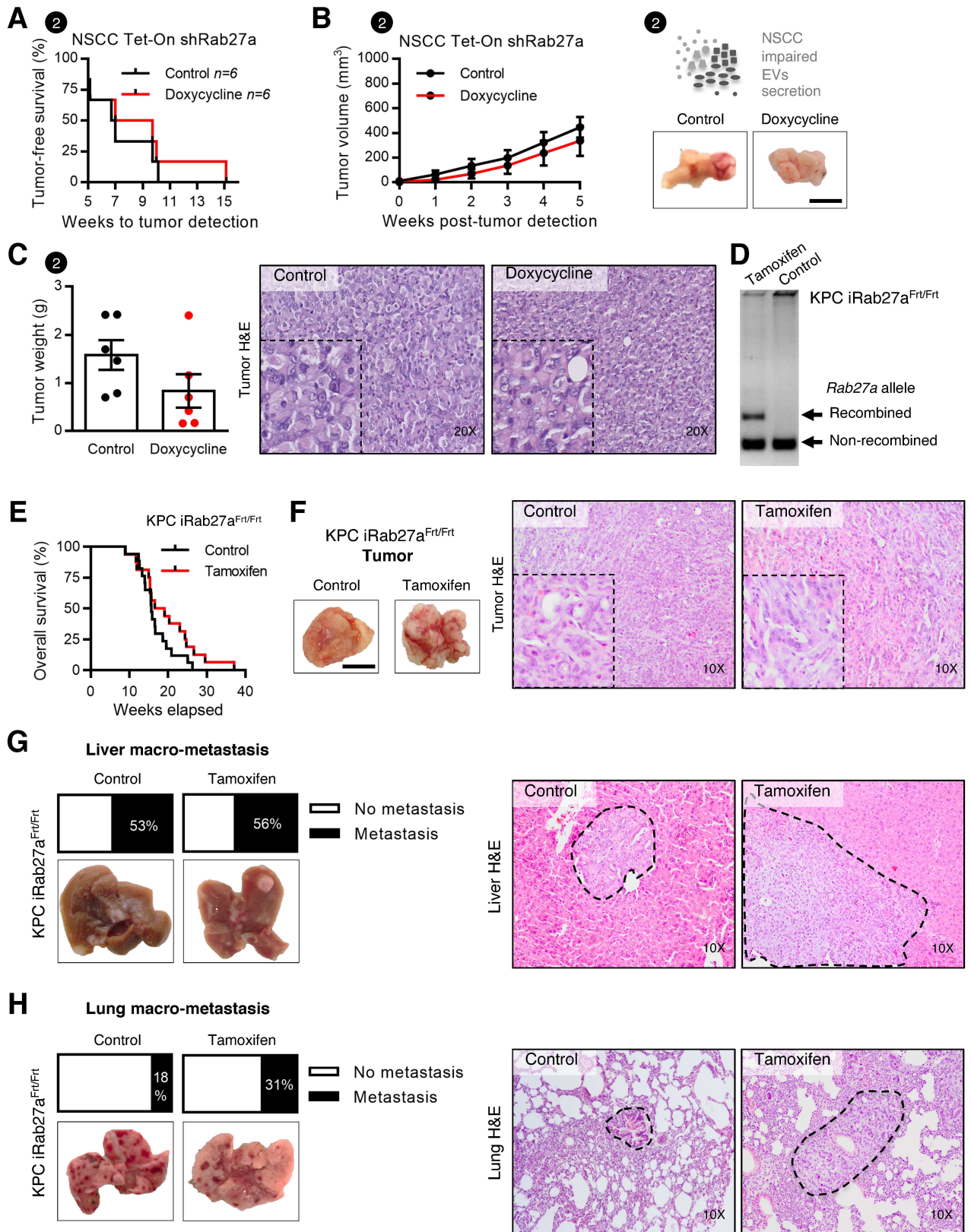


Supplementary Figure 5



Supplementary Figure 5 (related to Figure 4). Impairment of extracellular vesicles by NSCC does not impact PDAC progression in an orthotopic cell line model. (A) Kaplan Meier curve represents the number of weeks to tumor detection of mice with NSCC proficient (NSCC Tet-On shRab27a Control=6 mice) and impaired EVs secretion (NSCC Tet-On shRab27a Doxycycline=6 mice; paired t-test). **(B)** Tumor growth curve measured by ultrasound of mice with NSCC proficient (NSCC Tet-On shRab27a Control=6 mice) and impaired EVs secretion (NSCC Tet-On shRab27a Doxycycline=6 mice; two-way anova). Representative photos of pancreas tumors (right). Scale bar 10mm. **(C)** Quantification of tumor weight of groups described in (A) and (B) (Wilcoxon test). Representative H&E stainings of pancreas tumors (right). **(D)** Representative photo of an agarose gel with the results of a PCR of the Rab27a^{FRT/FRT} allele recombination in pancreatic tumors of KPC iRab27a^{Frt/Frt}. **(E)** Kaplan Meier curve of the overall survival of the KPC iRab27a^{Frt/Frt} model (control, KPC iRab27a^{Frt/Frt} non-treated or KPC Rab27A^{Frt/Frt} without the *R26^{LSL-FLPOERT2/+}* allele treated with tamoxifen, n=17; KPC iRab27A^{Frt/Frt} tamoxifen treated, n=16). **(F)** Representative tumor images (left) and H&E staining (right) of the KPC iRab27a^{Frt/Frt} model (control, KPC iRab27A^{Frt/Frt} non-treated and KPC iRab27A^{Frt/Frt} tamoxifen treated – Rab27A KO). Scale bar 10mm. **(G)** Incidence of liver macro-metastasis in KPC iRab27a^{Frt/Frt} model (control, KPC iRab27A^{Frt/Frt} non-treated or KPC Rab27A^{Frt/Frt} without the *R26^{LSL-FLPOERT2/+}* allele treated with tamoxifen, n=17; KPC iRab27A^{Frt/Frt} tamoxifen treated, n=16). Representative liver images (bottom) and H&E staining of macro-metastasis (right, dashed lines identify site of metastasis). **(H)** Incidence of lung macro-metastasis in KPC iRab27a^{Frt/Frt} model (control, KPC iRab27A^{Frt/Frt} non-treated or KPC Rab27A^{Frt/Frt} without the *R26^{LSL-FLPOERT2/+}* allele treated with tamoxifen, n=17; KPC iRab27A^{Frt/Frt} tamoxifen treated, n=16). Representative lung images (bottom) and H&E staining of macro-metastasis (right, dashed lines identify sites of metastasis). Data are mean±SEM.