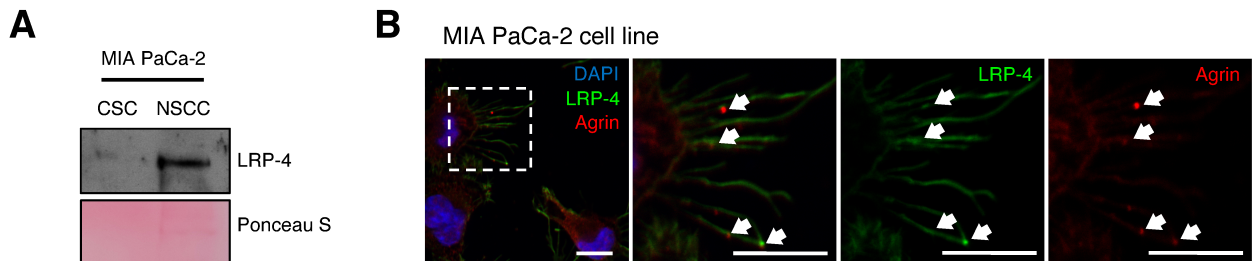


## Supplementary Figure 9



**Supplementary Figure 9 (related to Figure 6). LRP-4 receptor is enriched in NSCC. (A)** Western blot of LRP-4 in CSC and NSCC from MIA PaCa-2 cell line. Same number of cells was used for each subpopulation to perform this experiment. Ponceau S was used as loading control. **(B)** Representative immunofluorescence analysis of LRP-4 (green) and agrin (red) in MIA PaCa-2 cells. Nuclei stained with DAPI (blue). Arrows identify co-localization between agrin and LRP-4. Scale bar 10 $\mu$ m.