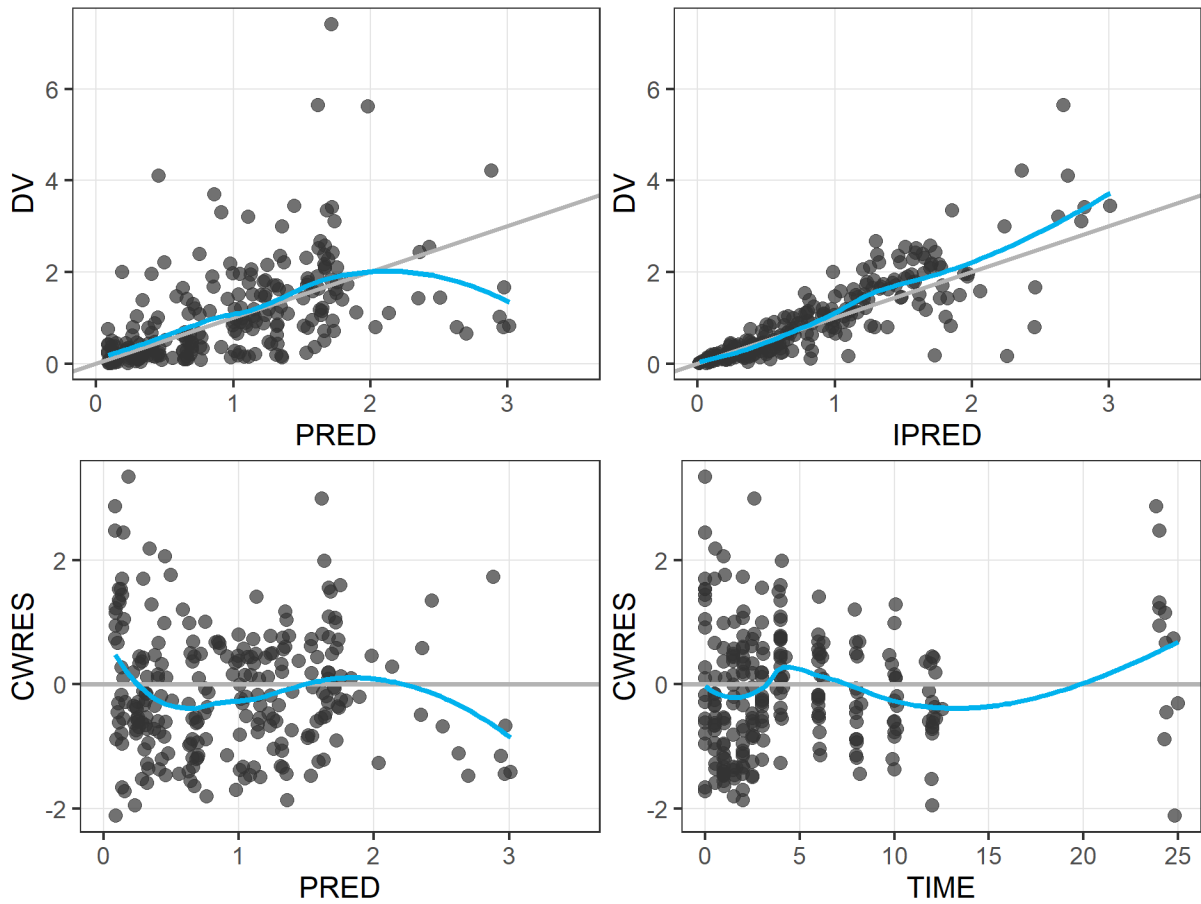


1

2 **FIG S1** Population pharmacokinetic model for prothionamide (PTO).

3

4



5

6 **FIG S2** Goodness of fit (GOF) plots for final population pharmacokinetics model for  
7 prothionamide (PTO). (Upper left panel: Observed concentrations versus(vs.)  
8 population predicted PTO concentrations, Upper right panel: Observed concentrations  
9 vs. individual predicted PTO concentrations, Lower left panel: Conditional weighted  
10 residual vs. population predicted PTO concentrations, Lower right panel: Conditional  
11 weighted residual vs. time; Grey line represents the lines of identity or unity; the blue  
12 line represents the smooth of the data)

13 **TABLE S1. Comparisons of pharmacokinetics target parameters among weight-band (WB) and fixed dosing regimens for**  
 14 **prothionamide**

Schedule		BID Schedule						
Regimen	Weight-band (WB)	Fixed	Ratio	Weight-band (WB)	Fixed	Ratio		
Dose	250mg for 40~50kg	250mg for 40~67kg	Fixed 250mg/WB 250mg	375mg for 50~67kg	375mg for 40~67kg	Fixed 375mg/WB 375mg	WB 375mg/WB 250mg	Fixed 375mg/WB 250mg
$C_2$ (5th ~ 95th)	1.56 (0.52~4.69)	1.54 (0.58~3.74)	0.99	2.03 (0.81~5.34)	2.19 (1.03~5.68)	1.08	1.31	1.41
$C_6$ (5th ~ 95th)	0.94 (0.20~3.04)	0.78 (0.16~2.96)	0.83	1.20 (0.14~3.72)	1.18 (0.20~3.85)	0.98	1.29	1.26
$C_{max}$ (5th ~ 95th)	1.88 (0.74~4.69)	1.68 (0.72~4.00)	0.89	2.54 (1.08~5.99)	2.68 (1.23~6.18)	1.06	1.35	1.43
$C_{min}$ (5th ~ 95th)	0.47 (0.06~2.34)	0.40 (0.05~2.23)	0.85	0.53 (0.05~2.62)	0.58 (0.10~2.81)	1.09	1.14	1.24
$AUC_{ss-tau}$ (5th ~ 95th)	11.7 (3.98~35.2)	9.78 (3.53~34.2)	0.84	14.27 (4.21~41.58)	15.69 (5.53~44.83)	1.10	1.22	1.34
$AUC_{ss-24}$ (5th ~ 95th)	23.4 (7.95~70.3)	19.56 (7.07~67.4)	0.84	28.5 (8.42~83.2)	30.74 (10.9~86.3)	1.07	1.21	1.31

Schedule			QD Schedule					
Regimen	Weight-band (WB)	Fixed	Ratio	Weight-band (WB)	Fixed	Ratio	Ratio	Ratio
Dose	500mg for 40~50kg	500mg for 40~67kg	Fixed 500mg/WB 500mg	750mg for 50~67kg	750mg for 40~67kg	Fixed 750mg/WB 750mg	WB 750mg/WB 500mg	Fixed 750mg/WB 500mg
C <sub>2</sub> (5th ~ 95th)	0.48 (0.05~2.48)	0.47 (0.03~2.13)	0.99	0.56 (0.05~3.39)	0.65 (0.08~3.02)	1.15	1.18	1.36
C <sub>6</sub> (5th ~ 95th)	0.41 (0.04~2.39)	0.40 (0.03~1.85)	0.97	0.47 (0.05~2.90)	0.50 (0.08~2.75)	1.07	1.15	1.23
C <sub>max</sub> (5th ~ 95th)	3.43 (1.40~8.15)	3.36 (1.37~7.64)	0.98	4.54 (2.03~10.7)	4.45 (2.21~10.51)	0.98	1.32	1.30
C <sub>min</sub> (5th ~ 95th)	0.35 (0.03~2.31)	0.34 (0.03~1.64)	0.97	0.38 (0.04~2.60)	0.43 (0.07~2.46)	1.13	1.07	1.22
AUC <sub>ss-tau</sub> (5th ~ 95th)	23.25 (7.29~73.7)	22.35 (7.34~65.7)	0.96	28.66 (10.2~103.2)	29.5 (9.87~94.0)	1.03	1.23	1.27

15 C<sub>2</sub>: Plasma concentration(ug/mL) at 2 hours after dose, C<sub>6</sub>: plasma concentration(ug/mL) at 6 hours after dose, C<sub>max</sub>: peak  
16 concentrations, C<sub>min</sub>: trough concentrations, AUC<sub>ss-tau</sub>: Area under the plasma concentration at steady state in dosing interval, AUC<sub>ss-</sub>  
17 <sub>24</sub>: Area under the plasma concentration at steady state for 24 hours.