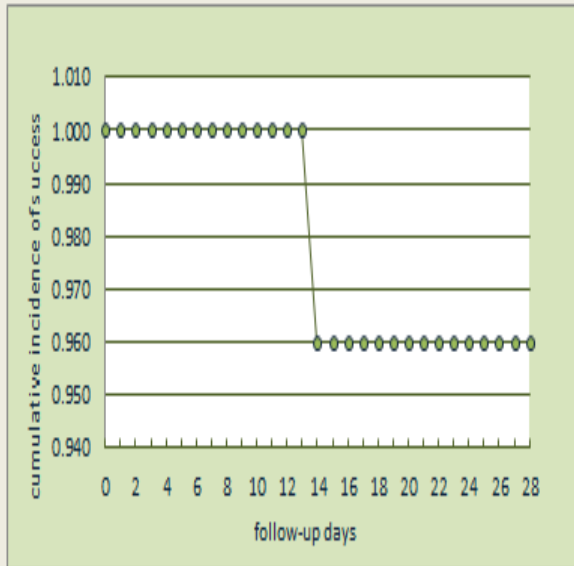


Kaplan-Meier survival curve

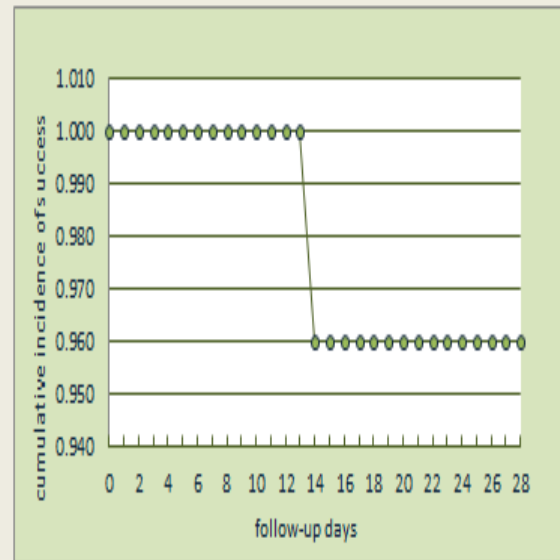
without PCR correction



| Number of patients | |
|---|----|
| ACPR day 28 | 48 |
| Censored (lost to follow-up, withdrawals) | 10 |
| Treatment failures | 2 |

| | | 95% CI |
|---|-------|--------------|
| Cumulative incidence of success, day 28 | 0.960 | (0.849-0.99) |
| Cumulative incidence of failure, day 28 | 0.040 | (0.01-0.151) |

with PCR correction



| Number of patients | |
|---|----|
| ACPR day 28 | 48 |
| Censored (lost to follow-up, withdrawals, reinfections) | 10 |
| Treatment failures (PCR confirmed recrudescence) | 2 |

| | | 95% CI |
|---|-------|--------------|
| Cumulative incidence of success, day 28 | 0.960 | (0.849-0.99) |
| Cumulative incidence of failure, day 28 | 0.040 | (0.01-0.151) |

Figure S1: Kaplan-meier analysis of adequate clinical and parasitological response rate (ACPR) of Artemether-Lumefantrine, western Ethiopia, September to December 2020.