

## Supplemental Digital Content 8

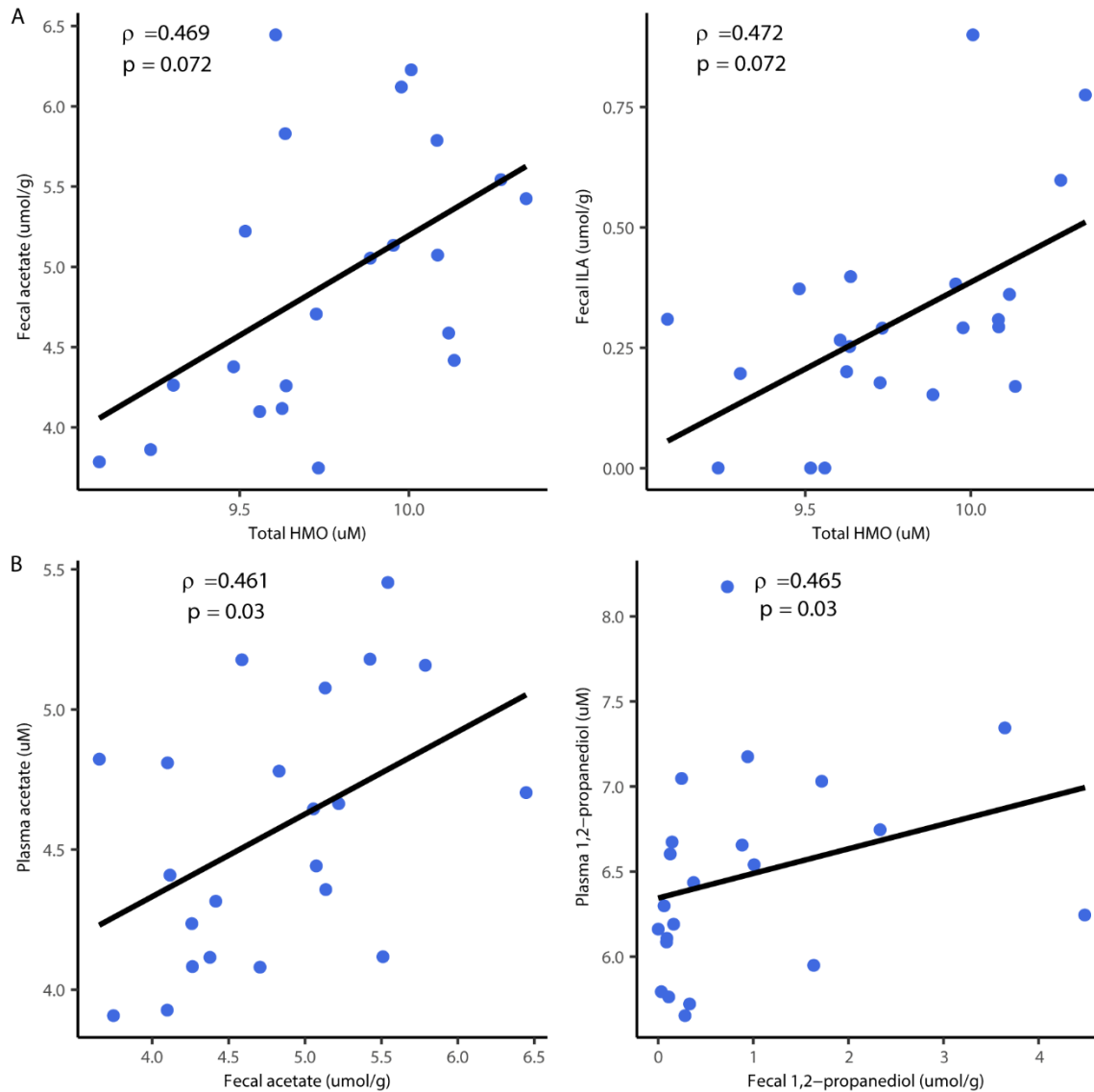


Figure. Fecal metabolites are associated with total milk oligosaccharides and their concentrations in plasma for infants receiving *B. infantis* at 32 weeks CGA. (A) Spearman's correlations between fecal acetate, ILA and total HMOs. (B) Spearman's correlations between fecal and plasma acetate or 1,2-propanediol. Non-secretor milk samples ( $2'$ -FL < 100 uM) were removed before analysis. Data shown are generalized log transformed ( $\log(y + \sqrt{y^2 + 1})$ ) and FDR corrected for multiple comparisons. Total HMO is the sum of  $2'$ -fucosyllactose,  $3'$ -fucosyllactose, Lacto-N-fucopentaose I, Lacto-N-fucopentaose II, Lacto-N-fucopentaose III, Lactodifucotetraose, Lacto-N-tetraose, Lacto-N-neotetraose,  $3'$ -sialyllactose and  $6'$ -sialyllactose.