

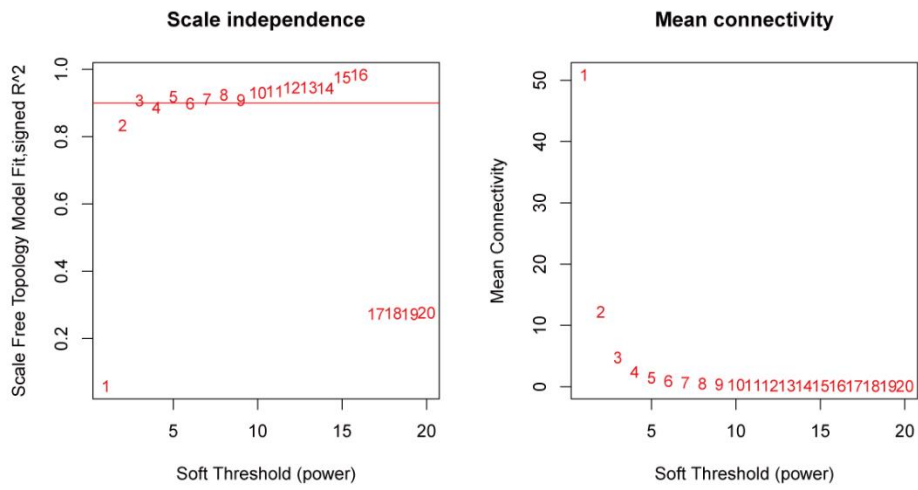
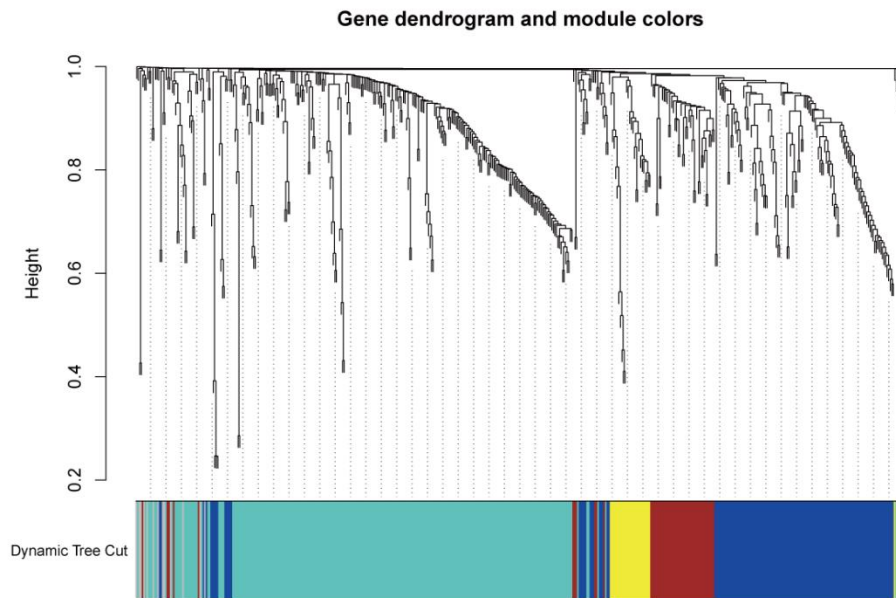
A**B**

Fig S1 (A) The scale-free fit index and mean connectivity for various soft-thresholding powers.

(B) Module identification based on dynamic pruning tree. [Figures created by R, version 4.0.4.]

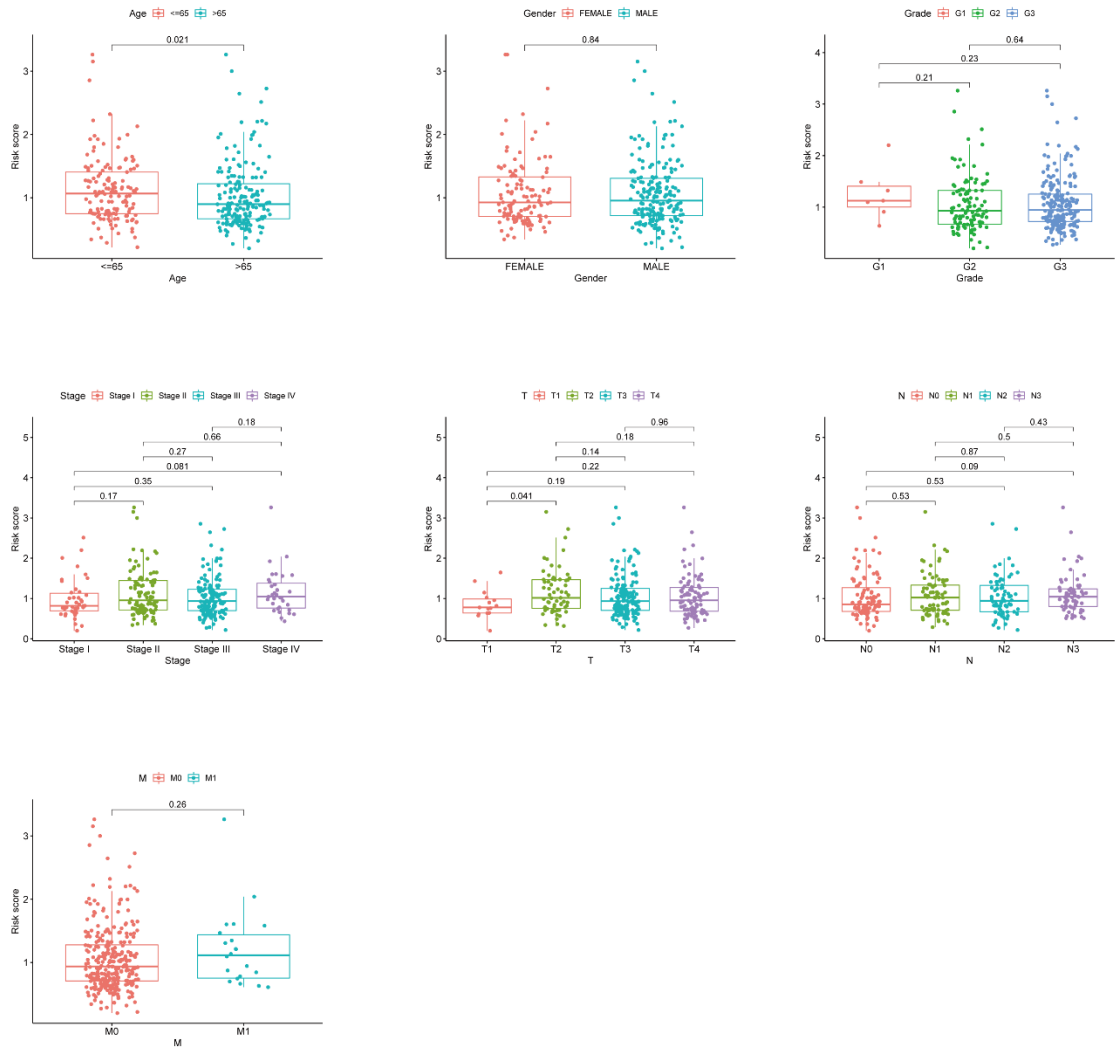
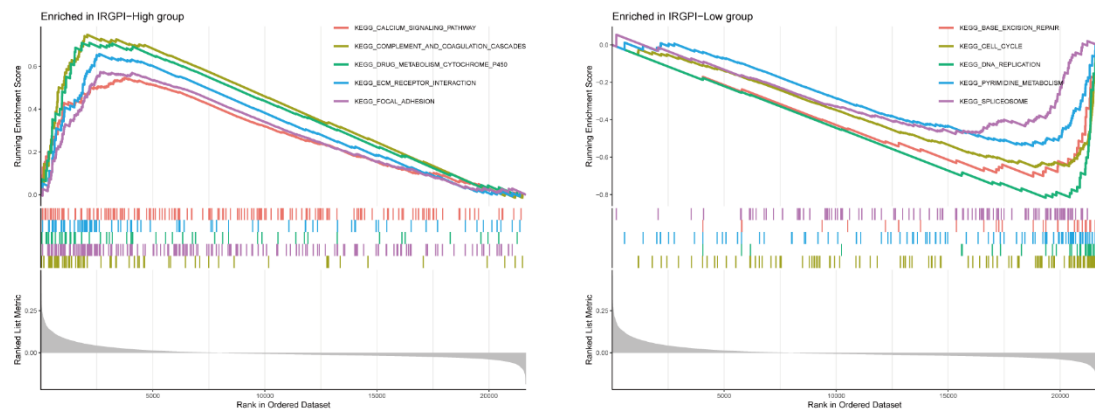


Fig. S2 Correlation between clinical characteristics and IRGPI. [Figures created by R, version 4.0.4.]

A



B

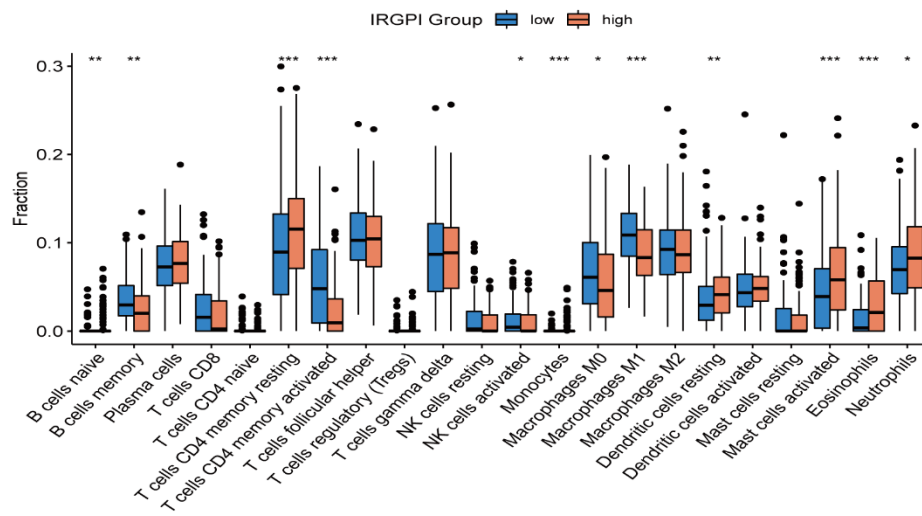


Fig S3 Biological pathways and immune cell infiltration validated in the GSE62254 cohort (A) Gene sets enriched in IRGPI-High and IRGPI-Low groups in the GSE62254 cohort. (B) The proportions of TME cells in different IRGPI groups in the GSE62254 cohort. [Figures created by R, version 4.0.4.]