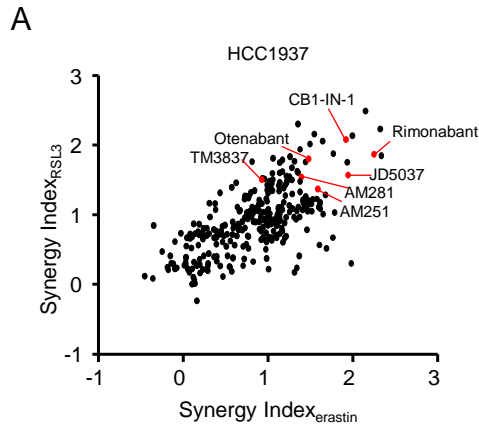


# Supplementary Figure 1



**B**

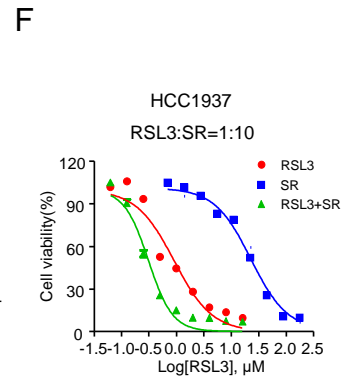
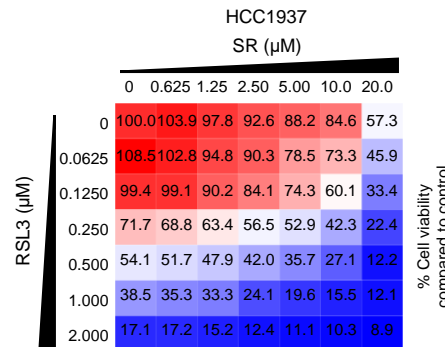
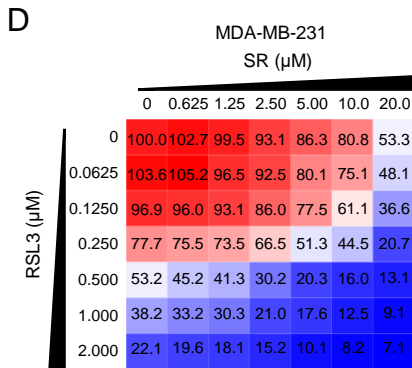
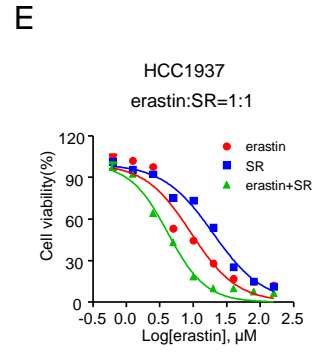
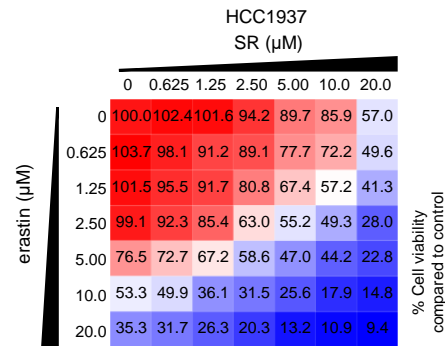
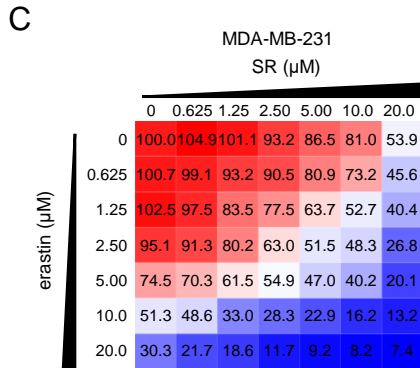
HCC1937

DMSO	+	-	-	-	-	-
erastin (5.0 $\mu$ M)	-	+	-	-	-	-
RSL3 (0.5 $\mu$ M)	-	-	+	-	-	-
ML210 (1.0 $\mu$ M)	-	-	-	+	-	-
FIN56 (0.5 $\mu$ M)	-	-	-	-	+	-
CIL56 (0.5 $\mu$ M)	-	-	-	-	-	+

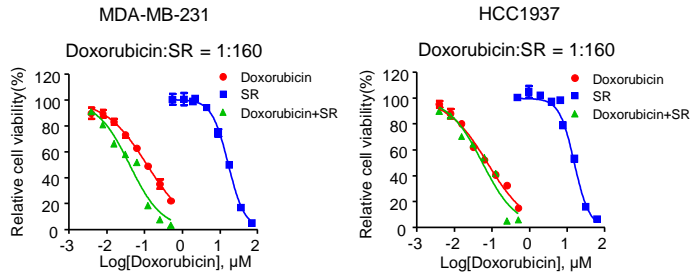
DMSO	100	76	55	54	55	57
AM251	94	58	53	51	54	49
AM281	85	62	40	39	61	37
JD5037	83	45	42	39	53	31
Rimonabant	83	43	25	28	29	21
Otenabant	89	60	34	47	45	55
TM3837	83	67	48	46	58	43
CB1-IN-1	89	39	22	45	47	46

% Cell viability compared to control



# Supplementary Figure 2

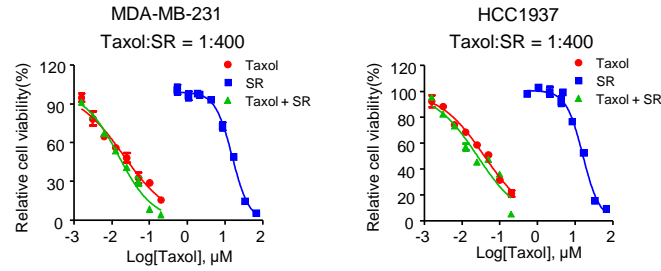
**A**



CI values for SR + Doxorubicin

Cell line	Fa = 0.5	Fa = 0.75	Fa = 0.90
MDA-MB-231	5.51	4.45	3.62
HCC1937	6.18	8.61	12.98

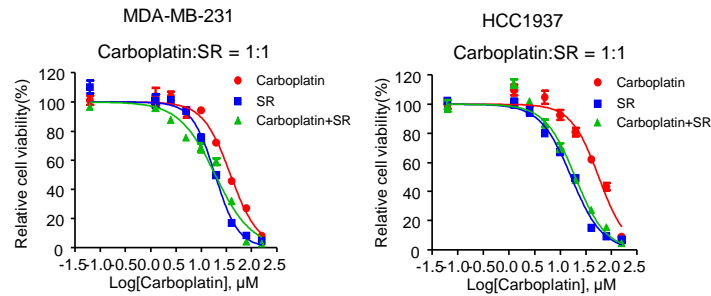
**B**



CI values for SR + Taxol

Cell line	Fa = 0.5	Fa = 0.75	Fa = 0.90
MDA-MB-231	8.25	6.81	5.81
HCC1937	3.47	3.65	4.08

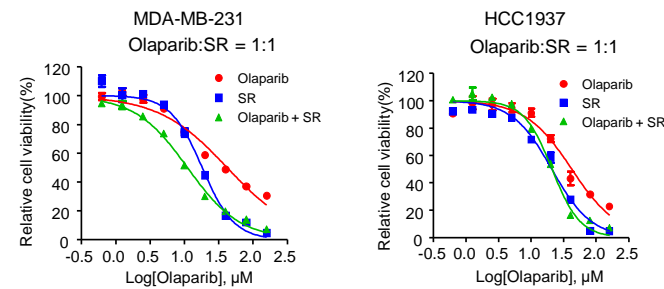
**C**



CI values for SR + Carboplatin

Cell line	Fa = 0.5	Fa = 0.75	Fa = 0.90
MDA-MB-231	3.39	2.84	2.38
HCC1937	7.67	7.75	7.90

**D**

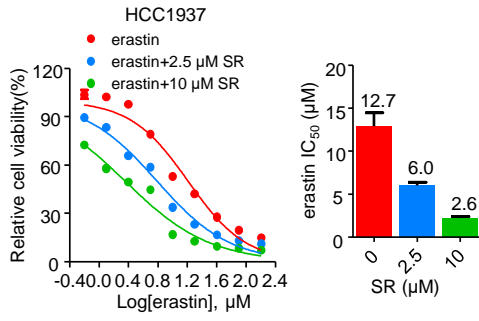


CI values for SR + Olaparib

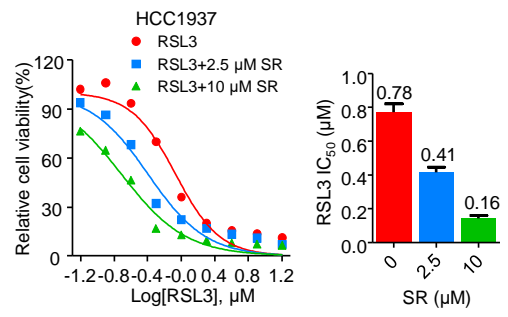
Cell line	Fa = 0.5	Fa = 0.75	Fa = 0.90
MDA-MB-231	4.03	3.25	2.63
HCC1937	7.36	5.21	3.69

# Supplementary Figure 3

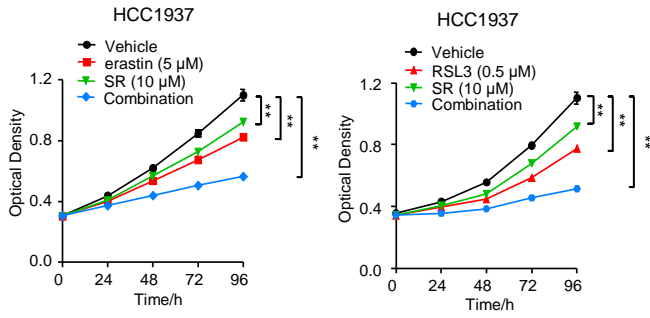
**A**



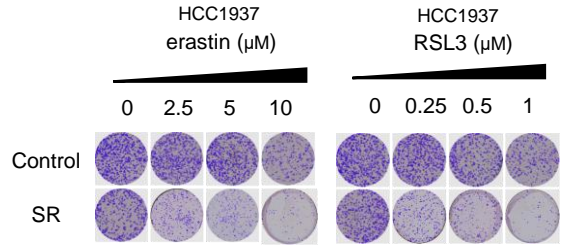
**B**



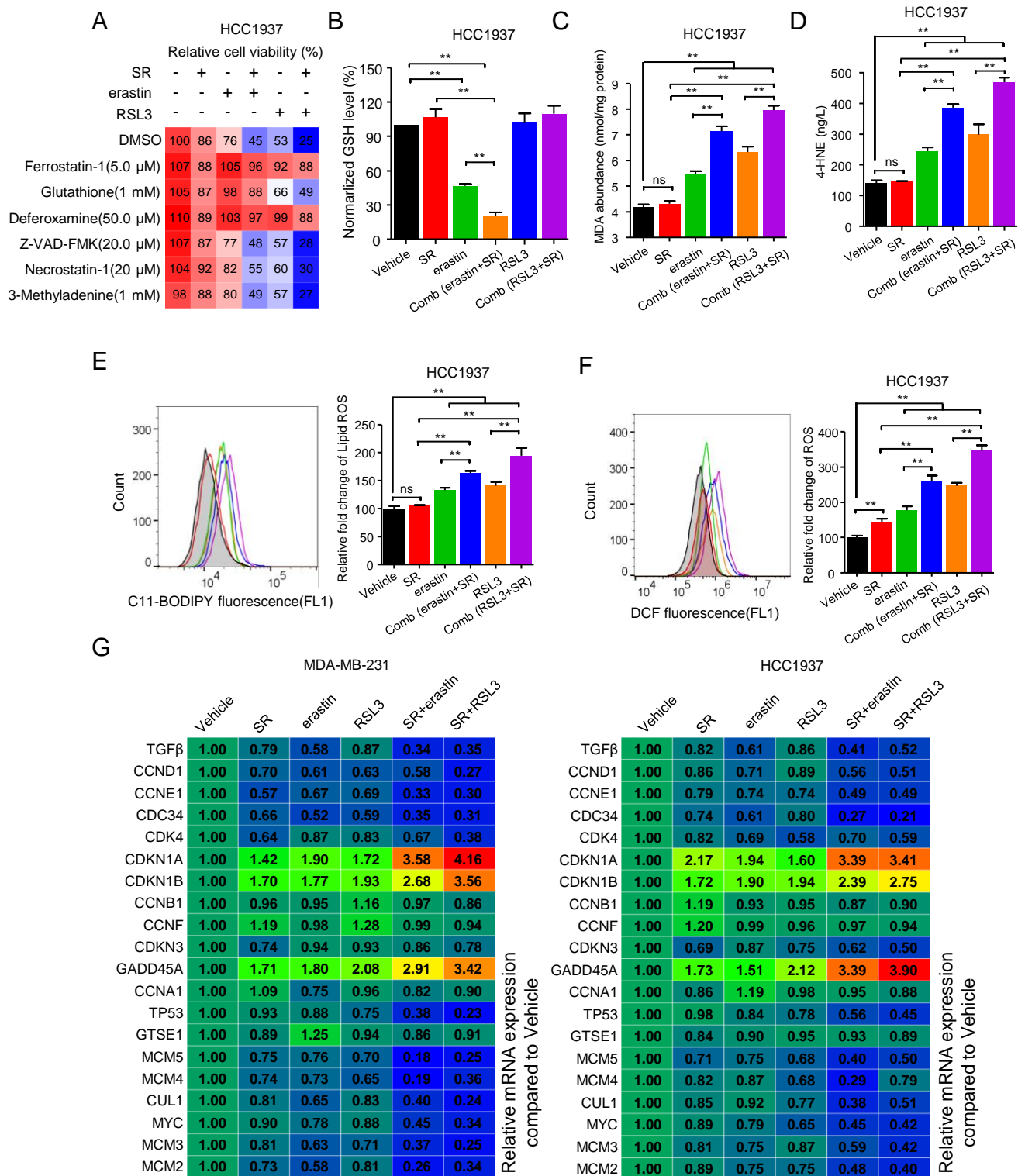
**C**



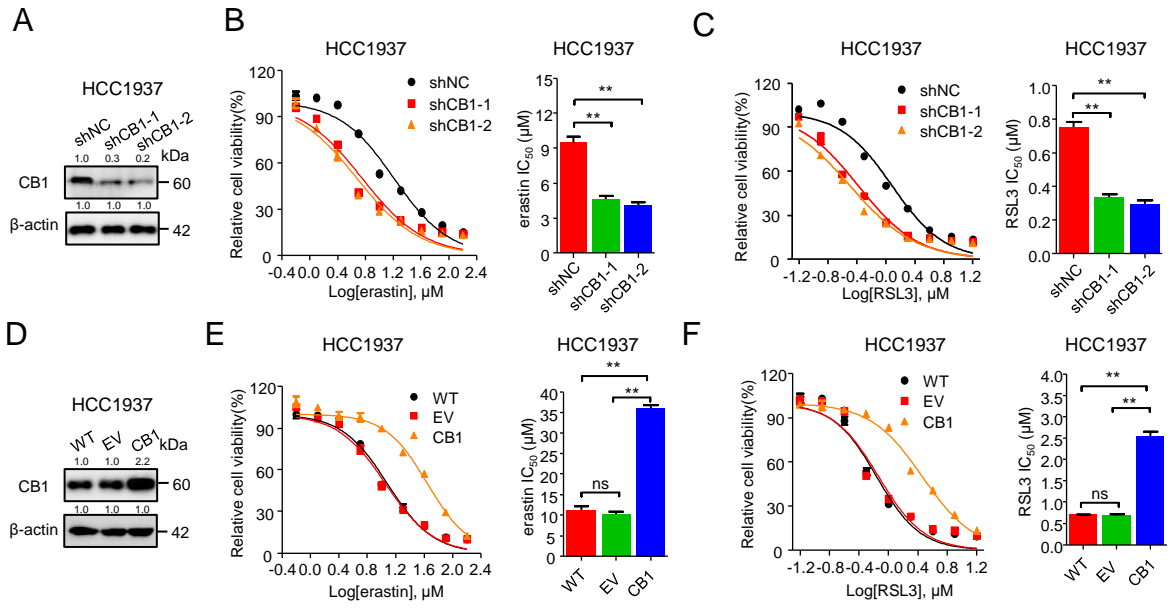
**D**



# Supplementary Figure 4

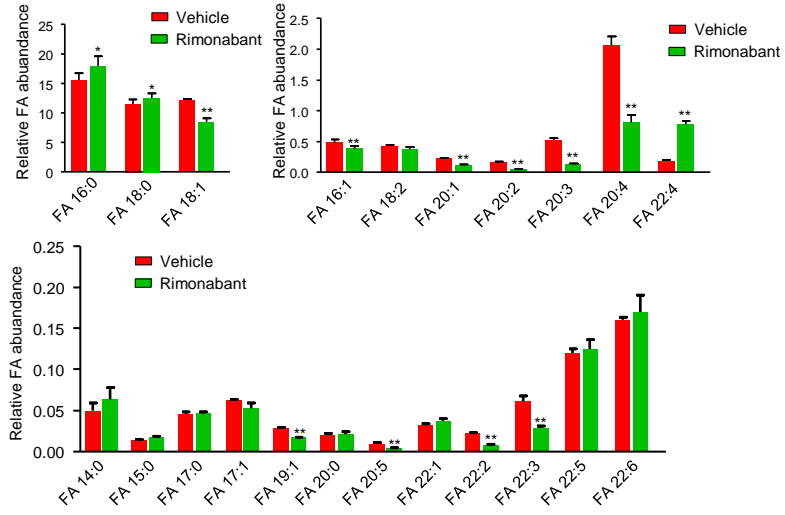


# Supplementary Figure 5

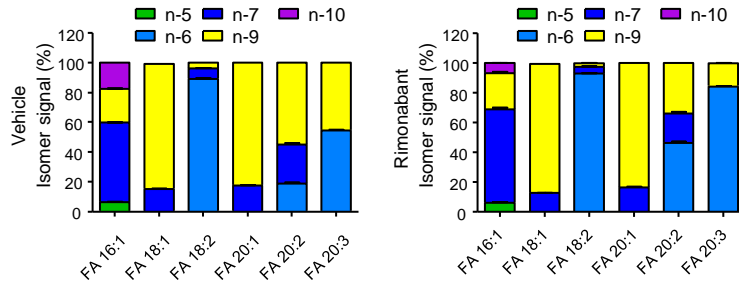


# Supplementary Figure 6

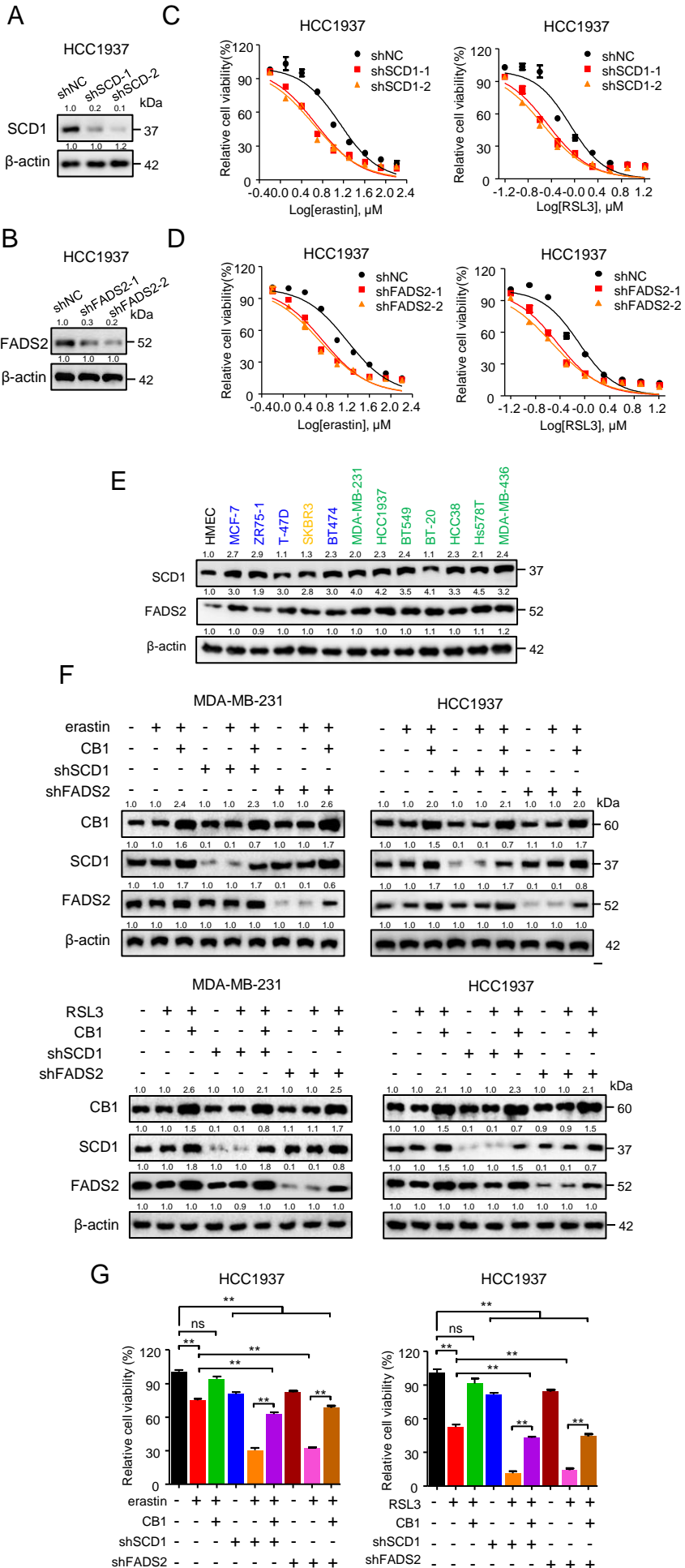
**A**



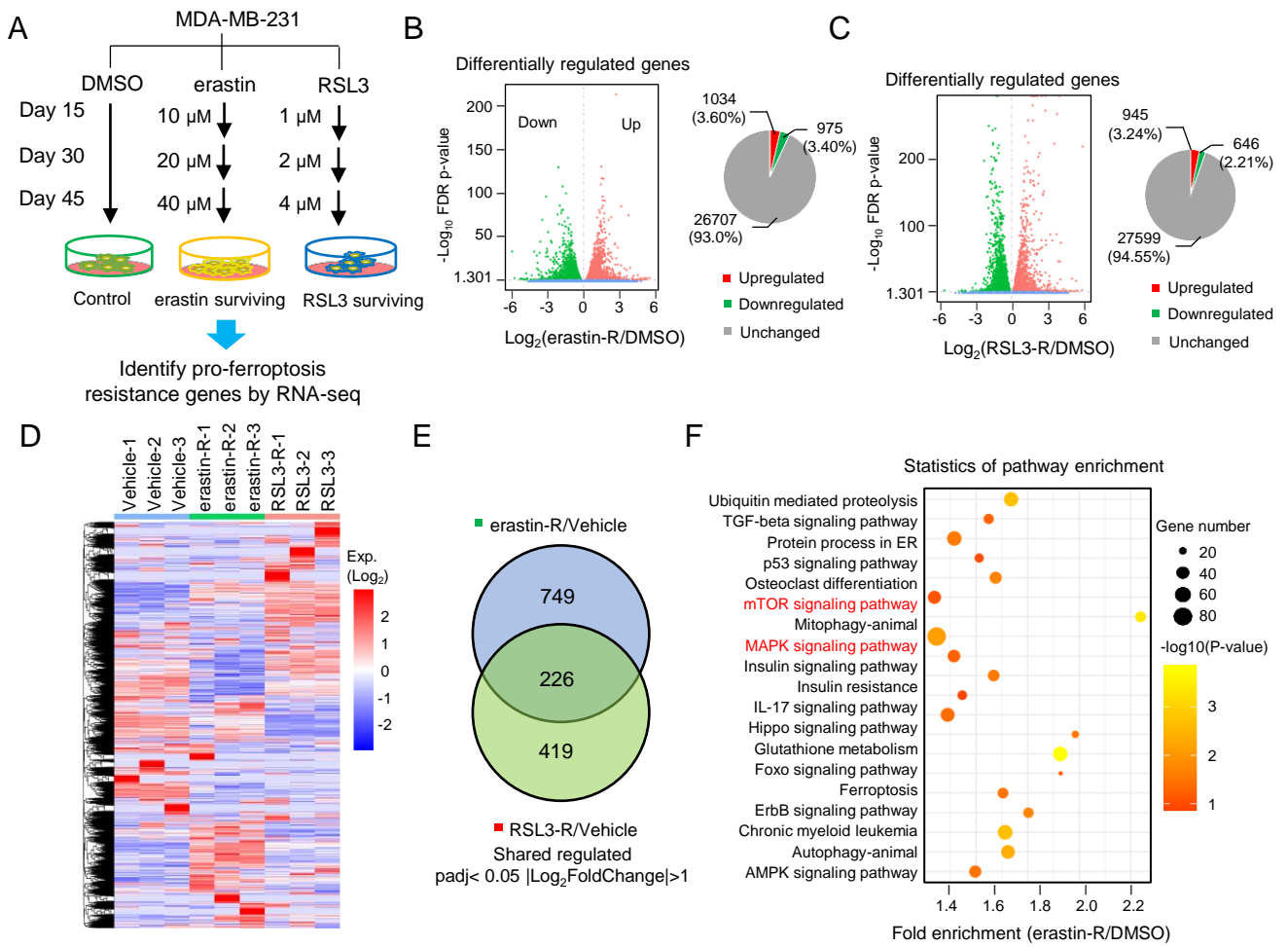
**B**



# Supplementary Figure 7

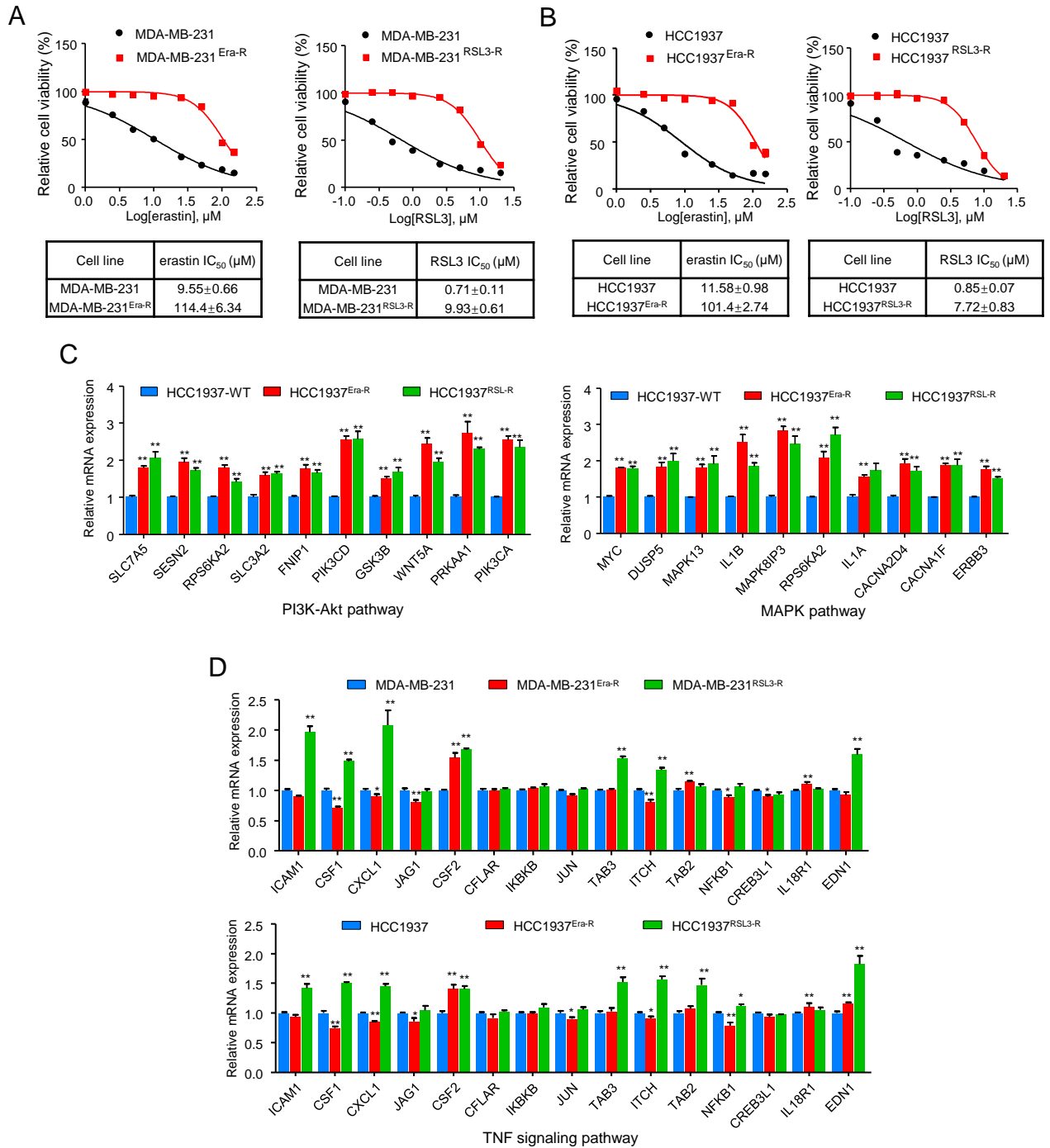


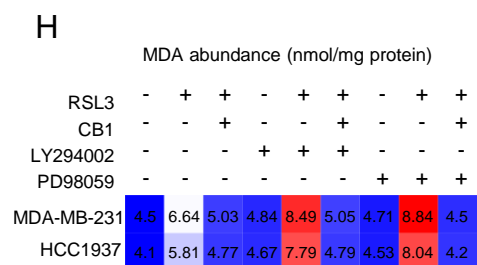
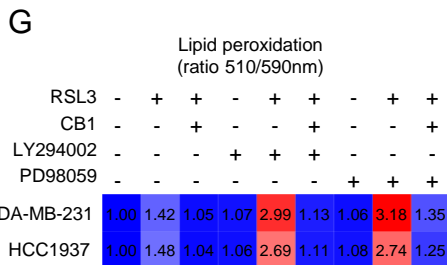
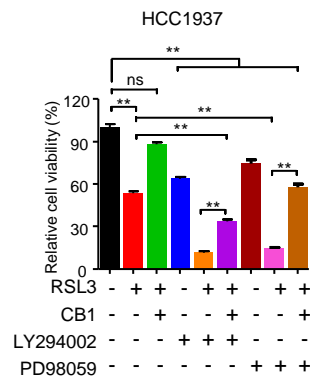
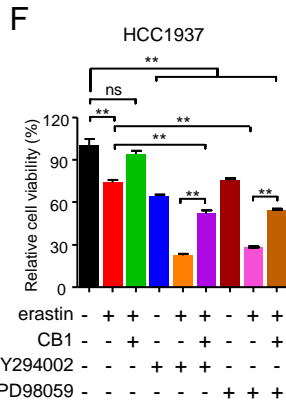
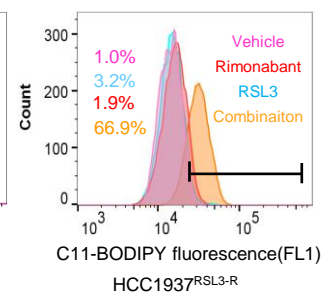
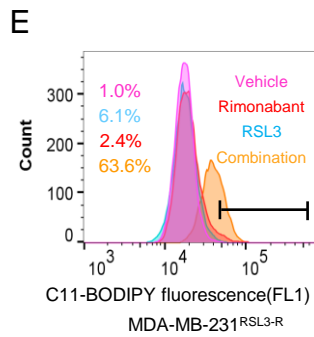
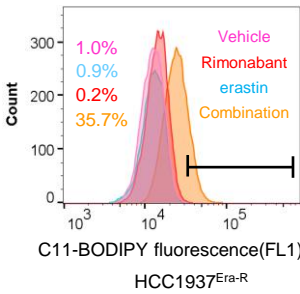
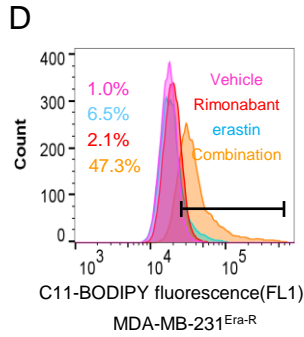
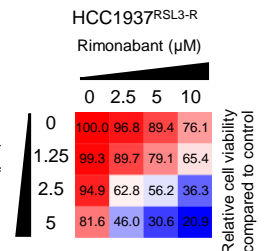
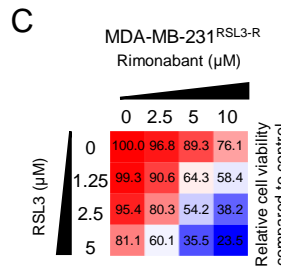
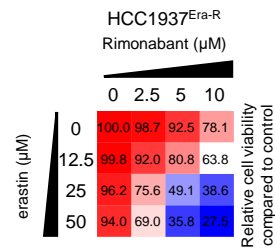
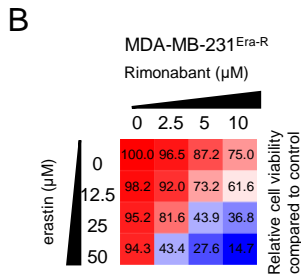
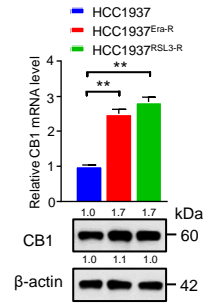
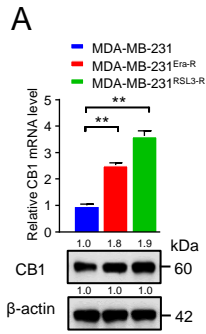
# Supplementary Figure 8





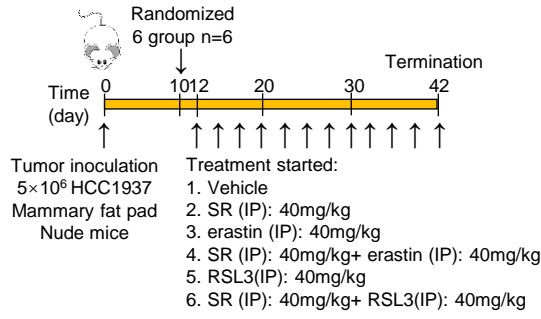
# Supplementary Figure 9



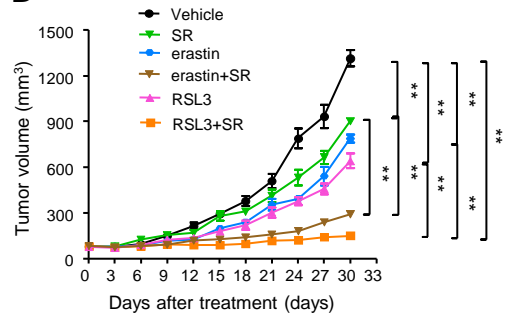


# Supplementary Figure 11

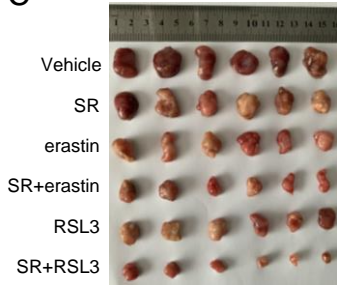
**A**



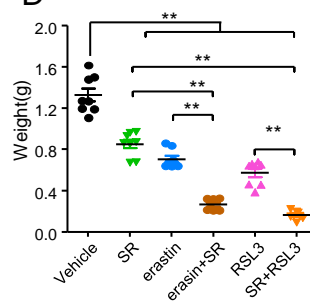
**B**



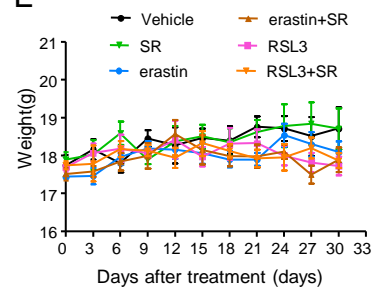
**C**



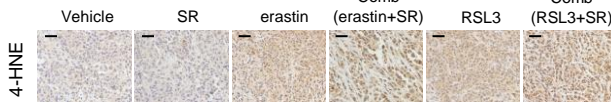
**D**



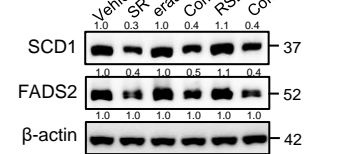
**E**



**F**



**G**



# Supplementary Figure 12

