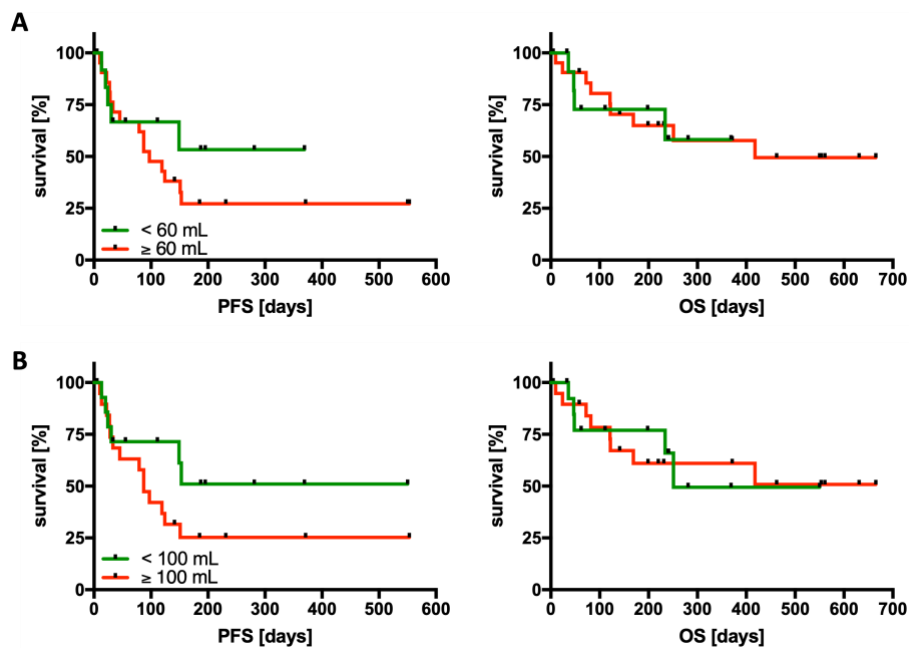


SUPPLEMENTARY MATERIAL

Supplementary Table 1: Correlation Analysis for RECIL, Lugano and Metabolic Tumor Burden.

TB Metric	Tumor proportion	Spearman ρ	95% CI	p-value
MTV vs. RECIL	Total	0.744	0.546 - 0.863	<0.001
	Nodal	0.763	0.577 - 0.874	
	Extranodal	0.660	0.419 - 0.814	
MTV vs. Lugano	Total	0.714	0.542 - 0.862	<0.001
	Nodal	0.852	0.725 - 0.923	
	Extranodal	0.749	0.554 - 0.866	
Lugano vs. RECIL	Total	0.983	0.967 - 0.992	<0.001
	Nodal	0.938	0.880 - 0.968	
	Extranodal	0.896	0.803 - 0.947	

Supplementary Figure 1: Different Dichotomization of Tumor Burden Metrics and Association with Progression-Free and Overall Survival.



Kaplan-Meier survival curves for TB_{MTV} using the two dichotomization cut-offs 60 mL (**A**) and 100 mL (**B**) comparing PFS (on the left) and OS (on the right). Curves for patients with a tumor burden smaller than the