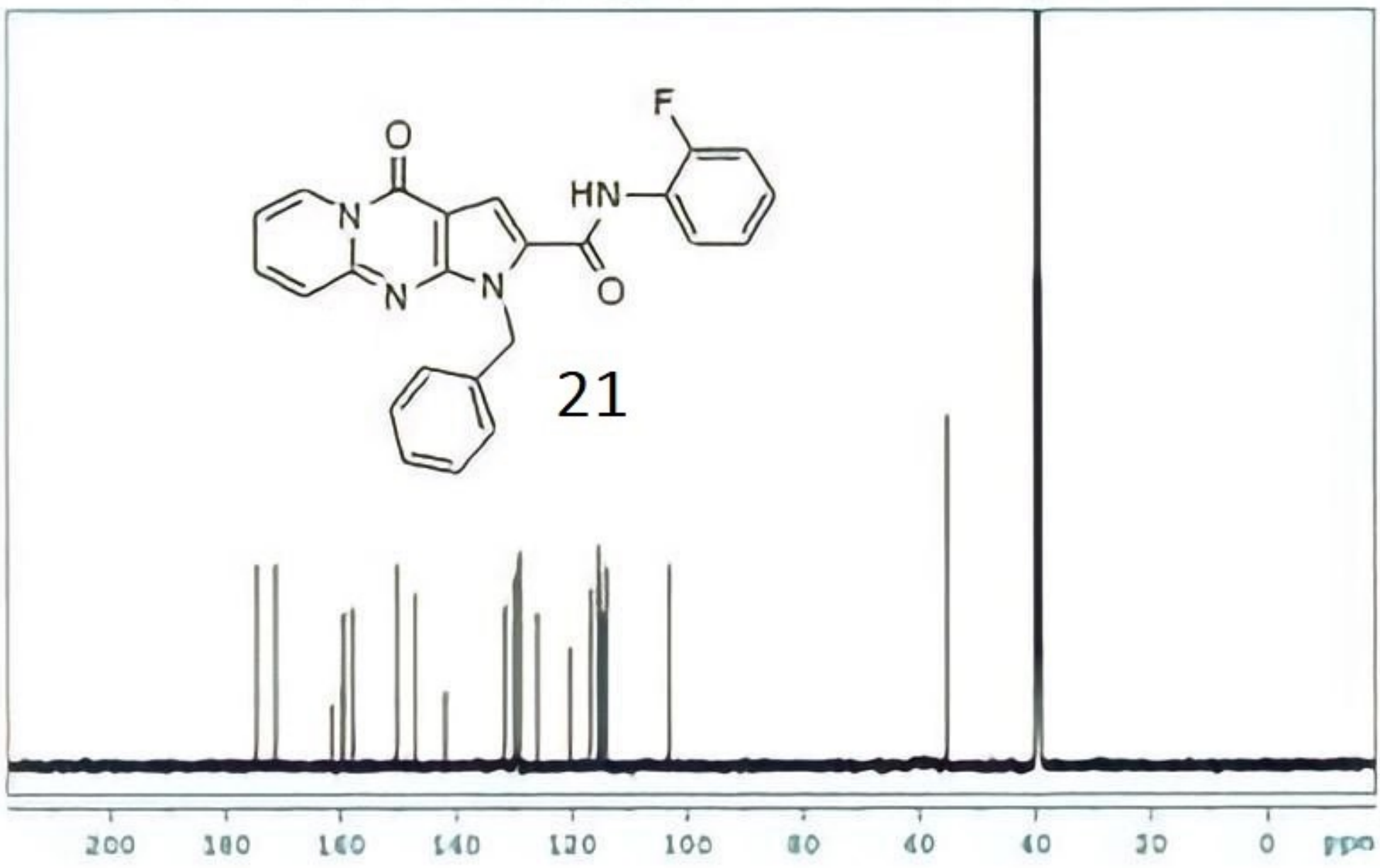


NOA 500 MHz Ultra Shield™



13C (0a)

148.72
145.72
141.77
139.70
138.62
131.88
127.31
117.84
111.84
109.07
107.16
129.04
128.97
128.28
128.11
118.84
118.43
118.31
114.07
107.16
32.11
30.10
29.02
28.84
28.66
28.61
28.51
28.41
28.31
28.21
28.11
28.01
27.91
27.81
27.71
27.61
27.51
27.41
27.31
27.21
27.11
27.01
26.91
26.81
26.71
26.61
26.51
26.41
26.31
26.21
26.11
26.01
25.91
25.81
25.71
25.61
25.51
25.41
25.31
25.21
25.11
25.01
24.91
24.81
24.71
24.61
24.51
24.41
24.31
24.21
24.11
24.01
23.91
23.81
23.71
23.61
23.51
23.41
23.31
23.21
23.11
23.01
22.91
22.81
22.71
22.61
22.51
22.41
22.31
22.21
22.11
22.01
21.91
21.81
21.71
21.61
21.51
21.41
21.31
21.21
21.11
21.01
20.91
20.81
20.71
20.61
20.51
20.41
20.31
20.21
20.11
20.01
19.91
19.81
19.71
19.61
19.51
19.41
19.31
19.21
19.11
19.01
18.91
18.81
18.71
18.61
18.51
18.41
18.31
18.21
18.11
18.01
17.91
17.81
17.71
17.61
17.51
17.41
17.31
17.21
17.11
17.01
16.91
16.81
16.71
16.61
16.51
16.41
16.31
16.21
16.11
16.01
15.91
15.81
15.71
15.61
15.51
15.41
15.31
15.21
15.11
15.01
14.91
14.81
14.71
14.61
14.51
14.41
14.31
14.21
14.11
14.01
13.91
13.81
13.71
13.61
13.51
13.41
13.31
13.21
13.11
13.01
12.91
12.81
12.71
12.61
12.51
12.41
12.31
12.21
12.11
12.01
11.91
11.81
11.71
11.61
11.51
11.41
11.31
11.21
11.11
11.01
10.91
10.81
10.71
10.61
10.51
10.41
10.31
10.21
10.11
10.01
9.91
9.81
9.71
9.61
9.51
9.41
9.31
9.21
9.11
9.01
8.91
8.81
8.71
8.61
8.51
8.41
8.31
8.21
8.11
8.01
7.91
7.81
7.71
7.61
7.51
7.41
7.31
7.21
7.11
7.01
6.91
6.81
6.71
6.61
6.51
6.41
6.31
6.21
6.11
6.01
5.91
5.81
5.71
5.61
5.51
5.41
5.31
5.21
5.11
5.01
4.91
4.81
4.71
4.61
4.51
4.41
4.31
4.21
4.11
4.01
3.91
3.81
3.71
3.61
3.51
3.41
3.31
3.21
3.11
3.01
2.91
2.81
2.71
2.61
2.51
2.41
2.31
2.21
2.11
2.01
1.91
1.81
1.71
1.61
1.51
1.41
1.31
1.21
1.11
1.01
0.91
0.81
0.71
0.61
0.51
0.41
0.31
0.21
0.11
0.01



Chemical Shift (ppm)	Assignment
148.72	C=O
145.72	C=C
141.77	C=C
139.70	C=C
138.62	C=C
131.88	C=C
127.31	C=C
117.84	C=C
111.84	C=C
109.07	C=C
107.16	C=C
32.11	CH ₂
30.10	CH ₂
29.02	CH ₂
28.84	CH ₂
28.66	CH ₂
28.61	CH ₂
28.51	CH ₂
28.41	CH ₂
28.31	CH ₂
28.21	CH ₂
28.11	CH ₂
28.01	CH ₂
27.91	CH ₂
27.81	CH ₂
27.71	CH ₂
27.61	CH ₂
27.51	CH ₂
27.41	CH ₂
27.31	CH ₂
27.21	CH ₂
27.11	CH ₂
27.01	CH ₂
26.91	CH ₂
26.81	CH ₂
26.71	CH ₂
26.61	CH ₂
26.51	CH ₂
26.41	CH ₂
26.31	CH ₂
26.21	CH ₂
26.11	CH ₂
26.01	CH ₂
25.91	CH ₂
25.81	CH ₂
25.71	CH ₂
25.61	CH ₂
25.51	CH ₂
25.41	CH ₂
25.31	CH ₂
25.21	CH ₂
25.11	CH ₂
25.01	CH ₂
24.91	CH ₂
24.81	CH ₂
24.71	CH ₂
24.61	CH ₂
24.51	CH ₂
24.41	CH ₂
24.31	CH ₂
24.21	CH ₂
24.11	CH ₂
24.01	CH ₂
23.91	CH ₂
23.81	CH ₂
23.71	CH ₂
23.61	CH ₂
23.51	CH ₂
23.41	CH ₂
23.31	CH ₂
23.21	CH ₂
23.11	CH ₂
23.01	CH ₂
22.91	CH ₂
22.81	CH ₂
22.71	CH ₂
22.61	CH ₂
22.51	CH ₂
22.41	CH ₂
22.31	CH ₂
22.21	CH ₂
22.11	CH ₂
22.01	CH ₂
21.91	CH ₂
21.81	CH ₂
21.71	CH ₂
21.61	CH ₂
21.51	CH ₂
21.41	CH ₂
21.31	CH ₂
21.21	CH ₂
21.11	CH ₂
21.01	CH ₂
20.91	CH ₂
20.81	CH ₂
20.71	CH ₂
20.61	CH ₂
20.51	CH ₂
20.41	CH ₂
20.31	CH ₂
20.21	CH ₂
20.11	CH ₂
20.01	CH ₂
19.91	CH ₂
19.81	CH ₂
19.71	CH ₂
19.61	CH ₂
19.51	CH ₂
19.41	CH ₂
19.31	CH ₂
19.21	CH ₂
19.11	CH ₂
19.01	CH ₂
18.91	CH ₂
18.81	CH ₂
18.71	CH ₂
18.61	CH ₂
18.51	CH ₂
18.41	CH ₂
18.31	CH ₂
18.21	CH ₂
18.11	CH ₂
18.01	CH ₂
17.91	CH ₂
17.81	CH ₂
17.71	CH ₂
17.61	CH ₂
17.51	CH ₂
17.41	CH ₂
17.31	CH ₂
17.21	CH ₂
17.11	CH ₂
17.01	CH ₂
16.91	CH ₂
16.81	CH ₂
16.71	CH ₂
16.61	CH ₂
16.51	CH ₂
16.41	CH ₂
16.31	CH ₂
16.21	CH ₂
16.11	CH ₂
16.01	CH ₂
15.91	CH ₂
15.81	CH ₂
15.71	CH ₂
15.61	CH ₂
15.51	CH ₂
15.41	CH ₂
15.31	CH ₂
15.21	CH ₂
15.11	CH ₂
15.01	CH ₂
14.91	CH ₂
14.81	CH ₂
14.71	CH ₂
14.61	CH ₂
14.51	CH ₂
14.41	CH ₂
14.31	CH ₂
14.21	CH ₂
14.11	CH ₂
14.01	CH ₂
13.91	CH ₂
13.81	CH ₂
13.71	CH ₂
13.61	CH ₂
13.51	CH ₂
13.41	CH ₂
13.31	CH ₂
13.21	CH ₂
13.11	CH ₂
13.01	CH ₂
12.91	CH ₂
12.81	CH ₂
12.71	CH ₂
12.61	CH ₂
12.51	CH ₂
12.41	CH ₂
12.31	CH ₂
12.21	CH ₂
12.11	CH ₂
12.01	CH ₂
11.91	CH ₂
11.81	CH ₂
11.71	CH ₂
11.61	CH ₂
11.51	CH ₂
11.41	CH ₂
11.31	CH ₂
11.21	CH ₂
11.11	CH ₂
11.01	CH ₂
10.91	CH ₂
10.81	CH ₂
10.71	CH ₂
10.61	CH ₂
10.51	CH ₂
10.41	CH ₂
10.31	CH ₂
10.21	CH ₂
10.11	CH ₂
10.01	CH ₂
9.91	CH ₂
9.81	CH ₂
9.71	CH ₂
9.61	CH ₂
9.51	CH ₂
9.41	CH ₂
9.31	CH ₂
9.21	CH ₂
9.11	CH ₂
9.01	CH ₂
8.91	CH ₂
8.81	CH ₂
8.71	CH ₂
8.61	CH ₂
8.51	CH ₂
8.41	CH ₂
8.31	CH ₂
8.21	CH ₂
8.11	CH ₂
8.01	CH ₂
7.91	CH ₂
7.81	CH ₂
7.71	CH ₂
7.61	CH ₂
7.51	CH ₂
7.41	CH ₂
7.31	CH ₂
7.21	CH ₂
7.11	CH ₂
7.01	CH ₂
6.91	CH ₂
6.81	CH ₂
6.71	CH ₂
6.61	CH ₂
6.51	CH ₂
6.41	CH ₂
6.31	CH ₂
6.21	CH ₂
6.11	CH ₂
6.01	CH ₂
5.91	CH ₂
5.81	CH ₂
5.71	CH ₂
5.61	CH ₂
5.51	CH ₂
5.41	CH ₂
5.31	CH ₂
5.21	CH ₂
5.11	CH ₂
5.01	CH ₂
4.91	CH ₂
4.81	CH ₂
4.71	CH ₂
4.61	CH ₂
4.51	CH ₂
4.41	CH ₂
4.31	CH ₂
4.21	CH ₂
4.11	CH ₂
4.01	CH ₂
3.91	CH ₂
3.81	CH ₂
3.71	CH ₂
3.61	CH ₂
3.51	CH ₂
3.41	CH ₂
3.31	CH ₂
3.21	CH ₂
3.11	CH ₂
3.01	CH ₂
2.91	CH ₂
2.81	CH ₂
2.71	CH ₂
2.61	CH ₂
2.51	CH ₂
2.41	CH ₂
2.31	CH ₂
2.21	CH ₂
2.11	CH ₂
2.01	CH ₂
1.91	CH ₂
1.81	CH ₂
1.71	CH ₂
1.61	CH ₂
1.51	CH ₂
1.41	CH ₂
1.31	CH ₂
1.21	CH ₂
1.11	CH ₂
1.01	CH ₂
0.91	CH ₂
0.81	CH ₂
0.71	CH ₂
0.61	CH ₂
0.51	CH ₂
0.41	CH ₂
0.31	CH ₂
0.21	CH ₂
0.11	CH ₂
0.01	CH ₂