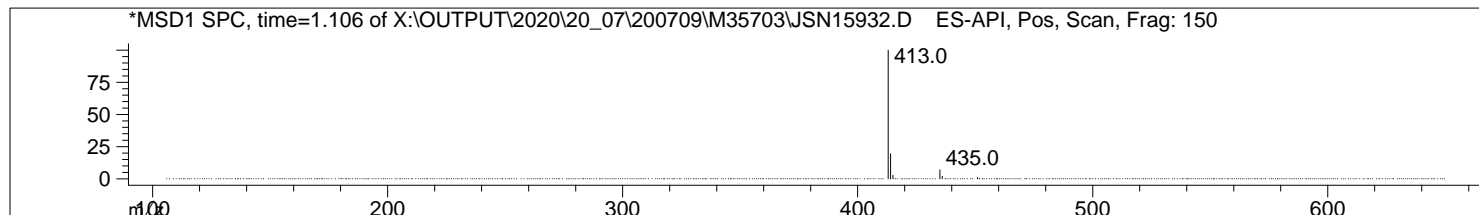
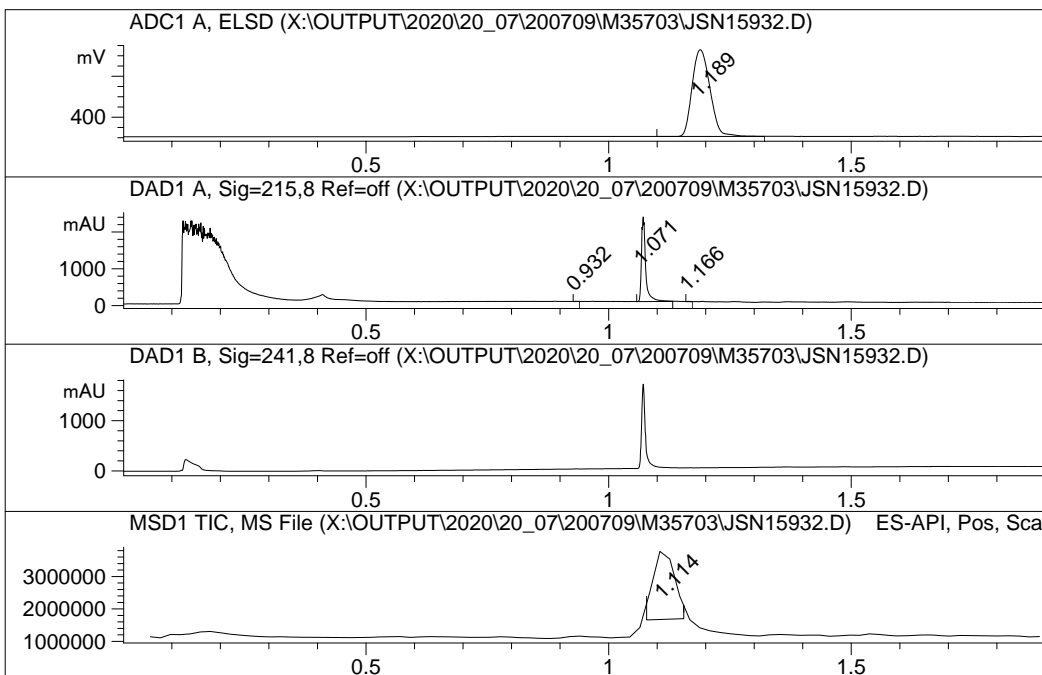
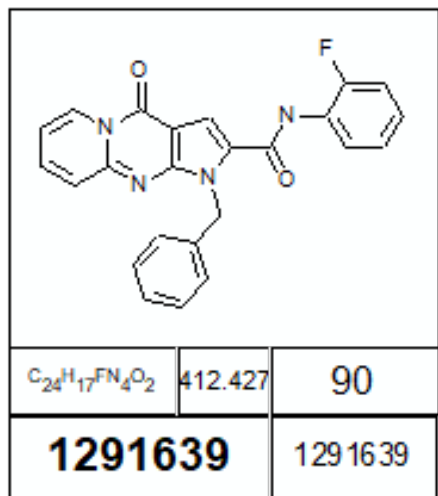


4a

Agilent 1100 LC/MSD  
 Diodearray G1315B (DAD1A-215nm; DAD1B-240nm)  
 Mass Quad G1956B (MSD1-Pos, MSD2-Neg)  
 ELSD Altech 3300 (ADC1 A, ELSD)

Mobile Phase:A-H<sub>2</sub>O+0.1HCOOH;B-MeCN+0.1HCOOH  
 Separation column:  
 Rapid Resolutionn HT Cartige 4.6x30mm,  
 1.8-Micron, Zorbax SB-C18

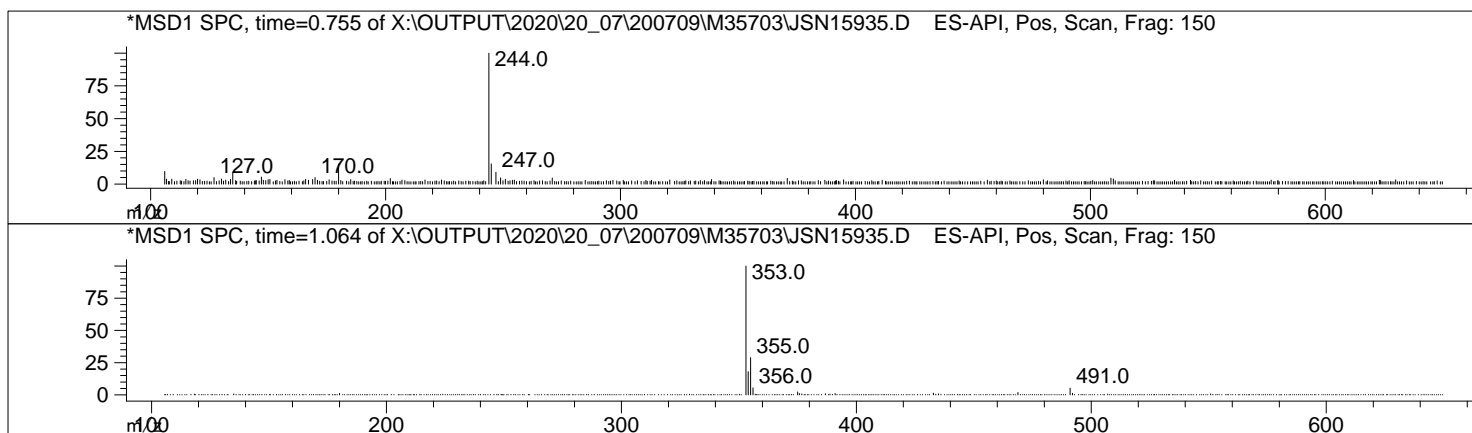
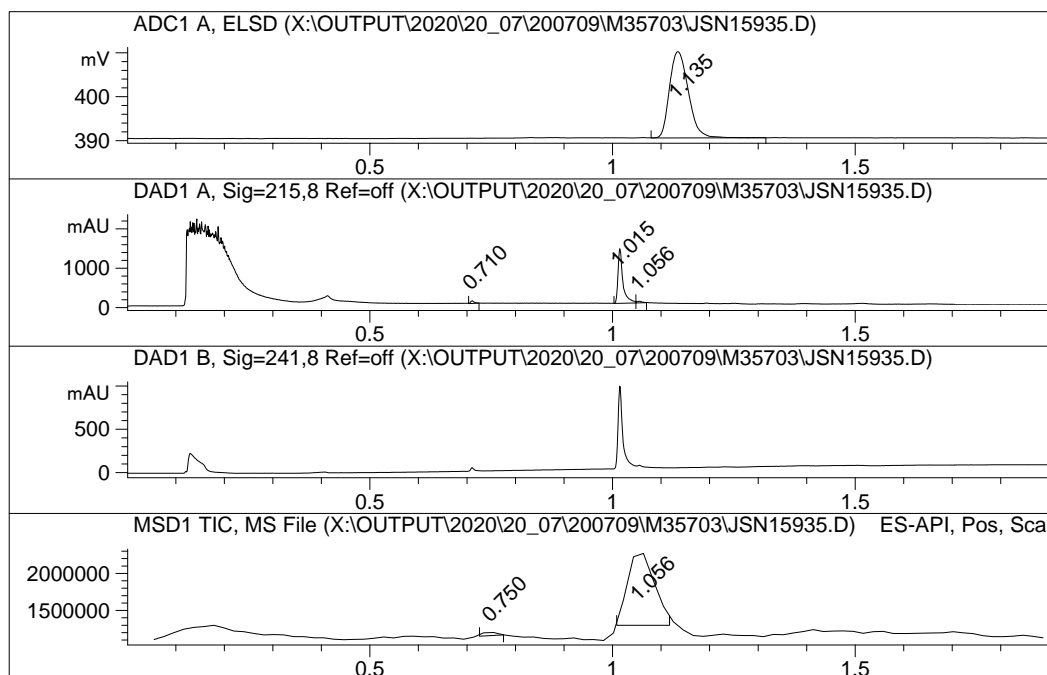
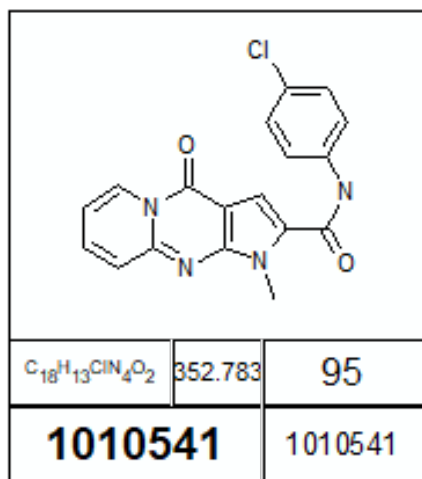


#	Signal	R.Time	Area %
1	ADC1 A, ELSD	1.189	100.000
#	Signal	R.Time	Area %
1	DAD1 A, Sig=215,8 Ref=off	0.932	0.211
2		1.071	99.443
3		1.166	0.346
#	Signal	R.Time	Area %
#	Signal	R.Time	Area %
1	MSD1 TIC, MS File	1.114	100.000

4b

Agilent 1100 LC/MSD  
 Diodearray G1315B (DAD1A-215nm; DAD1B-240nm)  
 Mass Quad G1956B (MSD1-Pos, MSD2-Neg)  
 ELSD Altech 3300 (ADC1 A, ELSD)

Mobile Phase:A-H<sub>2</sub>O+0.1HCOOH;B-MeCN+0.1HCOOH  
 Separation column:  
 Rapid Resolutionn HT Cartige 4.6x30mm,  
 1.8-Micron, Zorbax SB-C18



#	Signal	R.Time	Area %
1	ADC1 A, ELSD	1.135	100.000

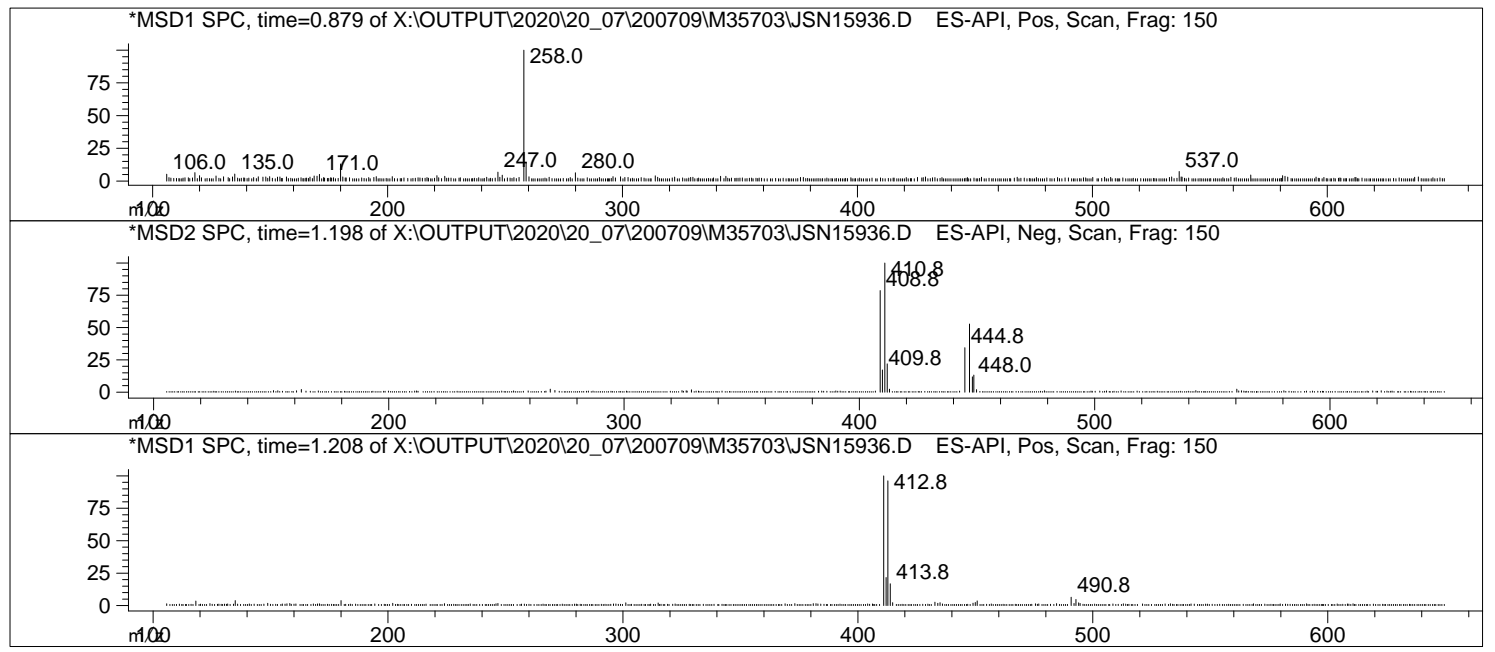
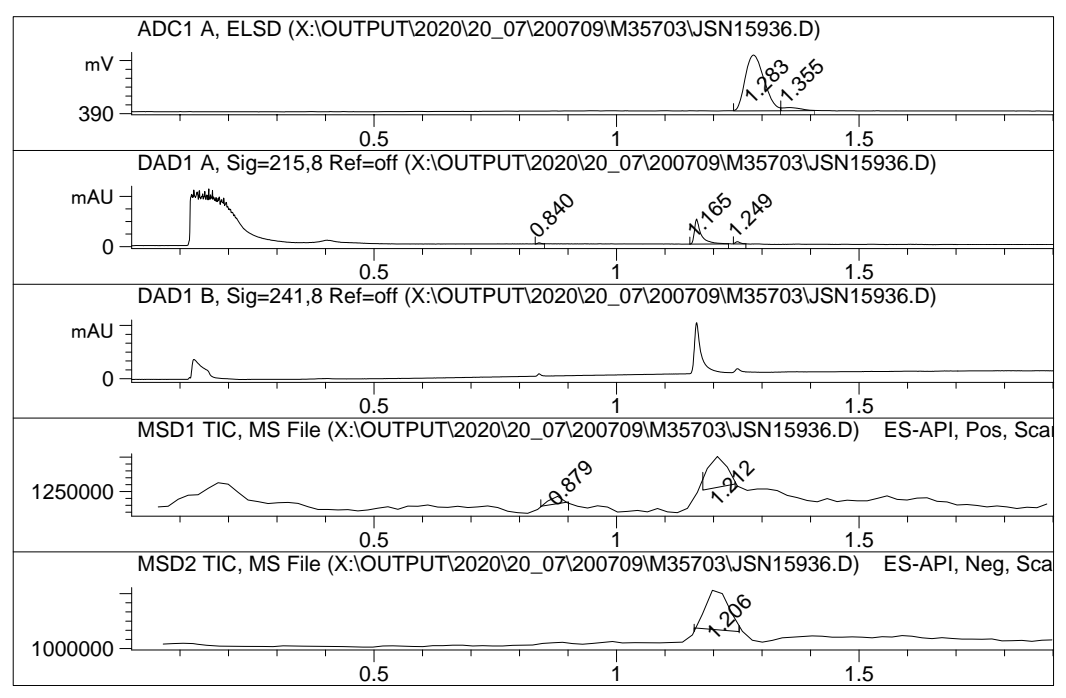
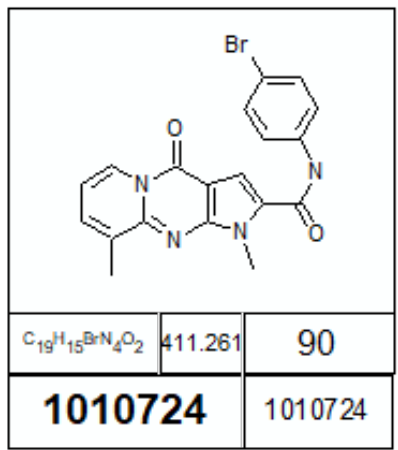
#	Signal	R.Time	Area %
1	DAD1 A, Sig=215,8 Ref=off	0.710	3.154
2		1.015	93.750
3		1.056	3.096

#	Signal	R.Time	Area %
1	MSD1 TIC, MS File	0.750	1.834
2		1.056	98.166

4c

Agilent 1100 LC/MSD  
 Diodearray G1315B (DAD1A-215nm; DAD1B-240nm)  
 Mass Quad G1956B (MSD1-Pos, MSD2-Neg)  
 ELSD Altech 3300 (ADC1 A, ELSD)

Mobile Phase:A-H2O+0.1HCOOH;B-MeCN+0.1HCOOH  
 Separation column:  
 Rapid Resolutionn HT Cartige 4.6x30mm,  
 1.8-Micron, Zorbax SB-C18



#	Signal	R.Time	Area %
1	ADC1 A, ELSD	1.283	94.897
2		1.355	5.103
-----			
#	Signal	R.Time	Area %
1	DAD1 A, Sig=215,8 Ref=off	0.840	2.322
2		1.165	92.006
3		1.249	5.671
-----			
#	Signal	R.Time	Area %

#	Signal	R.Time	Area %
1	MSD1 TIC, MS File	0.879	13.288
2		1.212	86.712

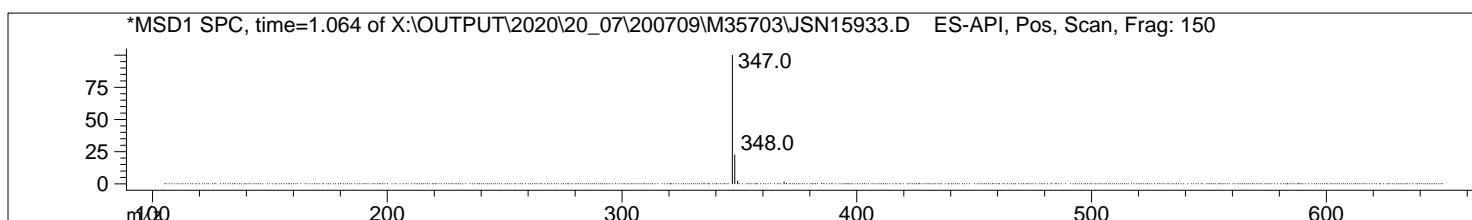
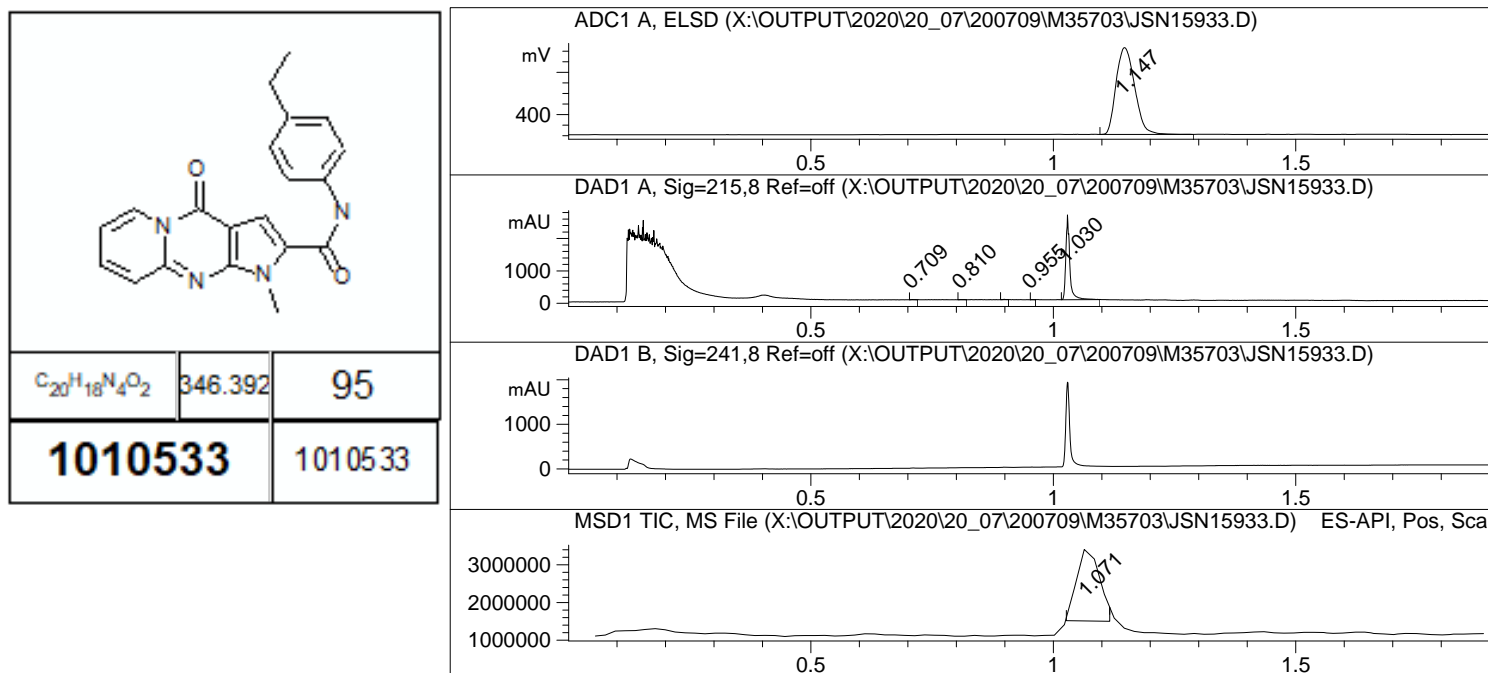
  

#	Signal	R.Time	Area %
1	MSD2 TIC, MS File	1.206	100.000

4d

Agilent 1100 LC/MSD  
 Diodearray G1315B (DAD1A-215nm; DAD1B-240nm)  
 Mass Quad G1956B (MSD1-Pos, MSD2-Neg)  
 ELSD Altech 3300 (ADC1 A, ELSD)

Mobile Phase:A-H<sub>2</sub>O+0.1HCOOH;B-MeCN+0.1HCOOH  
 Separation column:  
 Rapid Resolutionn HT Cartige 4.6x30mm,  
 1.8-Micron, Zorbax SB-C18



#	Signal	R.Time	Area %
1	ADC1 A, ELSD	1.147	100.000
#	Signal	R.Time	Area %
1	DAD1 A, Sig=215,8 Ref=off	0.709	0.341
2		0.810	0.169
3		0.899	0.269
4		0.955	0.163
5		1.030	99.059
#	Signal	R.Time	Area %
1	MSD1 TIC, MS File	1.071	100.000

4e

Mobile phase:A-H<sub>2</sub>O+0.1%HCOOH;B-MeCN+0.1%HCOOH

System: Agilent 1100 LC/MSD SL

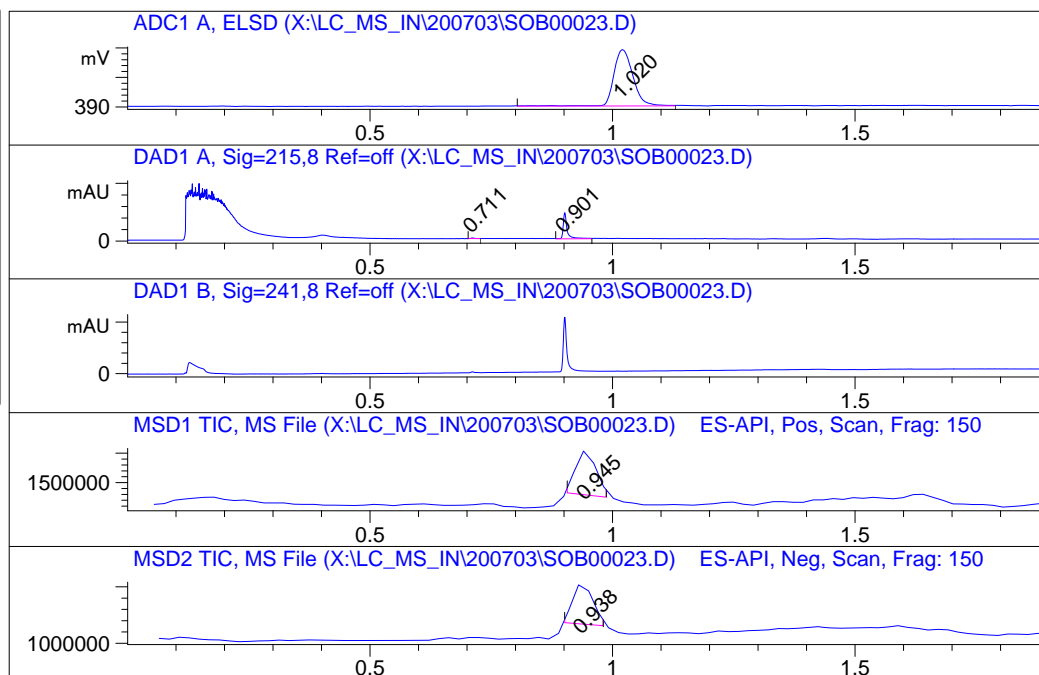
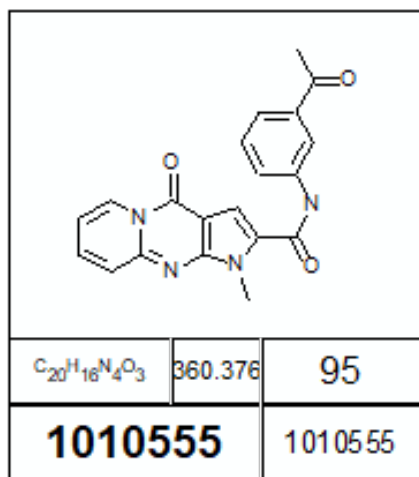
Separation column:

Detector: Diodearray G1315B (DAD1)

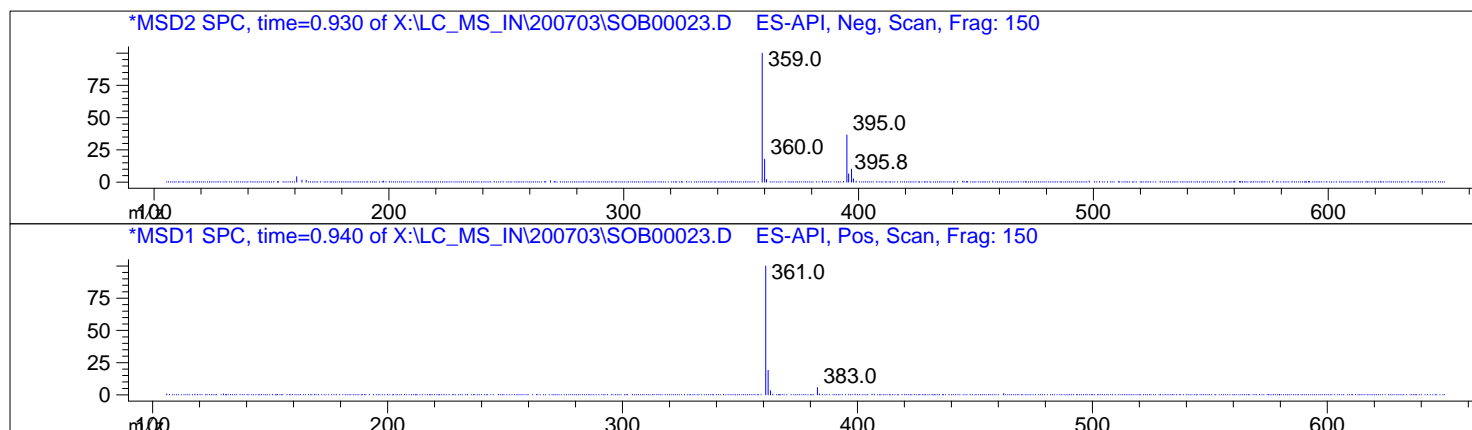
Rapid Resolutionn HT Cartige 4.6x30mm,

MassQuad G1956B (MSD1-Pos, MSD2-Neg)

1.8-Micron, Zorbax SB C-18



Block:

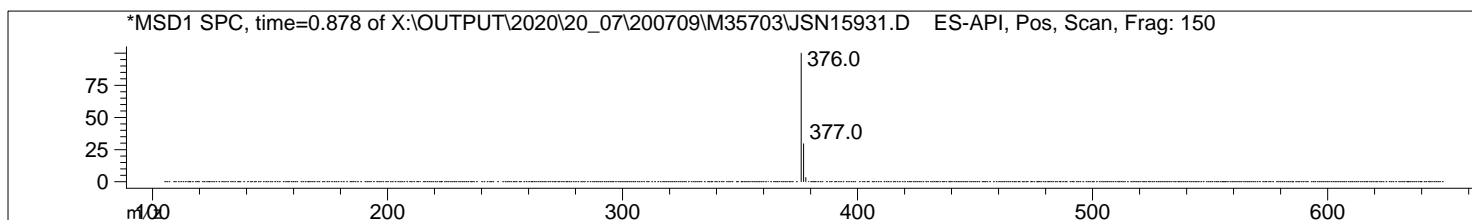
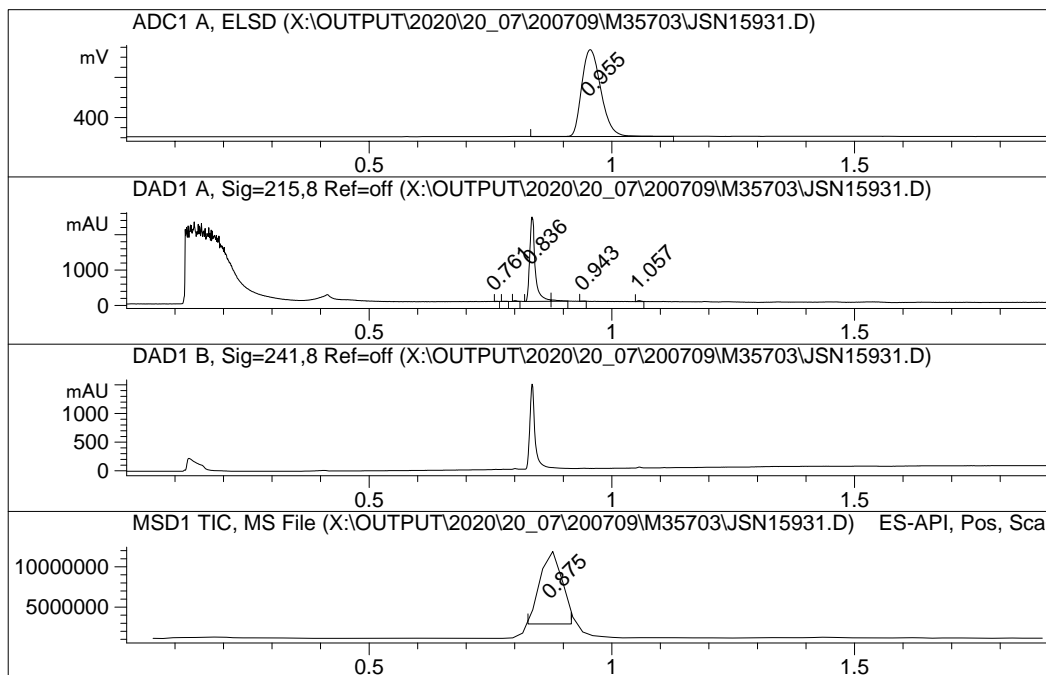
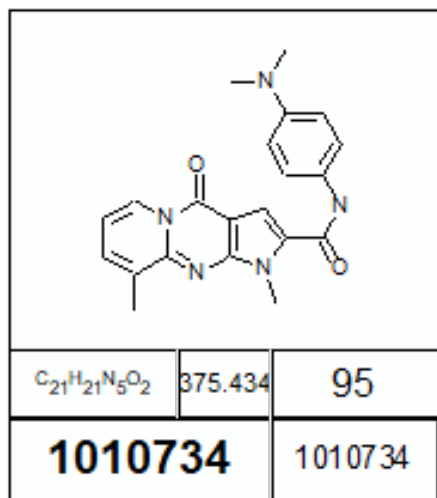


#	Signal	R.Time	Area %
1	ADC1 A, ELSD	1.020	100.000
#	Signal	R.Time	Area %
1	DAD1 A, Sig=215,8 Ref=off	0.711	2.270
2		0.901	97.730
#	Signal	R.Time	Area %
1	MSD1 TIC, MS File	0.945	100.000
#	Signal	R.Time	Area %
1	MSD2 TIC, MS File	0.938	100.000

4f

Agilent 1100 LC/MSD  
 Diodearray G1315B (DAD1A-215nm; DAD1B-240nm)  
 Mass Quad G1956B (MSD1-Pos, MSD2-Neg)  
 ELSD Altech 3300 (ADC1 A, ELSD)

Mobile Phase:A-H<sub>2</sub>O+0.1HCOOH;B-MeCN+0.1HCOOH  
 Separation column:  
 Rapid Resolutionn HT Cartige 4.6x30mm,  
 1.8-Micron, Zorbax SB-C18



#	Signal	R.Time	Area %
1	ADC1 A, ELSD	0.955	100.000

#	Signal	R.Time	Area %
1	DAD1 A, Sig=215,8 Ref=off	0.761	0.148
2		0.777	0.145
3		0.801	0.578
4		0.836	96.377
5		0.875	1.732
6		0.943	0.235
7		1.057	0.785

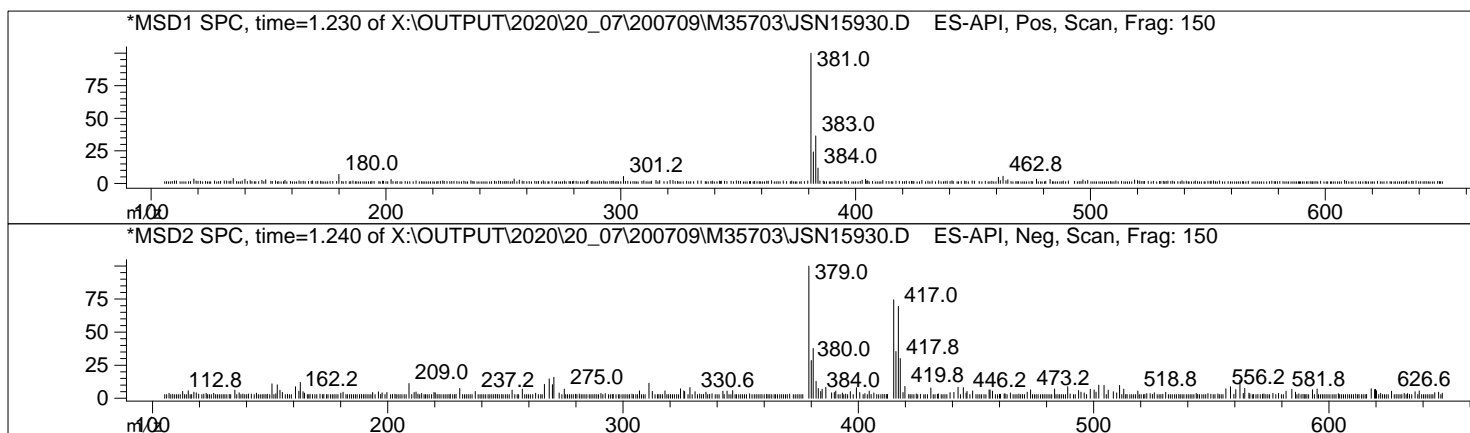
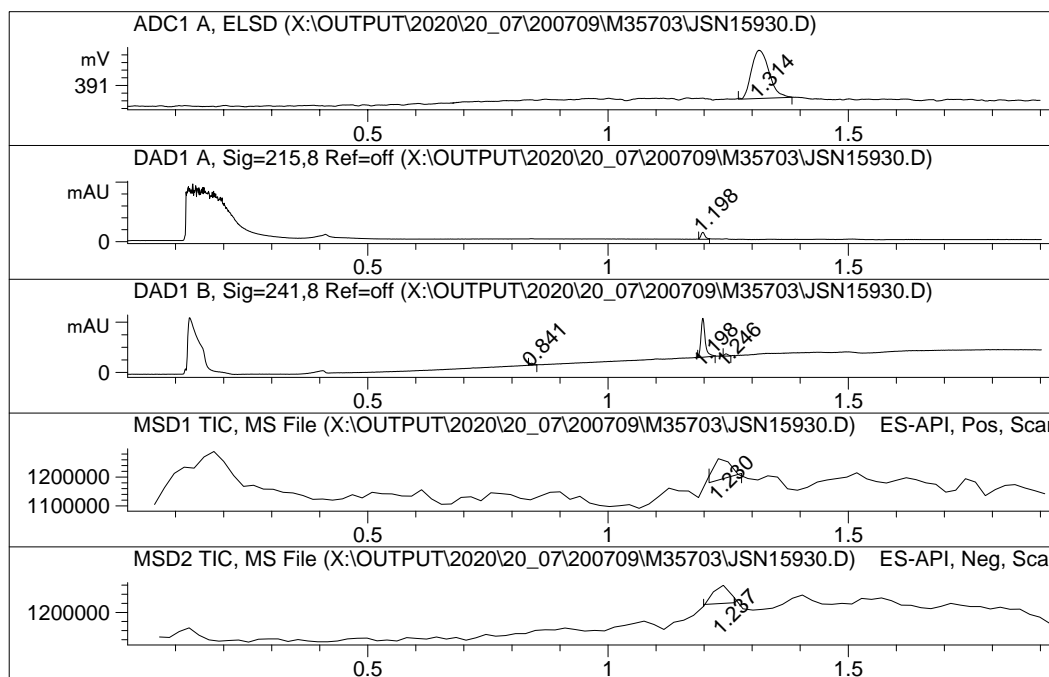
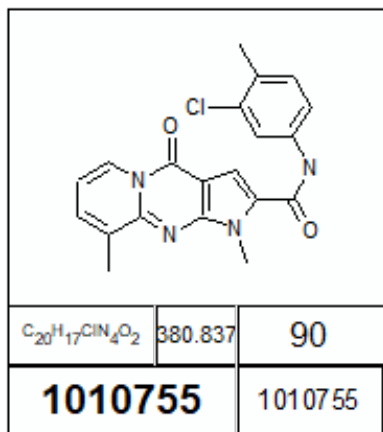
  

#	Signal	R.Time	Area %
1	MSD1 TIC, MS File	0.875	100.000

4g

Agilent 1100 LC/MSD  
 Diodearray G1315B (DAD1A-215nm; DAD1B-240nm)  
 Mass Quad G1956B (MSD1-Pos, MSD2-Neg)  
 ELSD Altech 3300 (ADC1 A, ELSD)

Mobile Phase:A-H<sub>2</sub>O+0.1HCOOH;B-MeCN+0.1HCOOH  
 Separation column:  
 Rapid Resolutionn HT Cartige 4.6x30mm,  
 1.8-Micron, Zorbax SB-C18



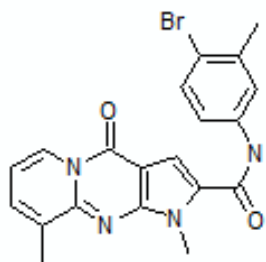
#	Signal	R.Time	Area %
1	ADC1 A, ELSD	1.314	100.000
#	Signal	R.Time	Area %
1	DAD1 A, Sig=215,8 Ref=off	1.198	100.000
#	Signal	R.Time	Area %
1	DAD1 B, Sig=241,8 Ref=off	0.841	3.938
2		1.198	91.278
3		1.246	4.783
#	Signal	R.Time	Area %
1	MSD1 TIC, MS File	1.230	100.000
#	Signal	R.Time	Area %
1	MSD2 TIC, MS File	1.237	100.000



4h

Agilent 1100 LC/MSD  
 Diodearray G1315B (DAD1A-215nm; DAD1B-240nm)  
 Mass Quad G1956B (MSD1-Pos, MSD2-Neg)  
 ELSD Altech 3300 (ADC1 A, ELSD)

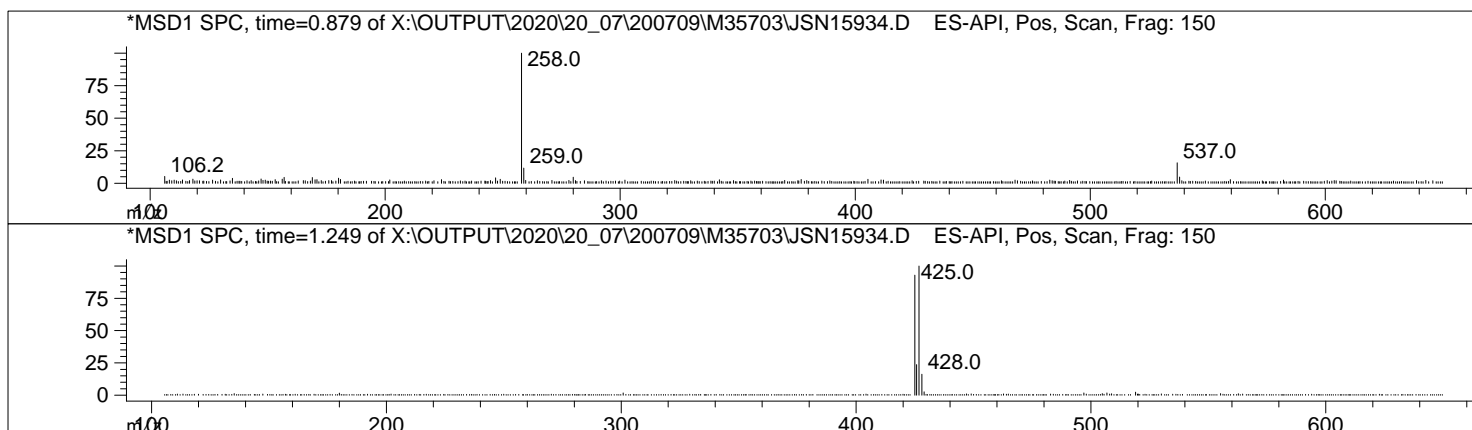
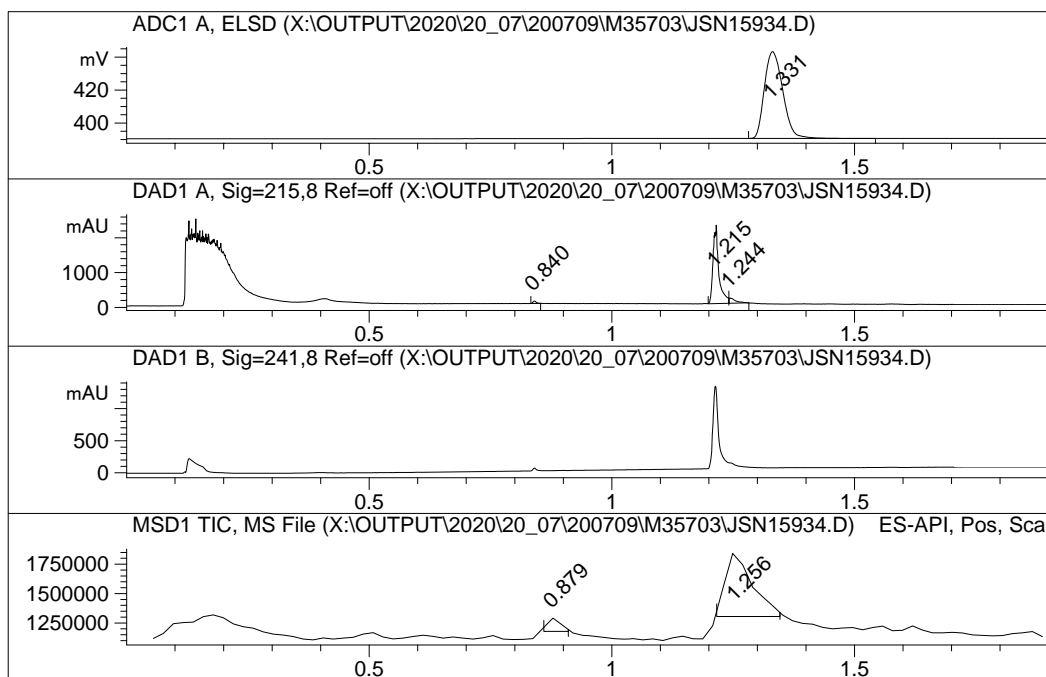
Mobile Phase:A-H<sub>2</sub>O+0.1HCOOH;B-MeCN+0.1HCOOH  
 Separation column:  
 Rapid Resolutionn HT Cartige 4.6x30mm,  
 1.8-Micron, Zorbax SB-C18



C<sub>20</sub>H<sub>17</sub>BrN<sub>4</sub>O<sub>2</sub> 425.288 90

1010760

1010760



#	Signal	R.Time	Area %
1	ADC1 A, ELSD	1.331	100.000

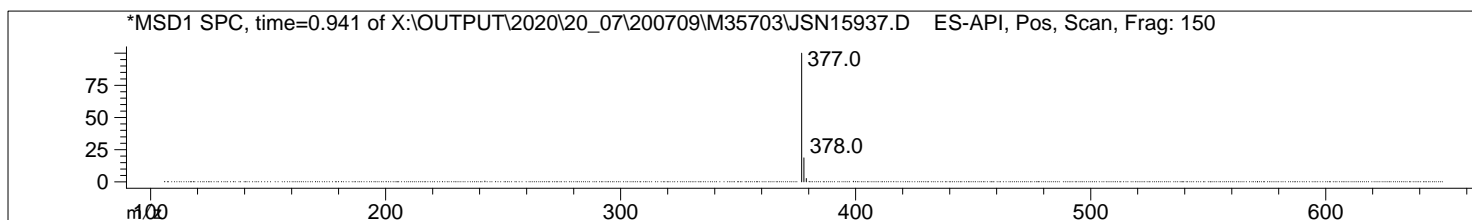
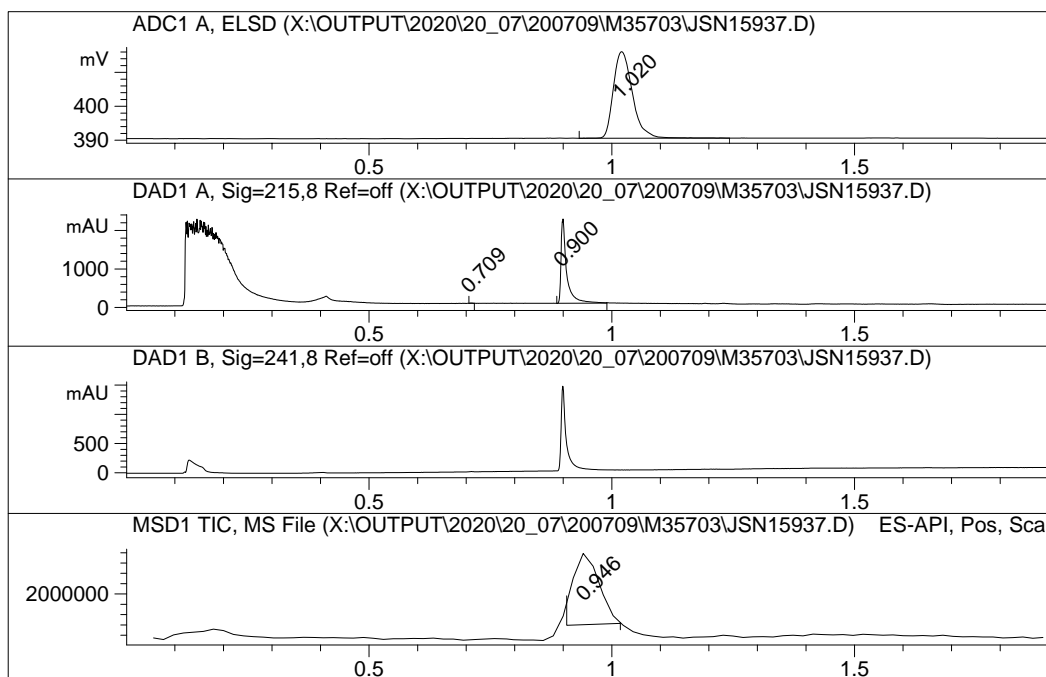
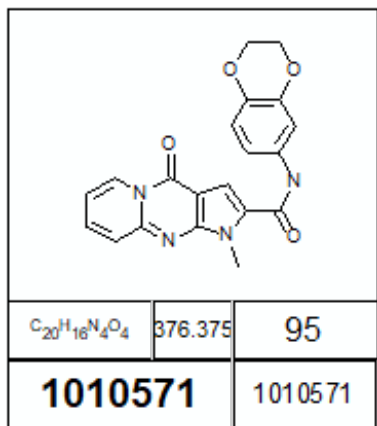
#	Signal	R.Time	Area %
1	DAD1 A, Sig=215,8 Ref=off	0.840	1.660
2		1.215	91.534
3		1.244	6.807

#	Signal	R.Time	Area %
1	MSD1 TIC, MS File	0.879	7.049
2		1.256	92.951

4i

Agilent 1100 LC/MSD  
 Diodearray G1315B (DAD1A-215nm; DAD1B-240nm)  
 Mass Quad G1956B (MSD1-Pos, MSD2-Neg)  
 ELSD Altech 3300 (ADC1 A, ELSD)

Mobile Phase:A-H<sub>2</sub>O+0.1HCOOH;B-MeCN+0.1HCOOH  
 Separation column:  
 Rapid Resolutionn HT Cartige 4.6x30mm,  
 1.8-Micron, Zorbax SB-C18



#	Signal	R.Time	Area %
1	ADC1 A, ELSD	1.020	100.000
#	Signal	R.Time	Area %
1	DAD1 A, Sig=215,8 Ref=off	0.709	0.169
2		0.900	99.831
#	Signal	R.Time	Area %
#	Signal	R.Time	Area %
1	MSD1 TIC, MS File	0.946	100.000