

In the next slide, two images of the same gel are provided:

- Image 1 has been acquired under the chemiluminescent channel (for HRP and AP chemiluminescent substrate), used for band quantification and representation of the abundance of the selected proteins;
- Image 2 has been acquired in the visible channel (excitation at 685 for protein detection), that allows to appreciate molecular weights (first line)

pmTOR (MW 289 kDa)

SDS gel 7,5% - loaded 20 µg protein/sample

Image 1

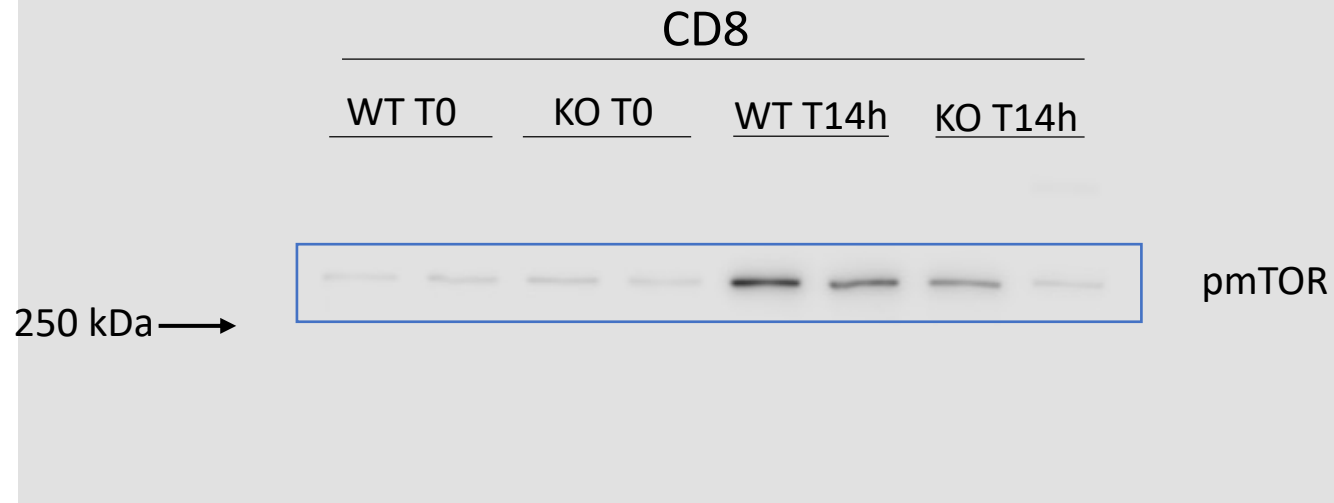
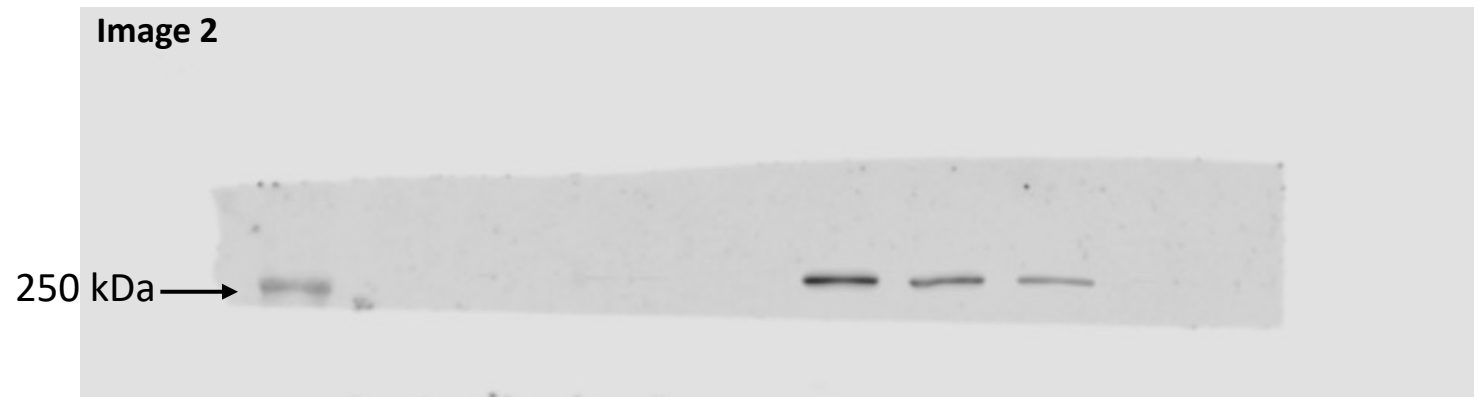


Image 2

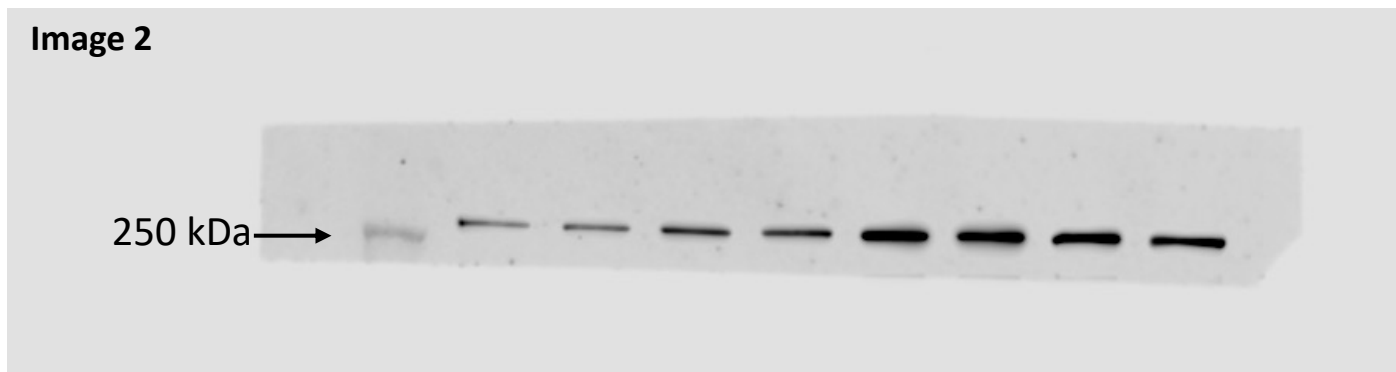
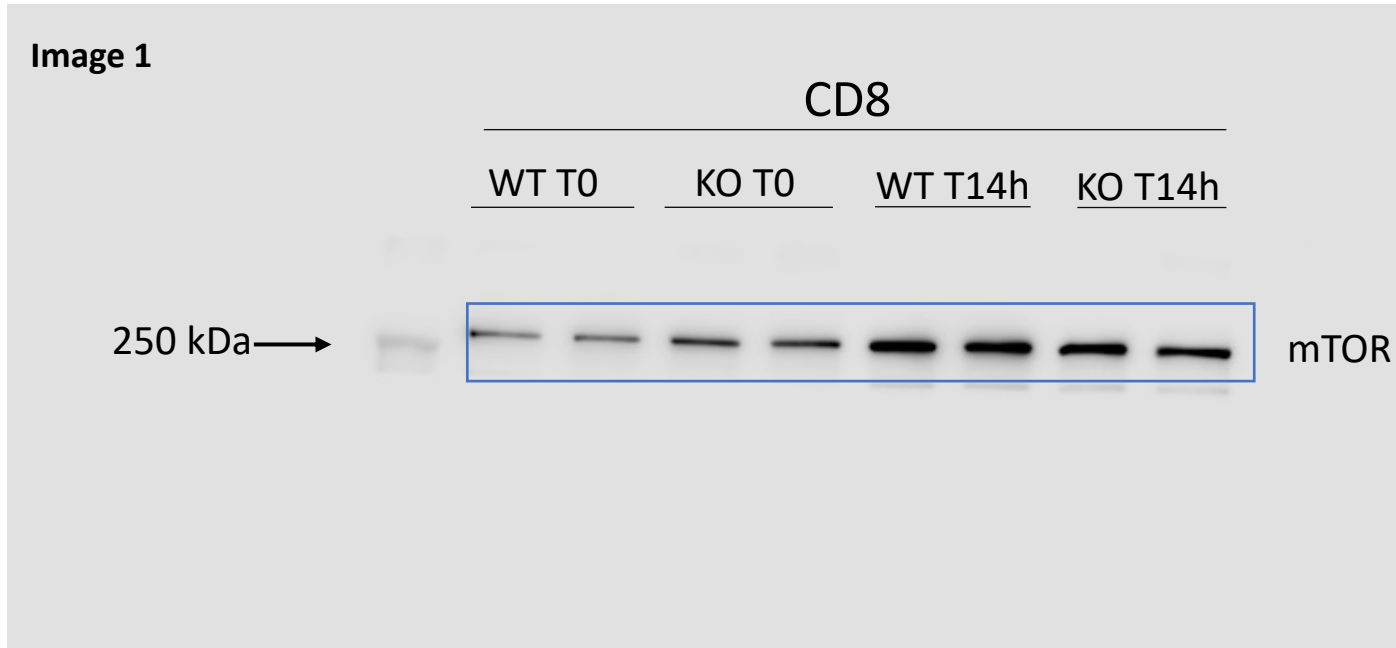


In the next slide, two images of the same gel are provided:

- Image 1 has been acquired under the chemiluminescent channel (for HRP and AP chemiluminescent substrate), used for band quantification and representation of the abundance of the selected proteins;
- Image 2 has been acquired in the visible channel (excitation at 685 for protein detection), that allows to appreciate molecular weights (first line)

mTOR (MW 289 kDa)

SDS gel 7,5% - loaded 20 µg protein/sample

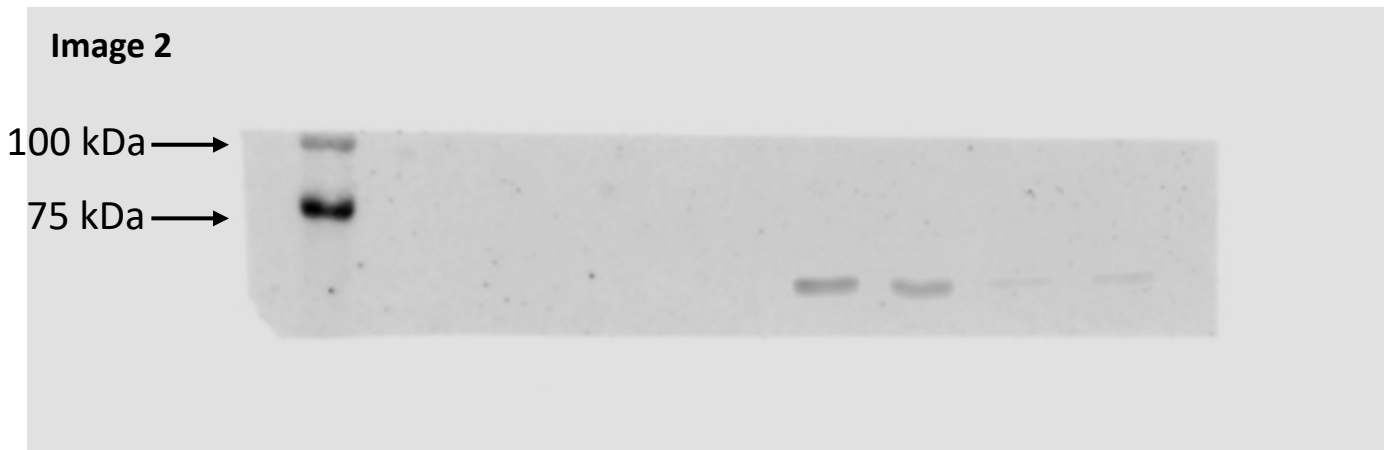
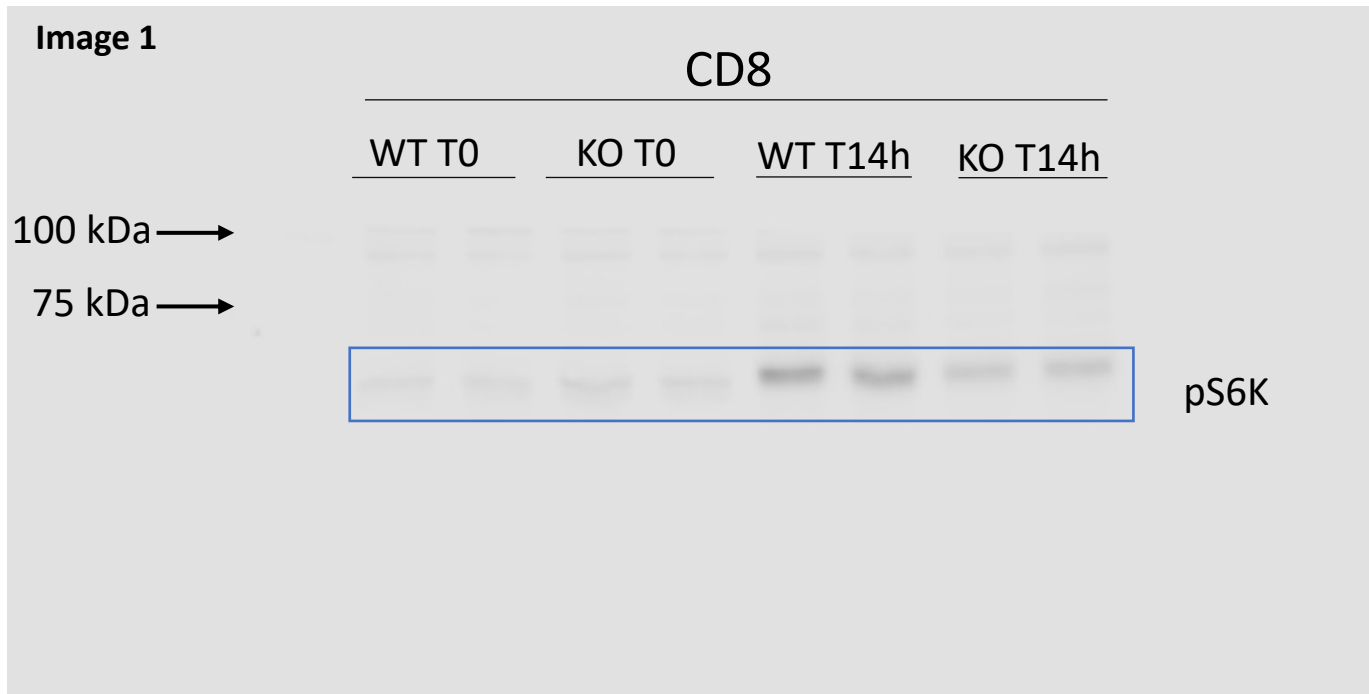


In the next slide, two images of the same gel are provided:

- Image 1 has been acquired under the chemiluminescent channel (for HRP and AP chemiluminescent substrate), used for band quantification and representation of the abundance of the selected proteins;
- Image 2 has been acquired in the visible channel (excitation at 685 for protein detection), that allows to appreciate molecular weights (first line)

pS6K (MW 70-85 kDa)

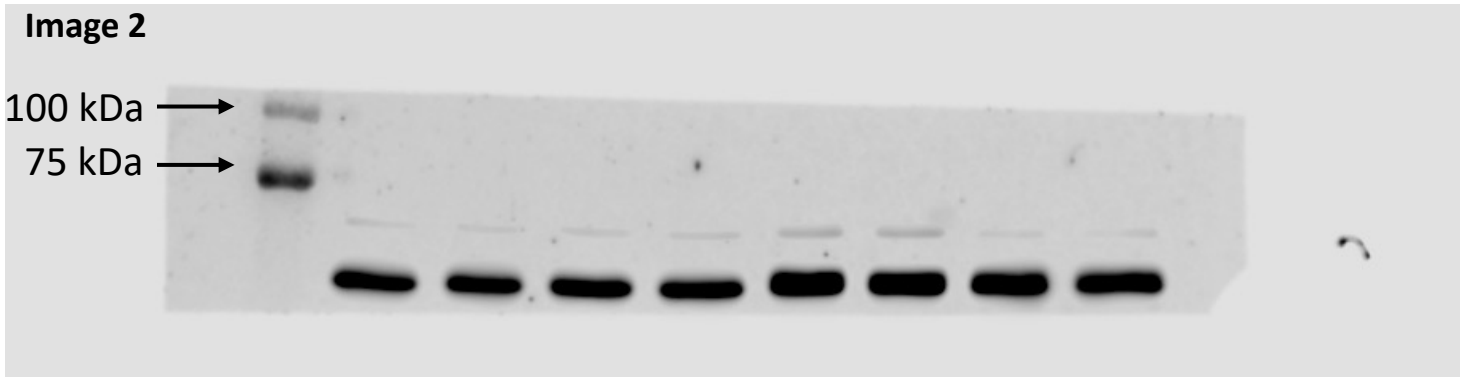
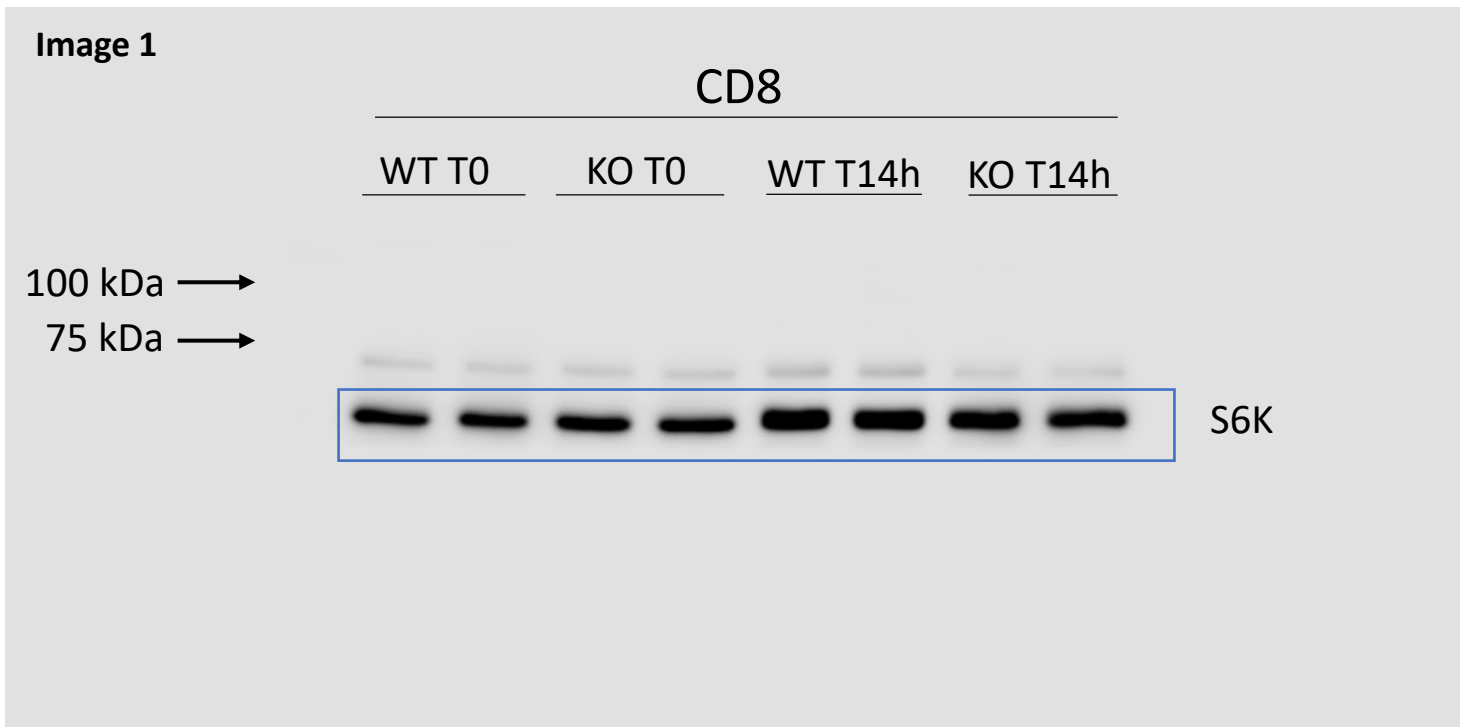
SDS gel 7,5% - loaded 20 µg protein/sample



In the next slide, two images of the same gel are provided:

- Image 1 has been acquired under the chemiluminescent channel (for HRP and AP chemiluminescent substrate), used for band quantification and representation of the abundance of the selected proteins;
- Image 2 has been acquired in the visible channel (excitation at 685 for protein detection), that allows to appreciate molecular weights (first line)

S6K (MW 70-85 kDa)
SDS gel 7,5% - loaded 20 µg protein/sample



In the next slide, two images of the same gel are provided:

- Image 1 has been acquired under the chemiluminescent channel (for HRP and AP chemiluminescent substrate), used for band quantification and representation of the abundance of the selected proteins;
- Image 2 has been acquired in the visible channel (excitation at 685 for protein detection), that allows to appreciate molecular weights (first line)

pS6 (MW 32 kDa)

SDS gel 15% - loaded 20 μ g protein/sample

Image 1

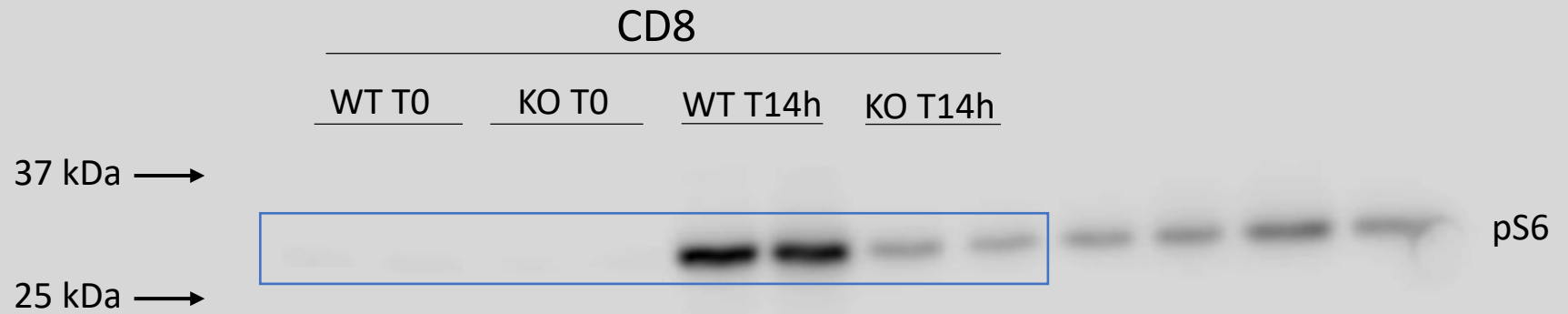
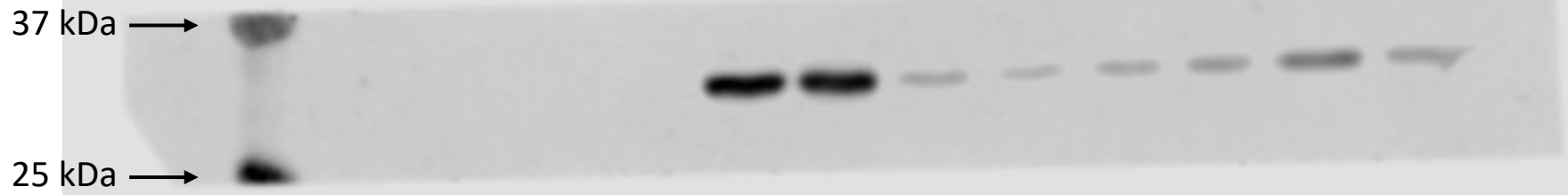


Image 2



In the next slide, two images of the same gel are provided:

- Image 1 has been acquired under the chemiluminescent channel (for HRP and AP chemiluminescent substrate), used for band quantification and representation of the abundance of the selected proteins;
- Image 2 has been acquired in the visible channel (excitation at 685 for protein detection), that allows to appreciate molecular weights (first line)

S6 (MW 32 kDa)

SDS gel 15% - loaded 20 µg protein/sample

Image 1

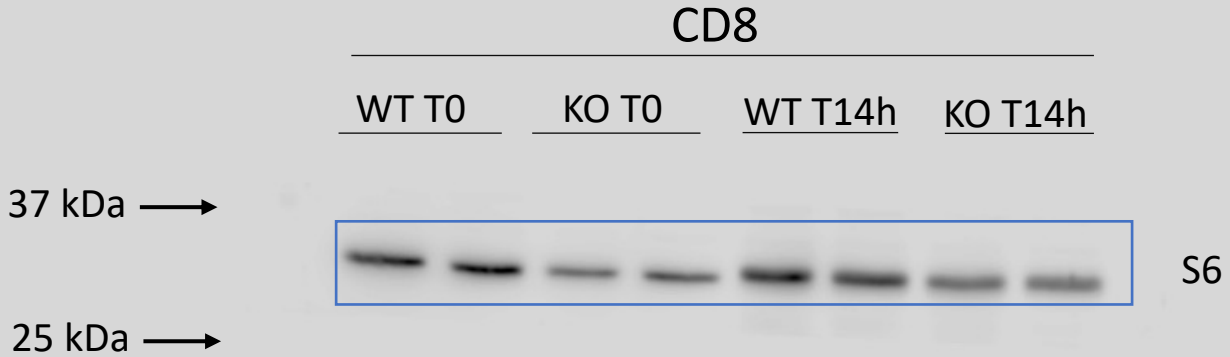
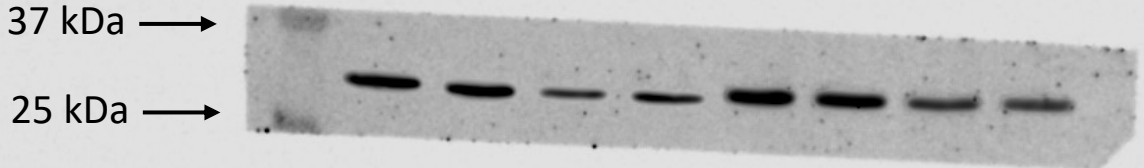


Image 2

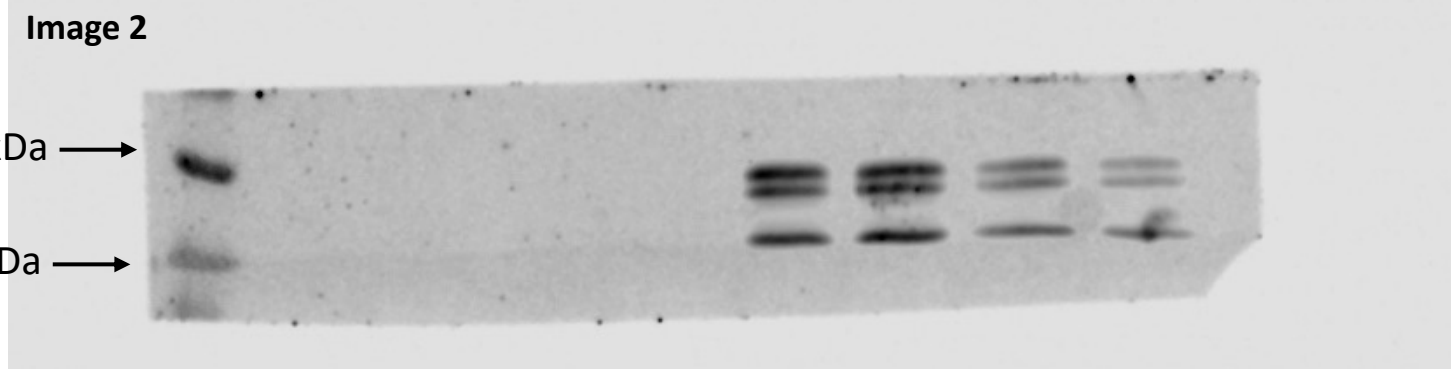
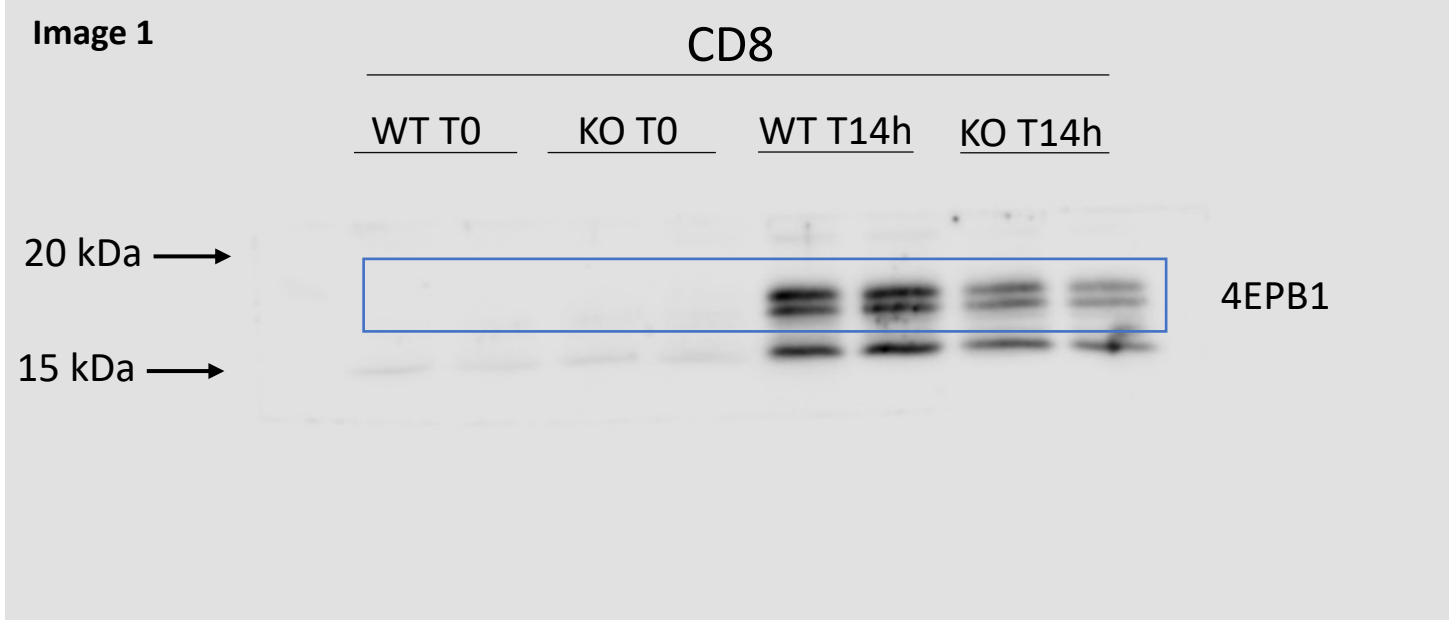


In the next slide, two images of the same gel are provided:

- Image 1 has been acquired under the chemiluminescent channel (for HRP and AP chemiluminescent substrate), used for band quantification and representation of the abundance of the selected proteins;
- Image 2 has been acquired in the visible channel (excitation at 685 for protein detection), that allows to appreciate molecular weights (first line)

p4EBP1 (MW 15-20 kDa)

SDS gel 15% - loaded 20 µg protein/sample



In the next slide, two images of the same gel are provided:

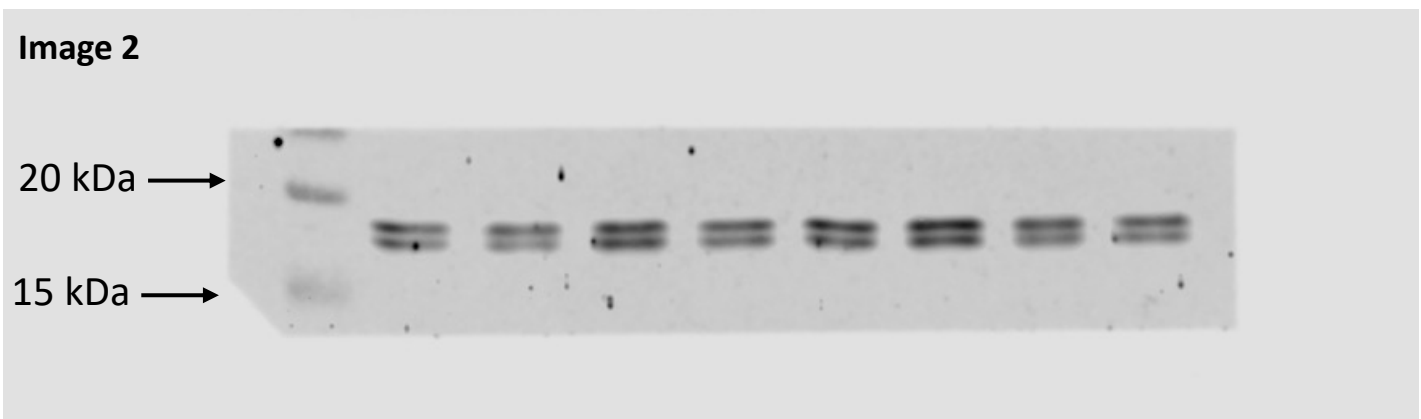
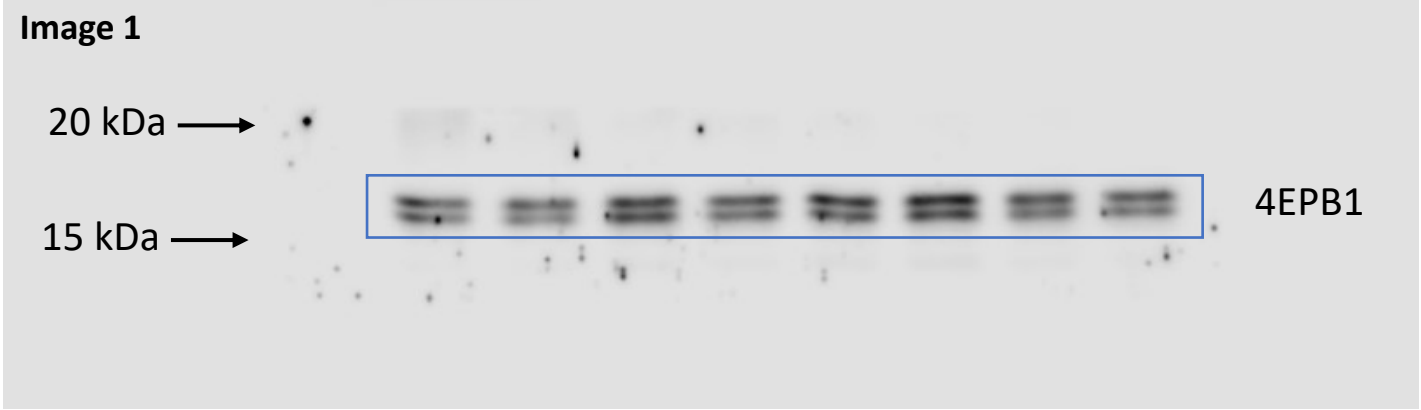
- Image 1 has been acquired under the chemiluminescent channel (for HRP and AP chemiluminescent substrate), used for band quantification and representation of the abundance of the selected proteins;
- Image 2 has been acquired in the visible channel (excitation at 685 for protein detection), that allows to appreciate molecular weights (first line)

4EBP1 (MW 15-20 kDa)– CD8

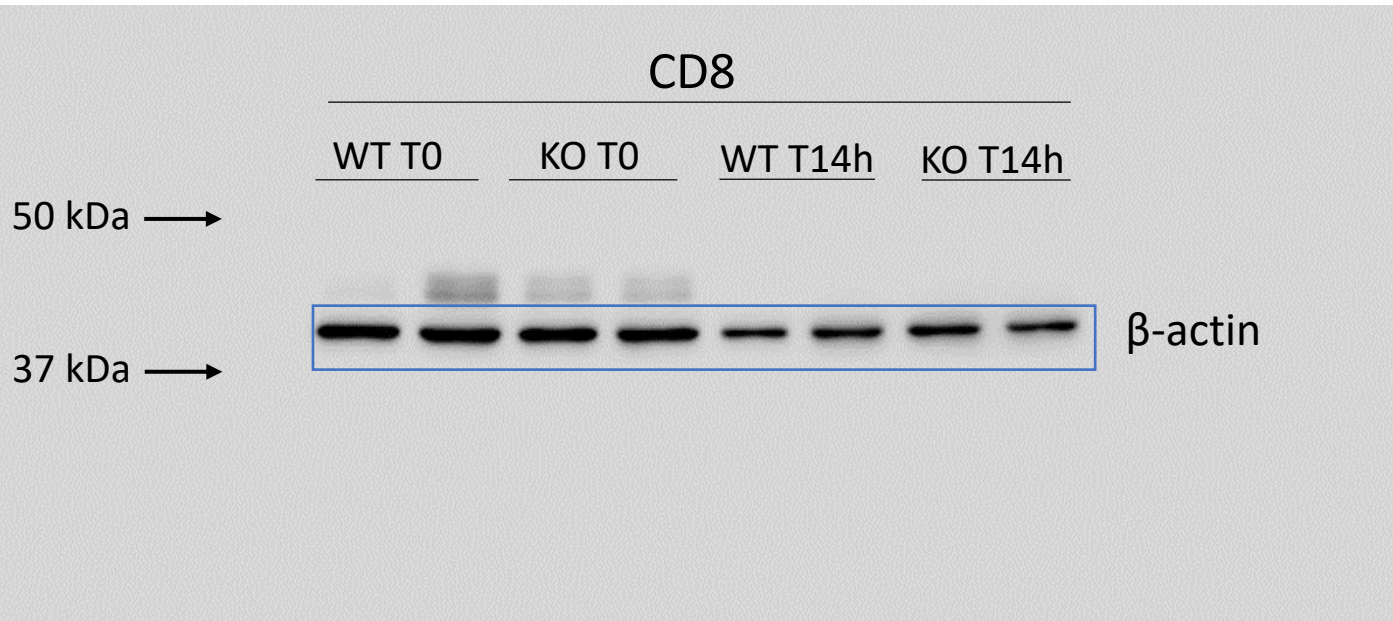
SDS gel 15% - loaded 20 µg protein/sample

CD8

WT T0 KO T0 WT T14h KO T14h



β -actin (MW 46 kDa)
SDS gel 7,5% - loaded 20 μ g protein/sample



In the next slide, two images of the same gel are provided:

- Image 1 has been acquired under the chemiluminescent channel (for HRP and AP chemiluminescent substrate), used for band quantification and representation of the abundance of the selected proteins;
- Image 2 has been acquired in the visible channel (excitation at 685 for protein detection), that allows to appreciate molecular weights (first line)

pmTOR (MW 289 kDa)

SDS gel 7,5% - loaded 20 µg protein/sample

Image 1

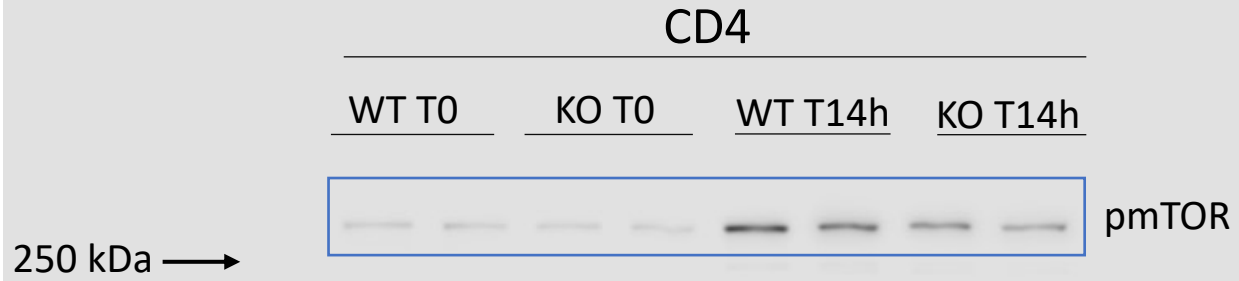
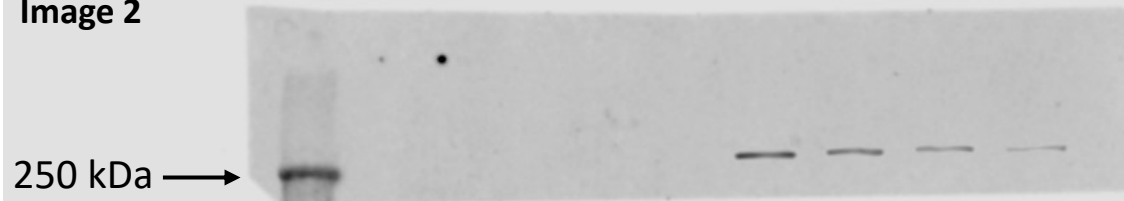


Image 2



In the next slide, two images of the same gel are provided:

- Image 1 has been acquired under the chemiluminescent channel (for HRP and AP chemiluminescent substrate), used for band quantification and representation of the abundance of the selected proteins;
- Image 2 has been acquired in the visible channel (excitation at 685 for protein detection), that allows to appreciate molecular weights (first line)

mTOR (MW 289 kDa)

SDS gel 7,5% - loaded 20 µg protein/sample

Image 1

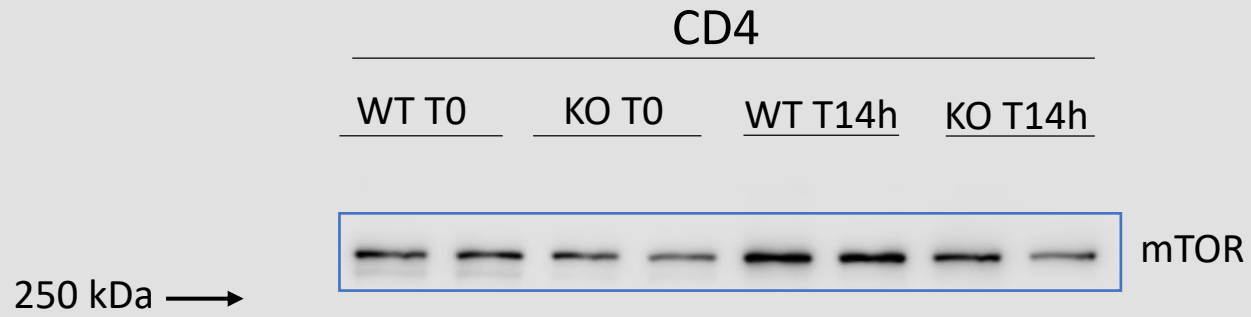
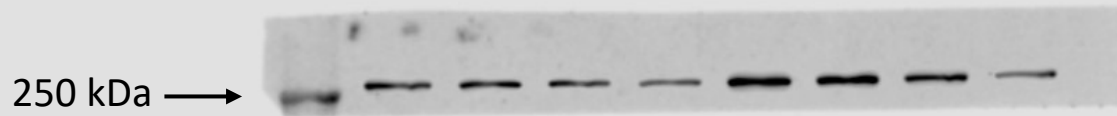


Image 2



In the next slide, two images of the same gel are provided:

- Image 1 has been acquired under the chemiluminescent channel (for HRP and AP chemiluminescent substrate), used for band quantification and representation of the abundance of the selected proteins;
- Image 2 has been acquired in the visible channel (excitation at 685 for protein detection), that allows to appreciate molecular weights (first line)

pS6K (MW 70-85 kDa)

SDS gel 7,5% - loaded 20 µg protein/sample

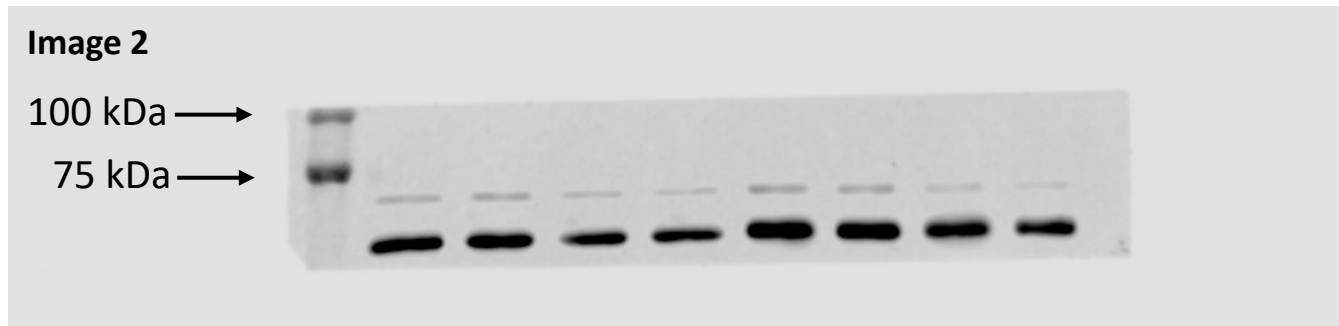
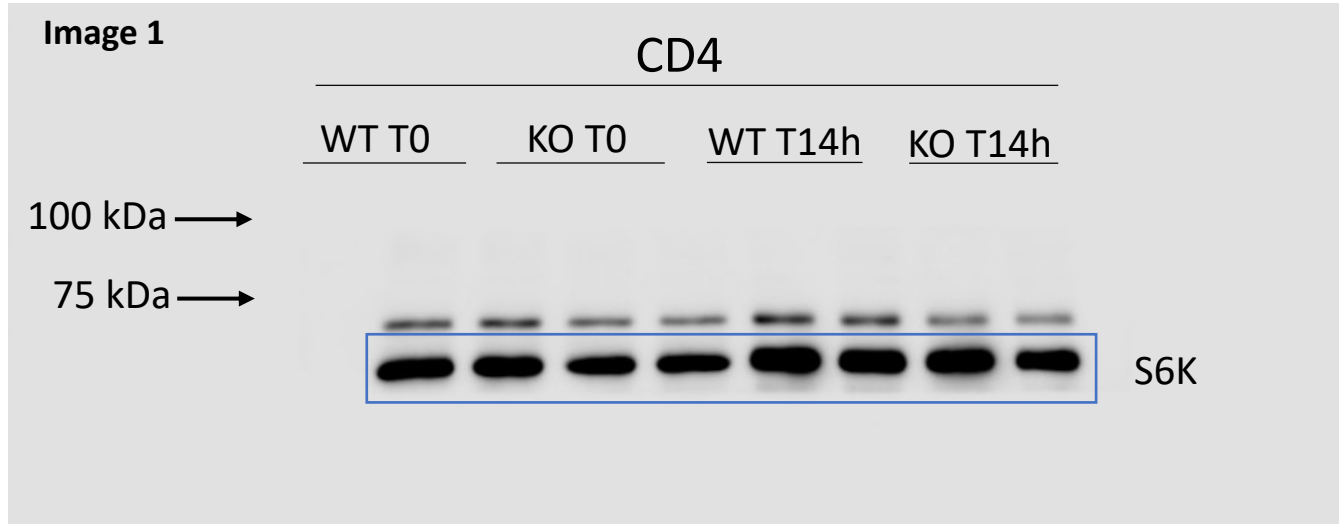


In the next slide, two images of the same gel are provided:

- Image 1 has been acquired under the chemiluminescent channel (for HRP and AP chemiluminescent substrate), used for band quantification and representation of the abundance of the selected proteins;
- Image 2 has been acquired in the visible channel (excitation at 685 for protein detection), that allows to appreciate molecular weights (first line)

S6k (MW 70-85 kDa)

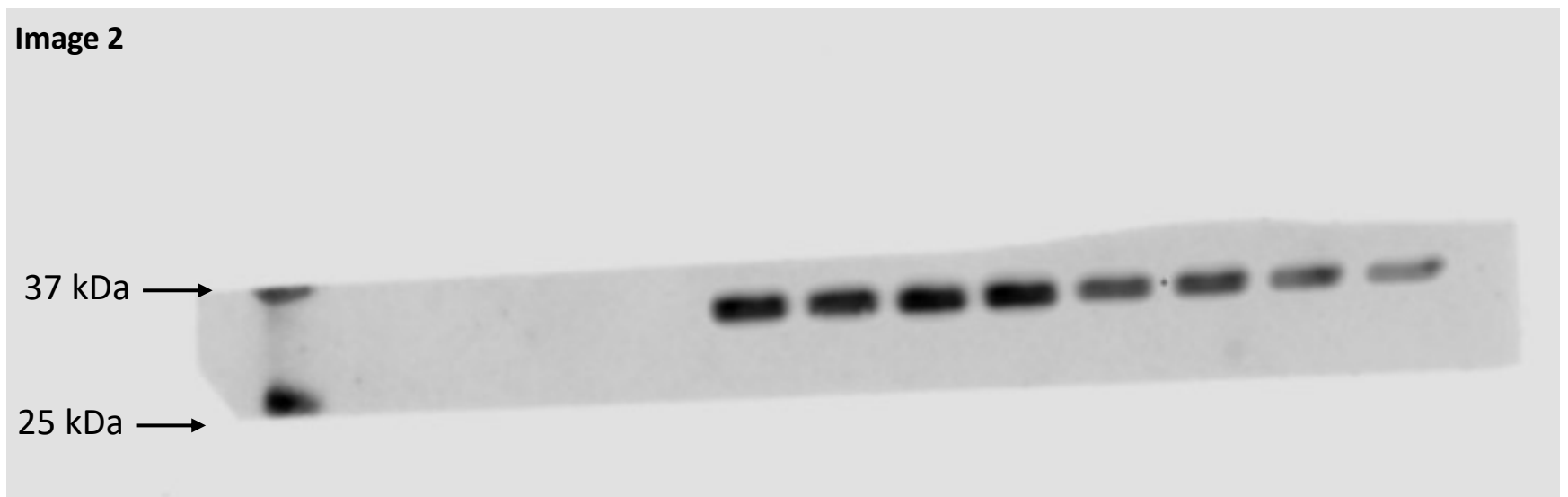
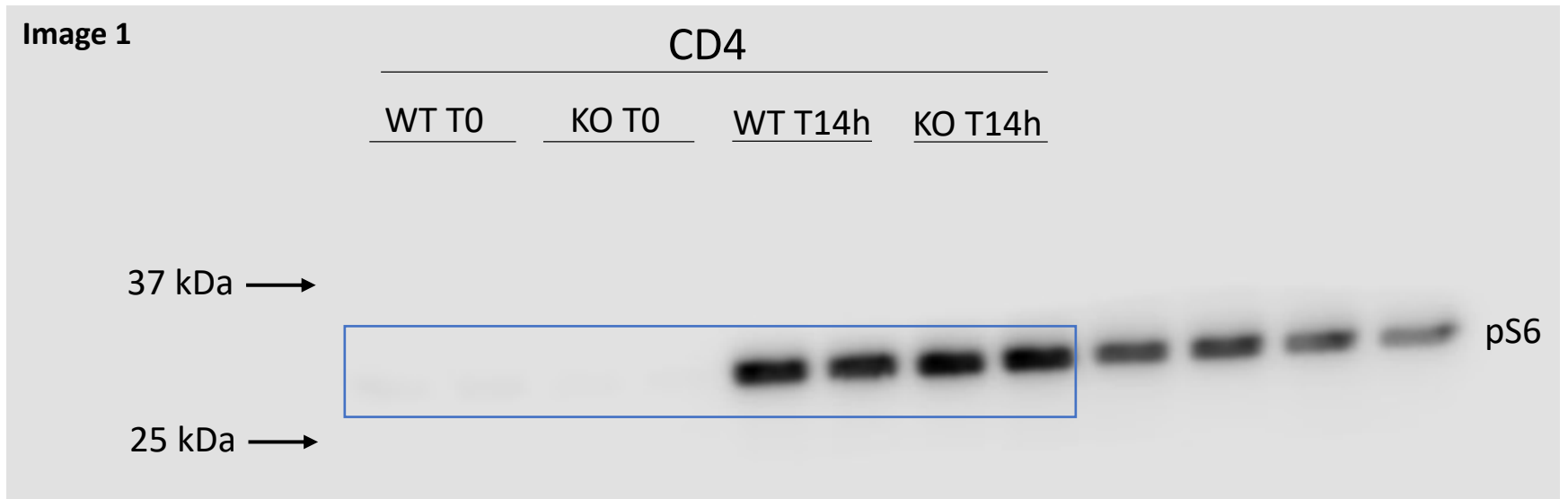
SDS gel 7,5% - loaded 20 µg protein/sample



In the next slide, two images of the same gel are provided:

- Image 1 has been acquired under the chemiluminescent channel (for HRP and AP chemiluminescent substrate), used for band quantification and representation of the abundance of the selected proteins;
- Image 2 has been acquired in the visible channel (excitation at 685 for protein detection), that allows to appreciate molecular weights (first line)

pS6 (MW 32 kDa)
SDS gel 15% - loaded 20 µg protein/sample



In the next slide, two images of the same gel are provided:

- Image 1 has been acquired under the chemiluminescent channel (for HRP and AP chemiluminescent substrate), used for band quantification and representation of the abundance of the selected proteins;
- Image 2 has been acquired in the visible channel (excitation at 685 for protein detection), that allows to appreciate molecular weights (first line)

S6 (MW 32 kDa)

SDS gel 15% - loaded 20 μ g protein/sample

Image 1

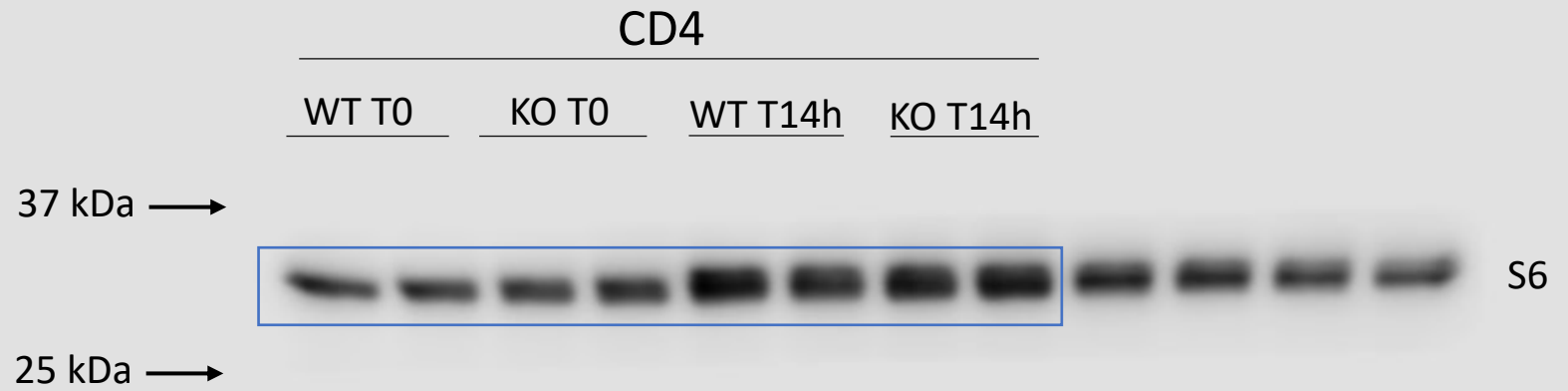
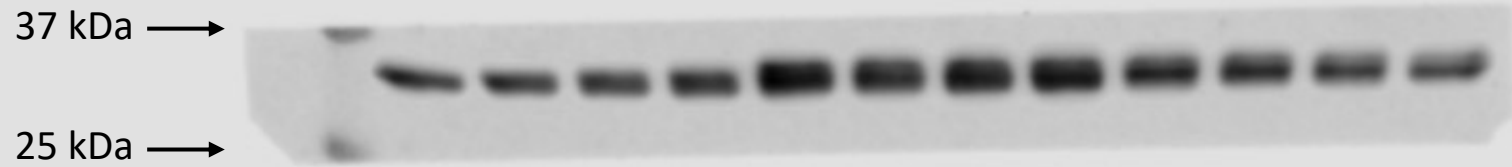


Image 2



In the next slide, two images of the same gel are provided:

- Image 1 has been acquired under the chemiluminescent channel (for HRP and AP chemiluminescent substrate), used for band quantification and representation of the abundance of the selected proteins;
- Image 2 has been acquired in the visible channel (excitation at 685 for protein detection), that allows to appreciate molecular weights (first line)

p4EBP1 (MW 15-20 kDa)

SDS gel 15% - loaded 20 µg protein/sample

Image 1

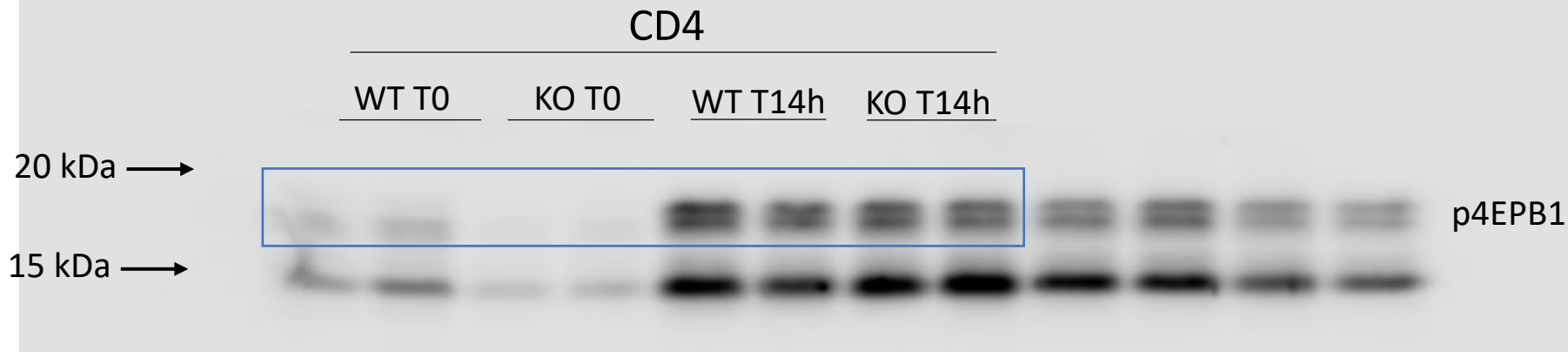
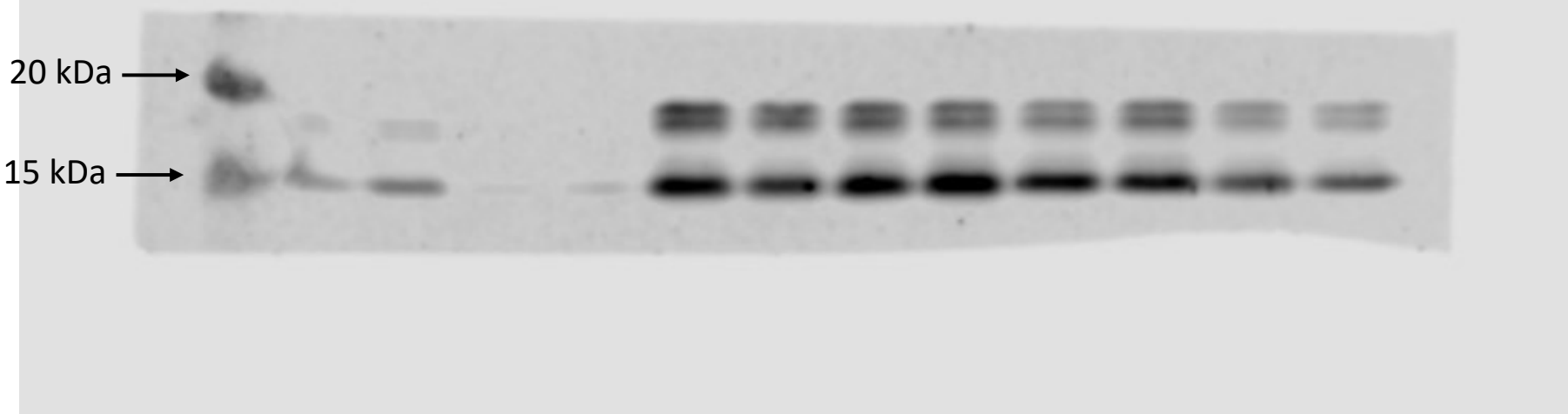


Image 2



In the next slide, two images of the same gel are provided:

- Image 1 has been acquired under the chemiluminescent channel (for HRP and AP chemiluminescent substrate), used for band quantification and representation of the abundance of the selected proteins;
- Image 2 has been acquired in the visible channel (excitation at 685 for protein detection), that allows to appreciate molecular weights (first line)

4EBP1 (MW 15-20 kDa)

SDS gel 15% - loaded 20 μ g protein/sample

Image 1

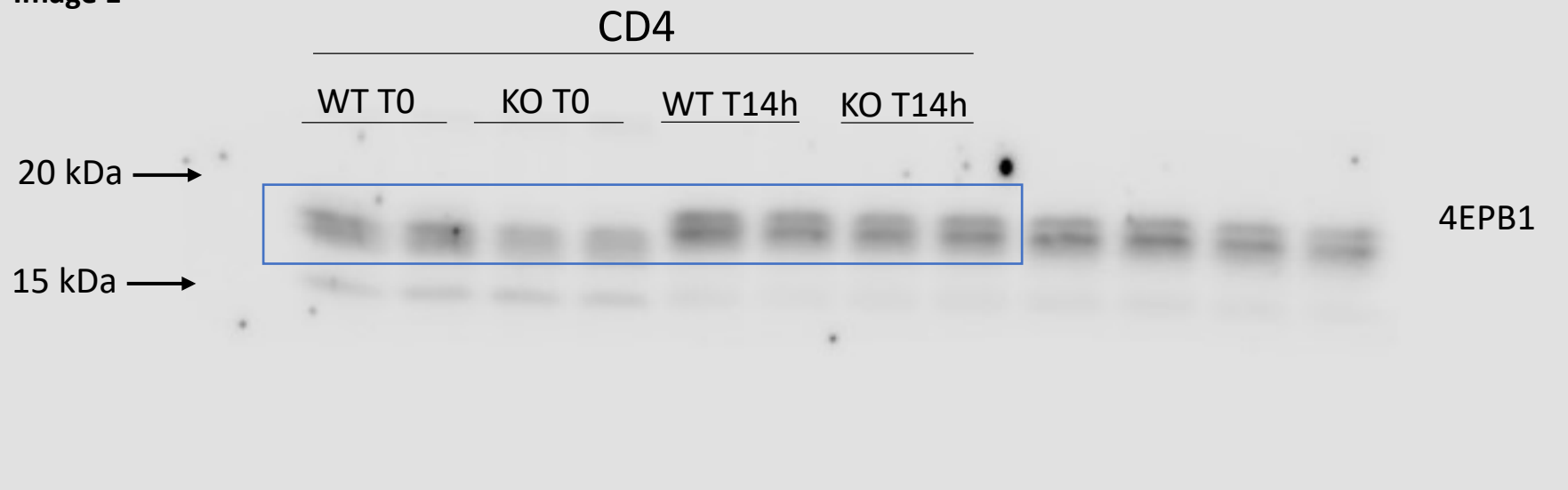
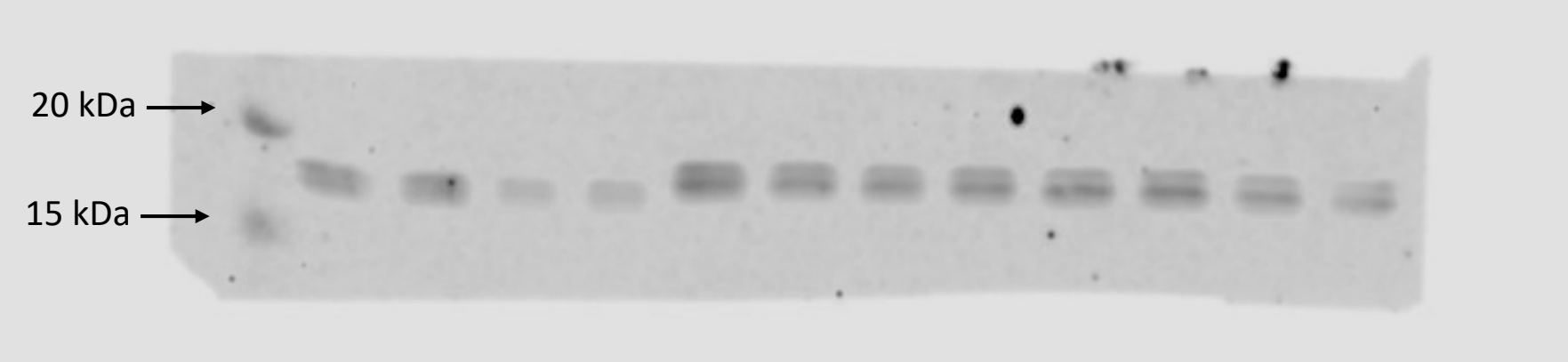


Image 2



β -actin (MW 46 kDa)

SDS gel 7,5% - loaded 20 μ g protein/sample

