

Supplemental Online Content

Sun L, Candelieri D, Anglin-Foote T, et al. Cetuximab-based vs carboplatin-based chemoradiotherapy for patients with head and neck cancer. *JAMA Otolaryngol Head Neck Surg*. Published online September 22, 2022. doi:10.1001/jamaoto.2022.2791

eTable 1. Coding definitions

eTable 2. Characteristics in patients excluded due to overlapping treatment regimens

eTable 3. Pre and post inverse probability weighting covariate standardized mean differences

eFigure 1. Pre and post inverse probability weighting kernel density and box plots of propensity scores

eFigure 2. Survival in patients excluded due to overlapping treatment regimens

This supplemental material has been provided by the authors to give readers additional information about their work.

eTable 1. Coding Definitions

Cohort Definition	
Oropharynx primary site	Keywords (ICDDescription, CPTname): Tonsil, soft palate, base of tongue, retromolar, oropharynx, vallecular, Waldeyer, adenoid, uvula
Baseline comorbidities¹	
Hypertension	ICD9: 401X, 402X, 403X, 404X, 405 ICD10 I10X, I11X, I12X, I13X, I15X, I16X
Diabetes	ICD9: 250X ICD10: E10X, E11X, E12X, E13X, E14X
Hyperlipidemia	ICD 9: 272.0, 272.1, 272.2, 272.4, 272.5, 272.8, 272.9 ICD 10: E78.0X, E78.1, E78.2, E78.4, E78.5
Atrial fibrillation	ICD 9: 427.3 ICD10: I48.0,I48.1,I48.2,I48.3, I48.4,I48.9
Obesity	ICD-9: 278.0 ICD-10: E66.0,E66.1,E66.2E66.8,E66.9
Carotid artery stenosis	ICD9: 433.10 ICD10: I65.2
Coronary artery disease	ICD9-9-CM 410X, 411X, 412X, 413X, 414X, 429.2, 429.7, V45.82, V45.81 ICD-10-CM I20X, I21X, I22X, I23X, I24X, I25X, Z95.5, Z98.61, Z95.1 CPT Codes: 00566, 33510, 33511, 33512, 33513, 33514, 33515, 33516, 33517, 33518, 33519, 33521, 33522, 33523, 33530, 33533, 33534, 33535, 33536, 33572, G8158, G8159, G8161, G8162, G8163, G8164, G8165, G8166, G8167, G8170, G8171, G8172, 92920, 92921, 92924, 92925, 92928, 92929, 92933, 92934, 92937, 92938, 92941, 92943, 92944, 92973, 92975, 92980, 92981, 92982, 92984, 92995, 92996, C9600, C9601, C9602, C9603, C9604, C9605, C9606, C9607, C9608, G0290, G029 Procedure codes ICD-9-CM: 36.03, 36.04, 36.06, 36.07, 36.09, 36.1X, 36.2, 36.3X, 17.55, 00.66 ICD-10-PCS: 02703XX 02704XX 02713XX 02714XX 02723XX 02724XX 2733XX 02734XX 02C03XX 02C04XX 02C13XX 02C14XX 02C23XX 02C24XX 02C33XX 02C34XX 02700XX 02710XX 02720XX 02730XX 02100XX 02110XX 02120XX 02130XX
Renal disease	ICD9: 403.01, 403.11, 403.91, 404.02, 404.03, 404.12, 404.13, 404.92, 404.93, 582.X, 583.X, 585.X, 586., 588, V42.0, V45.1X, V56.X ICD10: I12.0, N03.2-N03.7, N05.2, N05.7, N18.1-N18.9, N25.0, Z49.01, Z49.02, Z94.0, Z99.2

¹≥2 outpatient or ≥1 inpatient diagnosis codes prior to diagnosis

eTable 2. Characteristics in patients excluded due to overlapping treatment regimens.

Variable		Excluded patients (n=1,421)
Age, median (IQR)		62 (58, 66)
Gender	F	11 (0.8%)
	M	1410 (99.2%)
Race	White	1061 (79.2%)
	Black or African American	258 (19.3%)
	Other	20 (1.5%)
	<i>Missing</i>	82
Primary Site	Oropharynx	856 (60.2%)
	Non-oropharynx	565 (39.8%)
Married		520 (36.6%)
Year of Diagnosis ^b	2006-2010	616 (43.3%)
	2011-2015	580 (40.8%)
	2016-2020	225 (15.8%)
Smoking Status	Current smoker	591 (69.2%)
	Former smoker	100 (11.7%)
	Never smoker	163 (19.1%)
	<i>Missing</i>	567
Clinical tumor (T) stage	0	24 (1.8%)
	1	145 (10.8%)
	2	406 (30.2%)
	3	366 (27.2%)
	4	403 (30.0%)
	<i>Missing</i>	77
Clinical nodal (N) stage	0	200 (14.9%)
	1	187 (13.9%)
	2	871 (64.8%)
	3	86 (6.4%)
	<i>Missing</i>	77
ECOG Performance Status	0	322 (39.9%)
	1	405 (50.2%)
	2	61 (7.6%)
	≥3	19 (2.4%)
	<i>Missing</i>	614
Charlson Comorbidity Index	0	429 (30.2%)
	1	304 (21.4%)
	≥2	688 (48.4%)
Renal Disease		56 (3.9%)
Hypertension		1021 (71.9%)
Hyperlipidemia		790 (55.6%)
Diabetes		307 (21.6%)
CAD		315 (22.2%)

Abbreviations: IQR, interquartile range; ECOG, Eastern Cooperative Oncology Group.

^aMedian (interquartile range) for continuous variables; n (percentage of nonmissing data) for categorical variables.

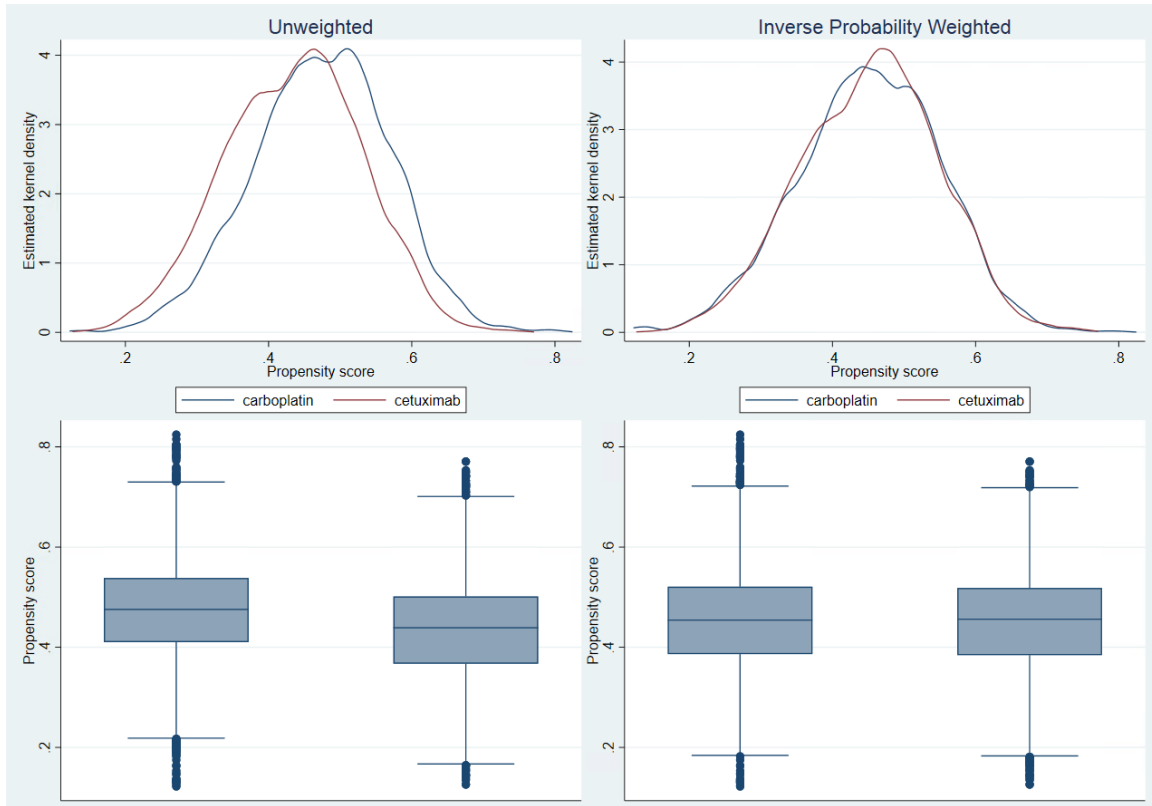
eTable 3. Pre and post inverse probability weighting covariate standardized mean differences.

	Pre-weighted populations			Post-inverse probability weighted populations		
	Carboplatin	Cetuximab	SMD	Carboplatin	Cetuximab	SMD
Age	64.49	66.80	-0.273	66.79	65.76	0.004
Male	0.99	0.99	-0.073	0.99	0.99	-0.001
Race			-0.049			-0.002
White	0.82	0.80		0.81	0.81	
Black or African American	0.17	0.19		0.18	0.18	
Other	0.02	0.02		0.02	0.02	
Oropharynx primary	0.55	0.59	-0.084	0.57	0.57	0.000
Married	0.39	0.39	0.001	0.39	0.39	0.002
Year of Diagnosis			-0.094			0.036
2006-2010	0.43	0.39		0.40	0.40	
2011-2015	0.38	0.39		0.38	0.39	
2016-2020	0.19	0.22		0.23	0.21	
Smoking status			-0.128			0.005
Current	0.36	0.40		0.36	0.41	
Former	0.08	0.09		0.09	0.09	
Never	0.10	0.16		0.12	0.14	
Clinical T stage			-0.054			0.002
T0	0.02	0.01		0.02	0.01	
T1	0.11	0.11		0.10	0.12	
T2	0.34	0.29		0.33	0.30	
T3	0.26	0.29		0.26	0.029	
T4	0.23	0.23		0.24	0.22	
Clinical N stage			-0.033			-0.003
N0	0.21	0.20		0.20	0.21	
N1	0.14	0.15		0.15	0.15	
N2	0.55	0.54		0.56	0.54	
N3	0.05	0.05		0.04	0.05	
ECOG Performance Status			0.034			0.064
0	0.19	0.24		0.20	0.24	
1	0.24	0.25		0.25	0.25	
2 or greater	0.06	0.08		0.07	0.08	
Charlson Comorbidity Index			-0.163			-0.002
0	0.24	0.19		0.21	0.21	
1	0.19	0.16		0.17	0.17	
2 or greater	0.57	0.66		0.62	0.62	
Hypertension	0.73	0.77	-0.076	0.76	0.75	0.005
Hyperlipidemia	0.61	0.63	-0.042	0.62	0.62	0.006
Diabetes	0.25	0.29	-0.087	0.27	0.27	0.008
CAD	0.31	0.34	-0.067	0.32	0.32	0.001
Renal disease	0.10	0.14	-0.119	0.12	0.12	-0.004

SMD, Standardized mean difference

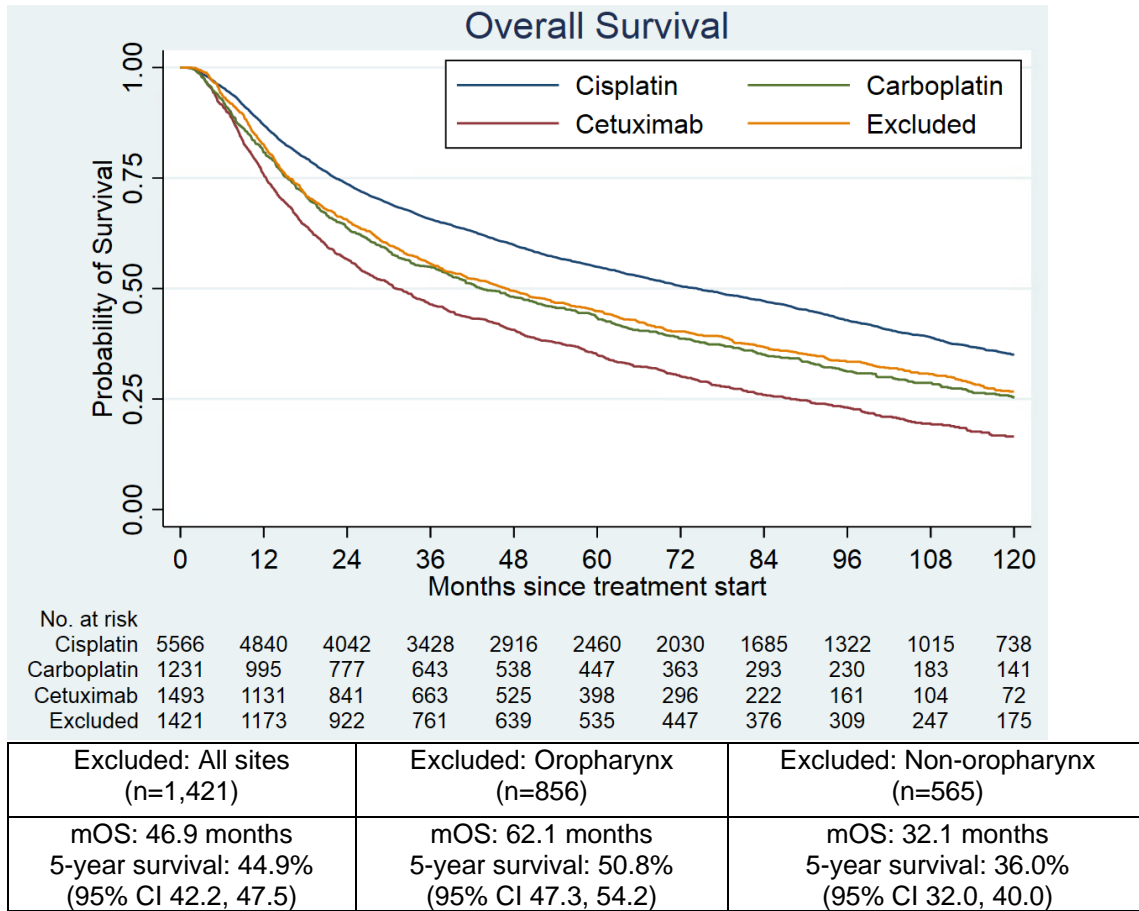
Mean for continuous variables; proportion for categorical variables are displayed.

eFigure 1. Pre and post inverse probability weighting kernel density and box plots of propensity scores.



Kernel density and box-and-whisker plots showing improved balance of pseudo-populations after inverse probability treatment weighting (R) compared to original unweighted populations (L).

eFigure 2. Survival in patients excluded due to overlapping treatment regimens.



Kaplan-Meier curves and survival statistics for patients excluded due to inability to uniquely categorize systemic treatment regimen.