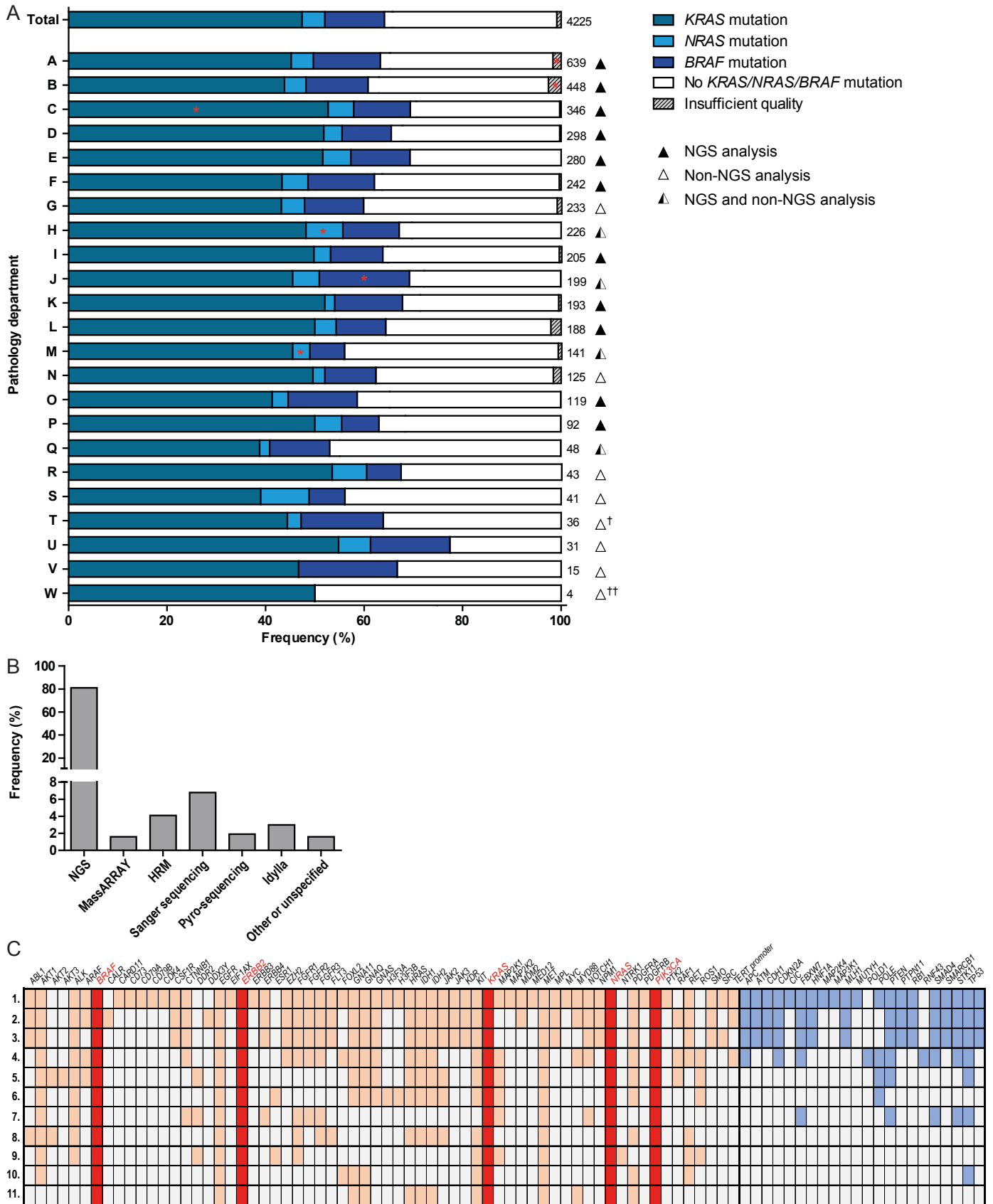


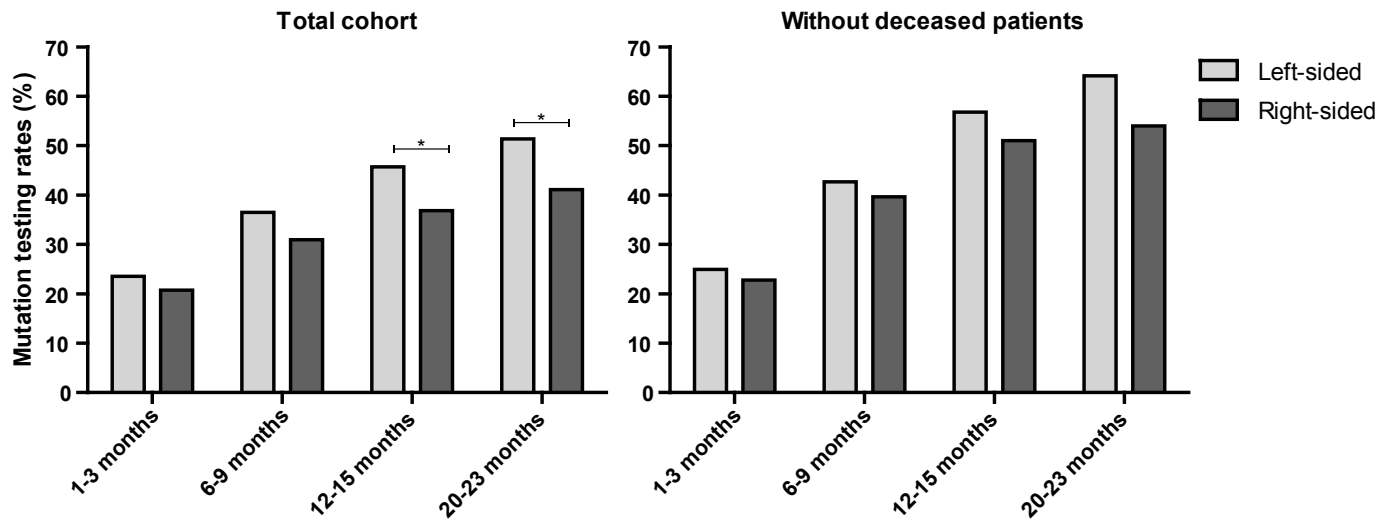
Supplementary Figure 1



Supplementary Figure 1: Mutation analysis of CRC patients

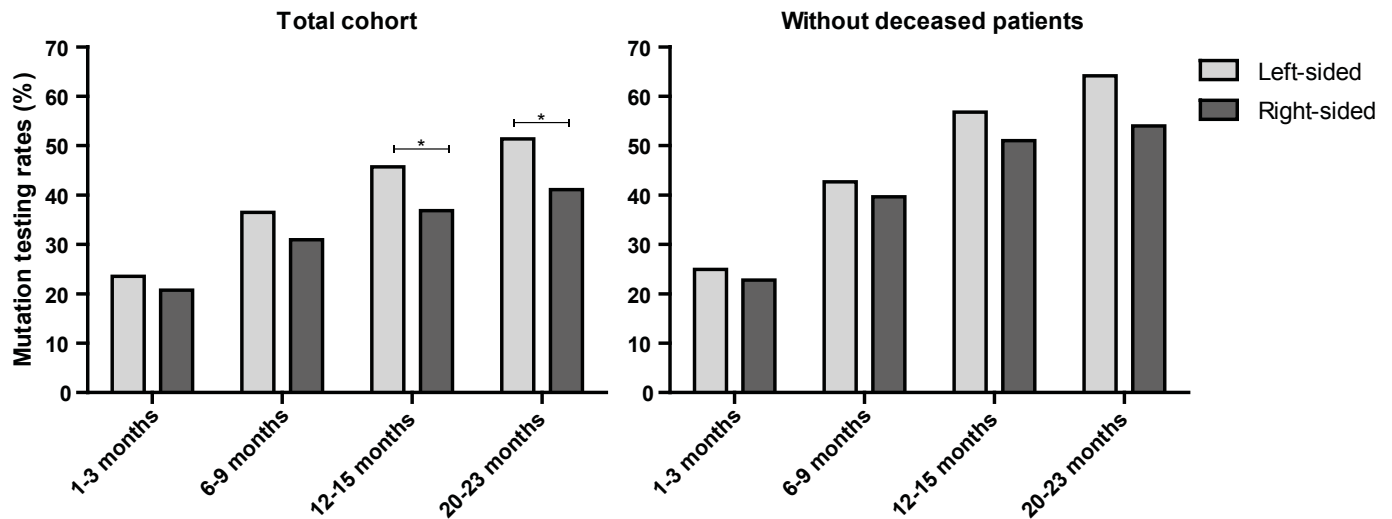
(A) Overview of reported *KRAS*, *NRAS* and *BRAF* mutation frequencies per pathology department performing the analysis. The total number of analyses is displayed behind the bar. The Fisher's Exact test was applied to study differences in uptake. †Only 12 months of follow-up as the pathology department started outsourcing mutation analysis after 12 months of follow-up; ††Only 6 months of follow-up due to introduction of own mutation analysis during follow-up; \*\* p<0.001; \* p<0.05. (B) Frequency of techniques used for the mutation analysis displayed in figure 1 by the 23 pathology departments. (C) Overview of the targeted NGS panels that were used for mutation analyses. Individual panels are shown, although overlap in NGS panel use among pathology departments was present. Genes were not per se covered in total, but mainly frequently mutated gene (i.e. hotspot) regions were included in these panels. Panel 1 to 7 were laboratory-developed tests (LDTs). Panel 8 (Assuragen pan cancer panel), panel 9 (QiAact Lung DNA Panel), panel 10 (Illumina TruSight tumor 15 kit) and panel 11 (Life Technologies Lung-Colon panel) were commercial NGS panels.

## Supplemental Figure 2

**Supplementary Figure 2: Mutation testing rates of CRC patients**

The uptake of mutation analysis for stage IV mCRC patients after different periods of follow-up: 1-3 months, 6-9 months, 12-15 months and 20-23 months of follow-up of pathology reports. Data is shown for the whole cohort (left;  $N=606$ ) and corrected for patients alive one month after initial diagnosis (right;  $N=560$ ; right), 6 months after diagnosis ( $N=426$ ), 12 months after diagnosis ( $N=313$ ) and after 21 months ( $N=222$ ). The Fisher's exact test was applied to study significance of uptake between left-sided and right-sided tumors.  $*P < 0.05$ .

## Supplementary Figure 3

**Supplementary Figure 3: Mutation testing rates of CRC patients according to the topography of the tumor**

The uptake of mutation analysis for stage IV CRC patients categorized according to left- or right-sided location of the tumor after different periods of follow-up: 1-3 months, 6-9 months, 12-15 months and 20-23 months of follow-up. Data is shown for the whole cohort (left;  $N=606$ ) and corrected for patients alive one month after initial diagnosis (right;  $N=560$ ; right), 6 months after diagnosis ( $N=426$ ), 12 months after diagnosis ( $N=313$ ) and after 21 months ( $N=222$ ). The Fisher's exact test was applied to study significance of uptake between left-sided and right-sided tumors. \* $P < 0.05$ .