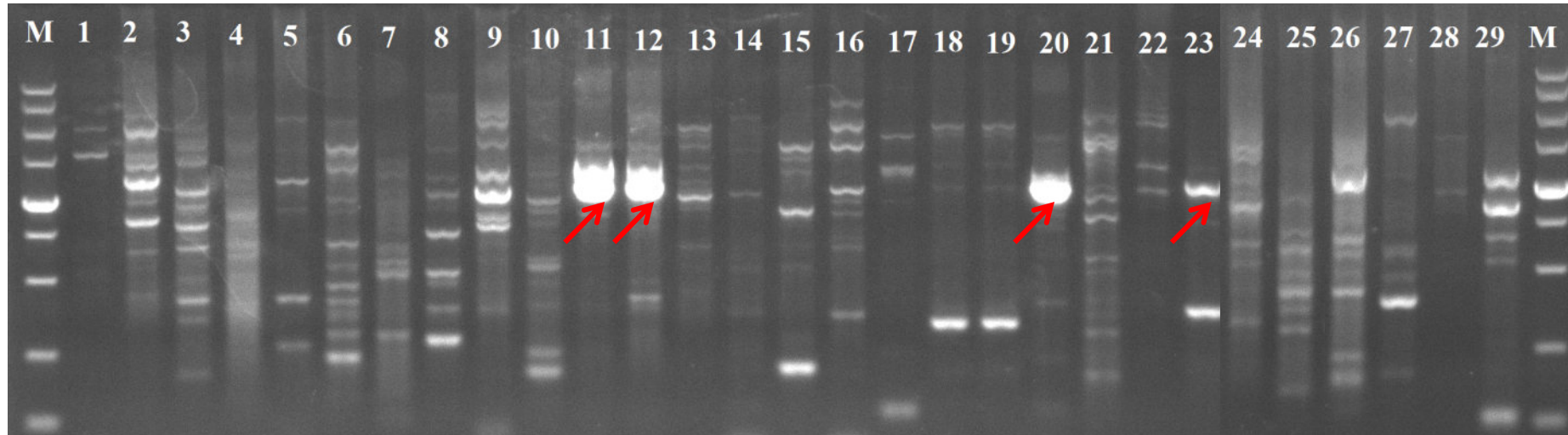


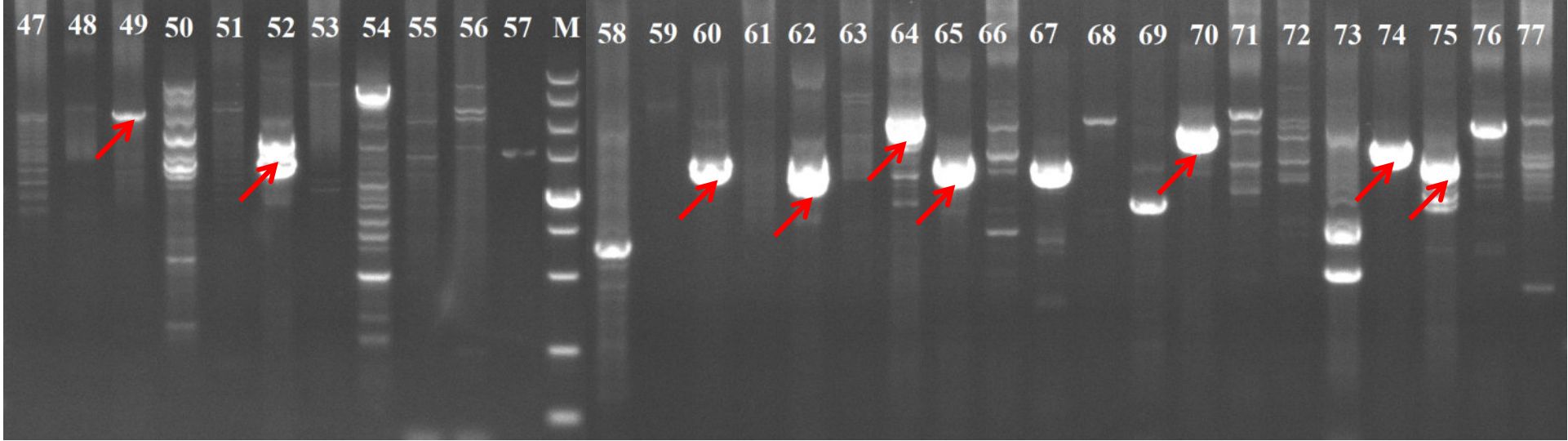
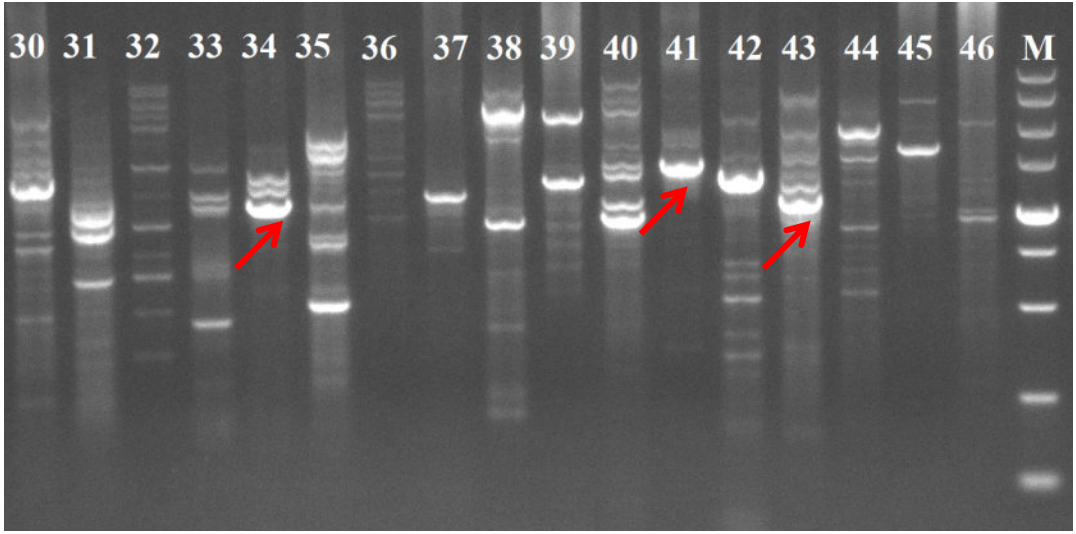
PCR results and visualization of CSV  
breakpoints validated through Sanger  
sequencing

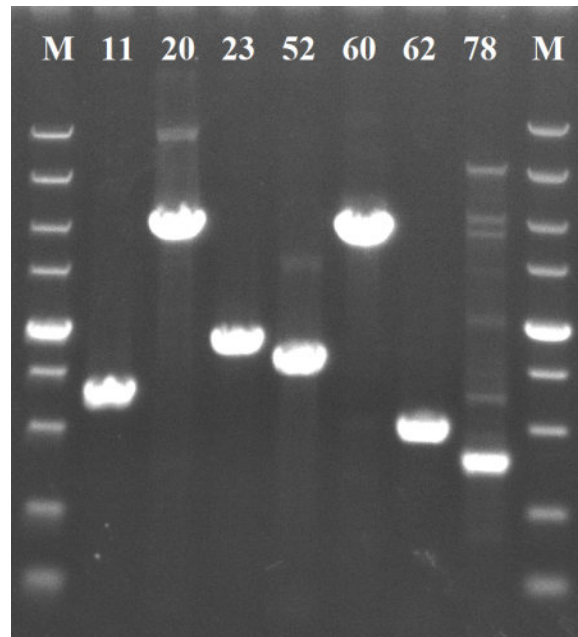
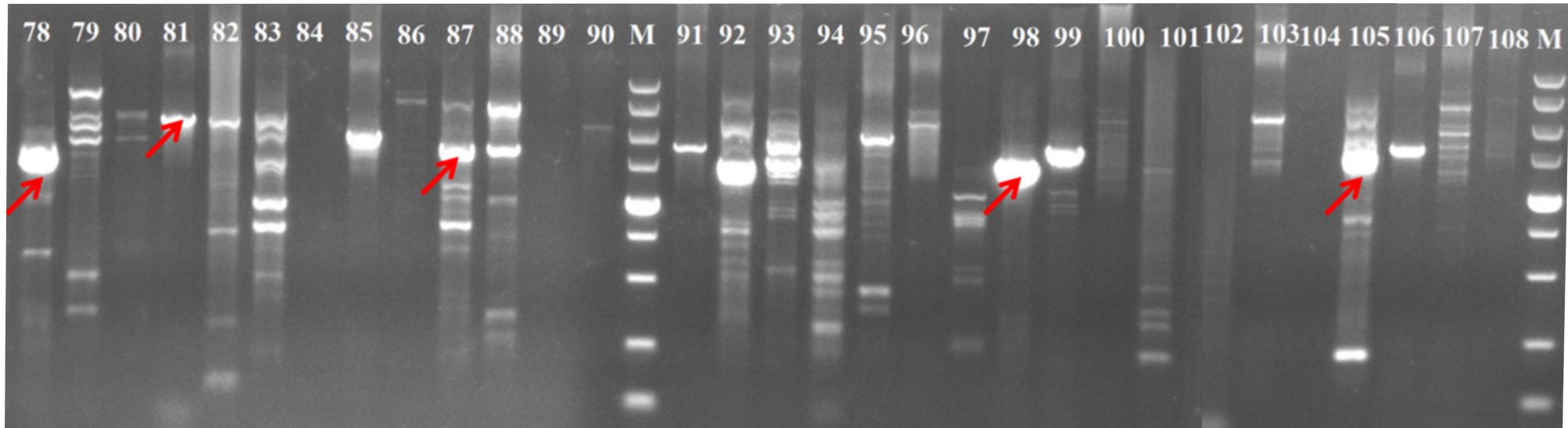
PCR electrophoretic bands

**M:** DL5000 DNA marker. From bottom to top is: 100bp, 250bp, 500bp, 750bp, 1,000bp, 1,500bp, 2,000bp, 3,000bp and 5,000bp.

**Red arrow:** PCR product selected for sequencing with bright electrophoretic bands of targeted sizes



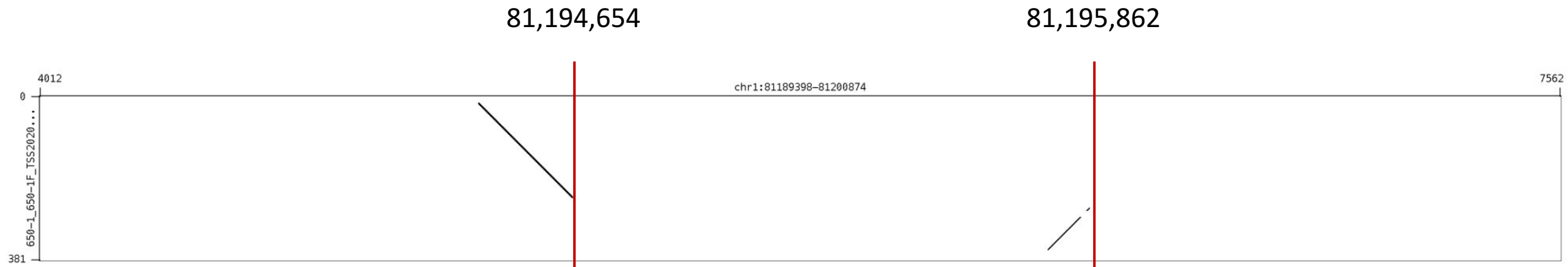




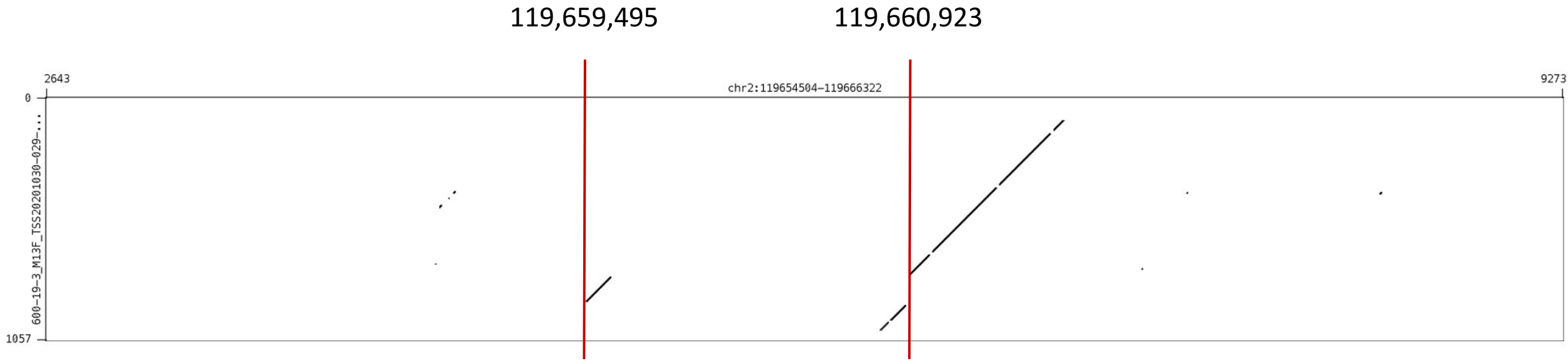
**We have designed extra primers for events 11, 20, 23, 52, 60, 62 and 78.**

# Gepard visualization of validated CSVs

# Mako chr1:81,194,398-81,195,874



# Mako chr2:119,659,504-119,661,322

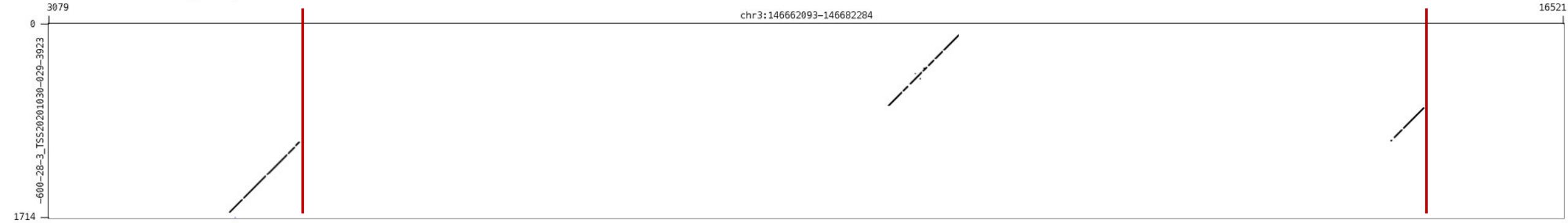




# Mako chr3:146,667,093-146,677,284

146,667,384

146,677,380



# Mako chr5:141,480,327-141,483,116

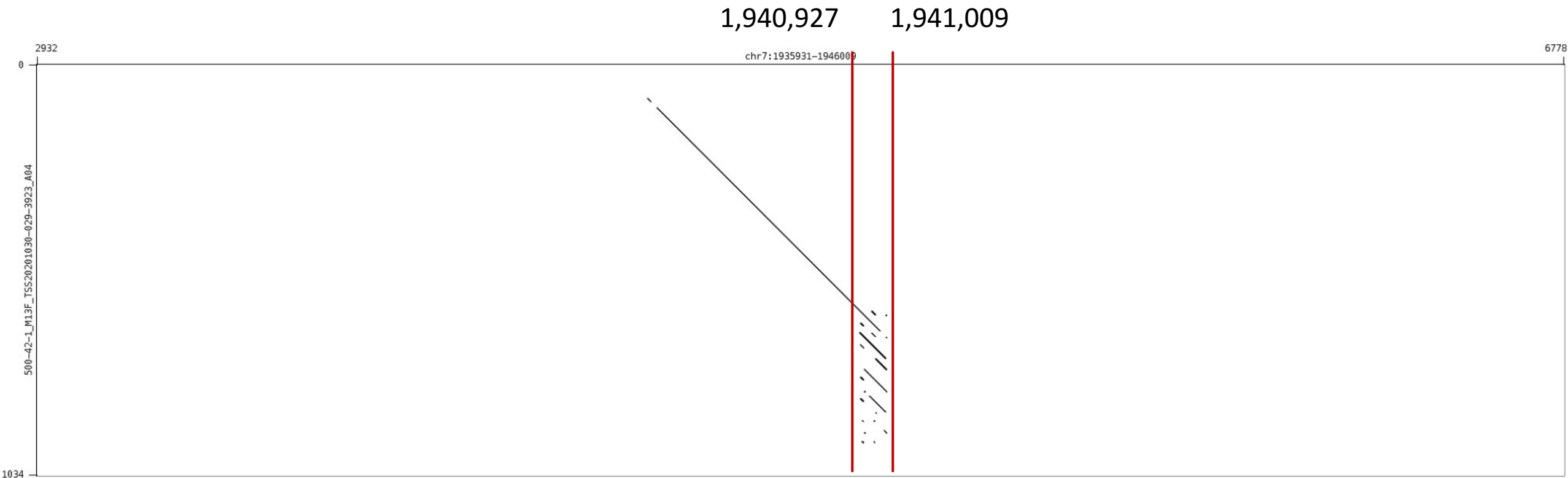
141,480,314

141,482,742

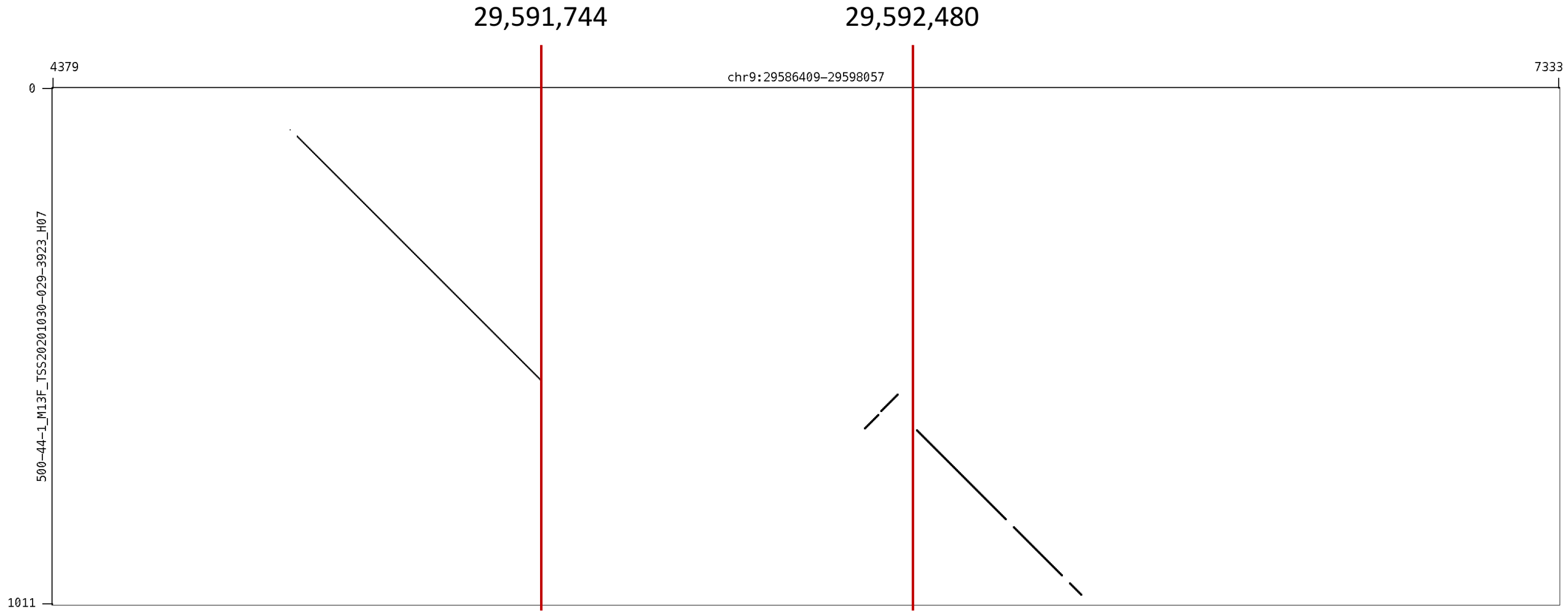
chr5:141475327-141488116



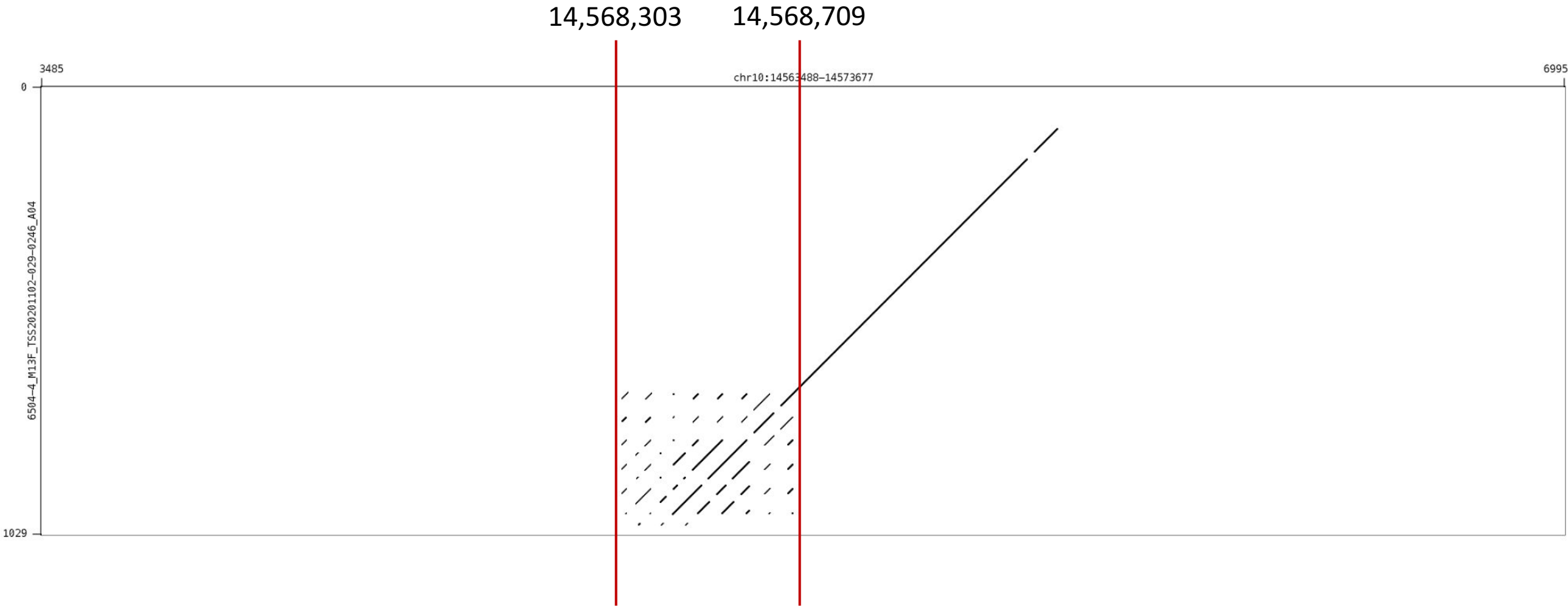
# Mako chr7:1,940,931-1,941,009



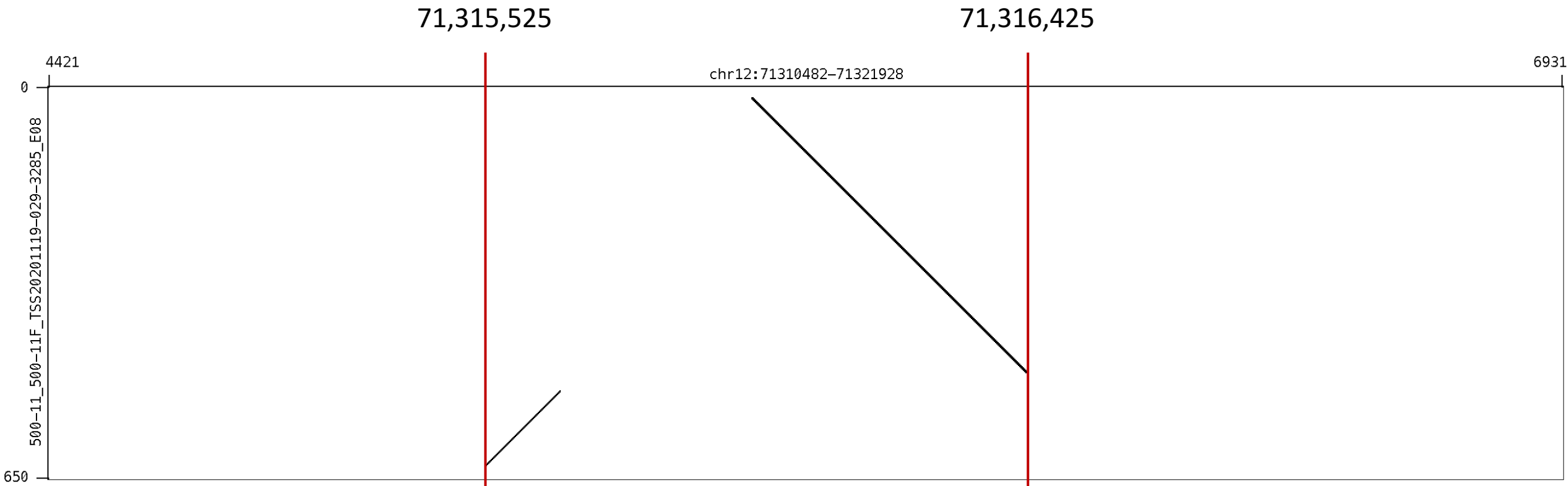
# Mako chr9:29,591,409-29,593,057



# Mako chr10:14,568,488-14,568,677



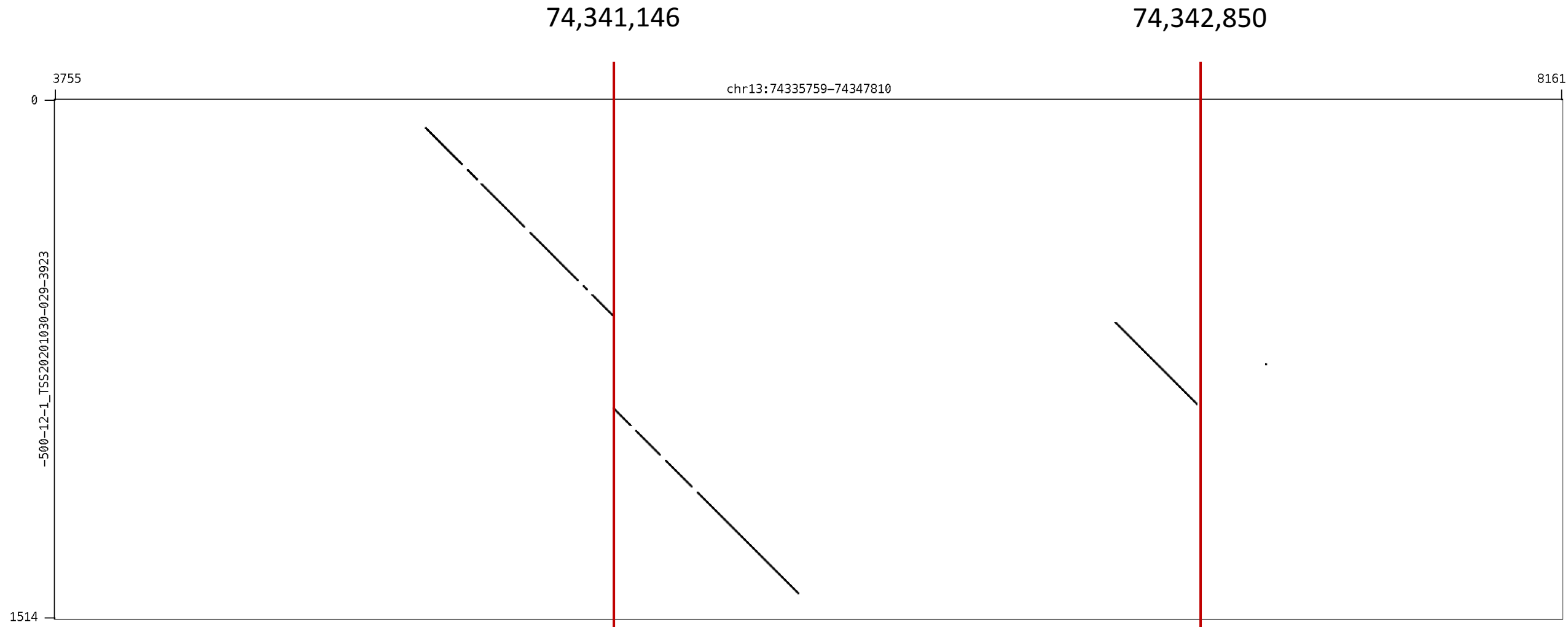
# Mako chr12:71,315,482-71,316,928



# Mako chr12:77,989,900-77,994,324



# Mako chr13:74,340,759-74,342,810

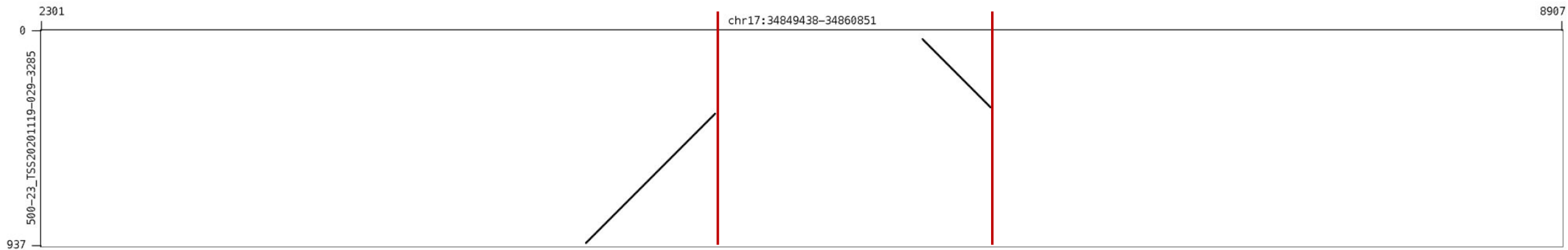




# Mako chr16:78,004,459-78,007,456



# Mako chr17:34,854,438-34,855,851



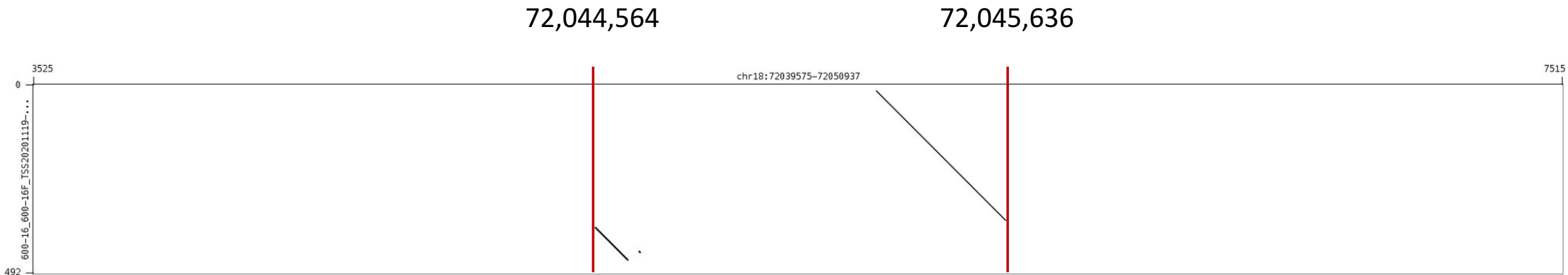
# Mako chr17:48,538,270-48,540,171

48,538,265

48,539,849



# Mako chr18:72,044,575-72,045,937



# Mako chr21:26,001,844-26,002,990

26,001,833

26,002,385

