

**Cell Reports Medicine, Volume 3**

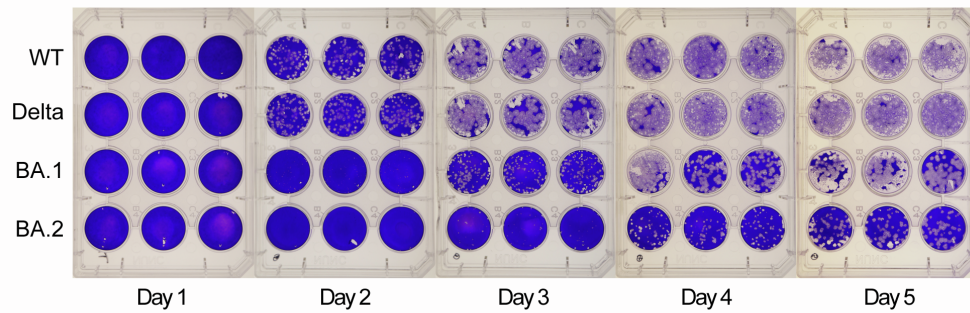
## **Supplemental information**

### **Virological features and pathogenicity**

#### **of SARS-CoV-2 Omicron BA.2**

**Jasper Fuk-Woo Chan, Bingjie Hu, Yue Chai, Huiping Shuai, Huan Liu, Jialu Shi, Yuanchen Liu, Chaemin Yoon, Jinjin Zhang, Jing-Chu Hu, Yuxin Hou, Xiner Huang, Terrence Tsz-Tai Yuen, Tianrenzheng Zhu, Wenjun Li, Jian-Piao Cai, Cuiting Luo, Cyril Chik-Yan Yip, Anna Jinxia Zhang, Jie Zhou, Shuofeng Yuan, Bao-Zhong Zhang, Jian-Dong Huang, Kelvin Kai-Wang To, Kwok-Yung Yuen, and Hin Chu**

## 1 Supplementary Figures and Figure Legends



2

3 **Supplementary Fig. 1. Plaque assay images of SARS-CoV-2 WT, Delta, BA.1, or BA.2**

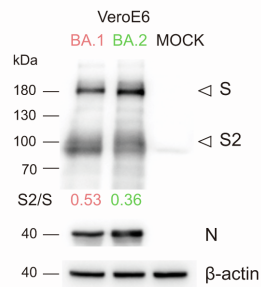
4 **in VeroE6-TMPRSS2 cells.** Related to figure 2. VeroE6-TMPRSS2 cells were challenged

5 with SARS-CoV-2 WT, Delta, BA.1 and BA.2. The infected cells were fixed with 4%

6 paraformaldehyde at the designated time points and stained with crystal violet ( $n = 3$ ). WT,

7 wildtype SARS-CoV-2. The experiment was repeated three times independently with similar

8 results. Each well represents one biological repeat.



9

10 **Supplementary Fig. 2. Western blot analysis of SARS-CoV-2 spike.** Related to figure 2.

11 VeroE6 cells were infected with SARS-CoV-2 BA.2 or BA.1 at 0.1 MOI. Cell lysates were

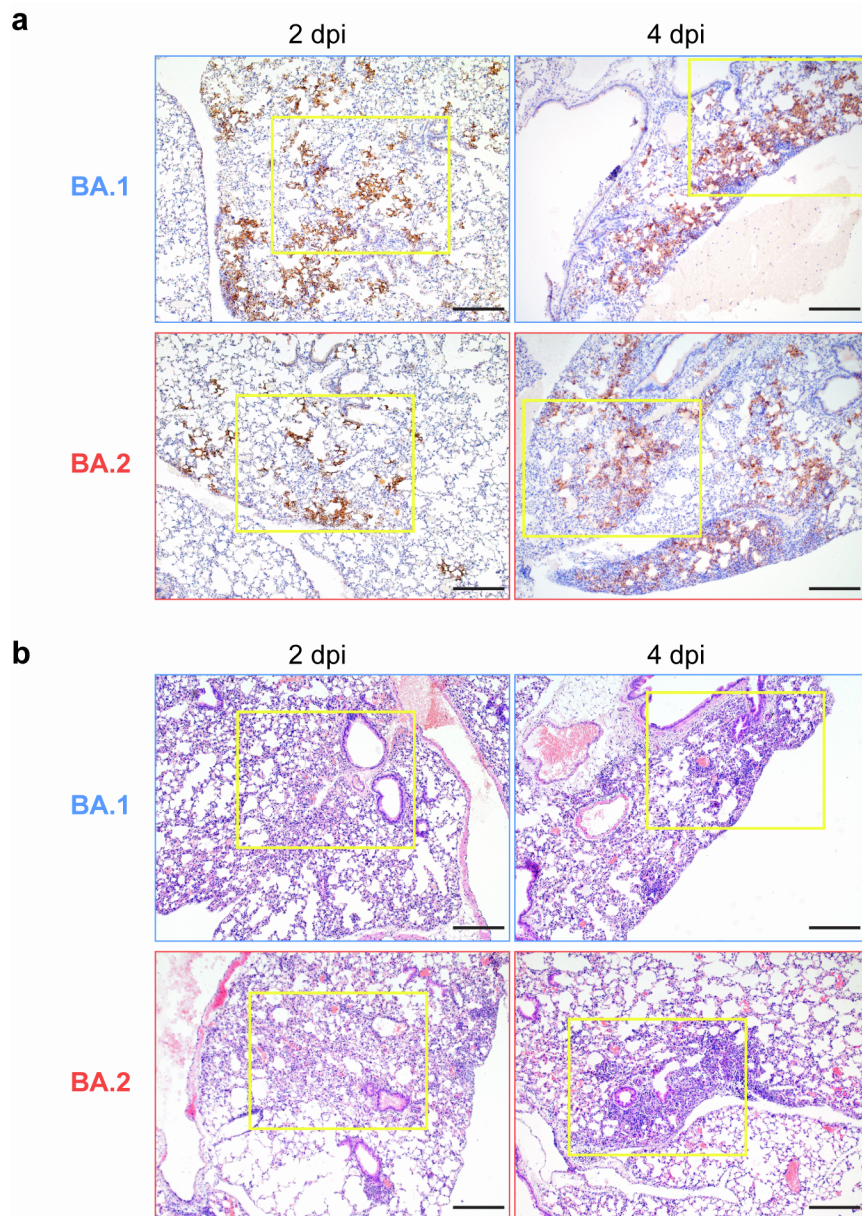
12 harvested at 48 hours post infection for detection of SARS-CoV-2 spike cleavage using an

13 anti-spike S2 antibody. Representative images of SARS-CoV-2 spike and nucleocapsid

14 Western blots were shown with β-actin added as a sample processing control. Spike,

15 nucleocapsid, and β-actin was run on three different gels and detected on three different

16 membranes. The experiment was repeated three times independently with similar results.



17

18 **Supplementary Fig. 3. Histological findings of BA.2 in K18-hACE2 mice.** Related to  
 19 figure 3. Male and female 6- to 8-week old K18-hACE2 mice were infected with  $5 \times 10^3$  PFU  
 20 SARS-CoV-2 BA.2 or BA.1 ( $n = 4$  for BA.2 and  $n = 5$  for BA.1). Lungs of the infected  
 21 mice were collected on 2 or 4 dpi for histological analysis. **a** Representative images of  
 22 immunohistochemistry staining for the detection of nucleocapsid protein (brown) of SARS-  
 23 CoV-2 in lungs of infected mice. **b** Representative images of hematoxylin and eosin (H&E)  
 24 staining for the detection of pathological changes in the lungs of infected mice. Images in (a  
 25 and b) are representative images at lower magnification for Figure 3f and 3g. Data were

26 obtained from two independent experiments. Four to six sections were taken from each  
27 mouse for histology and immunochemistry analysis. Scale bar represents 200  $\mu\text{m}$ .

28