

Electronic Supplementary Information (ESI)

**Construction of a redox-responsive drug delivery system
utilizing the volume of AS1411 spatial configuration gating
mesoporous silica pore**

Lu Zhou ^a, Yajie Zhang ^b and Yong Ma ^{*a}

^a Department of Chemistry, School of Forensic Medicine, China
Medical University, Shenyang 110122, China

^b Department of gastroenterology, Shengjing Hospital of China
Medical University, Shenyang 110004, China

* Corresponding author. E-mail: yma10@cmu.edu.cn

Figures

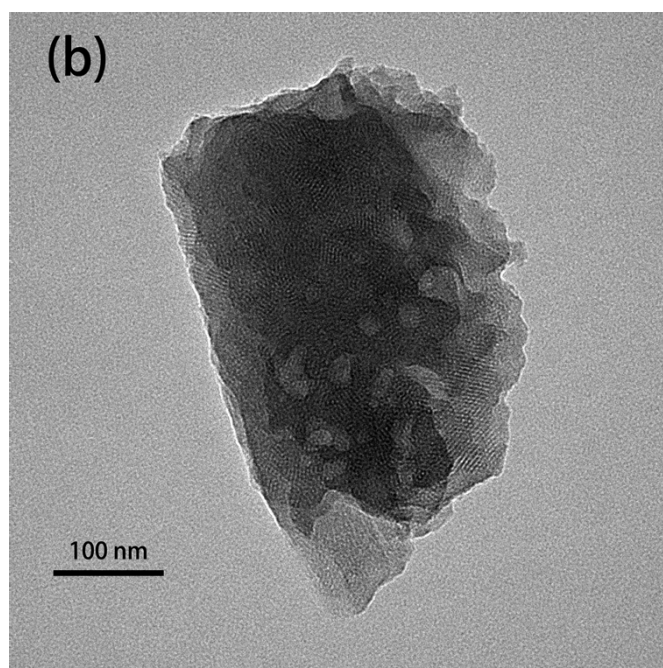
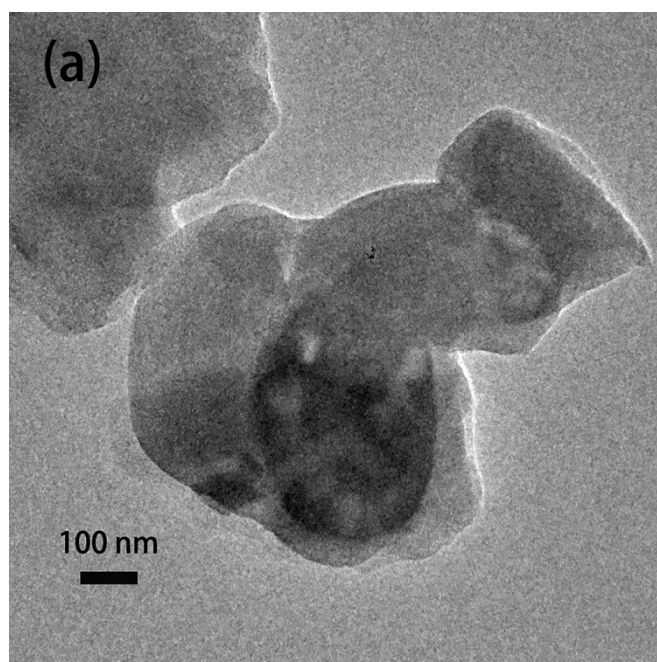


Figure S1. TEM images of (a) MCM-41; (b) MCM-41-SS-AS1411