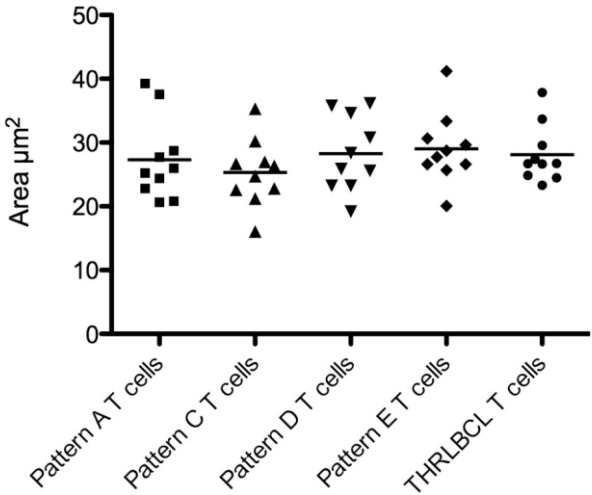
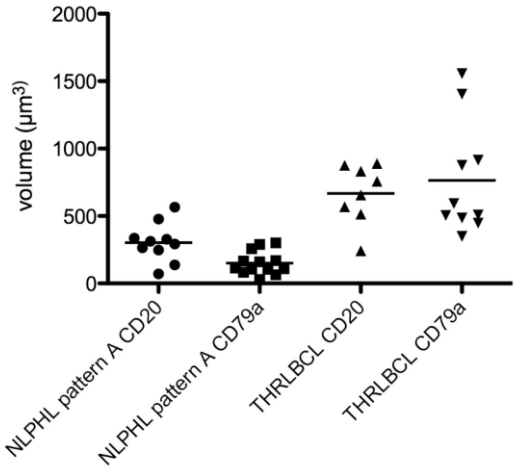


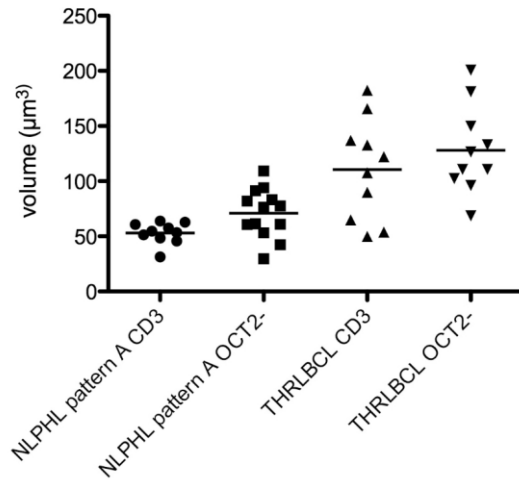
Supplementary Figures



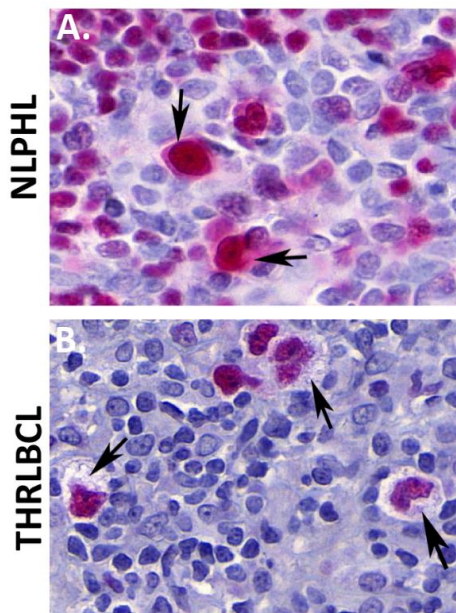
Supplementary Figure S1. Quantification of nuclear area of reactive T cells (OCT2-negative lymphocytes) in different growth patterns (A, C, D and E) of NLPHL and THRLBCL in 2D.



Supplementary Figure S2. Quantification of the 3D volume of the tumor cell body in NLPHL pattern A and THRLBCL. Tumor cell volumes were independently quantified in CD20 and CD79a immunostainings yielding comparable results.



Supplementary Figure S3. Quantification of the 3D nuclear volume of T lymphocytes in NLPHL pattern A and THRLBCL. T lymphocyte nuclear volumes were independently quantified in either OCT2 immunostaining, choosing lymphocytes with OCT2-negative nuclei, or in CD3-immunostaining, choosing positively labelled cells.



Supplementary Figure S4. Examples of 2D histological slides of NLPHL pattern A and THRLBCL with OCT2 staining (40x magnification).

- Examples of LP cells in NLPHL pattern A with a scant, moderately OCT2⁺ cytoplasm (highlighted by arrows).
- Examples of tumor cells of THRLBCL with a broad and pale, vacuolated cytoplasm hinting at cellular swelling (highlighted by arrows).