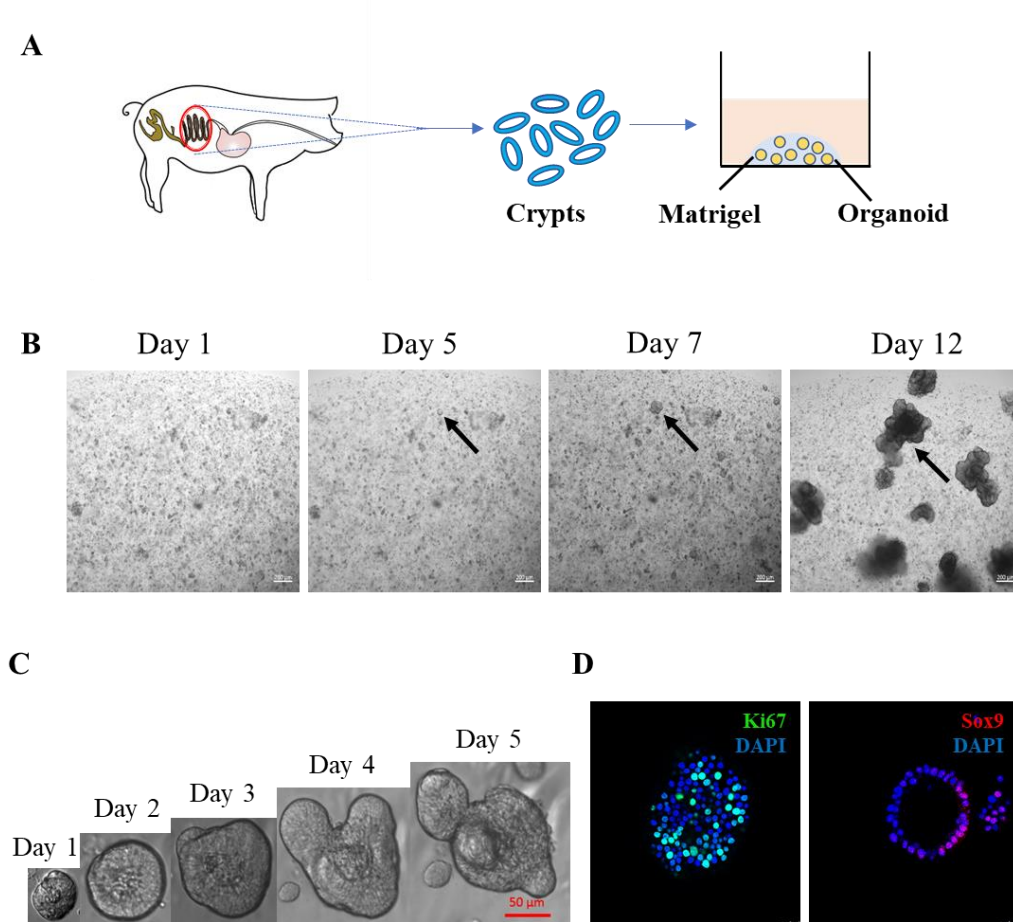


**Fig. S1 Development of porcine intestinal 3D organoids.** (A) Graphical representation for isolation of porcine intestinal crypts and culture of intestinal organoids. (B) Differentiation of intestinal organoids from ileum crypts and formation of crypt-villus structure (bar = 200  $\mu$ m), arrow: organoids. (C) Time course of organoid development after passaging (bar = 50  $\mu$ m). (D) Evaluation of proliferation ability (Ki67) and stemness (Sox9) for 3D organoids cultured for 5 days.



**Fig. S2 Porcine intestinal organoids monolayer is susceptible to TGEV.** Co-localization analysis of TGEV N with Villin<sup>+</sup> cells and Ki67<sup>+</sup> cells in Control group and TGEV group.

