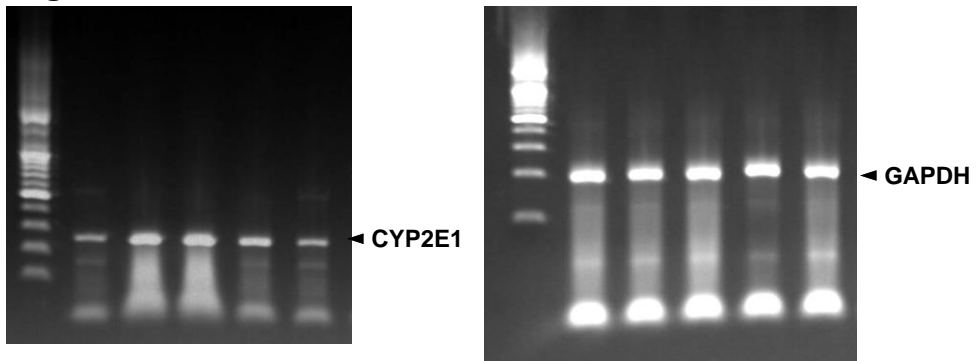


Supplementary Figure 1. Ethanol-induced CYP2E1 activity and oxidative stress is suppressed by turmeric extract. (Figure 4a)

Figure 4a



Supplementary Figure 2. Influence of turmeric extract on the activity of antioxidant enzymes in alcohol-induced SD rats. (Figure 6a, Figure 6b, and Figure 6c)

Figure 6a

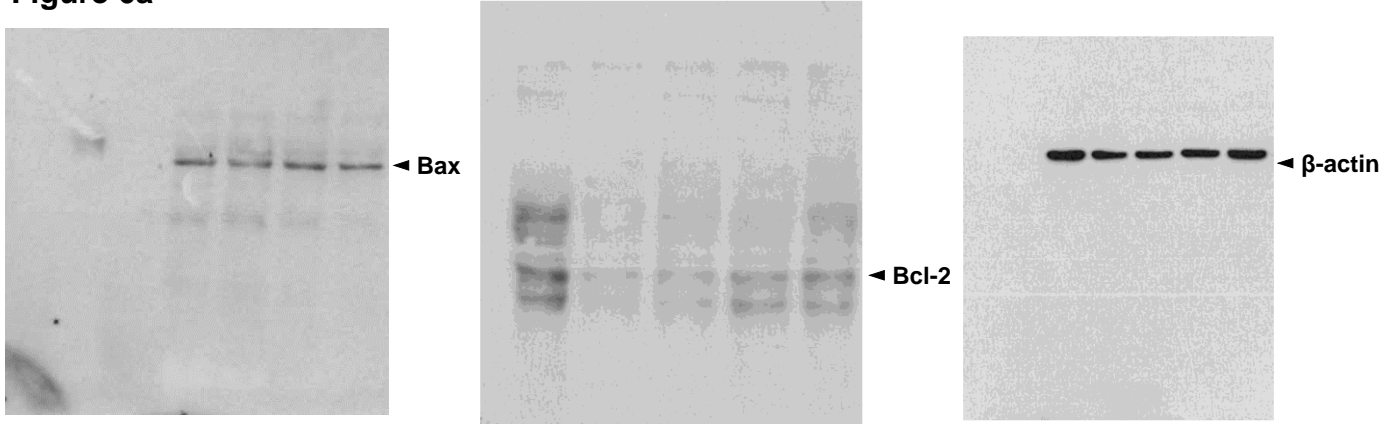


Figure 6b

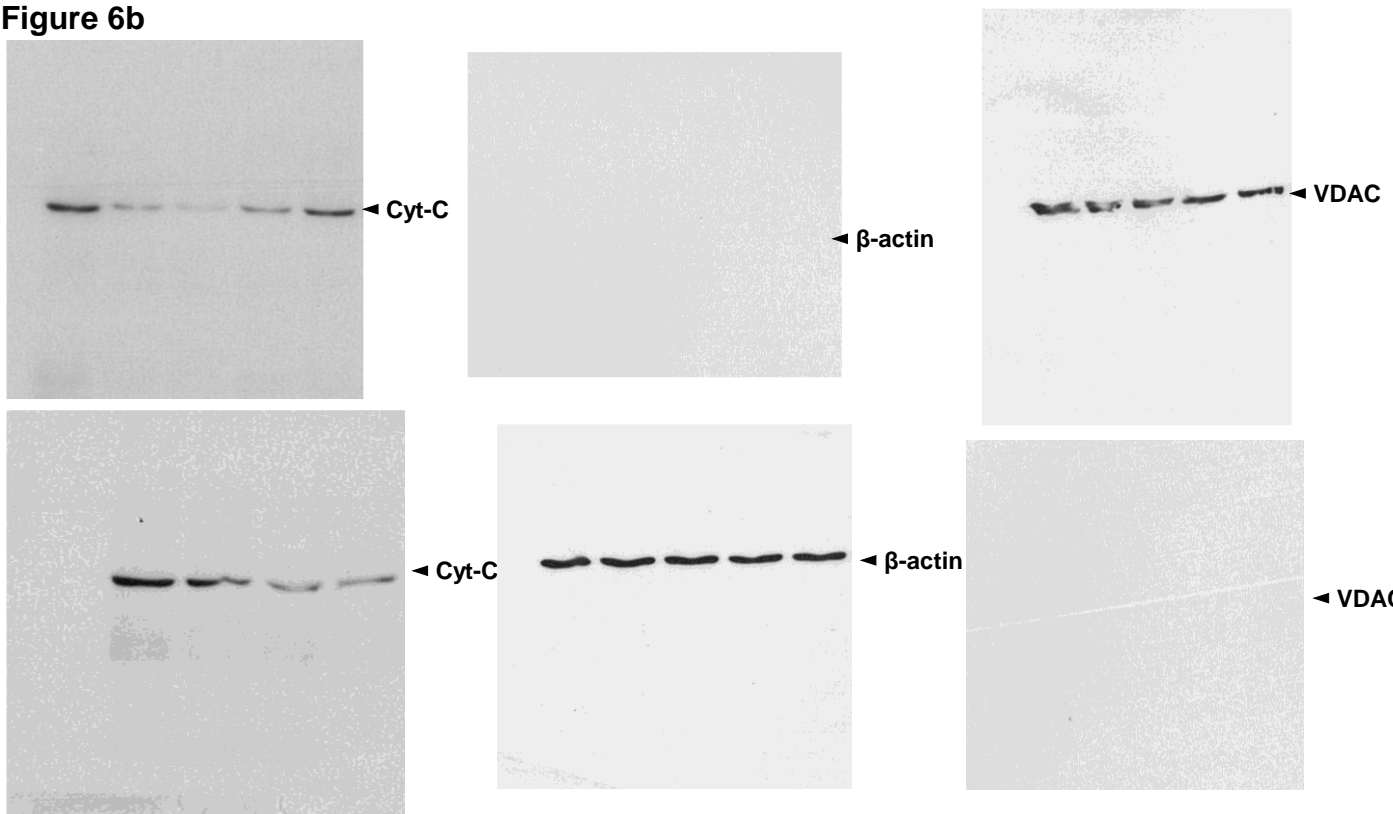


Figure 6c

