

Supplementary Tables and Figures

Table S1: Balance in covariates before and after 10 to 1 matching for complete cases measured by standardized mean difference (SMD). Mean \pm SD and N (%) are presented. P-values generated by ANOVA or chi-square tests. Matching led to good balance with SMDs < 0.1

	Gest. HTN				Gest. DM				PE/E			
	No	Yes	P-value	SMD	No	Yes	P-value	SMD	No	Yes	P-value	SMD
<i>Before Matching</i>												
N	1466	44			1475	35			1466	44		
Sys BP	118.16 \pm 12.94	121.75 \pm 15.08	0.072	0.255	118.29 \pm 13.06	117.23 \pm 11.02	0.633	0.088	118.18 \pm 12.98	121.25 \pm 13.88	0.123	0.229
Dias. BP	71.96 \pm 9.59	74.86 \pm 10.03	0.048	0.296	72.10 \pm 9.62	69.51 \pm 8.86	0.115	0.280	72.00 \pm 9.65	73.52 \pm 8.00	0.300	0.172
Glucose	92.64 \pm 14.64	89.91 \pm 11.17	0.220	0.210	92.51 \pm 14.61	94.91 \pm 12.16	0.334	0.179	92.64 \pm 14.64	90.18 \pm 11.12	0.271	0.189
Year	1997.06 \pm 12.50	1992.32 \pm 13.10	0.013	0.370	1996.86 \pm 12.60	1999.43 \pm 9.56	0.231	0.230	1996.93 \pm 12.53	1996.50 \pm 12.92	0.823	0.034
Age	42.70 \pm 10.50	41.25 \pm 8.78	0.366	0.150	42.65 \pm 10.49	43.01 \pm 8.88	0.840	0.037	42.69 \pm 10.49	41.47 \pm 9.32	0.445	0.123
BMI	25.67 \pm 4.43	26.93 \pm 5.87	0.066	0.243	25.68 \pm 4.48	26.82 \pm 4.69	0.137	0.249	25.71 \pm 4.48	25.78 \pm 4.56	0.914	0.016
White race	1396 (95.2%)	40 (90.9%)	0.341	0.171	1401 (95.0%)	35 (100.0%)	0.336	0.325	1396 (95.2%)	40 (90.9%)	0.341	0.171
Blood relation	1066 (72.7%)	34 (77.3%)	0.619	0.105	1075 (72.9%)	25 (71.4%)	1.000	0.032	1064 (72.6%)	36 (81.8%)	0.236	0.222
Creatinine	0.81 \pm 0.12	0.79 \pm 0.10	0.388	0.142	0.81 \pm 0.12	0.80 \pm 0.10	0.868	0.030	0.81 \pm 0.12	0.82 \pm 0.13	0.429	0.119
Family hx of htn	532 (36.3%)	17 (38.6%)	0.873	0.049	536 (36.3%)	13 (37.1%)	1.000	0.017	527 (35.9%)	22 (50.0%)	0.080	0.287
Family hx of dm	716 (48.8%)	24 (54.5%)	0.553	0.114	718 (48.7%)	22 (62.9%)	0.137	0.288	717 (48.9%)	23 (52.3%)	0.774	0.067
Family hx of cvd	506 (34.5%)	18 (40.9%)	0.473	0.132	511 (34.6%)	13 (37.1%)	0.899	0.052	503 (34.3%)	21 (47.7%)	0.093	0.275
Family hx of kid. dz	967 (66.0%)	29 (65.9%)	1.000	0.001	972 (65.9%)	24 (68.6%)	0.881	0.057	965 (65.8%)	31 (70.5%)	0.633	0.099
Smoked	383 (26.1%)	14 (31.8%)	0.502	0.126	388 (26.3%)	9 (25.7%)	1.000	0.013	386 (26.3%)	11 (25.0%)	0.981	0.030
Predonation pregs.	2.93 \pm 1.66	3.50 \pm 2.16	0.025	0.298	2.93 \pm 1.67	3.51 \pm 2.09	0.042	0.310	2.94 \pm 1.67	3.16 \pm 1.99	0.385	0.122
<i>After Matching</i>												
N	440	44			350	35			440	44		
Sys BP	121.88 \pm 13.51	121.75 \pm 15.08	0.953	0.009	116.88 \pm 12.93	117.23 \pm 11.02	0.878	0.029	121.02 \pm 13.34	121.25 \pm 13.88	0.912	0.017
Dias. BP	74.56 \pm 9.93	74.86 \pm 10.03	0.846	0.031	69.81 \pm 9.71	69.51 \pm 8.86	0.861	0.032	73.19 \pm 9.46	73.52 \pm 8.00	0.823	0.038
Glucose	90.32 \pm 12.34	89.91 \pm 11.17	0.833	0.035	95.82 \pm 19.84	94.91 \pm 12.16	0.791	0.055	89.34 \pm 10.98	90.18 \pm 11.12	0.629	0.076
Year	1993.22 \pm 13.66	1992.32 \pm 13.10	0.675	0.068	1999.05 \pm 12.45	1999.43 \pm 9.56	0.861	0.034	1996.31 \pm 13.22	1996.50 \pm 12.92	0.927	0.015
Age	41.12 \pm 10.39	41.25 \pm 8.78	0.937	0.013	42.94 \pm 9.87	43.01 \pm 8.88	0.969	0.007	42.05 \pm 10.36	41.47 \pm 9.32	0.724	0.058
BMI	26.79 \pm 5.11	26.93 \pm 5.87	0.864	0.025	26.97 \pm 4.90	26.82 \pm 4.69	0.864	0.031	25.62 \pm 4.59	25.78 \pm 4.56	0.829	0.034
White race	398 (90.5%)	40 (90.9%)	1.000	0.016	350 (100.0%)	35 (100.0%)		<0.001	400 (90.9%)	40 (90.9%)	1.000	<0.001
Blood relation	329 (74.8%)	34 (77.3%)	0.855	0.059	252 (72.0%)	25 (71.4%)	1.000	0.013	357 (81.1%)	36 (81.8%)	1.000	0.018
Creatinine	0.79 \pm 0.12	0.79 \pm 0.10	0.900	0.021	0.80 \pm 0.12	0.80 \pm 0.10	0.855	0.034	0.82 \pm 0.12	0.82 \pm 0.13	0.805	0.039
Family hx of htn	169 (38.4%)	17 (38.6%)	1.000	0.005	131 (37.4%)	13 (37.1%)	1.000	0.006	221 (50.2%)	22 (50.0%)	1.000	0.005
Family hx of dm	237 (53.9%)	24 (54.5%)	1.000	0.014	217 (62.0%)	22 (62.9%)	1.000	0.018	233 (53.0%)	23 (52.3%)	1.000	0.014
Family hx of cvd	176 (40.0%)	18 (40.9%)	1.000	0.019	136 (38.9%)	13 (37.1%)	0.987	0.035	209 (47.5%)	21 (47.7%)	1.000	0.005
Family hx of kid. dz	282 (64.1%)	29 (65.9%)	0.940	0.038	244 (69.7%)	24 (68.6%)	1.000	0.025	313 (71.1%)	31 (70.5%)	1.000	0.015
Smoked	131 (29.8%)	14 (31.8%)	0.913	0.044	82 (23.4%)	9 (25.7%)	0.924	0.053	112 (25.5%)	11 (25.0%)	1.000	0.010
Predonation pregs.	3.41 \pm 2.09	3.50 \pm 2.16	0.779	0.044	3.47 \pm 2.04	3.51 \pm 2.09	0.906	0.021	3.25 \pm 1.90	3.16 \pm 1.99	0.769	0.046

Table S2: Representative balance in covariates before and after 10 to 1 matching from 1 imputed data set. SMD= standardized mean difference. Ave. SMD= average SMD across 30 imputations. Mean \pm SD and N (%) are presented. P-values generated by ANOVA or chi-square tests. Matching led to good balance with average SMDs < 0.10.

	Gest. HTN					Gest. DM					PE/E				
	No	Yes	P-value	SMD	Ave. SMD	No	Yes	P-value	SMD	Ave. SMD	No	Yes	P-value	SMD	Ave. SMD
	<i>Before Matching</i>														
N	1813	49				1819	43				1814	48			
Sys BP	118.06 \pm 13.06	121.02 \pm 15.12	0.119	0.210	0.209	118.14 \pm 13.16	118.21 \pm 11.63	0.971	0.006	0.021	118.06 \pm 13.11	121.06 \pm 13.38	0.118	0.227	0.223
Dias. BP	71.90 \pm 9.71	75.73 \pm 10.74	0.007	0.375	0.376	72.04 \pm 9.77	70.23 \pm 8.90	0.229	0.194	0.191	71.95 \pm 9.80	73.71 \pm 8.01	0.219	0.196	0.197
Glucose	92.31 \pm 14.33	90.37 \pm 11.72	0.347	0.148	0.176	92.23 \pm 14.31	93.23 \pm 12.37	0.650	0.075	0.113	92.33 \pm 14.33	89.42 \pm 11.26	0.162	0.226	0.19
Year	1996.72 \pm 12.96	1990.92 \pm 13.79	0.002	0.433	0.433	1996.51 \pm 13.09	1999.14 \pm 9.13	0.190	0.233	0.233	1996.58 \pm 13.02	1996.19 \pm 13.05	0.838	0.030	0.03
Age	42.44 \pm 10.56	40.45 \pm 9.56	0.192	0.198	0.198	42.37 \pm 10.58	43.12 \pm 8.65	0.647	0.077	0.077	42.41 \pm 10.57	41.45 \pm 8.98	0.532	0.098	0.098
BMI	25.66 \pm 4.44	27.22 \pm 6.00	0.017	0.295	0.296	25.67 \pm 4.47	27.01 \pm 5.49	0.053	0.269	0.28	25.69 \pm 4.49	26.12 \pm 4.76	0.509	0.094	0.095
White race	1719 (94.8%)	45 (91.8%)	0.550	0.120	0.117	1721 (94.6%)	43 (100.0%)	0.223	0.337	0.339	1720 (94.8%)	44 (91.7%)	0.524	0.126	0.123
Blood relation	1315 (72.5%)	39 (79.6%)	0.351	0.166	0.166	1323 (72.7%)	31 (72.1%)	1.000	0.014	0.014	1314 (72.4%)	40 (83.3%)	0.131	0.265	0.265
Creatinine	0.81 \pm 0.12	0.80 \pm 0.11	0.494	0.103	0.101	0.81 \pm 0.12	0.80 \pm 0.11	0.625	0.081	0.079	0.81 \pm 0.12	0.83 \pm 0.12	0.330	0.142	0.144
Fam. hx of htn	659 (36.3%)	20 (40.8%)	0.624	0.092	0.080	664 (36.5%)	15 (34.9%)	0.954	0.034	0.041	654 (36.1%)	25 (52.1%)	0.034	0.327	0.283
Fam. hx of dm	896 (49.4%)	25 (51.0%)	0.939	0.032	0.028	896 (49.3%)	25 (58.1%)	0.319	0.179	0.193	895 (49.3%)	26 (54.2%)	0.607	0.097	0.093
Fam. hx of cvd	632 (34.9%)	22 (44.9%)	0.193	0.206	0.146	639 (35.1%)	15 (34.9%)	1.000	0.005	0.042	630 (34.7%)	24 (50.0%)	0.042	0.313	0.26
Fam. hx of kid. dz	1210 (66.7%)	34 (69.4%)	0.814	0.057	0.053	1214 (66.7%)	30 (69.8%)	0.800	0.065	0.063	1210 (66.7%)	34 (70.8%)	0.657	0.089	0.122
Smoked	470 (25.9%)	15 (30.6%)	0.567	0.104	0.117	475 (26.1%)	10 (23.3%)	0.806	0.066	0.066	474 (26.1%)	11 (22.9%)	0.738	0.075	0.074
Predonation pregs.	2.94 \pm 1.66	3.49 \pm 2.09	0.023	0.291	0.299	2.94 \pm 1.66	3.42 \pm 1.94	0.066	0.262	0.262	2.95 \pm 1.66	3.23 \pm 1.94	0.250	0.156	0.156
	<i>After Matching</i>														
N	490	49				430	43				480	48			
Sys BP	121.13 \pm 12.82	121.02 \pm 15.12	0.954	0.008	0.025	117.89 \pm 12.23	118.21 \pm 11.63	0.869	0.027	0.031	120.61 \pm 13.21	121.06 \pm 13.38	0.820	0.034	0.033
Dias. BP	75.24 \pm 10.02	75.73 \pm 10.74	0.745	0.047	0.038	70.55 \pm 10.12	70.23 \pm 8.90	0.845	0.033	0.024	73.00 \pm 9.83	73.71 \pm 8.01	0.629	0.079	0.025
Glucose	90.71 \pm 11.48	90.37 \pm 11.72	0.841	0.030	0.038	93.39 \pm 13.48	93.23 \pm 12.37	0.943	0.012	0.028	89.51 \pm 10.62	89.42 \pm 11.26	0.956	0.008	0.021
Year	1991.40 \pm 13.86	1990.92 \pm 13.79	0.815	0.035	0.029	1998.80 \pm 11.90	1999.14 \pm 9.13	0.857	0.032	0.048	1994.65 \pm 13.49	1996.19 \pm 13.05	0.451	0.116	0.031
Age	40.53 \pm 10.21	40.45 \pm 9.56	0.959	0.008	0.031	42.90 \pm 10.10	43.12 \pm 8.65	0.894	0.023	0.038	41.10 \pm 10.01	41.45 \pm 8.98	0.817	0.037	0.034
BMI	26.85 \pm 5.24	27.22 \pm 6.00	0.650	0.064	0.053	26.88 \pm 4.96	27.01 \pm 5.49	0.871	0.025	0.022	25.77 \pm 4.63	26.12 \pm 4.76	0.622	0.074	0.036
Blood relation	387 (79.0%)	39 (79.6%)	1.000	0.015	0.023	310 (72.1%)	31 (72.1%)	1.000	<0.001	0.031	411 (85.6%)	40 (83.3%)	0.830	0.063	0.039
White race	445 (90.8%)	45 (91.8%)	1.000	0.036	0.027	430 (100.0%)	43 (100.0%)	<0.001	0.001	0.001	447 (93.1%)	44 (91.7%)	0.936	0.055	0.031
Creatinine	0.80 \pm 0.12	0.80 \pm 0.11	0.799	0.040	0.033	0.80 \pm 0.13	0.80 \pm 0.11	0.907	0.020	0.034	0.84 \pm 0.14	0.83 \pm 0.12	0.596	0.083	0.026
Fam. hx of htn	190 (38.8%)	20 (40.8%)	0.900	0.042	0.023	141 (32.8%)	15 (34.9%)	0.914	0.044	0.030	241 (50.2%)	25 (52.1%)	0.923	0.038	0.022
Fam. hx of dm	253 (51.6%)	25 (51.0%)	1.000	0.012	0.025	256 (59.5%)	25 (58.1%)	0.988	0.028	0.029	262 (54.6%)	26 (54.2%)	1.000	0.008	0.024
Fam. hx of cvd	226 (46.1%)	22 (44.9%)	0.989	0.025	0.026	128 (29.8%)	15 (34.9%)	0.601	0.110	0.031	232 (48.3%)	24 (50.0%)	0.945	0.033	0.027
Fam. hx of kid. dz	334 (68.2%)	34 (69.4%)	0.988	0.026	0.018	300 (69.8%)	30 (69.8%)	1.000	<0.001	0.028	359 (74.8%)	34 (70.8%)	0.670	0.089	0.03
Smoked	144 (29.4%)	15 (30.6%)	0.988	0.027	0.019	100 (23.3%)	10 (23.3%)	1.000	<0.001	0.031	119 (24.8%)	11 (22.9%)	0.911	0.044	0.026
Predonation pregs.	3.48 \pm 2.13	3.49 \pm 2.09	0.975	0.005	0.024	3.46 \pm 2.04	3.42 \pm 1.94	0.909	0.019	0.023	3.27 \pm 1.90	3.23 \pm 1.94	0.880	0.023	0.026

Table S3: Proportional hazards regression results for time from donation to development of long-term outcomes based on predonation pregnancy complications. The outcomes of donors experiencing a given predonation pregnancy complication were compared to matched donors with predonation pregnancies without the given complication. Cox proportional hazards results for individuals with complete data for matching variables are presented. Donors may be classified into more than 1 predonation pregnancy complication category.

Pregnancy complication	N	HR (95% CI); p-value for outcome				
		HTN	DM	CVD	eGFR<45	eGFR<30
<i>Analysis including individuals with both pre and postdonation pregnancies</i>						
Gestational HTN	44	1.77 (1.18, 2.65); ≤0.01	1.70 (0.72, 4.02); 0.22	1.21 (0.66, 2.24); 0.54	0.70 (0.25, 1.94); 0.49	0.53 (0.06, 4.49); 0.56
Gestational DM	35	1.14 (0.61, 2.14); 0.68	2.95 (1.28, 6.80); ≤0.01	0.84 (0.20, 3.56); 0.82	1.23 (0.54, 2.79); 0.62	2.28 (0.48, 10.89); 0.30
Preeclampsia/ Eclampsia	44	0.91 (0.52, 1.60); 0.74	1.60 (0.58, 4.42); 0.37	1.83 (0.93, 3.59); 0.08	1.01 (0.41, 2.46); 0.98	0.84 (0.10, 7.17); 0.88
<i>Analysis restricted to individuals with only predonation pregnancies</i>						
Gestational HTN	38	1.70 (1.08, 2.69); 0.02	1.18 (0.42, 3.33); 0.75	1.31 (0.70, 2.44); 0.40	0.77 (0.29, 2.06); 0.61	0.60 (0.07, 4.85); 0.63
Gestational DM	32	1.18 (0.64, 2.17); 0.59	3.89 (1.65, 9.17); ≤0.01	0.84 (0.21, 3.39); 0.80	1.16 (0.53, 2.51); 0.71	1.08 (0.30, 3.96); 0.91
Preeclampsia/ Eclampsia	39	1.11 (0.62, 1.99); 0.73	0.96 (0.31, 2.99); 0.95	1.74 (0.95, 3.20); 0.07	0.96 (0.38, 2.41); 0.93	0.98 (0.11, 8.75); 0.98

Figure S1: Distribution of propensity scores across 30 imputations before and after matching. In each imputed data set every donor with a given predonation pregnancy complication was matched to 10 control donors based on nearest neighbor propensity score matching.

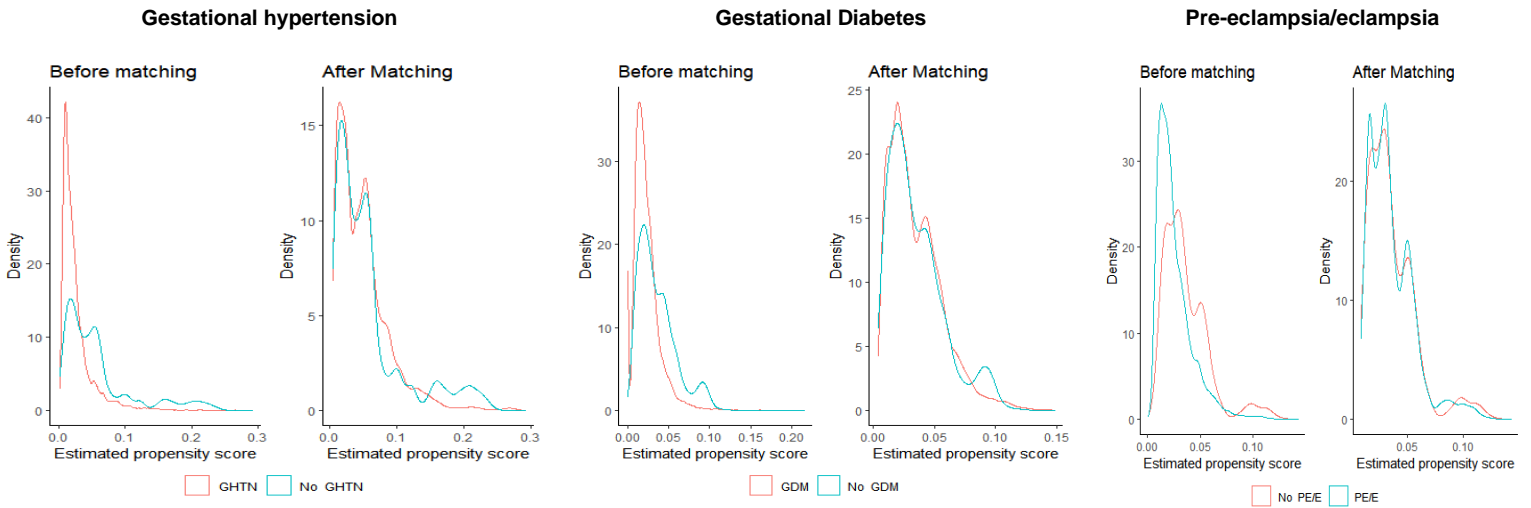
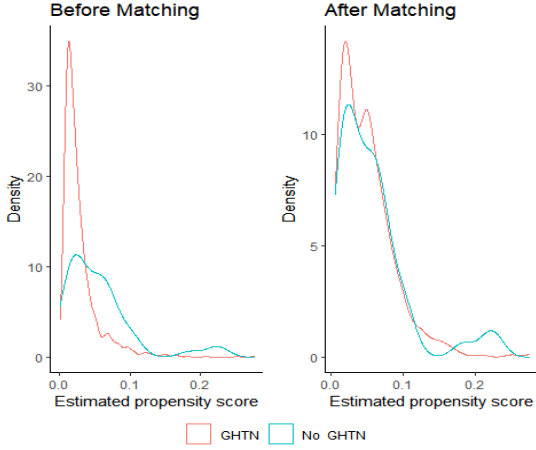
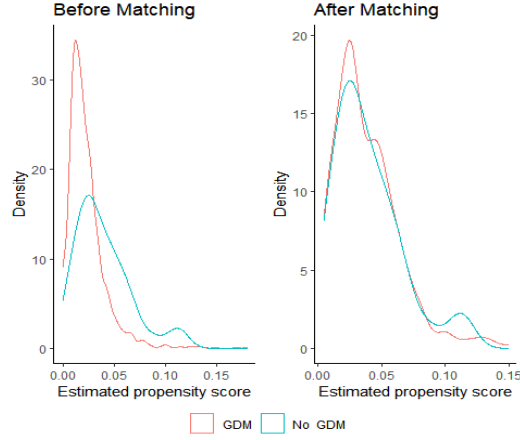


Figure S2: Distribution of propensity scores before and after matching for donors with complete information for matching criteria. Each donor with a given pre-donation pregnancy complication was matched to 10 control donors based on nearest neighbor propensity score matching.

Gestational hypertension



Gestational Diabetes



Pre-eclampsia/eclampsia

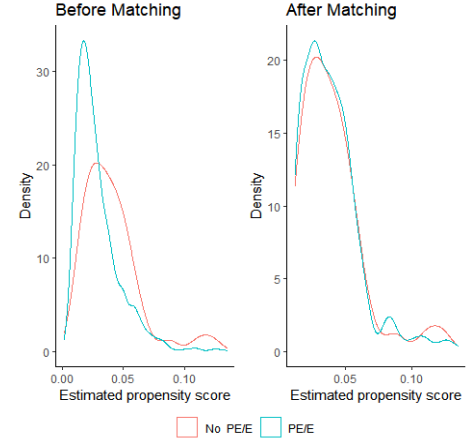
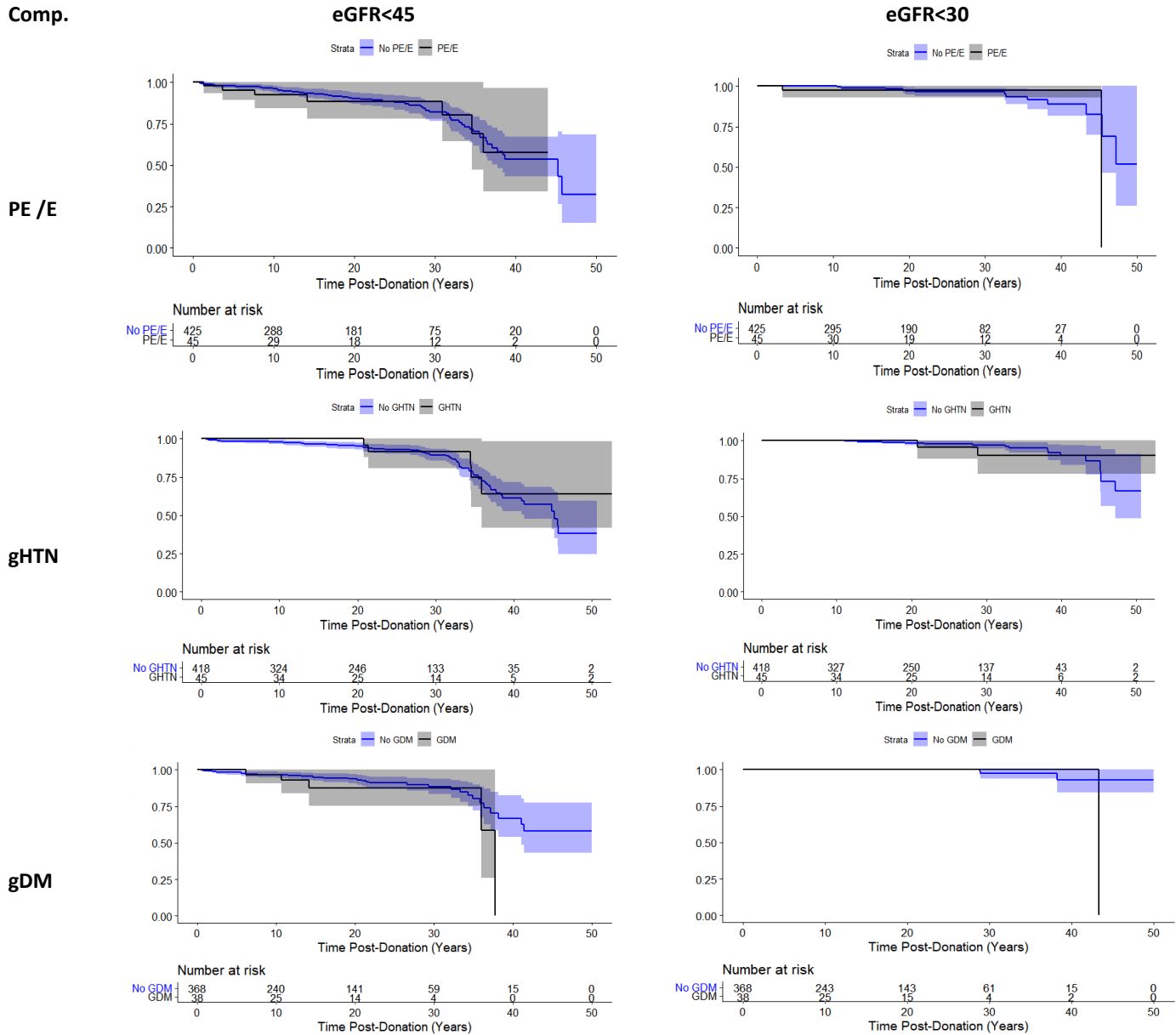
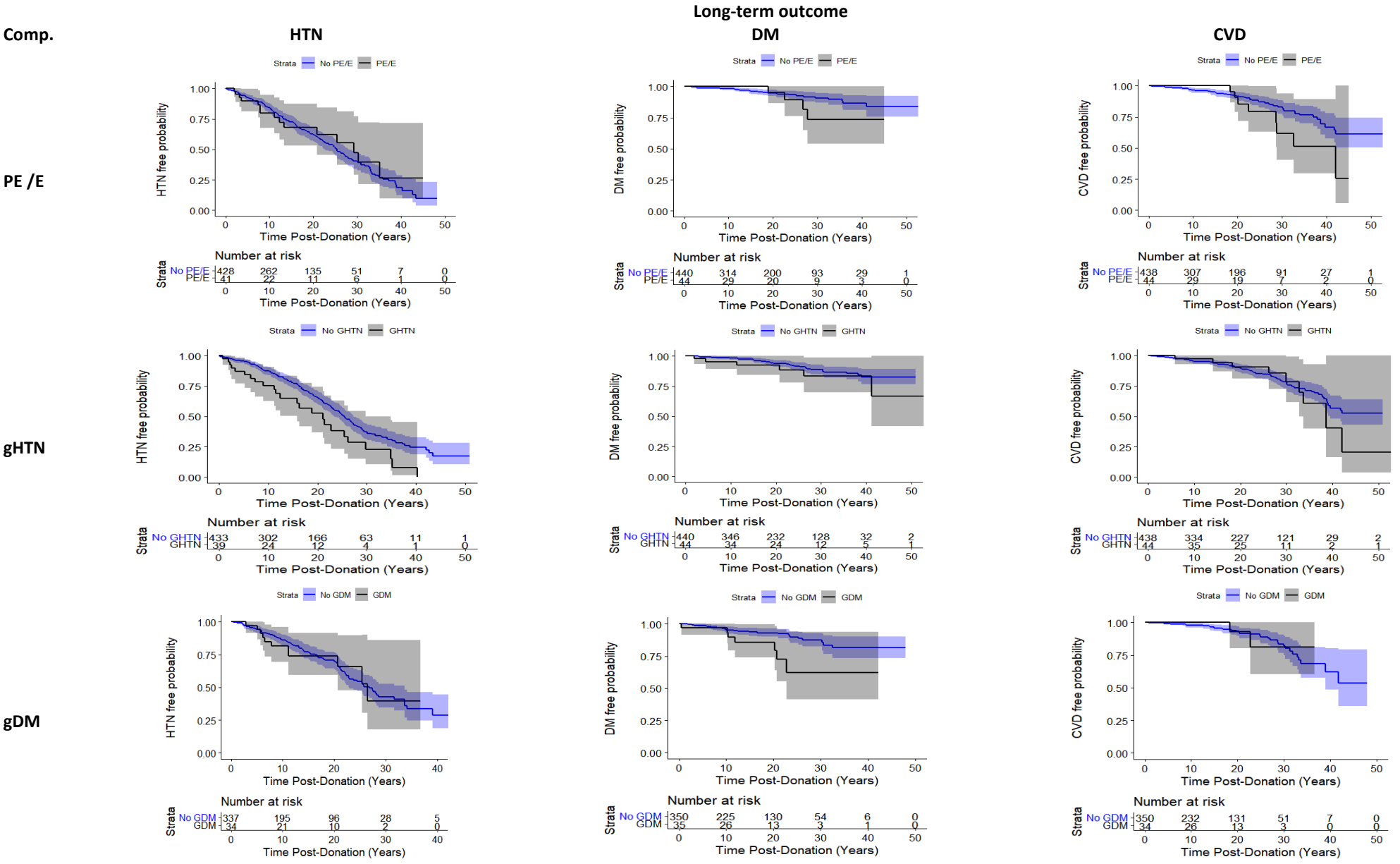


Figure S3: Postdonation reduced-renal function free probability by predonation pregnancy complications. Kaplan Meier Curves with confidence intervals from 1 imputation. Outcomes of donors with a given predonation pregnancy complication were compared to matched donors without the given complication. Donors may be classified into more than 1 predonation pregnancy complication category. Time "0" represents 182 days postdonation.



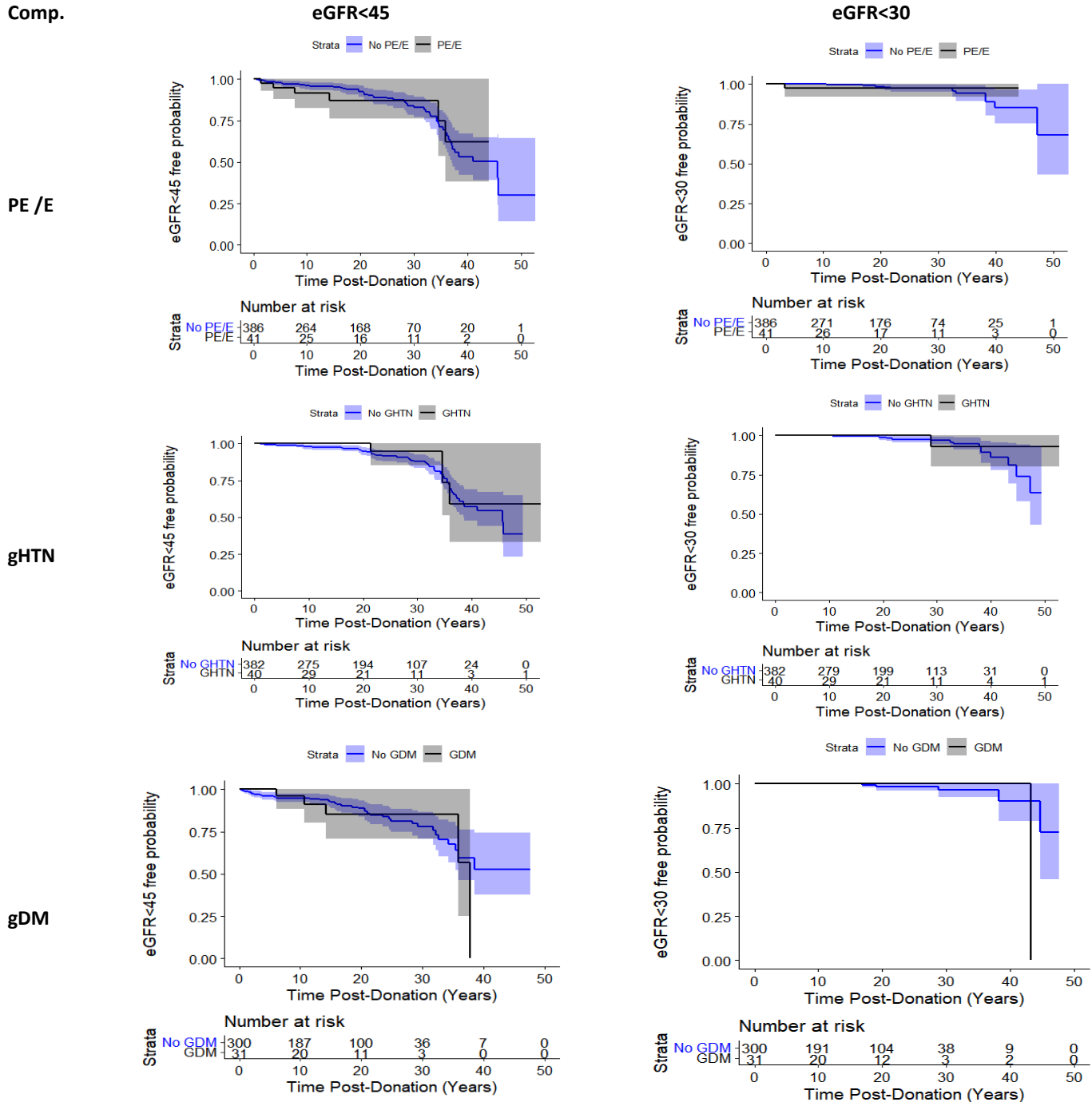
Comp=Complication, PE/E=pre-eclampsia/eclampsia, gHTN= gestational hypertension

Figure S4: Postdonation disease free probability by predonation pregnancy complications. Kaplan Meier Curves with confidence intervals for donors with complete information for matching criteria. Outcomes of donors with a given predonation pregnancy complication were compared to matched donors without the given complication. Donors may be classified into more than 1 predonation pregnancy complication category.



Comp=Complication, PE/E=pre-eclampsia/eclampsia, gHTN= gestational hypertension

Figure S5: Postdonation reduced-renal function free probability by predonation pregnancy complications. Kaplan Meier Curves with confidence intervals for donors with complete information for matching criteria. Outcomes of donors with a given predonation pregnancy complication were compared to matched donors without the given complication. Donors may be classified into more than 1 predonation pregnancy complication category. Time “0” represents 182 days postdonation.



Comp=Complication, PE/E=pre-eclampsia/eclampsia, gHTN= gestational hypertension