

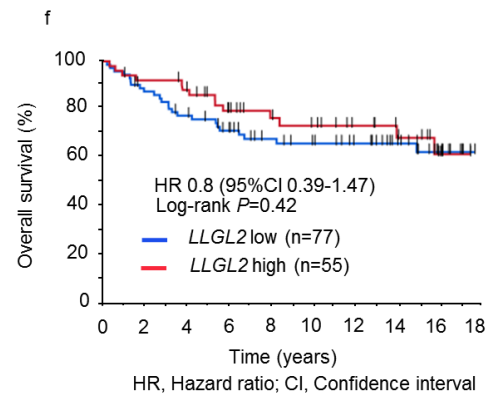
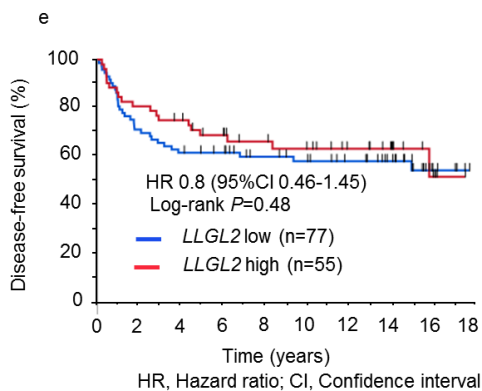
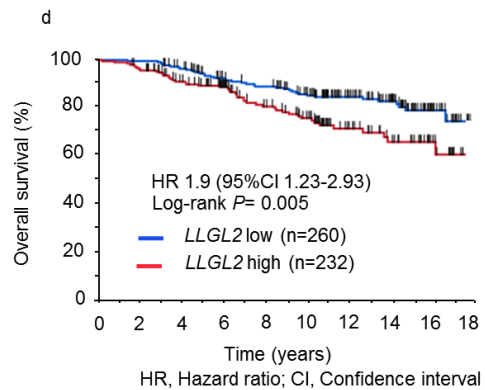
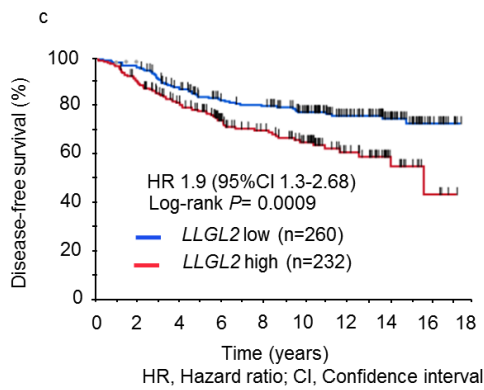
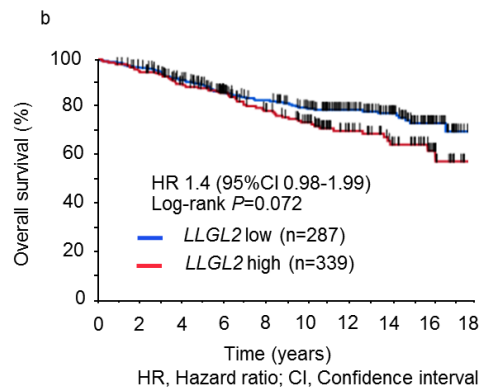
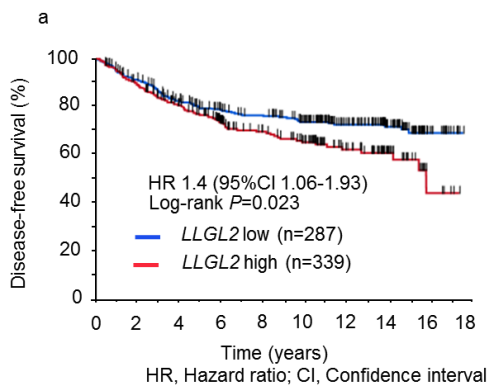
Supplementary Figures

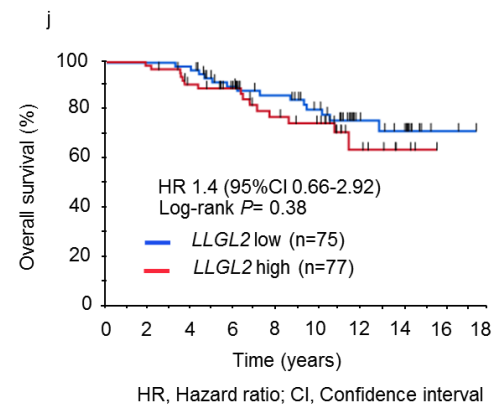
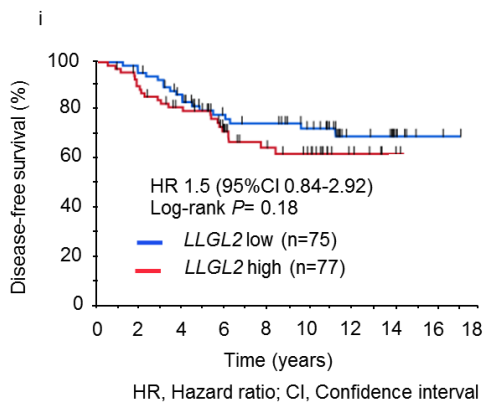
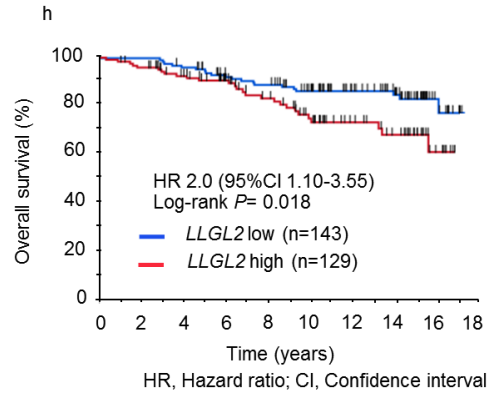
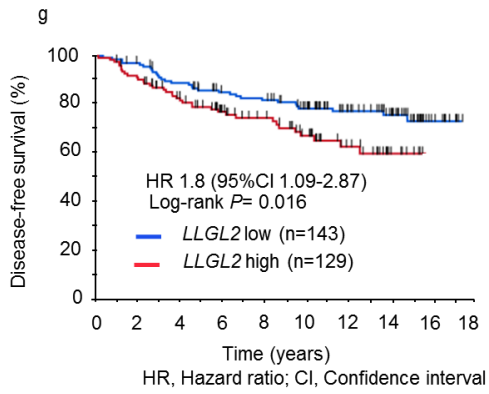
Title: Co-expression effect of LLGL2 and SLC7A5 to predict prognosis in ER α -positive breast cancer

Author's name: Tomoka Hisada, Naoto Kondo, Yumi Wanifuchi-Endo, Satoshi Osaga, Takashi Fujita, Tomoko Asano, Yasuaki Uemoto, Sayaka Nishikawa, Yusuke Katagiri, Mitsuo Terada, Akiko Kato, Hiroshi Sugiura, Katsuhiko Okuda, Hiroyuki Kato, Masayuki Komura, Satoshi Morita, Satoru Takahashi, and Tatsuya Toyama

Supplementary Figure S1

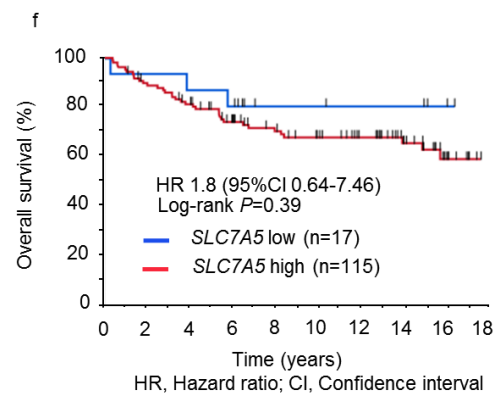
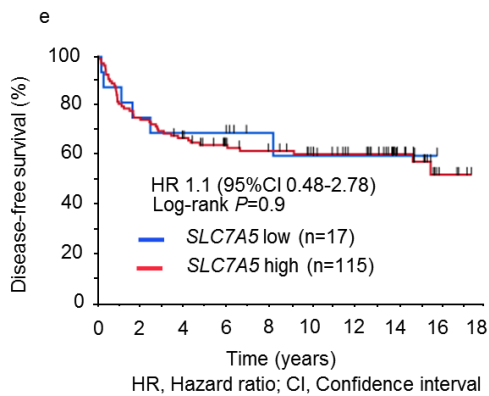
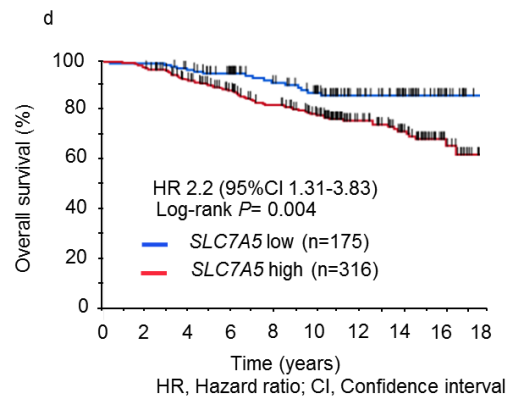
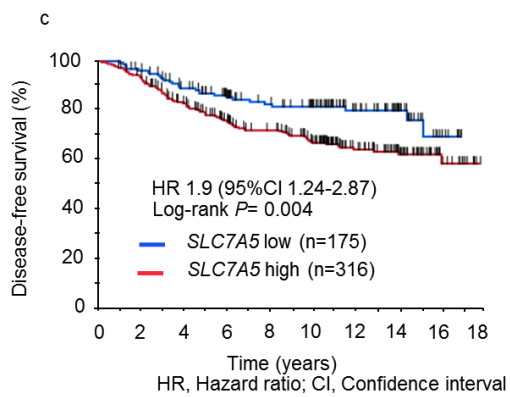
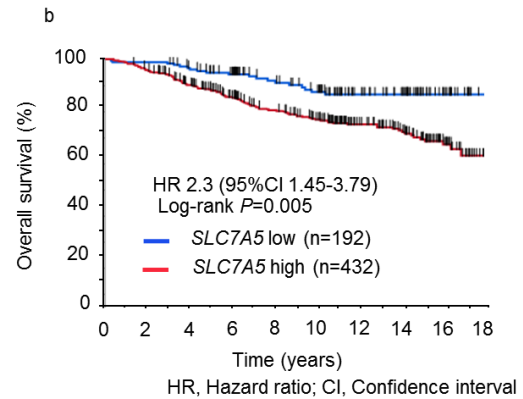
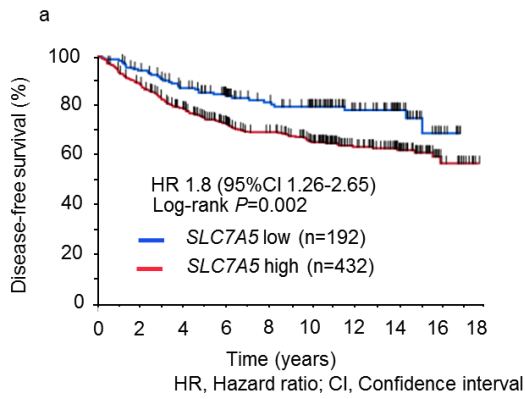
Kaplan–Meier survival curves according to *LLGL2* mRNA expression levels. Graphs show DFS and OS curves for all breast cancer patients (a, b), ER α -positive breast cancer patients (c, d), ER α -negative breast cancer patients (e, f), ER α -positive breast cancer patients receiving adjuvant tamoxifen therapy (g, h), and ER α -positive breast cancer patients without tamoxifen therapy (i, j).

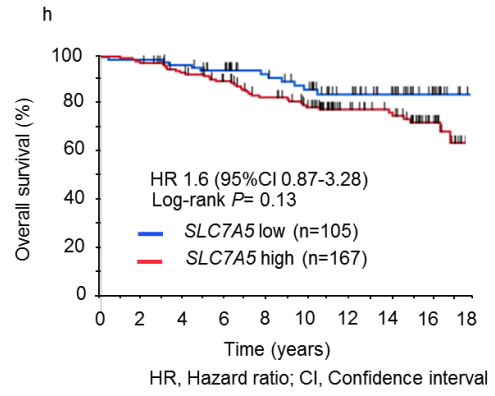
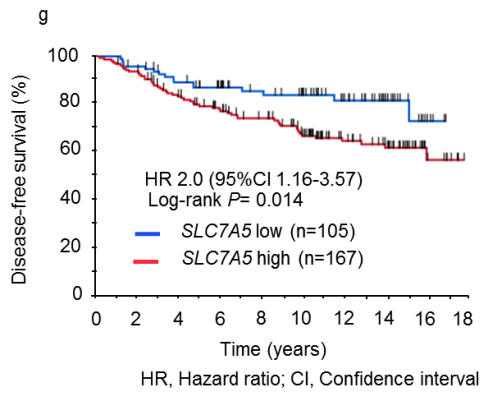




Supplementary Figure S2

Kaplan–Meier survival curves according to *SLC7A5* mRNA expression levels. Graphs show DFS and OS curves for all breast cancer patients (a, b), ER α -positive breast cancer patients (c, d), ER α -negative breast cancer patients (e, f), and ER α -positive breast cancer patients receiving adjuvant tamoxifen therapy (g, h).





Supplementary Figure S3

Kaplan–Meier survival curves according to the combination of *LLGL2* and *SLC7A5* mRNA expression levels. Graphs show DFS and OS curves for ER α -positive breast cancer patients who had not received adjuvant tamoxifen therapy (a, b).

