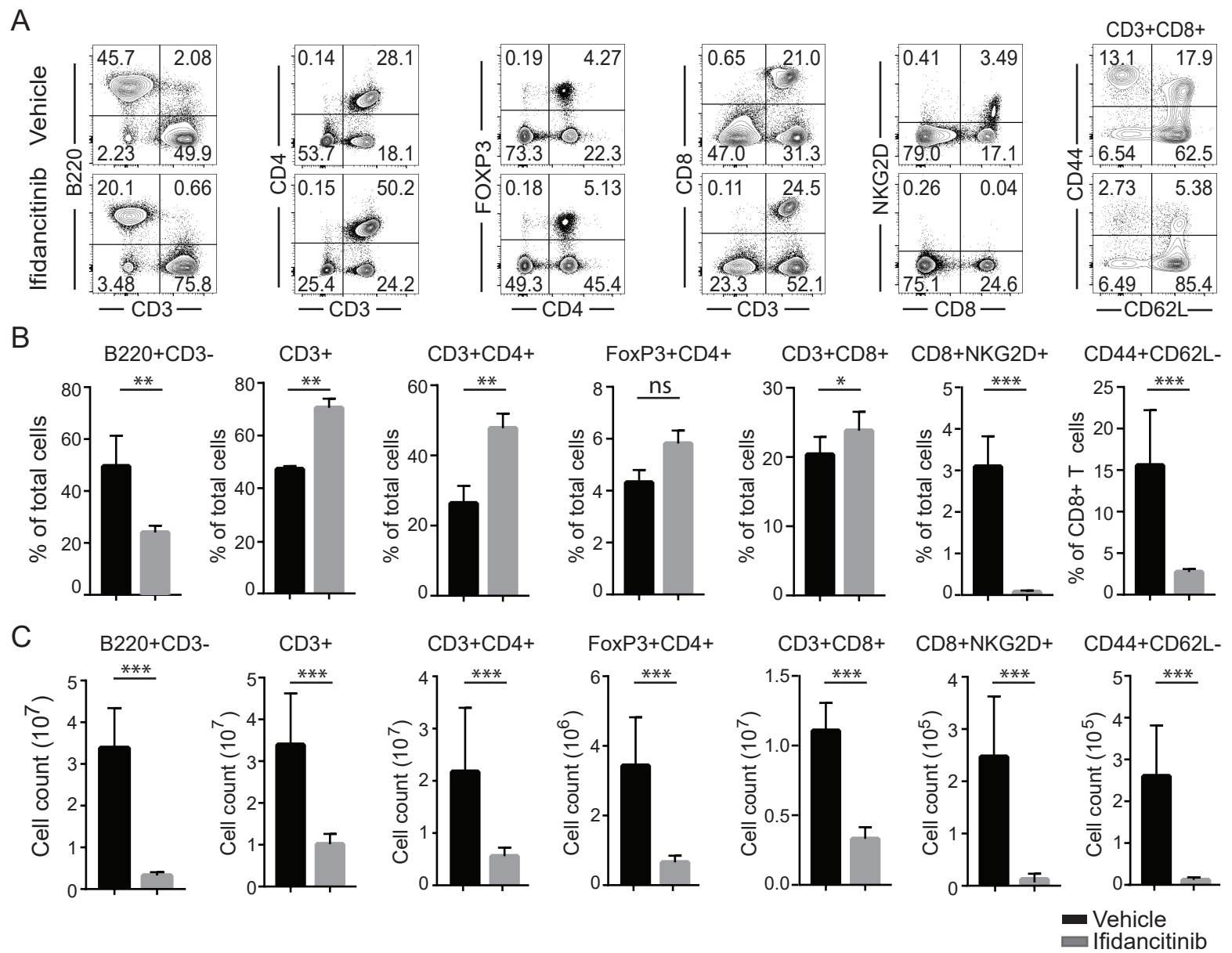


# Supplementary Figure 3



**Supplementary Figure 3.** Effects of Ifidancitinib on immune cell populations in peripheral lymphoid organs. Mice were treated as in **Figure 3**. **(A)** Representative FACS plots of the SDLNs in the viable cell gate were acquired for each sample. **(B)** The absolute numbers and the percentages of lymphocyte subsets in SDLNs are compared between the Ifidancitinib treated group and control. ns indicates not significant, \* $P < 0.05$ , \*\* $P < 0.01$ , \*\*\* $P < 0.001$ . (Unpaired Student t test). Data are representative of two experiments with 8 mice total each group.