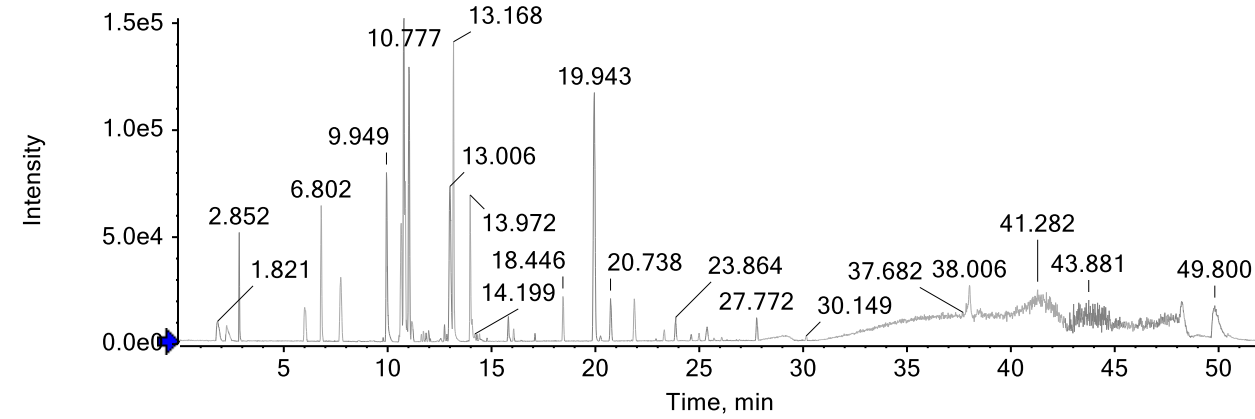
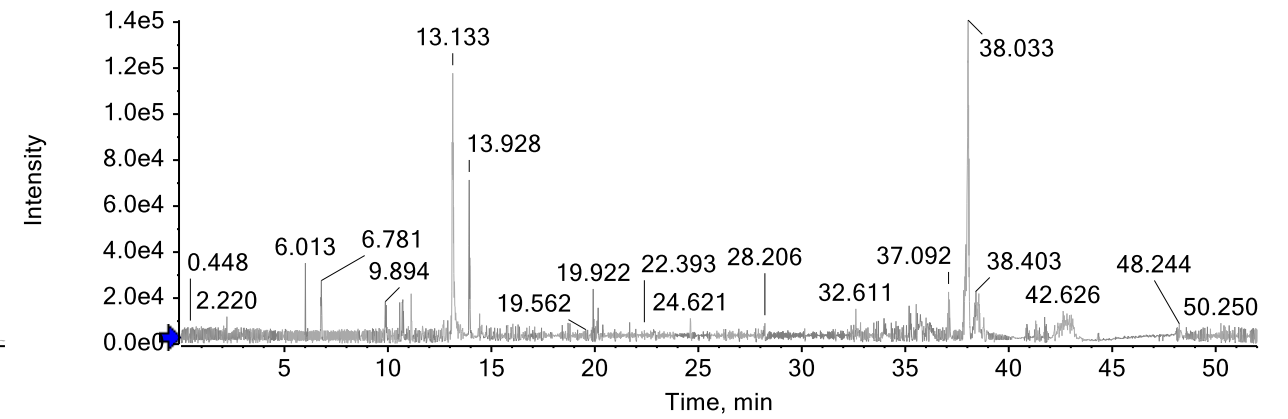


Mixed standards

BPC from 20200811-Mixed Standard-NEG.wiff (sample 1) - Sample001, Experiment 1, -TOF MS (50 - 1500)

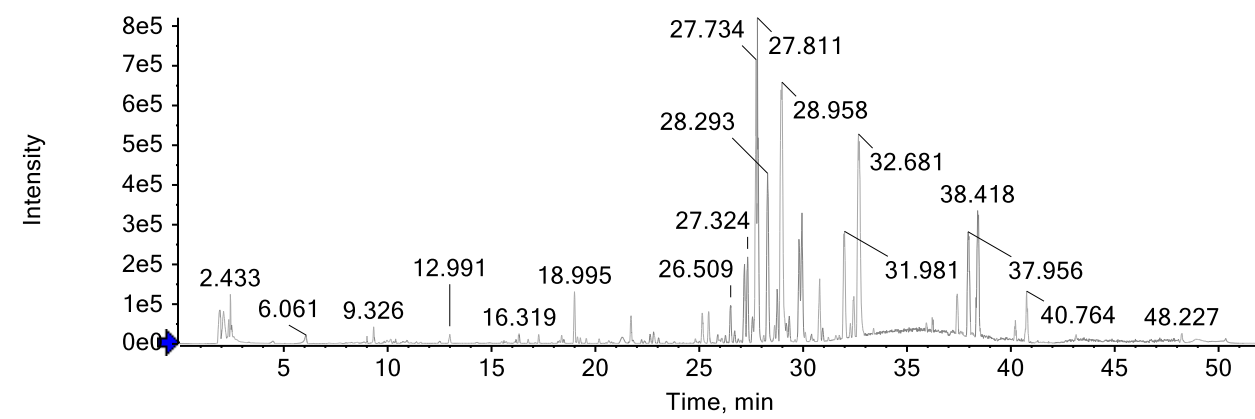


BPC from 20200811-Mixed Standard-POS.wiff (sample 1) - Sample001, Experiment 1, +TOF MS (50 - 1500)



Serum sample after BHGZD gavage(2h)

BPC from 20200811-GZBHT-Serum-2h-NEG.wiff (sample 1) - Sample005, Experiment 1, -TOF MS (50 - 1500)



BPC from 20200811-GZBHT-Serum-2h-POS.wiff (sample 1) - Sample005, Experiment 1, +TOF MS (50 - 1500)

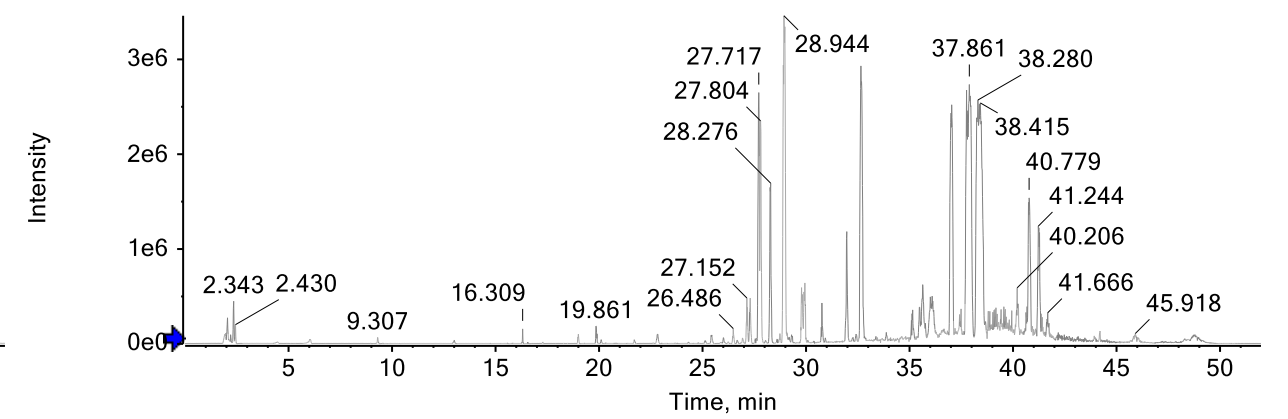


Figure S2. The chromatograms of mixed standards and serum sample after BHGZD gavage.