

Figure S1. SIX1 evaluation by immunohistochemistry in paired NT and T tissue from a (A and B) female and (C and D) male patient with HCC. SIX1 expression level in female HCC tumour tissue is much stronger compared with in males. NT, non-tumour; T, tumour

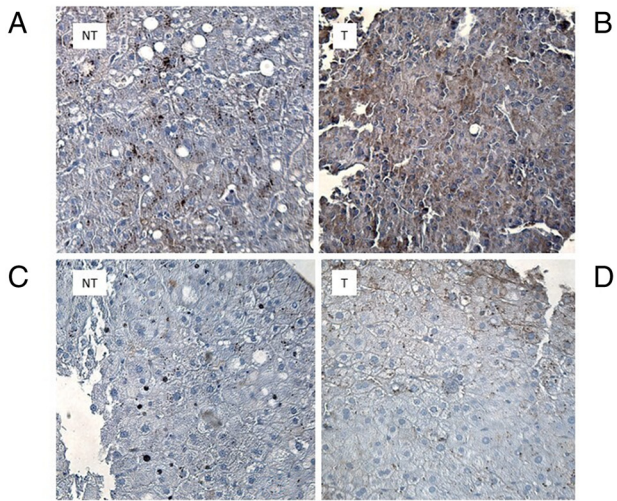


Figure S2. E and T levels in M and F patients with HCC. E and T levels are stratified by (A) sex and by (B) SIX1 median levels. (A) Estradiol and Testosterone were compared by t-test for independent groups between males and females. (B) Estradiol and Testosterone levels were compared by t-test for independent groups according to the median SIX1 levels, separately in the male and in the female group. Estradiol levels were significantly lower in females displaying higher SIX1 median levels. *P<0.001. E, estradiol; T, testosterone; F, female; M, male.

