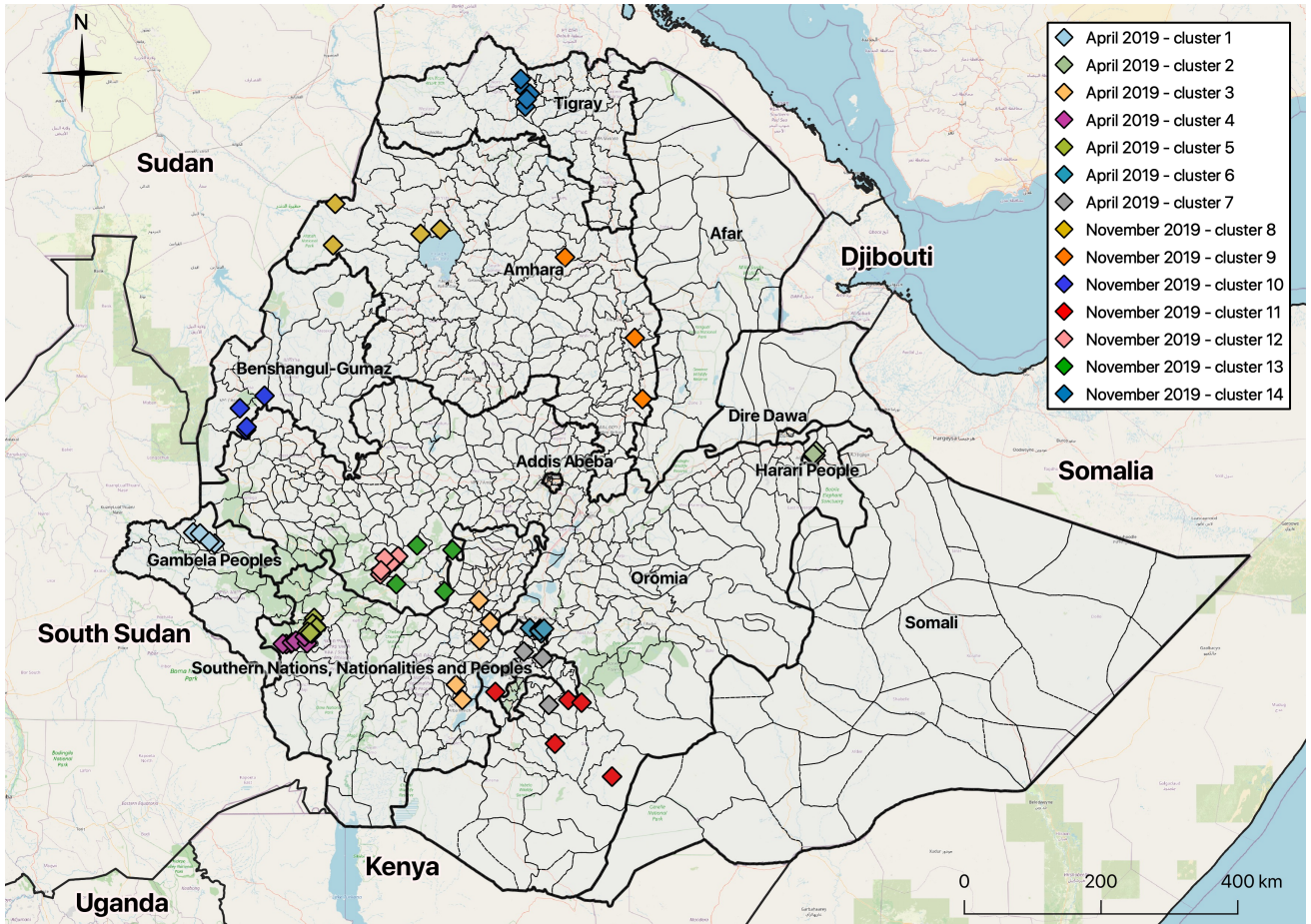


# S1 Info Maps of Ethiopian sentinel schools selected for this study

Maps were made using QGIS (version 3.16.16) (<https://qgis.org/en/site/>). The base layer image was obtained from OpenStreetMap (<http://www.openstreetmap.org>) which is made available under the Open Data Commons Open Database License (<https://www.openstreetmap.org/copyright>). The source of the administrative boundaries was [www.gadm.org/](http://www.gadm.org/).

A



B

