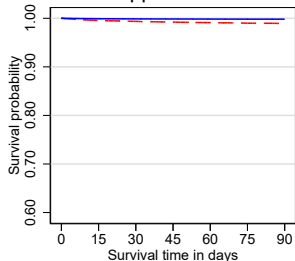


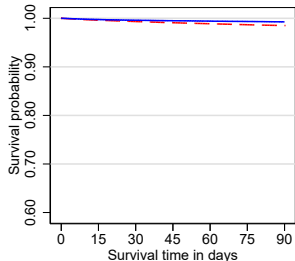
Appendicitis



Number at risk

	0	15	30	45	60	75	90
NES	20,638	20,509	20,456	20,417			
ES	247,506	247,218	247,118	247,051			

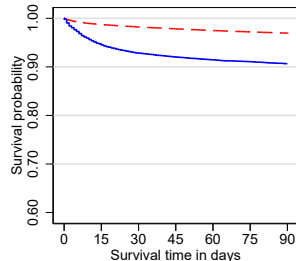
Gallstone disease



Number at risk

	0	15	30	45	60	75	90
NES	188,973	187,734	186,870	186,150			
ES	52,004	51,800	51,704	51,625			

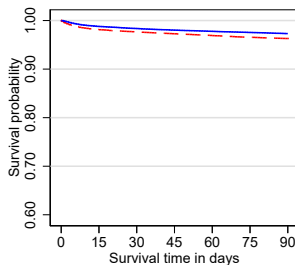
Diverticular disease



Number at risk

	0	15	30	45	60	75	90
NES	123,097	120,920	120,008	119,353			
ES	15,772	14,646	14,427	14,299			

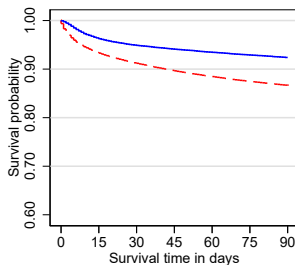
Hernia



Number at risk

	0	15	30	45	60	75	90
NES	43,873	42,847	42,527	42,251			
ES	62,559	61,541	61,173	60,882			

Intestinal obstruction



Number at risk

	0	15	30	45	60	75	90
NES	92,523	84,473	81,904	80,222			
ES	40,550	38,503	37,915	37,468			

--- Non-emergency surgery (NES)

— Emergency surgery (ES)