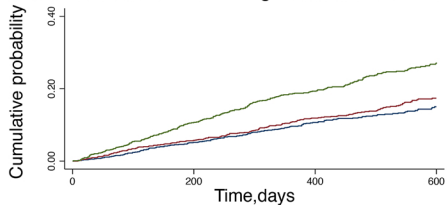


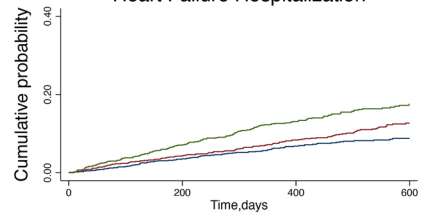
Cardiovascular death or worsening heart failure event



Number at risk			
UA <5.4mg/dL	1020	829	362
UA 5.4-6.7mg/dL	1052	986	817
UA >6.8mg/dL	981	875	700

— UA <5.4mg/dL — UA 5.4-6.7mg/dL
 — UA >6.8mg/dL

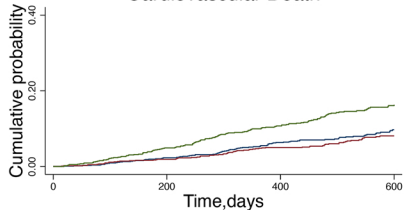
Heart Failure Hospitalization



Number at risk			
UA <5.4mg/dL	1086	1020	829
UA 5.4-6.7mg/dL	1052	986	817
UA >6.8mg/dL	981	875	700

— UA <5.4mg/dL — UA 5.4-6.7mg/dL
 — UA >6.8mg/dL

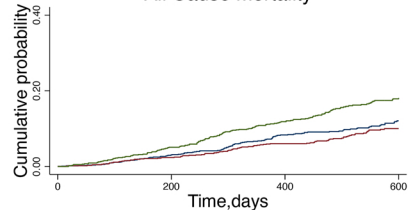
Cardiovascular Death



Number at risk			
UA <5.4mg/dL	1086	1053	878
UA 5.4-6.7mg/dL	1052	1027	882
UA >6.8mg/dL	981	931	768

— UA <5.4mg/dL — UA 5.4-6.7mg/dL
 — UA >6.8mg/dL

All Cause Mortality



Number at risk			
UA <5.4mg/dL	1086	1053	878
UA 5.4-6.7mg/dL	1052	1027	882
UA >6.8mg/dL	981	931	768

— UA <5.4mg/dL — UA 5.4-6.7mg/dL
 — UA >6.8mg/dL