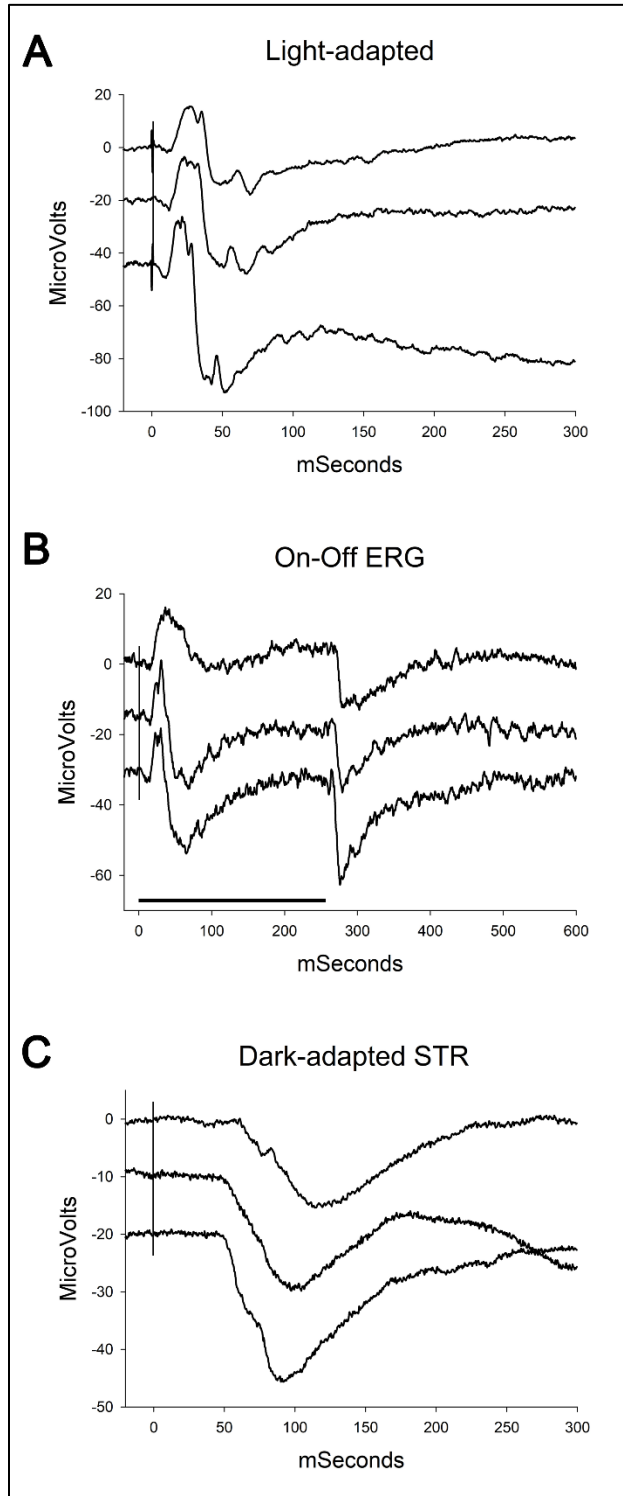


## SUPPORTING INFORMATION

### An unusual inherited electroretinogram feature with an exaggerated negative component in dogs



**Supp Figure 1.** Changes with age in a representative NRE-affected dog.

Representative tracings from a dog with the NRE phenotype are shown at 2, 6, and 12 months of age for the light-adapted (A), On-Off ERG (B), and STR (C) (Dog IV.F). The post b-wave negativity and STR increase with age.