

Global and national trends in the age-specific sex ratio of esophageal cancer and gastric cancer by subtype

Shaoming Wang, Rongshou Zheng, Melina Arnold, Christian Abnet, Hongmei Zeng, Siwei Zhang, Ru Chen, Kexin Sun, Li Li, Lan An, Freddie Bray, Wenqiang Wei, Jie He

Table of Contents

Supplementary Table 1	1
Supplementary Table 2	8
Supplementary Table 3	14
Supplementary Figure 1	20

Supplementary Table 1. Cancer registries included in the analyses of esophageal cancer (EC) and gastric cancer (GC) in this study

No.	World region	Country	Cancer Registry	Population of 2003-2012	EC cases of 2003-2012	GC case of 2003-2012	EC analysis	GC analysis
1	Northern America	Canada	Canada, Northwest Territories	432876	10	30	NO	NO
2	Northern America	Canada	Canada, Alberta	35357377	1490	2497	YES	YES
3	Northern America	Canada	Canada, Yukon	332192	14	33	NO	YES
4	Northern America	Canada	Canada, Saskatchewan	10297273	457	900	YES	YES
5	Northern America	Canada	Canada, Prince Edward Island	1398500	87	116	YES	YES
6	Northern America	Canada	Canada, Ontario	128312256	6428	11308	YES	YES
7	Northern America	Canada	Canada, Nova Scotia	9394156	640	932	YES	YES
8	Northern America	Canada	Canada, New Brunswick	7500067	444	806	YES	YES
9	Northern America	Canada	Canada, Manitoba	12088364	528	1196	YES	YES
10	Northern America	Canada	Canada, British Columbia	43295298	2424	3636	YES	YES
11	Northern America	USA	USA, NPCR	2786191538	144720	196340	YES	YES
12	Eastern Asia	Republic of Korea	Korea	492892221	21307	278911	YES	YES
13	Eastern Asia	China	China, Shanghai	61833233	5607	25604	YES	YES
14	Eastern Asia	China	China, Jiashan	3819782	617	1451	NO	YES
15	Eastern Asia	China	China, Zhongshan	10130997	1156	903	YES	YES
16	Eastern Asia	China	China, Jiaxing City	4059016	500	1081	NO	YES
17	Eastern Asia	China	China, Beijing	74496578	6572	14610	YES	YES
18	Eastern Asia	China	China, Cixian	6234346	6736	3572	YES	YES
19	Eastern Asia	China	China, Yanting County	6028162	5649	6934	YES	YES
20	Eastern Asia	China	China, Hong Kong	69281900	4393	10526	YES	YES
21	Eastern Asia	China	China, Wuhan	47230943	4301	11325	NO	YES
22	Eastern Asia	China	China, Qidong County	11261461	1411	4470	YES	YES
23	Eastern Asia	Japan	Japan, Niigata Prefecture	24010863	5355	33169	YES	YES

24	Eastern Asia	Japan	Japan, Aichi Prefecture	44029505	5109	32645	YES	YES
25	Eastern Asia	Japan	Japan, Osaka Prefecture	88626813	13691	72490	YES	YES
26	Eastern Asia	Japan	Japan, Miyagi Prefecture	18847279	3541	19391	YES	YES
27	Eastern Asia	Japan	Japan, Nagasaki	14517179	2049	14474	YES	YES
28	Eastern Asia	Japan	Japan, Fukui Prefecture	8132464	927	9212	YES	YES
29	Eastern Africa	Uganda	Uganda, Kyadondo County	20551333	733	289	YES	NO
30	Eastern Africa	Zimbabwe	Zimbabwe, Harare: African	10087147	501	456	YES	NO
31	Northern Africa	Algeria	Algeria, Setif Wilaya	13314815	52	417	YES	NO
32	Central America	Costa Rica	Costa Rica	39454769	464	6929	YES	NO
33	South-Eastern Asia	Malaysia	Malaysia, Penang	9935600	153	572	YES	NO
34	South-Eastern Asia	Philippines	Philippines, Rizal	69983224	512	1707	YES	NO
35	South-Eastern Asia	Philippines	Philippines, Manila	62088322	550	1762	YES	NO
36	South-Eastern Asia	Thailand	Thailand, Khon Kaen	17423242	130	491	YES	NO
37	South-Eastern Asia	Thailand	Thailand, Lampang	7625533	122	452	YES	NO
38	South-Eastern Asia	Thailand	Thailand, Chonburi	10834447	359	423	YES	NO
39	South-Eastern Asia	Thailand	Thailand, Bangkok	54730668	1206	2011	YES	NO
40	South-Eastern Asia	Thailand	Thailand, Songkhla	12609989	651	266	YES	YES
41	South-Eastern Asia	Thailand	Thailand, Chiang Mai	15236978	208	995	YES	YES
42	South-Central Asia	India	India, Poona	43050250	1196	802	YES	NO
43	South-Central Asia	India	India, Dindigul, Ambalikkai	20832753	573	875	YES	NO
44	South-Central Asia	India	India, Bhopal	16071686	591	215	YES	NO
45	South-Central Asia	India	India, Bangalore	59878849	2886	3142	YES	NO
46	South-Central Asia	India	India, Trivandrum	9325471	262	355	YES	YES
47	South-Central Asia	India	India, Sikkim State	5873404	308	448	YES	YES
48	South-Central Asia	India	India, Mumbai (Bombay)	131901298	3988	3564	YES	YES
49	South-Central Asia	India	India, Mizoram	10269714	1057	2303	YES	YES

50	Western Asia	Bahrain	Bahrain: Bahraini	5145975	57	142	YES	NO
51	Western Asia	Kuwait	Kuwait: Non-Kuwaitis	21921772	48	197	NO	NO
52	Western Asia	Kuwait	Kuwait: Kuwaitis	10542668	61	158	YES	NO
53	Western Asia	Qatar	Qatar: Qatari	2251866	34	66	YES	NO
54	Western Asia	Saudi Arabia	Saudi Arabia, Riyadh: Saudi	40477665	260	690	YES	YES
55	Western Asia	Turkey	Turkey, Trabzon	5982505	83	1318	YES	YES
56	Western Asia	Turkey	Turkey, Izmir	37712377	844	4380	YES	YES
57	Western Asia	Turkey	Turkey, Antalya	17947694	204	1455	YES	YES
58	Western Asia	Turkey	Turkey, Edirne	3514859	54	578	NO	YES
59	Western Asia	Cyprus	Cyprus	7997619	95	743	YES	YES
60	Western Asia	Israel	Israel	71278142	1271	7156	YES	YES
61	Eastern Europe	Poland	Poland, Kielce	12873140	415	2158	YES	NO
62	Eastern Europe	Belarus	Belarus	96371318	4418	33095	YES	YES
63	Eastern Europe	Czech Republic	Czech Republic	103676390	5434	16488	YES	YES
64	Eastern Europe	Poland	Poland, Lower Silesia	28931268	1115	4530	YES	YES
65	Eastern Europe	Poland	Poland, Podkarpackie	21134879	572	3410	YES	YES
66	Eastern Europe	Slovakia	Slovakia	43194129	2307	7684	YES	YES
67	Eastern Europe	Bulgaria	Bulgaria	76100441	2043	17089	YES	YES
68	Eastern Europe	Ukraine	Ukraine	464534386	18580	124025	YES	YES
69	Northern Europe	Iceland	Iceland	3089813	188	315	YES	YES
70	Northern Europe	Ireland	Ireland	43471395	3642	5043	YES	YES
71	Northern Europe	Lithuania	Lithuania	32548117	1847	9577	YES	YES
72	Northern Europe	Norway	Norway	47607222	2124	5166	YES	YES
73	Northern Europe	Denmark	Denmark	54806432	4412	5463	YES	YES
74	Northern Europe	Estonia	Estonia	13385939	639	3982	YES	YES
75	Northern Europe	Latvia	Latvia	15287825	883	4393	YES	YES

76	Northern Europe	UK	UK, Scotland	51802252	8467	7698	YES	YES
77	Northern Europe	UK	UK, Northern Ireland	17653419	1793	2256	YES	YES
78	Northern Europe	UK	UK, England	515565534	66928	63021	YES	YES
79	Northern Europe	UK	UK, Wales	30047438	4424	4850	NO	YES
80	Southern Europe	Croatia	Croatia	43971124	2200	10503	YES	NO
81	Southern Europe	Malta	Malta	4097721	157	503	YES	YES
82	Southern Europe	Portugal	Portugal, Azores	2198016	93	471	NO	YES
83	Southern Europe	Italy	Italy, Veneto	16828064	1143	3504	YES	YES
84	Southern Europe	Italy	Italy, Varese	8513690	397	2251	YES	YES
85	Southern Europe	Italy	Italy, Umbria	7837845	202	3167	YES	YES
86	Southern Europe	Italy	Italy, Turin	15734391	707	3300	YES	YES
87	Southern Europe	Italy	Italy, Trento	3539896	263	828	YES	YES
88	Southern Europe	Italy	Italy, Syracuse	3987201	60	557	NO	YES
89	Southern Europe	Italy	Italy, South Tyrol	3426770	187	910	YES	YES
90	Southern Europe	Italy	Italy, Sondrio	1805312	122	562	YES	YES
91	Southern Europe	Italy	Italy, Sassari	4284251	200	598	YES	YES
92	Southern Europe	Italy	Italy, Romagna	11908509	305	4946	YES	YES
93	Southern Europe	Italy	Italy, Reggio Emilia	5115530	161	1443	YES	YES
94	Southern Europe	Italy	Italy, Parma	4211150	200	1640	YES	YES
95	Southern Europe	Italy	Italy, Palermo	11185441	191	1540	YES	YES
96	Southern Europe	Italy	Italy, Nuoro	2321964	112	466	YES	YES
97	Southern Europe	Italy	Italy, Naples	5600592	100	869	YES	YES
98	Southern Europe	Italy	Italy, Modena	6718061	191	1822	YES	YES
99	Southern Europe	Italy	Italy, Milan	18890887	806	4741	YES	YES
100	Southern Europe	Italy	Italy, Mantua	2366393	114	737	YES	YES
101	Southern Europe	Italy	Italy, Lecco	2610265	88	892	YES	YES

102	Southern Europe	Italy	Italy, Latina	5362948	132	1093	YES	YES
103	Southern Europe	Italy	Italy, Friuli-Venezia Giulia	9772461	778	3142	YES	YES
104	Southern Europe	Italy	Italy, Ferrara	3194560	164	905	YES	YES
105	Southern Europe	Italy	Italy, Como	5132892	179	1481	YES	YES
106	Southern Europe	Italy	Italy, Biella	1861740	114	446	YES	YES
107	Southern Europe	Slovenia	Slovenia	20245796	878	4749	YES	YES
108	Southern Europe	Spain	Spain, Tarragona	7468595	312	1000	YES	YES
109	Southern Europe	Spain	Spain, Navarra	4852045	251	1020	YES	YES
110	Southern Europe	Spain	Spain, Murcia	11097184	334	1453	YES	YES
111	Southern Europe	Spain	Spain, Mallorca	7310124	308	824	YES	YES
112	Southern Europe	Spain	Spain, La Rioja	3096109	145	673	YES	YES
113	Southern Europe	Spain	Spain, Granada	8893637	260	1212	YES	YES
114	Southern Europe	Spain	Spain, Girona	6953063	376	1180	YES	YES
115	Southern Europe	Spain	Spain, Cuenca	1897450	78	482	NO	YES
116	Southern Europe	Spain	Spain, Ciudad Real	4089799	136	870	YES	YES
117	Southern Europe	Spain	Spain, Canary Islands	13519713	682	1312	YES	YES
118	Southern Europe	Spain	Spain, Basque Country	21449176	1585	5134	YES	YES
119	Southern Europe	Spain	Spain, Asturias	8550899	599	2003	YES	YES
120	Southern Europe	Spain	Spain, Albacete	3096393	123	513	YES	YES
121	Western Europe	Belgium	Belgium	96185254	8334	12796	YES	YES
122	Western Europe	Switzerland	Switzerland, Ticino	3293757	251	604	YES	YES
123	Western Europe	Switzerland	Switzerland, Neuchatel	1700447	133	169	YES	YES
124	Western Europe	Switzerland	Switzerland, Graubunden	2283524	152	321	YES	YES
125	Western Europe	Switzerland	Switzerland, Geneva	4411333	312	426	YES	YES
126	Western Europe	Switzerland	Switzerland, St Gall-Appenzell	5364741	330	555	YES	YES
127	Western Europe	Switzerland	Switzerland, Valais	3011443	239	409	YES	YES

128	Western Europe	Switzerland	Switzerland, Vaud	6786648	608	623	YES	YES
129	Western Europe	Switzerland	Switzerland, Zurich	13145648	847	1308	YES	YES
130	Western Europe	Austria	Austria	82920804	3938	14082	YES	YES
131	Western Europe	France	France, Somme	5657171	668	650	YES	YES
132	Western Europe	France	France, Martinique	3951952	155	782	YES	YES
133	Western Europe	France	France, Manche	4441185	527	803	YES	YES
134	Western Europe	France	France, Loire-Atlantique	12530039	1211	1264	YES	YES
135	Western Europe	France	France, Isere	11927935	661	1255	YES	YES
136	Western Europe	France	France, Herault	10184326	637	1068	YES	YES
137	Western Europe	France	France, Haut-Rhin	7449913	562	894	YES	YES
138	Western Europe	France	France, Doubs	5219638	291	538	YES	YES
139	Western Europe	France	France, Calvados	6763302	716	731	YES	YES
140	Western Europe	France	France, Bas-Rhin	9793749	749	1049	YES	YES
141	Western Europe	France	France, Vendee	6129114	582	744	YES	YES
142	Western Europe	France	France, Tarn	3715474	265	429	YES	YES
143	Western Europe	Germany	Germany, Schleswig-Holstein	28255422	2465	6017	YES	YES
144	Western Europe	Germany	Germany, Saarland	10352384	746	2114	YES	YES
145	Western Europe	Germany	Germany, Munich	42369816	2662	7964	YES	YES
146	Western Europe	Germany	Germany, Hamburg	17534050	1748	3044	YES	YES
147	Western Europe	Germany	Germany, Bremen	6621502	652	1298	YES	YES
148	Western Europe	The Netherlands	The Netherlands	164594104	17761	20075	YES	YES
149	Australia/New Zealand	Australia	Australia, Queensland	41989874	2443	3391	YES	YES
150	Australia/New Zealand	Australia	Australia, Northern Territory	2172680	98	77	YES	YES
151	Australia/New Zealand	Australia	Australia, Tasmania	4945490	440	538	YES	YES
152	Australia/New Zealand	Australia	Australia, Western	21607205	1266	1765	YES	YES
153	Australia/New Zealand	Australia	Australia, New South Wales	69524461	4202	6654	YES	YES

154	Australia/New Zealand	Australia	Australia, Victoria	52544668	3244	5471	YES	YES
155	Australia/New Zealand	Australia	Australia, South	15898446	1082	1638	YES	YES
156	Australia/New Zealand	New Zealand	New Zealand	42378835	2698	3742	YES	YES
157	South America	Uruguay	Uruguay	26921032	2154	4150	YES	NO
158	South America	Argentina	Argentina, Cordoba	12138354	505	997	YES	NO
159	South America	Argentina	Argentina, Tierra del Fuego	1234608	26	83	NO	NO
160	South America	Chile	Chile, Region of Antofagasta	4406932	134	587	YES	NO
161	South America	Colombia	Colombia, Pasto	3969974	62	796	YES	NO
162	South America	Colombia	Colombia, Manizales	3828790	103	683	YES	NO
163	South America	Argentina	Argentina, Mendoza	16844458	821	1811	YES	YES
164	South America	Brazil	Brazil, Aracaju	4788440	108	368	YES	YES
165	South America	Brazil	Brazil, Goiania	12471354	486	1386	YES	YES
166	South America	Chile	Chile, Bio Bio Province	3804850	295	1321	YES	YES
167	South America	Chile	Chile, Valdivia	3758280	251	1114	YES	YES
168	South America	Colombia	Colombia, Cali	21428447	360	3681	YES	YES
169	South America	Colombia	Colombia, Bucaramanga	10497931	187	1531	YES	YES
170	South America	Ecuador	Ecuador, Quito	15708823	190	2655	YES	YES
171	South America	Ecuador	Ecuador, Cuenca	4800490	37	810	NO	YES

Note: EC, esophageal cancer; GC, gastric cancer; Case number is the total cases of esophageal cancer or gastric cancer that included in CIS volumes X to XI from 2003 to 2012

Supplementary Table 2. National estimations of age-standardized incidence rates and 95%CIs for esophageal cancer and gastric cancer in males, overall and by subtype and subsite (2003-2012)

World region	Country	Period	Age-standardized incidence rate (95%CIs)					
			Gastric cancer	GCC	GNCC	Esophageal cancer	ESCC	EAC
Total	Total	2003–2012	14.89(14.86,14.92)	2.55(2.54,2.57)	12.34(12.31,12.37)	6.36(6.34,6.38)	3.26(3.24,3.27)	2.97(2.96,2.98)
Total	Total	2003-2007	15.29(15.24,15.34)	2.56(2.54,2.58)	12.74(12.69,12.78)	6.46(6.43,6.49)	3.41(3.39,3.44)	2.91(2.89,2.94)
Total	Total	2008–2012	14.55(14.50,14.59)	2.55(2.53,2.57)	12.00(11.96,12.04)	6.27(6.25,6.30)	3.12(3.10,3.14)	3.02(3.00,3.04)
Northern America	Canada	2003–2012	6.74(6.62,6.86)	2.56(2.49,2.63)	4.18(4.09,4.27)	4.73(4.63,4.83)	1.35(1.30,1.40)	3.25(3.17,3.34)
Northern America	Canada	2003-2007	7.22(7.04,7.40)	2.62(2.51,2.73)	4.60(4.46,4.74)	4.47(4.33,4.61)	1.40(1.32,1.48)	2.95(2.84,3.07)
Northern America	Canada	2008–2012	6.33(6.18,6.49)	2.51(2.41,2.61)	3.83(3.71,3.95)	4.95(4.81,5.09)	1.31(1.23,1.38)	3.51(3.39,3.62)
Northern America	USA	2003–2012	5.77(5.74,5.81)	2.23(2.21,2.25)	3.54(3.51,3.57)	5.57(5.54,5.60)	1.52(1.51,1.54)	3.89(3.87,3.92)
Northern America	USA	2003-2007	5.92(5.87,5.97)	2.20(2.17,2.23)	3.72(3.68,3.76)	5.76(5.71,5.81)	1.66(1.64,1.69)	3.95(3.90,3.99)
Northern America	USA	2008–2012	5.66(5.62,5.71)	2.26(2.23,2.29)	3.40(3.37,3.44)	5.42(5.37,5.46)	1.41(1.39,1.43)	3.85(3.81,3.89)
Eastern Asia	China	2003–2012	21.08(20.89,21.27)	3.63(3.56,3.71)	17.45(17.28,17.62)	10.76(10.61,10.91)	9.98(9.84,10.13)	0.59(0.56,0.63)
Eastern Asia	China	2003-2007	22.54(22.25,22.82)	4.00(3.88,4.12)	18.54(18.28,18.80)	11.95(11.72,12.18)	11.17(10.94,11.39)	0.58(0.53,0.62)
Eastern Asia	China	2008–2012	19.82(19.57,20.07)	3.33(3.23,3.43)	16.49(16.26,16.72)	9.77(9.58,9.97)	9.02(8.83,9.20)	0.60(0.55,0.64)
Eastern Asia	Japan	2003–2012	55.06(54.73,55.39)	3.82(3.74,3.91)	51.24(50.92,51.55)	12.02(11.86,12.17)	11.23(11.08,11.38)	0.55(0.51,0.58)
Eastern Asia	Japan	2003-2007	54.16(53.66,54.67)	3.48(3.35,3.60)	50.69(50.20,51.17)	11.88(11.64,12.12)	11.16(10.93,11.39)	0.48(0.43,0.52)
Eastern Asia	Japan	2008–2012	55.57(55.14,56.00)	4.07(3.95,4.19)	51.50(51.08,51.92)	12.10(11.90,12.31)	11.26(11.07,11.46)	0.60(0.55,0.65)
Eastern Asia	Republic of Korea	2003–2012	63.84(63.55,64.14)	2.84(2.78,2.91)	61.00(60.71,61.29)	6.90(6.80,6.99)	6.52(6.42,6.61)	0.25(0.23,0.27)
Eastern Asia	Republic of Korea	2003-2007	64.61(64.17,65.06)	2.70(2.61,2.79)	61.91(61.48,62.35)	7.41(7.25,7.56)	6.97(6.82,7.12)	0.29(0.26,0.32)
Eastern Asia	Republic of Korea	2008–2012	63.18(62.79,63.57)	2.95(2.86,3.03)	60.23(59.85,60.62)	6.48(6.35,6.61)	6.14(6.02,6.27)	0.22(0.20,0.24)
South-Eastern Asia	Thailand	2003–2012	4.64(4.30,4.99)	0.49(0.38,0.60)	4.15(3.82,4.48)	3.82(3.66,3.98)	3.58(3.42,3.73)	0.19(0.16,0.23)
South-Eastern Asia	Thailand	2003-2007	5.02(4.49,5.56)	0.41(0.26,0.57)	4.61(4.10,5.12)	3.86(3.63,4.09)	3.58(3.36,3.80)	0.21(0.16,0.27)
South-Eastern Asia	Thailand	2008–2012	4.29(3.84,4.74)	0.56(0.40,0.72)	3.73(3.31,4.15)	3.79(3.57,4.01)	3.58(3.36,3.79)	0.17(0.12,0.21)
South-Central Asia	India	2003–2012	7.36(7.14,7.58)	0.82(0.75,0.90)	6.54(6.33,6.74)	5.96(5.82,6.10)	5.52(5.38,5.66)	0.40(0.36,0.44)

South-Central Asia	India	2003-2007	7.51(7.18,7.84)	0.65(0.56,0.75)	6.85(6.54,7.17)	6.18(5.96,6.41)	5.85(5.63,6.07)	0.30(0.25,0.35)
South-Central Asia	India	2008-2012	7.23(6.94,7.52)	0.96(0.86,1.07)	6.26(5.99,6.54)	5.79(5.60,5.98)	5.28(5.10,5.46)	0.47(0.42,0.53)
Western Asia	Cyprus	2003-2012	7.60(6.88,8.32)	1.28(0.98,1.58)	6.32(5.67,6.98)	1.21(0.92,1.51)	0.57(0.36,0.77)	0.53(0.34,0.72)
Western Asia	Cyprus	2003-2007	7.44(6.39,8.49)	1.26(0.82,1.70)	6.18(5.23,7.13)	1.30(0.86,1.75)	0.55(0.25,0.84)	0.55(0.26,0.84)
Western Asia	Cyprus	2008-2012	7.69(6.70,8.68)	1.28(0.88,1.69)	6.40(5.50,7.30)	1.13(0.75,1.52)	0.58(0.30,0.85)	0.52(0.26,0.79)
Western Asia	Israel	2003-2012	10.55(10.22,10.88)	2.19(2.04,2.34)	8.35(8.06,8.65)	1.87(1.73,2.01)	0.80(0.71,0.89)	1.03(0.92,1.13)
Western Asia	Israel	2003-2007	10.77(10.30,11.25)	2.17(1.96,2.37)	8.61(8.18,9.03)	1.90(1.70,2.09)	0.82(0.70,0.95)	1.04(0.89,1.19)
Western Asia	Israel	2008-2012	9.60(9.18,10.02)	2.08(1.89,2.28)	7.52(7.15,7.89)	1.68(1.50,1.85)	0.69(0.58,0.80)	0.93(0.80,1.05)
Western Asia	Saudi Arabia	2003-2012	4.21(3.82,4.60)	1.06(0.87,1.26)	3.14(2.81,3.48)	1.54(1.31,1.78)	1.00(0.81,1.19)	0.53(0.39,0.66)
Western Asia	Saudi Arabia	2003-2007	4.81(4.14,5.48)	1.06(0.75,1.38)	3.74(3.15,4.33)	1.83(1.42,2.23)	1.32(0.98,1.66)	0.51(0.29,0.73)
Western Asia	Saudi Arabia	2008-2012	3.81(3.34,4.29)	1.08(0.82,1.34)	2.73(2.34,3.13)	1.36(1.07,1.64)	0.79(0.57,1.01)	0.54(0.36,0.72)
Western Asia	Turkey	2003-2012	14.62(14.19,15.05)	2.39(2.22,2.57)	12.23(11.83,12.62)	2.15(1.98,2.32)	1.52(1.37,1.66)	0.57(0.48,0.66)
Western Asia	Turkey	2003-2007	14.23(13.63,14.84)	1.91(1.69,2.14)	12.32(11.75,12.88)	2.30(2.05,2.55)	1.67(1.46,1.89)	0.56(0.44,0.69)
Western Asia	Turkey	2008-2012	14.40(13.86,14.94)	2.66(2.43,2.90)	11.74(11.25,12.23)	1.93(1.72,2.14)	1.33(1.16,1.50)	0.56(0.45,0.68)
Eastern Europe	Belarus	2003-2012	31.73(31.27,32.19)	2.25(2.13,2.37)	29.48(29.04,29.92)	6.77(6.56,6.98)	5.84(5.65,6.04)	0.83(0.75,0.90)
Eastern Europe	Belarus	2003-2007	33.31(32.64,33.99)	2.46(2.28,2.65)	30.85(30.20,31.50)	6.65(6.34,6.96)	5.76(5.47,6.04)	0.82(0.71,0.93)
Eastern Europe	Belarus	2008-2012	30.29(29.65,30.92)	2.06(1.89,2.23)	28.23(27.61,28.84)	6.92(6.61,7.22)	5.95(5.67,6.23)	0.85(0.74,0.95)
Eastern Europe	Bulgaria	2003-2012	15.16(14.85,15.46)	1.89(1.78,2.00)	13.27(12.99,13.55)	2.60(2.47,2.73)	1.86(1.75,1.97)	0.70(0.63,0.76)
Eastern Europe	Bulgaria	2003-2007	16.08(15.63,16.52)	1.79(1.64,1.95)	14.28(13.86,14.70)	2.45(2.27,2.63)	1.72(1.57,1.87)	0.68(0.58,0.77)
Eastern Europe	Bulgaria	2008-2012	14.26(13.85,14.68)	1.99(1.83,2.15)	12.28(11.89,12.66)	2.74(2.55,2.93)	1.99(1.83,2.15)	0.71(0.61,0.80)
Eastern Europe	Czech Republic	2003-2012	11.27(11.03,11.50)	1.91(1.82,2.01)	9.35(9.14,9.56)	5.54(5.38,5.71)	3.21(3.08,3.33)	2.22(2.12,2.32)
Eastern Europe	Czech Republic	2003-2007	12.24(11.89,12.59)	2.10(1.95,2.25)	10.14(9.82,10.46)	5.28(5.05,5.52)	3.16(2.98,3.35)	2.00(1.86,2.15)
Eastern Europe	Czech Republic	2008-2012	10.39(10.08,10.69)	1.74(1.61,1.86)	8.65(8.37,8.93)	5.77(5.54,6.00)	3.23(3.06,3.41)	2.42(2.27,2.57)
Eastern Europe	Poland	2003-2012	14.10(13.70,14.50)	1.92(1.77,2.07)	12.18(11.80,12.55)	3.91(3.72,4.10)	3.34(3.17,3.52)	0.52(0.45,0.59)
Eastern Europe	Poland	2003-2007	14.56(13.97,15.16)	1.71(1.50,1.91)	12.86(12.29,13.42)	4.02(3.74,4.31)	3.48(3.22,3.75)	0.50(0.40,0.59)
Eastern Europe	Poland	2008-2012	13.61(13.06,14.16)	2.11(1.89,2.33)	11.50(11.00,12.00)	3.80(3.54,4.06)	3.21(2.97,3.44)	0.54(0.44,0.64)

Eastern Europe	Slovakia	2003–2012	16.28(15.79,16.76)	2.38(2.20,2.57)	13.89(13.45,14.34)	7.52(7.19,7.85)	6.48(6.17,6.79)	0.93(0.82,1.05)
Eastern Europe	Slovakia	2003-2007	16.81(16.18,17.44)	2.61(2.36,2.86)	14.20(13.62,14.78)	7.56(7.14,7.99)	6.55(6.15,6.94)	0.91(0.76,1.06)
Eastern Europe	Slovakia	2008–2012	15.48(14.73,16.23)	2.04(1.76,2.31)	13.44(12.74,14.14)	7.44(6.92,7.96)	6.34(5.86,6.82)	0.99(0.80,1.18)
Eastern Europe	Ukraine	2003–2012	23.68(23.51,23.86)	2.93(2.87,3.00)	20.75(20.59,20.91)	5.37(5.28,5.45)	4.50(4.42,4.58)	0.83(0.80,0.86)
Eastern Europe	Ukraine	2003-2007	25.10(24.85,25.35)	3.10(3.01,3.19)	22.00(21.76,22.24)	5.35(5.23,5.47)	4.41(4.30,4.52)	0.90(0.85,0.95)
Eastern Europe	Ukraine	2008–2012	22.23(21.99,22.47)	2.77(2.68,2.85)	19.46(19.24,19.69)	5.40(5.28,5.52)	4.60(4.49,4.71)	0.76(0.72,0.81)
Northern Europe	Denmark	2003–2012	7.19(6.95,7.44)	3.94(3.75,4.12)	3.25(3.09,3.42)	6.50(6.27,6.74)	2.85(2.70,3.01)	3.45(3.29,3.62)
Northern Europe	Denmark	2003-2007	7.46(7.09,7.82)	3.92(3.65,4.19)	3.54(3.29,3.78)	5.98(5.65,6.30)	2.63(2.41,2.85)	3.19(2.96,3.43)
Northern Europe	Denmark	2008–2012	6.95(6.62,7.28)	3.96(3.70,4.21)	2.99(2.78,3.21)	6.96(6.63,7.30)	3.05(2.82,3.27)	3.68(3.44,3.92)
Northern Europe	Estonia	2003–2012	22.35(21.39,23.32)	2.37(2.05,2.68)	19.99(19.07,20.90)	5.66(5.17,6.16)	5.01(4.54,5.47)	0.59(0.43,0.75)
Northern Europe	Estonia	2003-2007	23.00(21.59,24.41)	2.28(1.83,2.72)	20.73(19.39,22.06)	5.08(4.41,5.75)	4.46(3.83,5.09)	0.57(0.34,0.80)
Northern Europe	Estonia	2008–2012	21.67(20.35,23.00)	2.45(2.01,2.90)	19.22(17.97,20.46)	6.24(5.51,6.97)	5.54(4.85,6.22)	0.62(0.40,0.85)
Northern Europe	Iceland	2003–2012	7.37(6.25,8.49)	1.46(0.95,1.97)	5.91(4.92,6.91)	6.34(5.25,7.42)	1.57(1.03,2.11)	4.56(3.64,5.48)
Northern Europe	Iceland	2003-2007	9.18(7.30,11.05)	1.70(0.88,2.51)	7.48(5.79,9.17)	5.30(3.85,6.75)	2.31(1.34,3.28)	2.84(1.80,3.88)
Northern Europe	Iceland	2008–2012	5.90(4.56,7.25)	1.23(0.60,1.87)	4.67(3.48,5.86)	7.23(5.65,8.81)	0.97(0.39,1.55)	6.00(4.56,7.44)
Northern Europe	Ireland	2003–2012	10.45(10.08,10.82)	3.76(3.53,3.98)	6.69(6.40,6.99)	7.88(7.56,8.21)	2.63(2.44,2.82)	5.08(4.82,5.34)
Northern Europe	Ireland	2003-2007	10.48(9.93,11.03)	3.18(2.87,3.48)	7.30(6.84,7.76)	8.17(7.68,8.66)	2.84(2.55,3.13)	5.18(4.79,5.56)
Northern Europe	Ireland	2008–2012	10.44(9.93,10.95)	4.26(3.93,4.59)	6.18(5.79,6.56)	7.65(7.21,8.09)	2.47(2.22,2.72)	4.99(4.64,5.35)
Northern Europe	Latvia	2003–2012	22.13(21.23,23.03)	1.12(0.92,1.32)	21.01(20.14,21.89)	7.17(6.65,7.69)	6.28(5.79,6.77)	0.76(0.59,0.92)
Northern Europe	Latvia	2003-2007	24.34(23.10,25.59)	1.21(0.94,1.49)	23.13(21.92,24.34)	6.62(5.96,7.28)	5.86(5.23,6.48)	0.69(0.48,0.90)
Northern Europe	Latvia	2008–2012	19.18(17.90,20.47)	1.00(0.70,1.30)	18.18(16.93,19.43)	7.90(7.05,8.74)	6.84(6.05,7.62)	0.85(0.58,1.13)
Northern Europe	Lithuania	2003–2012	24.15(23.50,24.81)	1.37(1.22,1.53)	22.78(22.14,23.41)	7.36(6.99,7.73)	6.37(6.03,6.72)	0.87(0.74,0.99)
Northern Europe	Lithuania	2003-2007	25.74(24.78,26.70)	1.36(1.14,1.58)	24.38(23.45,25.31)	7.17(6.65,7.68)	6.01(5.54,6.49)	1.00(0.81,1.19)
Northern Europe	Lithuania	2008–2012	22.59(21.69,23.48)	1.39(1.17,1.61)	21.20(20.33,22.07)	7.59(7.06,8.13)	6.78(6.27,7.28)	0.74(0.57,0.90)
Northern Europe	Norway	2003–2012	7.12(6.86,7.39)	2.21(2.06,2.36)	4.91(4.69,5.13)	3.87(3.67,4.08)	1.41(1.29,1.53)	2.36(2.20,2.52)
Northern Europe	Norway	2003-2007	7.74(7.33,8.14)	2.35(2.12,2.58)	5.39(5.06,5.72)	3.69(3.40,3.98)	1.44(1.26,1.63)	2.14(1.93,2.36)

Northern Europe	Norway	2008–2012	6.57(6.21,6.92)	2.07(1.87,2.28)	4.49(4.20,4.78)	4.04(3.76,4.33)	1.39(1.22,1.55)	2.55(2.33,2.77)
Northern Europe	UK	2003–2012	8.35(8.27,8.43)	2.94(2.89,2.99)	5.41(5.35,5.47)	9.66(9.57,9.75)	2.31(2.26,2.35)	7.14(7.07,7.22)
Northern Europe	UK	2003-2007	9.13(9.01,9.25)	3.12(3.05,3.19)	6.01(5.92,6.10)	9.50(9.37,9.62)	2.44(2.37,2.50)	6.85(6.74,6.96)
Northern Europe	UK	2008–2012	7.65(7.54,7.75)	2.78(2.71,2.84)	4.87(4.79,4.95)	9.82(9.69,9.94)	2.19(2.13,2.25)	7.41(7.30,7.52)
Southern Europe	Italy	2003–2012	13.57(13.38,13.75)	1.83(1.76,1.90)	11.73(11.56,11.90)	3.24(3.15,3.34)	2.19(2.11,2.26)	0.98(0.93,1.03)
Southern Europe	Italy	2003-2007	14.88(14.59,15.16)	1.87(1.76,1.97)	13.01(12.74,13.27)	3.56(3.41,3.70)	2.52(2.40,2.65)	0.97(0.90,1.05)
Southern Europe	Italy	2008–2012	12.48(12.24,12.71)	1.81(1.71,1.90)	10.67(10.45,10.89)	2.98(2.85,3.10)	1.90(1.80,2.00)	1.00(0.93,1.07)
Southern Europe	Malta	2003–2012	8.85(7.85,9.84)	2.17(1.68,2.66)	6.67(5.81,7.54)	3.34(2.72,3.97)	1.30(0.91,1.70)	2.01(1.53,2.50)
Southern Europe	Malta	2003-2007	8.42(7.00,9.83)	2.53(1.75,3.32)	5.88(4.71,7.06)	3.33(2.39,4.27)	1.18(0.62,1.73)	2.10(1.35,2.85)
Southern Europe	Malta	2008–2012	9.19(7.79,10.60)	1.87(1.24,2.50)	7.32(6.07,8.58)	3.43(2.58,4.29)	1.45(0.88,2.02)	1.98(1.34,2.62)
Southern Europe	Portugal	2003–2012	20.87(18.45,23.30)	2.51(1.67,3.34)	18.37(16.09,20.65)			
Southern Europe	Portugal	2003-2007	20.38(17.15,23.61)	2.50(1.36,3.63)	17.88(14.86,20.91)			
Southern Europe	Portugal	2008–2012	21.49(17.82,25.16)	2.56(1.31,3.81)	18.93(15.48,22.39)			
Southern Europe	Slovenia	2003–2012	17.06(16.43,17.69)	2.99(2.73,3.26)	14.07(13.49,14.64)	4.36(4.04,4.68)	3.44(3.15,3.73)	0.82(0.68,0.96)
Southern Europe	Slovenia	2003-2007	18.30(17.35,19.26)	3.25(2.85,3.65)	15.05(14.19,15.92)	4.92(4.42,5.42)	3.96(3.51,4.41)	0.86(0.65,1.07)
Southern Europe	Slovenia	2008–2012	15.94(15.10,16.78)	2.76(2.41,3.12)	13.18(12.41,13.94)	3.87(3.45,4.30)	2.98(2.61,3.36)	0.80(0.61,0.98)
Southern Europe	Spain	2003–2012	11.73(11.49,11.96)	1.95(1.86,2.05)	9.78(9.56,9.99)	5.36(5.19,5.53)	3.76(3.62,3.90)	1.51(1.43,1.60)
Southern Europe	Spain	2003-2007	12.11(11.78,12.45)	1.88(1.75,2.01)	10.23(9.93,10.54)	5.69(5.45,5.93)	4.09(3.88,4.30)	1.54(1.41,1.66)
Southern Europe	Spain	2008–2012	11.31(10.98,11.65)	2.02(1.88,2.17)	9.29(8.99,9.59)	5.03(4.80,5.26)	3.43(3.24,3.62)	1.49(1.36,1.61)
Western Europe	Austria	2003–2012	10.32(10.08,10.56)	1.91(1.80,2.01)	8.41(8.20,8.63)	4.70(4.53,4.87)	2.75(2.62,2.88)	1.85(1.74,1.95)
Western Europe	Austria	2003-2007	11.15(10.79,11.51)	1.82(1.67,1.96)	9.33(9.00,9.66)	4.84(4.59,5.08)	2.90(2.70,3.09)	1.86(1.70,2.01)
Western Europe	Austria	2008–2012	9.61(9.29,9.92)	1.98(1.84,2.13)	7.62(7.34,7.90)	4.56(4.33,4.79)	2.60(2.42,2.77)	1.84(1.69,1.98)
Western Europe	Belgium	2003–2012	8.92(8.71,9.12)	2.98(2.86,3.10)	5.94(5.77,6.11)	7.62(7.42,7.82)	3.92(3.78,4.06)	3.54(3.41,3.68)
Western Europe	Belgium	2003-2007	9.10(8.78,9.43)	2.64(2.46,2.81)	6.47(6.20,6.74)	7.86(7.55,8.17)	4.11(3.88,4.34)	3.59(3.38,3.79)
Western Europe	Belgium	2008–2012	8.79(8.51,9.06)	3.23(3.06,3.40)	5.56(5.34,5.77)	7.43(7.18,7.69)	3.78(3.60,3.97)	3.50(3.33,3.68)
Western Europe	France	2003–2012	8.17(7.96,8.39)	2.61(2.49,2.73)	5.57(5.39,5.74)	7.92(7.71,8.14)	5.59(5.41,5.78)	2.20(2.09,2.31)

Western Europe	France	2003-2007	8.62(8.30,8.93)	2.50(2.33,2.67)	6.12(5.85,6.38)	8.30(7.98,8.61)	6.09(5.81,6.36)	2.07(1.91,2.22)
Western Europe	France	2008-2012	7.77(7.48,8.06)	2.71(2.54,2.88)	5.07(4.83,5.30)	7.55(7.26,7.84)	5.12(4.88,5.36)	2.31(2.16,2.47)
Western Europe	Germany	2003-2012	10.95(10.74,11.16)	3.26(3.14,3.38)	7.69(7.52,7.87)	6.54(6.37,6.71)	3.68(3.56,3.81)	2.72(2.61,2.82)
Western Europe	Germany	2003-2007	11.46(11.15,11.77)	3.08(2.91,3.24)	8.38(8.12,8.65)	6.49(6.24,6.73)	3.97(3.78,4.16)	2.37(2.22,2.51)
Western Europe	Germany	2008-2012	10.53(10.24,10.81)	3.42(3.26,3.59)	7.10(6.87,7.33)	6.59(6.36,6.82)	3.42(3.25,3.58)	3.04(2.88,3.19)
Western Europe	Switzerland	2003-2012	7.48(7.18,7.78)	2.42(2.25,2.59)	5.06(4.82,5.30)	6.20(5.93,6.47)	3.39(3.19,3.60)	2.67(2.50,2.85)
Western Europe	Switzerland	2003-2007	7.62(7.19,8.06)	2.36(2.12,2.60)	5.26(4.90,5.62)	6.16(5.76,6.55)	3.58(3.27,3.89)	2.38(2.14,2.62)
Western Europe	Switzerland	2008-2012	7.36(6.95,7.77)	2.47(2.23,2.71)	4.89(4.56,5.22)	6.23(5.85,6.60)	3.22(2.95,3.49)	2.94(2.68,3.19)
Western Europe	The Netherlands	2003-2012	8.74(8.58,8.89)	2.93(2.83,3.02)	5.81(5.68,5.94)	9.23(9.07,9.39)	2.47(2.38,2.55)	6.59(6.45,6.72)
Western Europe	The Netherlands	2003-2007	9.31(9.07,9.54)	3.11(2.97,3.25)	6.20(6.01,6.39)	8.60(8.37,8.83)	2.45(2.33,2.57)	5.99(5.80,6.18)
Western Europe	The Netherlands	2008-2012	8.24(8.03,8.45)	2.76(2.64,2.88)	5.48(5.31,5.65)	9.78(9.55,10.01)	2.47(2.36,2.59)	7.11(6.91,7.31)
Australia/New Zealand	Australia	2003-2012	7.38(7.25,7.51)	2.75(2.66,2.83)	4.63(4.53,4.74)	5.27(5.16,5.39)	1.73(1.66,1.79)	3.44(3.35,3.53)
Australia/New Zealand	Australia	2003-2007	7.63(7.44,7.83)	2.74(2.61,2.86)	4.90(4.74,5.06)	5.16(4.99,5.32)	1.82(1.72,1.91)	3.23(3.10,3.36)
Australia/New Zealand	Australia	2008-2012	7.16(6.98,7.34)	2.75(2.64,2.87)	4.40(4.26,4.54)	5.37(5.21,5.53)	1.65(1.56,1.74)	3.62(3.49,3.75)
Australia/New Zealand	New Zealand	2003-2012	7.28(6.98,7.59)	2.68(2.49,2.87)	4.60(4.36,4.85)	5.45(5.19,5.71)	1.38(1.25,1.51)	3.91(3.69,4.13)
Australia/New Zealand	New Zealand	2003-2007	7.59(7.13,8.05)	2.68(2.41,2.96)	4.90(4.54,5.27)	5.52(5.13,5.90)	1.51(1.31,1.71)	3.89(3.56,4.21)
Australia/New Zealand	New Zealand	2008-2012	7.04(6.62,7.45)	2.68(2.43,2.94)	4.35(4.03,4.68)	5.41(5.05,5.76)	1.28(1.11,1.45)	3.94(3.64,4.25)
South America	Argentina	2003-2012	12.90(12.15,13.65)	1.21(0.98,1.44)	11.68(10.97,12.40)	5.60(5.21,5.98)	3.49(3.18,3.80)	2.09(1.85,2.32)
South America	Argentina	2003-2007	13.08(11.98,14.17)	0.92(0.63,1.22)	12.15(11.10,13.21)	6.47(5.85,7.09)	4.45(3.93,4.96)	2.00(1.66,2.33)
South America	Argentina	2008-2012	12.74(11.71,13.78)	1.48(1.13,1.84)	11.26(10.29,12.23)	4.86(4.37,5.35)	2.70(2.33,3.06)	2.15(1.82,2.48)
South America	Brazil	2003-2012	17.83(16.72,18.95)	1.88(1.51,2.24)	15.96(14.90,17.01)	7.44(6.73,8.15)	6.96(6.28,7.65)	0.39(0.21,0.57)
South America	Brazil	2003-2007	22.05(20.17,23.93)	2.29(1.70,2.88)	19.76(17.97,21.54)	9.17(7.97,10.37)	8.80(7.63,9.97)	0.28(0.07,0.49)
South America	Brazil	2008-2012	15.69(14.13,17.24)	1.48(1.04,1.92)	14.20(12.71,15.69)	6.81(5.75,7.87)	6.06(5.11,7.02)	0.66(0.22,1.11)
South America	Chile	2003-2012	45.11(42.45,47.77)	4.81(3.97,5.64)	40.31(37.77,42.84)	10.55(9.06,12.04)	8.81(7.43,10.18)	1.53(0.96,2.11)
South America	Chile	2003-2007	39.46(36.57,42.36)	4.26(3.34,5.18)	35.20(32.45,37.95)	8.46(7.21,9.72)	7.01(5.85,8.18)	1.26(0.80,1.72)
South America	Chile	2008-2012	37.34(34.88,39.81)	4.10(3.29,4.91)	33.24(30.92,35.57)	6.09(5.24,6.94)	5.14(4.36,5.93)	0.71(0.43,0.99)

South America	Colombia	2003–2012	22.00(21.19,22.81)	2.32(2.06,2.58)	19.68(18.91,20.45)	2.50(2.25,2.74)	1.43(1.25,1.62)	1.04(0.88,1.20)
South America	Colombia	2003-2007	24.68(23.40,25.95)	2.37(1.98,2.76)	22.31(21.09,23.52)	3.14(2.73,3.55)	1.86(1.55,2.18)	1.25(0.98,1.51)
South America	Colombia	2008–2012	19.78(18.75,20.82)	2.27(1.92,2.62)	17.51(16.53,18.49)	1.95(1.66,2.25)	1.06(0.84,1.28)	0.87(0.68,1.06)
South America	Ecuador	2003–2012	25.45(24.21,26.68)	1.45(1.16,1.75)	24.00(22.80,25.20)	2.31(1.90,2.72)	1.69(1.33,2.05)	0.58(0.39,0.78)
South America	Ecuador	2003-2007	24.24(22.66,25.82)	1.26(0.90,1.63)	22.97(21.43,24.51)	2.47(1.92,3.02)	1.95(1.47,2.44)	0.45(0.20,0.69)
South America	Ecuador	2008–2012	21.30(19.91,22.69)	1.32(0.97,1.68)	19.98(18.64,21.32)	1.71(1.28,2.14)	1.03(0.69,1.36)	0.68(0.40,0.96)

Note: ESCC, esophageal squamous cell carcinoma; EAC, esophageal adenocarcinoma; GCC, gastric cardia cancer; GNCC, gastric non-cardia cancer

*Using Segi's World Standard Population as reference

Supplementary Table 3. National estimations of age-standardized incidence rates and 95%CIs for esophageal cancer and gastric cancer in females, overall and by subtype and subsite (2003-2012)

World region	Country	Period	Age-standardized incidence rate (95%CIs)					
			Gastric cancer	GCC	GNCC	Esophageal cancer	ESCC	EAC
Total	Total	2003–2012	6.67(6.65,6.69)	0.64(0.63,0.65)	6.03(6.01,6.05)	1.49(1.48,1.50)	1.00(0.99,1.00)	0.44(0.44,0.45)
Total	Total	2003-2007	6.88(6.85,6.91)	0.65(0.64,0.66)	6.23(6.20,6.26)	1.52(1.51,1.54)	1.04(1.02,1.05)	0.44(0.43,0.45)
Total	Total	2008–2012	6.49(6.46,6.52)	0.63(0.62,0.64)	5.86(5.83,5.88)	1.46(1.44,1.47)	0.96(0.95,0.97)	0.45(0.44,0.45)
Total	Portugal	2003–2012	8.56(7.12,9.99)	0.37(0.08,0.66)	8.18(6.78,9.59)			
Total	Portugal	2003-2007	8.82(6.83,10.81)	0.59(0.07,1.10)	8.23(6.31,10.15)			
Total	Portugal	2008–2012	8.20(6.14,10.25)	0.12(0.00,0.28)	8.08(6.03,10.12)			
Northern America	Canada	2003–2012	3.10(3.02,3.18)	0.61(0.57,0.64)	2.49(2.43,2.56)	1.23(1.18,1.28)	0.71(0.67,0.75)	0.48(0.45,0.51)
Northern America	Canada	2003-2007	3.16(3.04,3.27)	0.56(0.51,0.61)	2.60(2.49,2.70)	1.22(1.15,1.29)	0.74(0.69,0.79)	0.44(0.40,0.48)
Northern America	Canada	2008–2012	3.05(2.95,3.16)	0.64(0.60,0.69)	2.41(2.32,2.50)	1.24(1.18,1.31)	0.68(0.64,0.73)	0.51(0.47,0.55)
Northern America	USA	2003–2012	2.87(2.84,2.89)	0.50(0.49,0.51)	2.37(2.35,2.39)	1.18(1.17,1.20)	0.65(0.64,0.66)	0.49(0.49,0.50)
Northern America	USA	2003-2007	2.91(2.87,2.94)	0.49(0.48,0.50)	2.42(2.39,2.45)	1.25(1.23,1.27)	0.71(0.69,0.72)	0.50(0.49,0.52)
Northern America	USA	2008–2012	2.83(2.80,2.87)	0.51(0.49,0.52)	2.33(2.30,2.36)	1.13(1.11,1.15)	0.61(0.59,0.62)	0.49(0.47,0.50)
Eastern Asia	China	2003–2012	10.41(10.28,10.53)	1.17(1.12,1.21)	9.24(9.12,9.36)	4.19(4.10,4.28)	3.93(3.84,4.01)	0.19(0.17,0.21)
Eastern Asia	China	2003-2007	11.10(10.90,11.30)	1.31(1.24,1.38)	9.79(9.61,9.97)	4.73(4.59,4.87)	4.48(4.35,4.62)	0.16(0.14,0.19)
Eastern Asia	China	2008–2012	9.82(9.65,9.99)	1.06(1.00,1.12)	8.76(8.60,8.93)	3.75(3.64,3.87)	3.48(3.37,3.59)	0.21(0.19,0.24)
Eastern Asia	Japan	2003–2012	20.28(20.09,20.48)	0.99(0.95,1.04)	19.29(19.10,19.48)	1.89(1.83,1.95)	1.76(1.70,1.82)	0.07(0.06,0.08)
Eastern Asia	Japan	2003-2007	20.47(20.16,20.77)	0.97(0.90,1.04)	19.50(19.20,19.79)	1.76(1.67,1.85)	1.62(1.53,1.70)	0.07(0.06,0.09)
Eastern Asia	Japan	2008–2012	20.12(19.86,20.38)	1.00(0.94,1.06)	19.12(18.86,19.37)	1.98(1.90,2.06)	1.87(1.79,1.95)	0.07(0.06,0.08)
Eastern Asia	Republic of Korea	2003–2012	25.23(25.06,25.40)	0.79(0.76,0.81)	24.44(24.28,24.61)	0.47(0.45,0.49)	0.40(0.38,0.42)	0.04(0.04,0.05)
Eastern Asia	Republic of Korea	2003-2007	25.42(25.18,25.67)	0.79(0.74,0.83)	24.64(24.40,24.88)	0.49(0.46,0.53)	0.42(0.39,0.45)	0.05(0.04,0.06)
Eastern Asia	Republic of Korea	2008–2012	25.03(24.81,25.26)	0.78(0.74,0.82)	24.25(24.03,24.48)	0.45(0.42,0.48)	0.39(0.36,0.42)	0.03(0.03,0.04)

South-Eastern Asia	Thailand	2003–2012	2.91(2.66,3.17)	0.26(0.18,0.34)	2.65(2.41,2.90)	0.57(0.51,0.62)	0.49(0.44,0.54)	0.04(0.03,0.06)
South-Eastern Asia	Thailand	2003–2007	3.17(2.76,3.58)	0.28(0.15,0.40)	2.89(2.51,3.28)	0.63(0.55,0.71)	0.53(0.45,0.61)	0.05(0.03,0.07)
South-Eastern Asia	Thailand	2008–2012	2.73(2.40,3.06)	0.25(0.15,0.35)	2.48(2.17,2.79)	0.51(0.43,0.58)	0.45(0.38,0.52)	0.04(0.02,0.06)
South-Central Asia	India	2003–2012	3.76(3.61,3.92)	0.33(0.28,0.37)	3.43(3.29,3.58)	3.84(3.73,3.95)	3.68(3.57,3.79)	0.14(0.12,0.16)
South-Central Asia	India	2003–2007	3.82(3.59,4.06)	0.28(0.22,0.35)	3.54(3.31,3.76)	4.08(3.89,4.26)	3.92(3.74,4.09)	0.15(0.11,0.18)
South-Central Asia	India	2008–2012	3.71(3.51,3.92)	0.36(0.30,0.43)	3.35(3.16,3.55)	3.67(3.52,3.82)	3.51(3.37,3.66)	0.14(0.11,0.16)
Western Asia	Cyprus	2003–2012	4.18(3.67,4.69)	0.22(0.10,0.34)	3.96(3.47,4.46)	0.39(0.23,0.55)	0.30(0.16,0.44)	0.09(0.01,0.16)
Western Asia	Cyprus	2003–2007	3.46(2.76,4.15)	0.13(0.00,0.27)	3.33(2.65,4.01)	0.34(0.12,0.55)	0.23(0.04,0.41)	0.11(0.00,0.23)
Western Asia	Cyprus	2008–2012	4.81(4.07,5.54)	0.30(0.12,0.49)	4.50(3.79,5.22)	0.43(0.20,0.65)	0.37(0.16,0.58)	0.06(0.00,0.14)
Western Asia	Israel	2003–2012	5.79(5.56,6.01)	0.71(0.63,0.78)	5.08(4.87,5.29)	0.93(0.84,1.02)	0.68(0.61,0.76)	0.22(0.18,0.26)
Western Asia	Israel	2003–2007	5.92(5.60,6.25)	0.75(0.63,0.87)	5.17(4.87,5.48)	0.96(0.84,1.09)	0.69(0.58,0.79)	0.25(0.19,0.32)
Western Asia	Israel	2008–2012	5.31(5.02,5.60)	0.62(0.52,0.71)	4.69(4.42,4.97)	0.80(0.69,0.90)	0.60(0.51,0.69)	0.17(0.12,0.22)
Western Asia	Saudi Arabia	2003–2012	2.30(2.00,2.59)	0.33(0.21,0.44)	1.97(1.70,2.24)	1.23(1.00,1.45)	1.00(0.80,1.21)	0.22(0.13,0.30)
Western Asia	Saudi Arabia	2003–2007	2.43(1.95,2.90)	0.39(0.20,0.58)	2.04(1.60,2.47)	1.36(0.99,1.73)	1.20(0.85,1.55)	0.16(0.04,0.29)
Western Asia	Saudi Arabia	2008–2012	2.20(1.83,2.58)	0.27(0.14,0.41)	1.93(1.58,2.28)	1.10(0.83,1.37)	0.85(0.60,1.09)	0.24(0.13,0.36)
Western Asia	Turkey	2003–2012	7.10(6.83,7.37)	0.93(0.84,1.03)	6.17(5.91,6.42)	1.28(1.16,1.40)	1.11(1.00,1.22)	0.14(0.10,0.18)
Western Asia	Turkey	2003–2007	7.33(6.92,7.73)	0.87(0.72,1.01)	6.46(6.08,6.84)	1.40(1.22,1.59)	1.29(1.12,1.47)	0.10(0.04,0.15)
Western Asia	Turkey	2008–2012	6.79(6.44,7.14)	0.97(0.84,1.11)	5.82(5.50,6.14)	1.17(1.02,1.32)	0.98(0.84,1.11)	0.16(0.10,0.21)
Eastern Europe	Belarus	2003–2012	13.16(12.92,13.40)	0.62(0.57,0.68)	12.54(12.30,12.77)	0.38(0.34,0.42)	0.28(0.25,0.32)	0.09(0.07,0.11)
Eastern Europe	Belarus	2003–2007	13.79(13.43,14.14)	0.67(0.59,0.75)	13.12(12.77,13.46)	0.39(0.33,0.45)	0.28(0.23,0.33)	0.11(0.08,0.14)
Eastern Europe	Belarus	2008–2012	12.54(12.20,12.87)	0.57(0.50,0.64)	11.97(11.64,12.29)	0.36(0.30,0.41)	0.28(0.23,0.33)	0.07(0.05,0.09)
Eastern Europe	Bulgaria	2003–2012	6.92(6.73,7.11)	0.60(0.54,0.66)	6.32(6.14,6.50)	0.45(0.40,0.50)	0.34(0.29,0.38)	0.10(0.08,0.12)
Eastern Europe	Bulgaria	2003–2007	7.30(7.03,7.58)	0.53(0.45,0.60)	6.78(6.52,7.04)	0.42(0.36,0.49)	0.30(0.24,0.35)	0.12(0.09,0.15)
Eastern Europe	Bulgaria	2008–2012	6.58(6.32,6.84)	0.68(0.59,0.76)	5.90(5.66,6.15)	0.48(0.41,0.55)	0.38(0.31,0.44)	0.08(0.06,0.11)
Eastern Europe	Czech Republic	2003–2012	5.70(5.55,5.85)	0.50(0.45,0.54)	5.20(5.06,5.35)	0.86(0.80,0.92)	0.58(0.53,0.63)	0.26(0.22,0.29)
Eastern Europe	Czech Republic	2003–2007	5.98(5.76,6.20)	0.49(0.43,0.55)	5.49(5.27,5.70)	0.77(0.69,0.85)	0.52(0.45,0.59)	0.23(0.19,0.27)

Eastern Europe	Czech Republic	2008–2012	5.45(5.25,5.66)	0.50(0.44,0.56)	4.95(4.76,5.15)	0.95(0.87,1.04)	0.64(0.57,0.71)	0.28(0.24,0.33)
Eastern Europe	Poland	2003–2012	5.55(5.33,5.78)	0.39(0.33,0.45)	5.16(4.95,5.38)	0.61(0.55,0.68)	0.52(0.46,0.58)	0.08(0.06,0.11)
Eastern Europe	Poland	2003–2007	5.84(5.51,6.17)	0.40(0.31,0.49)	5.44(5.13,5.76)	0.61(0.52,0.71)	0.50(0.41,0.58)	0.10(0.06,0.14)
Eastern Europe	Poland	2008–2012	5.32(5.01,5.62)	0.37(0.29,0.45)	4.94(4.65,5.24)	0.62(0.53,0.71)	0.55(0.46,0.64)	0.07(0.04,0.10)
Eastern Europe	Slovakia	2003–2012	7.31(7.03,7.58)	0.61(0.53,0.69)	6.70(6.43,6.96)	0.66(0.57,0.75)	0.54(0.46,0.62)	0.11(0.08,0.15)
Eastern Europe	Slovakia	2003–2007	7.36(7.00,7.72)	0.62(0.52,0.73)	6.74(6.40,7.08)	0.65(0.54,0.76)	0.54(0.44,0.64)	0.11(0.07,0.15)
Eastern Europe	Slovakia	2008–2012	7.19(6.75,7.64)	0.58(0.45,0.71)	6.61(6.19,7.04)	0.67(0.53,0.81)	0.54(0.41,0.66)	0.12(0.06,0.18)
Eastern Europe	Ukraine	2003–2012	9.88(9.78,9.97)	0.84(0.81,0.87)	9.04(8.95,9.13)	0.42(0.40,0.44)	0.29(0.27,0.30)	0.13(0.12,0.14)
Eastern Europe	Ukraine	2003–2007	10.54(10.40,10.68)	0.91(0.87,0.96)	9.63(9.49,9.76)	0.43(0.40,0.45)	0.27(0.25,0.29)	0.15(0.13,0.16)
Eastern Europe	Ukraine	2008–2012	9.18(9.05,9.31)	0.76(0.72,0.79)	8.43(8.30,8.55)	0.41(0.38,0.44)	0.30(0.28,0.32)	0.11(0.10,0.12)
Northern Europe	Denmark	2003–2012	3.22(3.06,3.38)	0.89(0.80,0.97)	2.33(2.20,2.47)	2.08(1.96,2.21)	1.34(1.23,1.44)	0.67(0.60,0.74)
Northern Europe	Denmark	2003–2007	3.45(3.21,3.69)	0.91(0.78,1.03)	2.54(2.34,2.75)	2.07(1.89,2.25)	1.36(1.21,1.51)	0.64(0.54,0.74)
Northern Europe	Denmark	2008–2012	3.02(2.80,3.23)	0.87(0.76,0.98)	2.15(1.97,2.33)	2.09(1.92,2.27)	1.31(1.17,1.46)	0.70(0.60,0.80)
Northern Europe	Estonia	2003–2012	10.80(10.23,11.37)	0.63(0.50,0.77)	10.17(9.61,10.72)	0.68(0.55,0.82)	0.59(0.46,0.72)	0.08(0.03,0.12)
Northern Europe	Estonia	2003–2007	11.72(10.87,12.56)	0.71(0.51,0.92)	11.00(10.18,11.82)	0.64(0.45,0.83)	0.55(0.38,0.73)	0.08(0.02,0.15)
Northern Europe	Estonia	2008–2012	9.84(9.08,10.61)	0.56(0.39,0.74)	9.28(8.54,10.02)	0.72(0.52,0.92)	0.61(0.43,0.80)	0.07(0.02,0.12)
Northern Europe	Iceland	2003–2012	4.63(3.74,5.52)	0.39(0.14,0.63)	4.25(3.39,5.10)	1.48(1.00,1.96)	0.81(0.46,1.16)	0.60(0.29,0.90)
Northern Europe	Iceland	2003–2007	5.01(3.67,6.35)	0.51(0.10,0.93)	4.49(3.22,5.77)	1.77(0.97,2.57)	0.91(0.36,1.46)	0.73(0.20,1.26)
Northern Europe	Iceland	2008–2012	4.29(3.10,5.47)	0.27(0.00,0.54)	4.02(2.86,5.17)	1.22(0.66,1.79)	0.71(0.27,1.15)	0.48(0.13,0.82)
Northern Europe	Ireland	2003–2012	4.95(4.71,5.20)	1.25(1.13,1.37)	3.70(3.49,3.91)	3.38(3.18,3.58)	2.21(2.05,2.38)	1.05(0.94,1.16)
Northern Europe	Ireland	2003–2007	4.98(4.62,5.34)	1.13(0.96,1.30)	3.85(3.53,4.17)	3.50(3.20,3.79)	2.33(2.09,2.57)	1.08(0.92,1.25)
Northern Europe	Ireland	2008–2012	4.93(4.60,5.27)	1.36(1.19,1.53)	3.57(3.29,3.86)	3.28(3.01,3.55)	2.10(1.89,2.32)	1.03(0.88,1.18)
Northern Europe	Latvia	2003–2012	9.85(9.35,10.34)	0.26(0.18,0.34)	9.58(9.09,10.07)	0.68(0.55,0.80)	0.57(0.45,0.69)	0.08(0.04,0.12)
Northern Europe	Latvia	2003–2007	10.56(9.89,11.23)	0.23(0.13,0.32)	10.33(9.67,11.00)	0.77(0.60,0.95)	0.65(0.49,0.82)	0.10(0.04,0.16)
Northern Europe	Latvia	2008–2012	8.92(8.17,9.66)	0.31(0.17,0.46)	8.60(7.87,9.34)	0.55(0.37,0.73)	0.46(0.29,0.62)	0.05(0.01,0.09)
Northern Europe	Lithuania	2003–2012	10.19(9.83,10.55)	0.29(0.23,0.35)	9.90(9.55,10.26)	0.75(0.65,0.85)	0.59(0.50,0.68)	0.14(0.10,0.18)

Northern Europe	Lithuania	2003–2007	10.39(9.88,10.89)	0.30(0.21,0.39)	10.08(9.58,10.58)	0.67(0.54,0.80)	0.53(0.41,0.65)	0.12(0.07,0.16)
Northern Europe	Lithuania	2008–2012	10.05(9.53,10.56)	0.28(0.19,0.36)	9.77(9.26,10.28)	0.84(0.69,0.99)	0.66(0.52,0.80)	0.16(0.10,0.22)
Northern Europe	Norway	2003–2012	3.78(3.59,3.97)	0.59(0.51,0.67)	3.18(3.01,3.36)	1.11(1.00,1.21)	0.63(0.55,0.71)	0.44(0.37,0.50)
Northern Europe	Norway	2003–2007	4.18(3.89,4.47)	0.65(0.53,0.77)	3.54(3.27,3.80)	1.03(0.89,1.18)	0.63(0.52,0.75)	0.36(0.28,0.44)
Northern Europe	Norway	2008–2012	3.40(3.15,3.64)	0.54(0.44,0.64)	2.86(2.63,3.08)	1.17(1.03,1.32)	0.62(0.51,0.73)	0.51(0.41,0.60)
Northern Europe	UK	2003–2012	3.50(3.45,3.55)	0.74(0.71,0.76)	2.76(2.72,2.81)	3.57(3.52,3.62)	2.02(1.98,2.06)	1.41(1.38,1.44)
Northern Europe	UK	2003–2007	3.77(3.70,3.84)	0.80(0.77,0.84)	2.97(2.90,3.03)	3.62(3.55,3.70)	2.12(2.06,2.17)	1.37(1.33,1.41)
Northern Europe	UK	2008–2012	3.24(3.18,3.31)	0.67(0.64,0.70)	2.57(2.52,2.63)	3.52(3.45,3.59)	1.93(1.88,1.98)	1.45(1.41,1.49)
Southern Europe	Italy	2003–2012	6.97(6.84,7.10)	0.43(0.40,0.46)	6.54(6.42,6.66)	0.79(0.75,0.84)	0.61(0.57,0.65)	0.14(0.13,0.16)
Southern Europe	Italy	2003–2007	7.52(7.33,7.72)	0.44(0.39,0.49)	7.08(6.90,7.27)	0.82(0.76,0.89)	0.63(0.57,0.69)	0.13(0.11,0.16)
Southern Europe	Italy	2008–2012	6.50(6.33,6.66)	0.42(0.38,0.46)	6.08(5.92,6.24)	0.77(0.71,0.83)	0.59(0.54,0.64)	0.15(0.13,0.18)
Southern Europe	Malta	2003–2012	4.01(3.38,4.64)	0.35(0.17,0.53)	3.66(3.05,4.27)	0.81(0.54,1.07)	0.46(0.27,0.66)	0.30(0.13,0.47)
Southern Europe	Malta	2003–2007	4.08(3.17,4.99)	0.36(0.10,0.63)	3.72(2.84,4.59)	0.88(0.46,1.30)	0.69(0.32,1.05)	0.19(0.00,0.41)
Southern Europe	Malta	2008–2012	3.94(3.07,4.82)	0.33(0.08,0.57)	3.61(2.77,4.45)	0.76(0.40,1.12)	0.27(0.08,0.45)	0.42(0.14,0.71)
Southern Europe	Slovenia	2003–2012	7.35(6.97,7.74)	0.72(0.60,0.85)	6.63(6.27,6.99)	0.68(0.56,0.80)	0.57(0.46,0.67)	0.08(0.04,0.12)
Southern Europe	Slovenia	2003–2007	7.63(7.07,8.19)	0.66(0.49,0.83)	6.97(6.44,7.51)	0.71(0.53,0.88)	0.59(0.43,0.75)	0.10(0.04,0.16)
Southern Europe	Slovenia	2008–2012	7.07(6.55,7.60)	0.78(0.60,0.97)	6.29(5.80,6.78)	0.66(0.50,0.82)	0.54(0.40,0.69)	0.06(0.02,0.10)
Southern Europe	Spain	2003–2012	5.20(5.05,5.35)	0.37(0.33,0.41)	4.83(4.68,4.97)	0.73(0.67,0.79)	0.53(0.48,0.59)	0.17(0.14,0.20)
Southern Europe	Spain	2003–2007	5.24(5.03,5.45)	0.37(0.32,0.43)	4.87(4.67,5.07)	0.67(0.60,0.75)	0.49(0.42,0.55)	0.17(0.13,0.20)
Southern Europe	Spain	2008–2012	5.15(4.93,5.36)	0.37(0.31,0.43)	4.78(4.57,4.99)	0.79(0.70,0.88)	0.59(0.51,0.66)	0.18(0.14,0.21)
Western Europe	Austria	2003–2012	5.60(5.43,5.76)	0.47(0.42,0.52)	5.13(4.97,5.28)	0.89(0.82,0.96)	0.61(0.55,0.66)	0.26(0.23,0.30)
Western Europe	Austria	2003–2007	6.16(5.91,6.41)	0.44(0.38,0.51)	5.71(5.48,5.95)	0.84(0.75,0.94)	0.60(0.51,0.68)	0.23(0.18,0.28)
Western Europe	Austria	2008–2012	5.06(4.84,5.28)	0.49(0.42,0.56)	4.57(4.36,4.78)	0.93(0.83,1.02)	0.61(0.53,0.69)	0.29(0.24,0.35)
Western Europe	Belgium	2003–2012	4.01(3.88,4.15)	0.59(0.54,0.64)	3.42(3.30,3.55)	2.03(1.93,2.12)	1.45(1.37,1.54)	0.50(0.46,0.55)
Western Europe	Belgium	2003–2007	3.91(3.71,4.11)	0.53(0.46,0.61)	3.38(3.19,3.57)	2.06(1.91,2.21)	1.42(1.30,1.55)	0.54(0.47,0.62)
Western Europe	Belgium	2008–2012	4.09(3.91,4.27)	0.64(0.56,0.71)	3.45(3.28,3.62)	2.00(1.88,2.13)	1.48(1.37,1.59)	0.47(0.42,0.53)

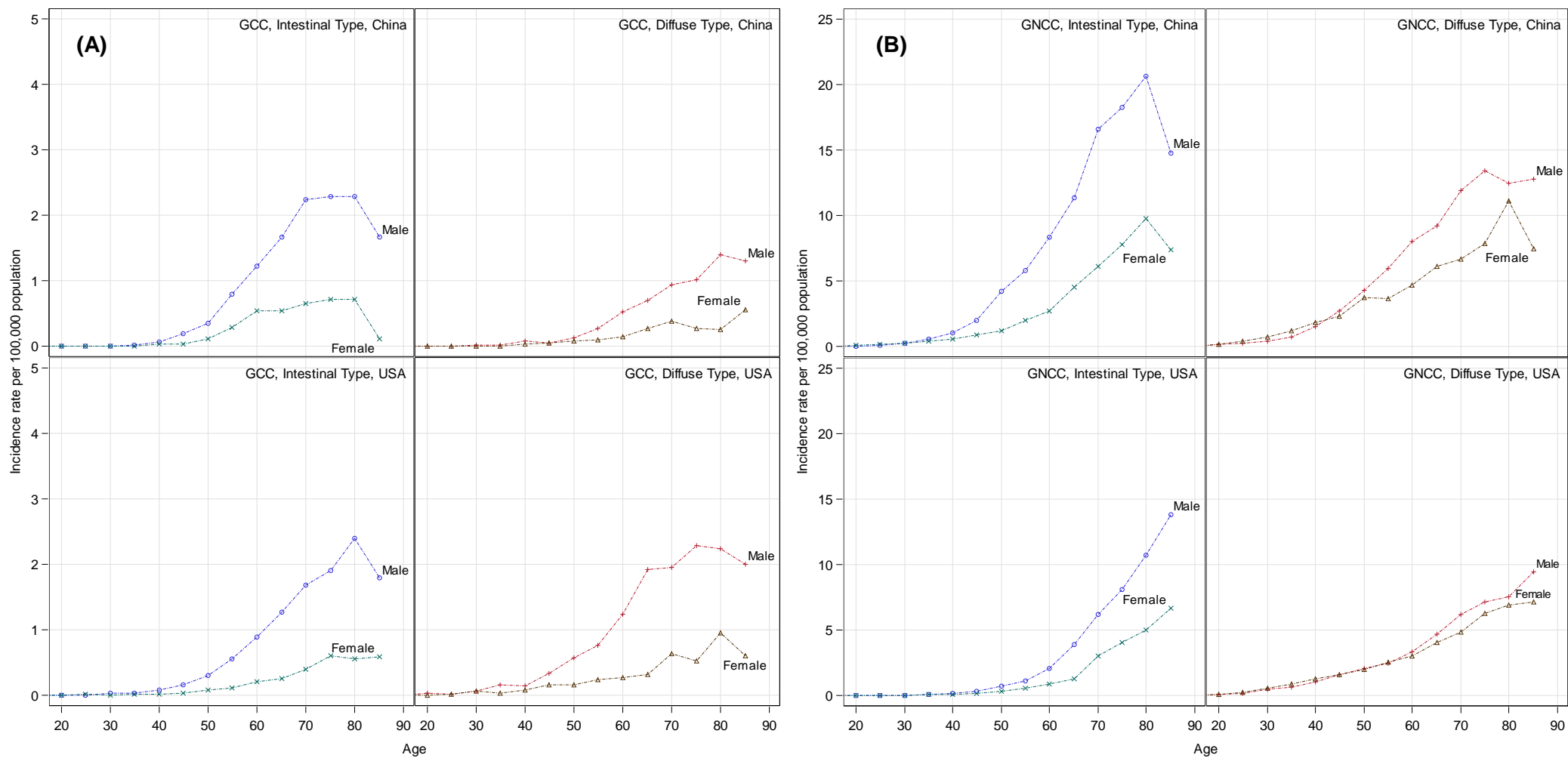
Western Europe	France	2003–2012	3.29(3.16,3.42)	0.42(0.38,0.47)	2.87(2.75,2.99)	1.32(1.24,1.41)	1.05(0.98,1.13)	0.24(0.21,0.28)
Western Europe	France	2003–2007	3.28(3.10,3.46)	0.33(0.27,0.38)	2.95(2.78,3.13)	1.30(1.18,1.42)	1.06(0.95,1.17)	0.22(0.18,0.26)
Western Europe	France	2008–2012	3.30(3.12,3.48)	0.51(0.44,0.58)	2.79(2.62,2.95)	1.34(1.23,1.46)	1.05(0.95,1.15)	0.27(0.22,0.31)
Western Europe	Germany	2003–2012	5.98(5.83,6.13)	0.82(0.77,0.87)	5.16(5.02,5.29)	1.57(1.49,1.65)	1.13(1.06,1.20)	0.39(0.35,0.43)
Western Europe	Germany	2003–2007	6.41(6.19,6.63)	0.78(0.71,0.86)	5.63(5.43,5.84)	1.55(1.44,1.67)	1.22(1.11,1.32)	0.30(0.25,0.34)
Western Europe	Germany	2008–2012	5.60(5.40,5.80)	0.86(0.78,0.94)	4.74(4.56,4.92)	1.59(1.48,1.70)	1.05(0.96,1.14)	0.47(0.42,0.53)
Western Europe	Switzerland	2003–2012	3.75(3.54,3.95)	0.61(0.53,0.69)	3.13(2.95,3.32)	1.64(1.51,1.77)	1.24(1.12,1.36)	0.37(0.31,0.42)
Western Europe	Switzerland	2003–2007	3.81(3.52,4.10)	0.62(0.50,0.74)	3.19(2.92,3.45)	1.61(1.42,1.80)	1.23(1.06,1.41)	0.36(0.28,0.44)
Western Europe	Switzerland	2008–2012	3.69(3.41,3.98)	0.60(0.49,0.72)	3.09(2.83,3.35)	1.67(1.49,1.85)	1.24(1.08,1.40)	0.37(0.29,0.45)
Western Europe	The Netherlands	2003–2012	4.07(3.97,4.18)	0.73(0.69,0.78)	3.34(3.25,3.43)	2.77(2.68,2.85)	1.49(1.42,1.55)	1.18(1.12,1.23)
Western Europe	The Netherlands	2003–2007	4.13(3.98,4.28)	0.74(0.67,0.80)	3.40(3.26,3.53)	2.58(2.46,2.70)	1.47(1.37,1.56)	1.02(0.95,1.09)
Western Europe	The Netherlands	2008–2012	4.02(3.87,4.16)	0.73(0.67,0.79)	3.29(3.16,3.42)	2.93(2.81,3.05)	1.50(1.42,1.59)	1.32(1.24,1.40)
Australia/New Zealand	Australia	2003–2012	3.32(3.24,3.41)	0.67(0.63,0.71)	2.65(2.58,2.73)	1.71(1.65,1.77)	1.14(1.10,1.19)	0.51(0.48,0.55)
Australia/New Zealand	Australia	2003–2007	3.42(3.29,3.55)	0.62(0.57,0.68)	2.80(2.69,2.92)	1.75(1.66,1.84)	1.18(1.11,1.26)	0.51(0.46,0.56)
Australia/New Zealand	Australia	2008–2012	3.24(3.12,3.36)	0.71(0.66,0.77)	2.52(2.42,2.63)	1.68(1.59,1.76)	1.11(1.04,1.18)	0.51(0.47,0.56)
Australia/New Zealand	New Zealand	2003–2012	3.75(3.54,3.97)	0.63(0.55,0.72)	3.12(2.92,3.31)	2.01(1.86,2.15)	1.27(1.16,1.39)	0.61(0.53,0.69)
Australia/New Zealand	New Zealand	2003–2007	4.00(3.68,4.32)	0.57(0.45,0.69)	3.43(3.13,3.73)	2.03(1.82,2.24)	1.29(1.12,1.46)	0.60(0.49,0.72)
Australia/New Zealand	New Zealand	2008–2012	3.52(3.23,3.81)	0.69(0.56,0.81)	2.84(2.58,3.10)	1.99(1.79,2.19)	1.26(1.10,1.42)	0.61(0.50,0.73)
South America	Argentina	2003–2012	5.01(4.58,5.44)	0.24(0.15,0.34)	4.77(4.35,5.18)	2.08(1.88,2.29)	1.66(1.48,1.85)	0.41(0.32,0.49)
South America	Argentina	2003–2007	5.06(4.44,5.68)	0.15(0.04,0.25)	4.91(4.30,5.52)	2.32(1.99,2.64)	1.82(1.53,2.11)	0.49(0.34,0.63)
South America	Argentina	2008–2012	4.97(4.38,5.57)	0.33(0.18,0.49)	4.64(4.07,5.21)	1.89(1.62,2.15)	1.53(1.28,1.77)	0.34(0.24,0.45)
South America	Brazil	2003–2012	8.15(7.52,8.77)	0.59(0.41,0.76)	7.56(6.96,8.16)	1.74(1.44,2.03)	1.68(1.39,1.97)	0.04(0.00,0.08)
South America	Brazil	2003–2007	10.49(9.38,11.60)	0.74(0.44,1.04)	9.75(8.68,10.81)	2.29(1.77,2.81)	2.29(1.77,2.81)	0.00(0.00,0.00)
South America	Brazil	2008–2012	6.95(6.15,7.76)	0.50(0.28,0.72)	6.45(5.67,7.23)	1.40(1.04,1.77)	1.30(0.95,1.66)	0.06(0.00,0.13)
South America	Chile	2003–2012	18.73(17.15,20.31)	1.35(0.92,1.78)	17.38(15.85,18.90)	4.86(4.02,5.69)	3.90(3.17,4.62)	0.33(0.16,0.51)
South America	Chile	2003–2007	16.02(14.27,17.76)	1.06(0.61,1.52)	14.95(13.27,16.64)	4.10(3.31,4.89)	3.02(2.37,3.67)	0.46(0.22,0.70)

South America	Chile	2008–2012	13.94(12.51,15.37)	1.11(0.69,1.54)	12.83(11.46,14.19)	2.80(2.26,3.33)	2.53(2.02,3.03)	0.15(0.02,0.27)
South America	Colombia	2003–2012	11.69(11.18,12.19)	0.61(0.50,0.73)	11.08(10.59,11.56)	1.22(1.07,1.37)	0.92(0.80,1.05)	0.25(0.19,0.32)
South America	Colombia	2003–2007	12.84(12.06,13.62)	0.69(0.51,0.87)	12.14(11.38,12.90)	1.46(1.22,1.70)	1.12(0.91,1.32)	0.28(0.17,0.38)
South America	Colombia	2008–2012	10.76(10.11,11.41)	0.54(0.40,0.69)	10.22(9.58,10.85)	1.02(0.84,1.20)	0.76(0.61,0.92)	0.23(0.15,0.32)
South America	Ecuador	2003–2012	17.63(16.74,18.53)	0.60(0.43,0.77)	17.03(16.16,17.91)	0.80(0.59,1.02)	0.53(0.36,0.70)	0.17(0.07,0.27)
South America	Ecuador	2003–2007	16.27(15.13,17.41)	0.36(0.18,0.54)	15.91(14.78,17.03)	0.70(0.41,0.99)	0.42(0.19,0.65)	0.26(0.09,0.43)
South America	Ecuador	2008–2012	14.87(13.85,15.89)	0.64(0.43,0.85)	14.23(13.24,15.23)	0.79(0.52,1.06)	0.51(0.30,0.72)	0.11(0.00,0.22)

Note: ESCC, esophageal squamous cell carcinoma; EAC, esophageal adenocarcinoma; GCC, gastric cardia cancer; GNCC, gastric non-cardia cancer

*Using Segi's World Standard Population as reference

Supplementary Figure 1. Trends of age-specific incidence rates of intestinal type and diffuse type of gastric cardia cancer and gastric non-cardia cancer in China and US (2003-2012)



Note: GCC, gastric cardia cancer; GNCC, gastric non-cardia cancer;
 Data source: 18 registries from Surveillance, Epidemiology, and End Results (SEER) in US and 22 registries from Chinese National Central Cancer Registry reporting 10 consecutive years of data on Laurén classification of gastric cancer from 2003 to 2012.