

Supplemental File 1. Lateral and (where available) wing pictures for representatives of each species or species group sequenced in this study. Lab code numbers for each wasp can be used in concert with Supplemental Table 1 to find additional collection details. Female wasps are shown except in cases where no females were reared. Though these individuals were destructively sampled, vouchers specimens from many of the same collections have been deposited in the Smithsonian or the Frost Entomological Museum at the Pennsylvania State University (Supplementary Table 1).

Acraspis erinacei - Wasp: 1202-002-1



Acraspis macrocarpae - Wasp: 638-001-001



Acraspis pezomachoides - Wasp: 1201-003-4A



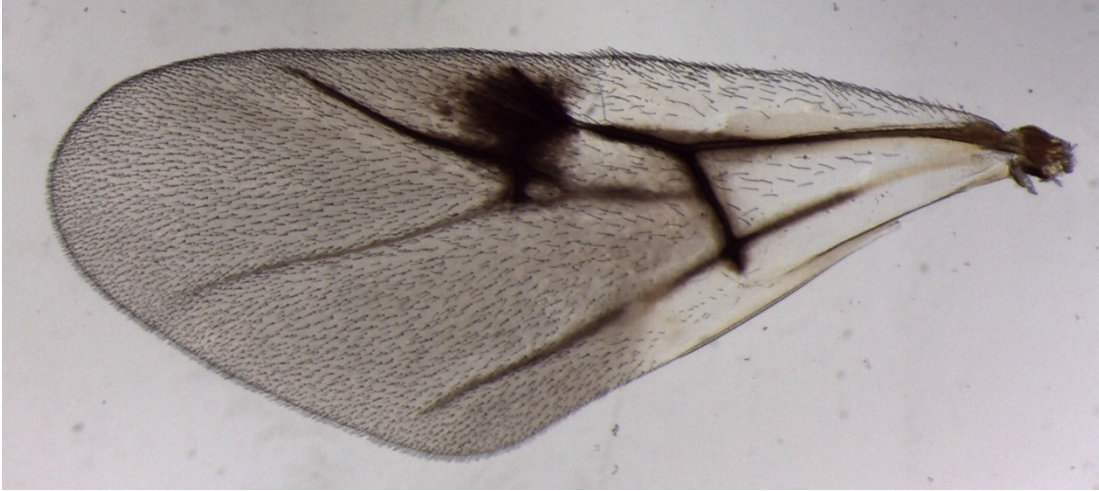
Acraspis villosa - Wasp: 609-004-001



Amphibolips cookii - Wasp: 1177-111-11



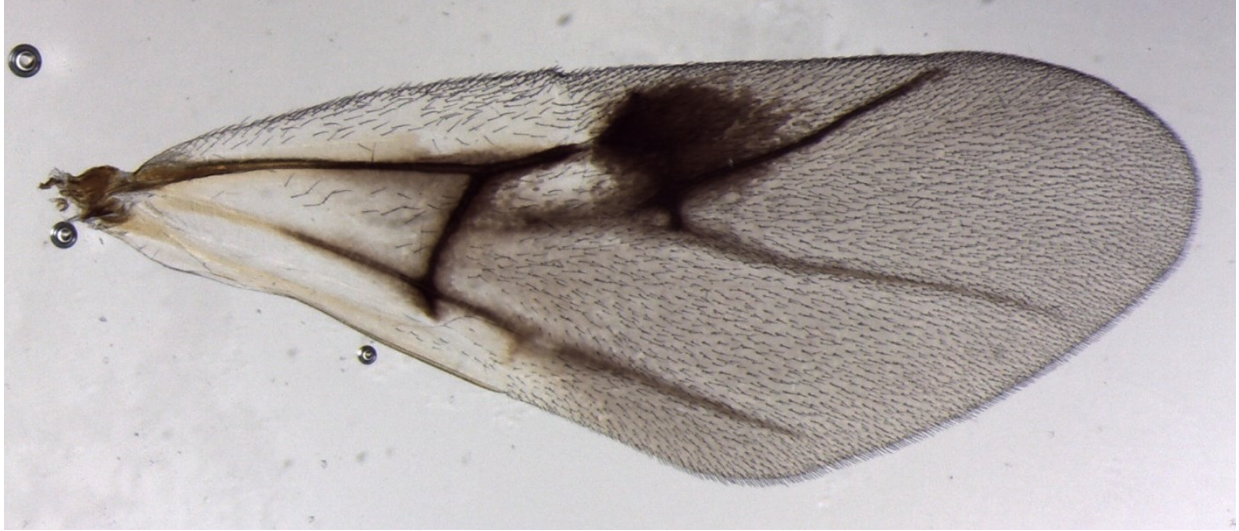
Amphibolips confluenta - Wasp: 818-046-5



Amphibolips nubilipennis - Wasp: 1222-050-1



Amphibolips quercusinanis - Wasp: 814-086-002



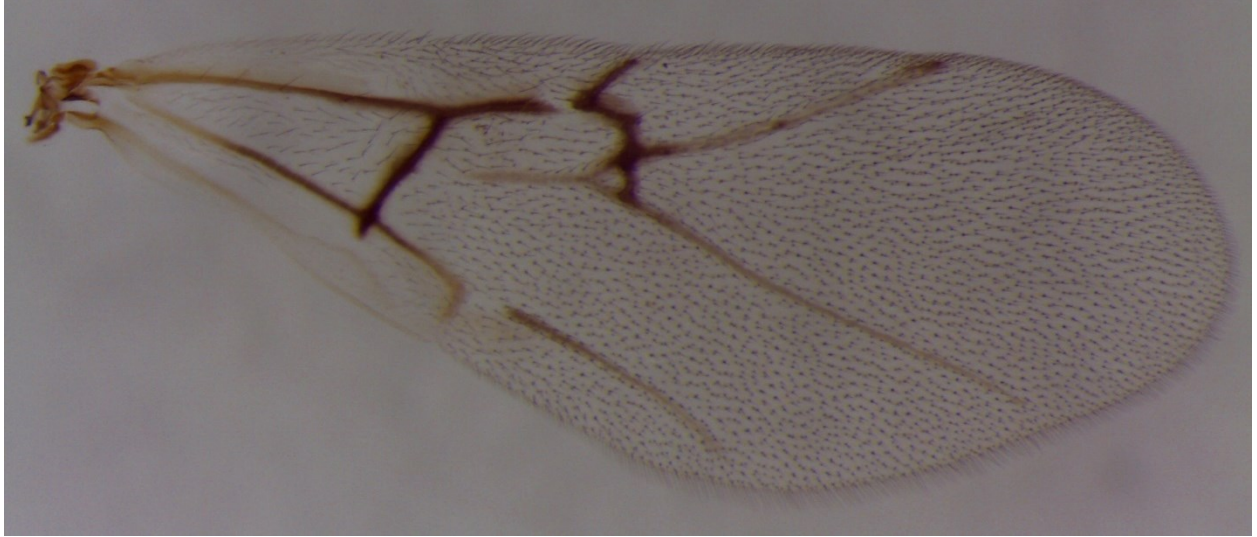
Amphibolips quercusjugulans - Wasp: 1195-110-8



Andricus biconicus - Wasp: 1520-150-5B



Andricus biconicus - Wasp: 538-066-9



Andricus brunneus- Wasp: 1494-139-3



Andricus chinquapin - Wasp: 765-030-001



Andricus coortus - Wasp: Ac_1



Andricus foliaformis - Wasp: 1324-001-1

(no wing picture)



Andricus kingi - Wasp: Ak_1



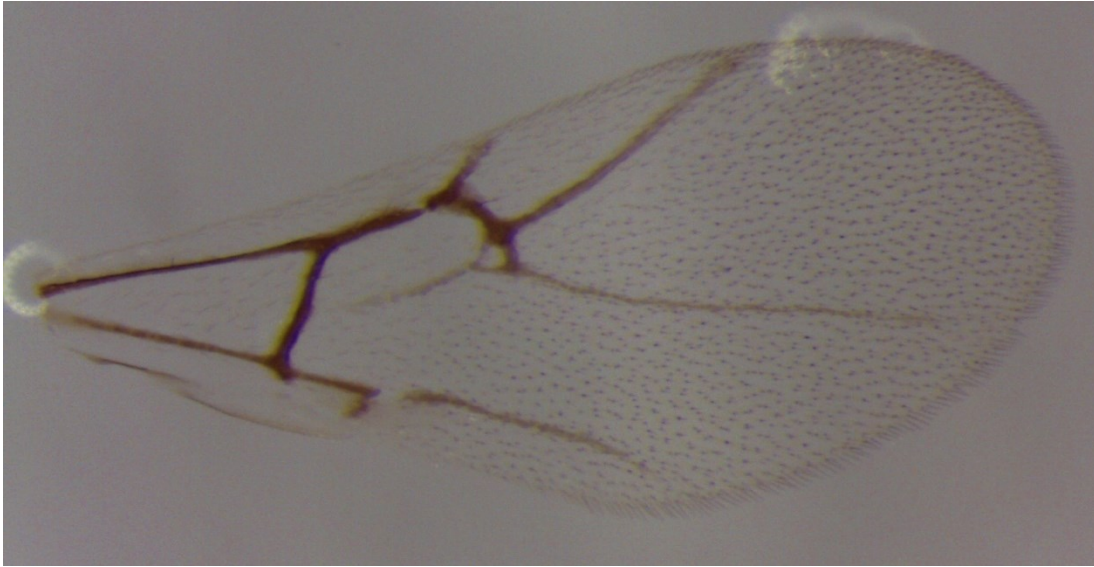
Andricus parmula - Wasp: 1480-136-1



Andricus pedicellatum - Wasp: Dp2



Andricus pisiformis - Wasp: 723-037-2



Andricus quercuscalifornicus - Wasp: 1470-130-5



Andricus quercusostensackenii - Wasp: 1617-166-1



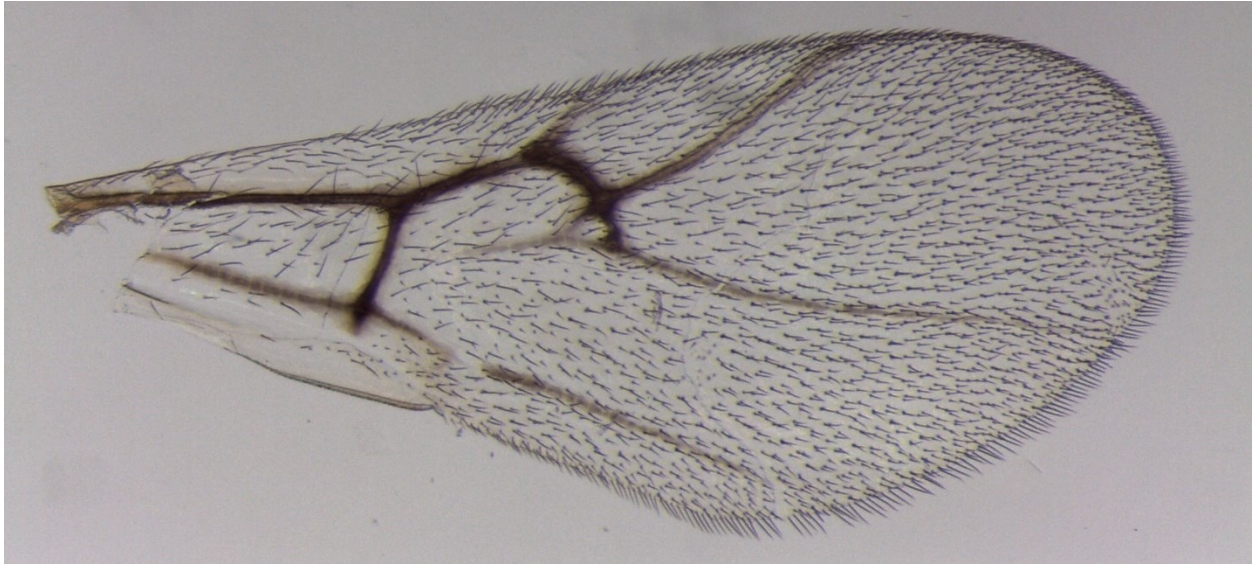
Andricus quercuspetiolicola - Wasp: 880-042-7A



Andricus quercustrobilanus - Wasp: 500-011-033



Andricus quercusutriculus - Wasp: 778-040-001



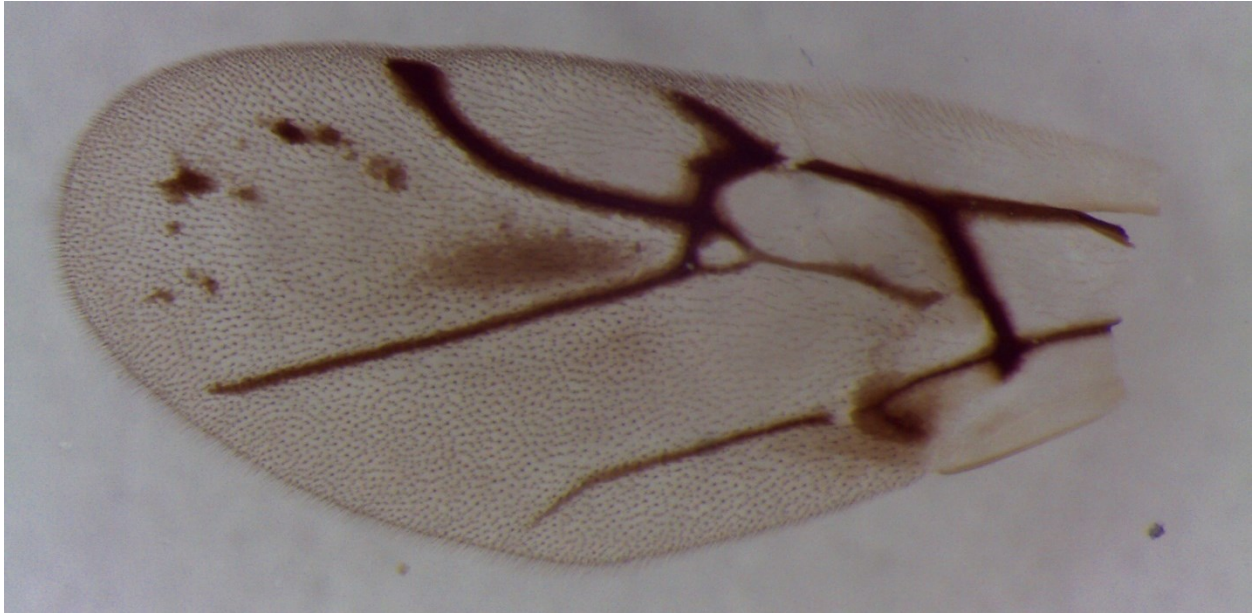
Atrusca bella - Wasp: 1688-212-3



Atrusca brevipennata - Wasp: 1645-169-1A



Atrusca quercuscentricola - Wasp: 1092-065-1



Bassettia pallida - Wasp: LZ6437_2



Belonocnema fossoria - Wasp: LZ_4370



Belonocnema treatae - Wasp: LZ_4348



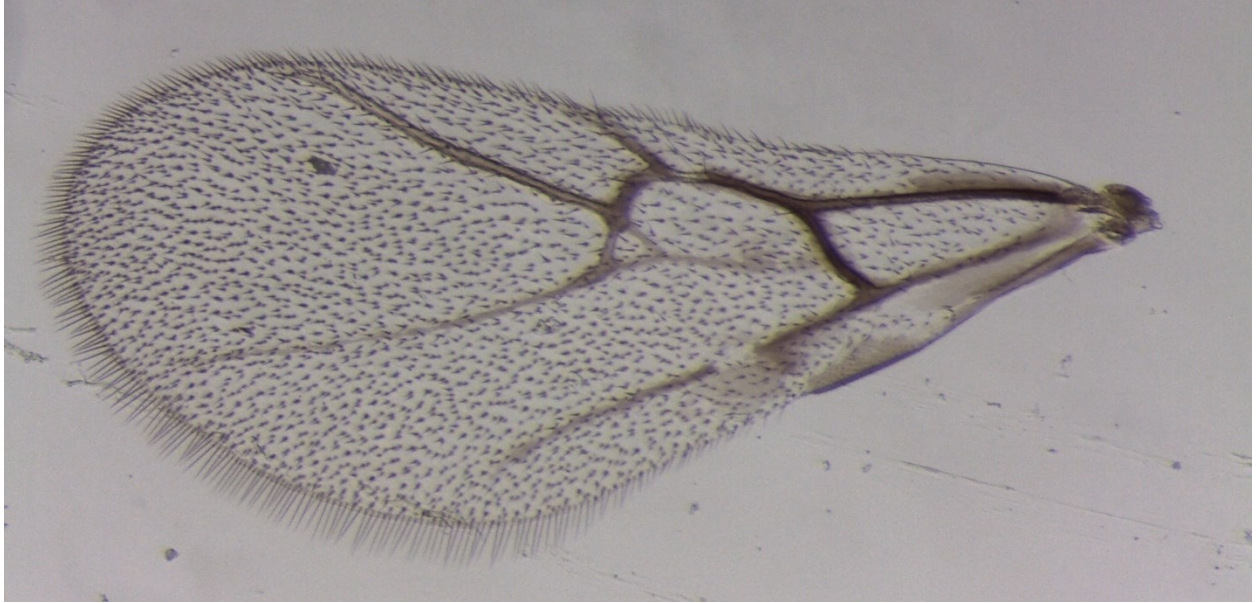
Burnettweldia washingtonensis - Wasp: Bc_1



Callirhytis attigua - Wasp: 1579-154-10



Callirhytis exigua - Wasp: 711-085-001A



Callirhytis flavipes - Wasp: 881-013-1 (MALE)

(no wing picture)



Callirhytis glandulus - Wasp: 1013-098-1



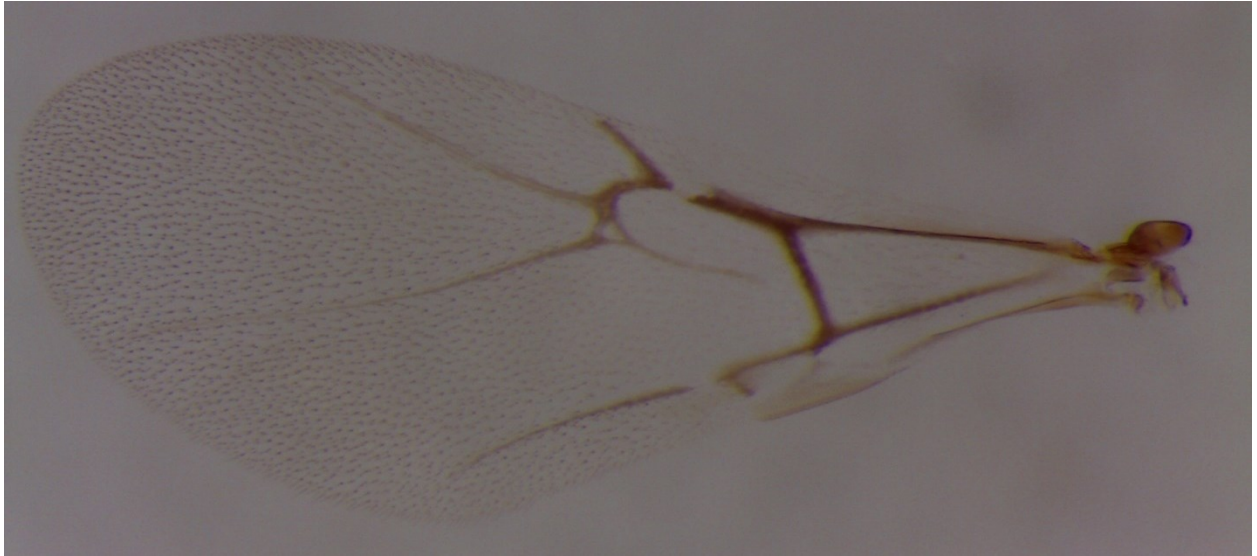
Callirhytis pigra- Wasp: 1574-104-3A (MALE)



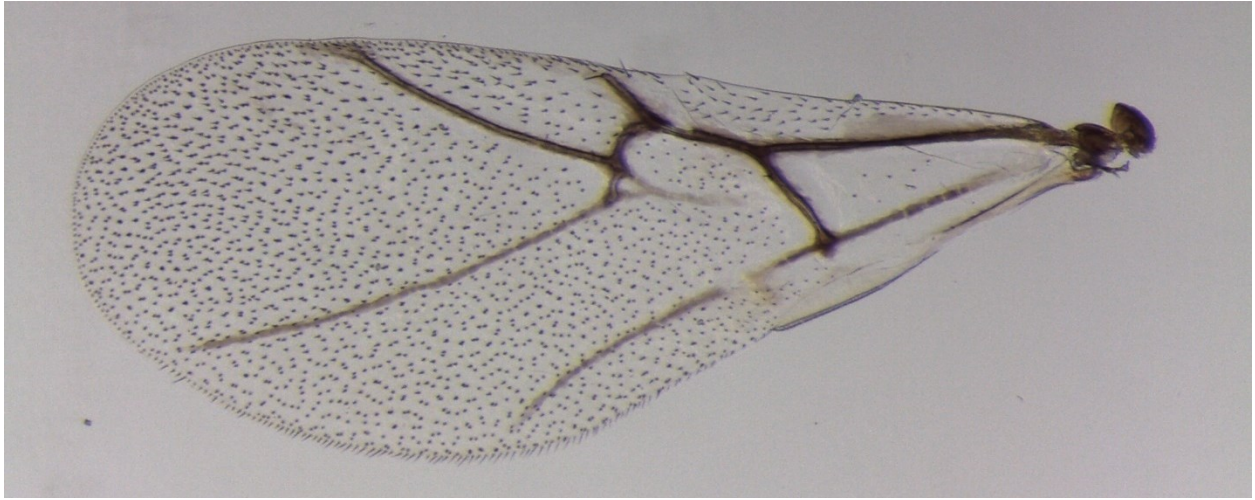
Callirhytis pulchra - Wasp: 1604-165-4A



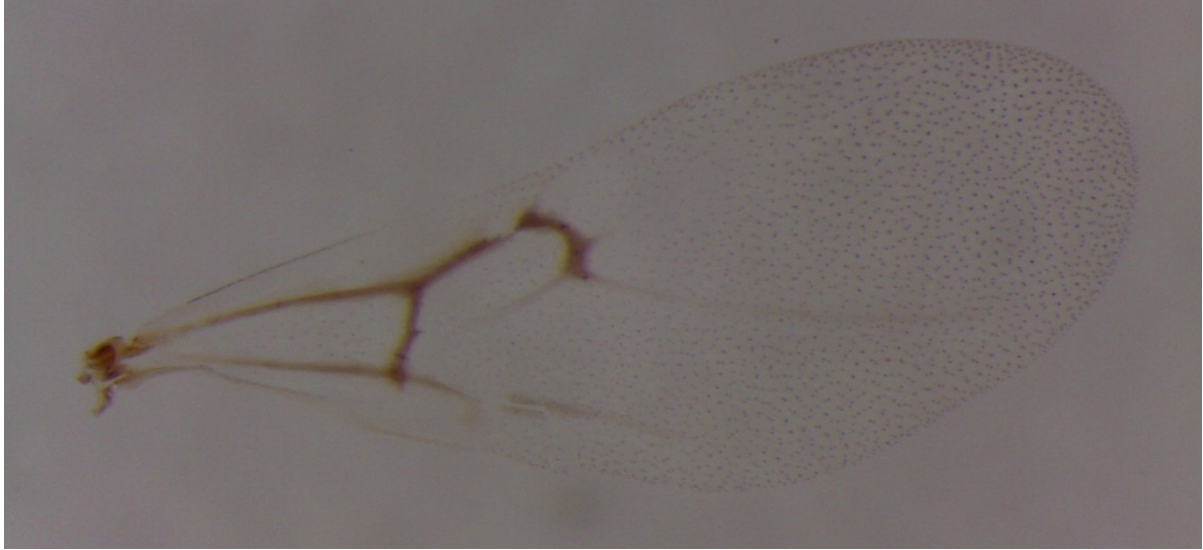
Callirhytis quercuscornigera - Wasp: 789-070-27A



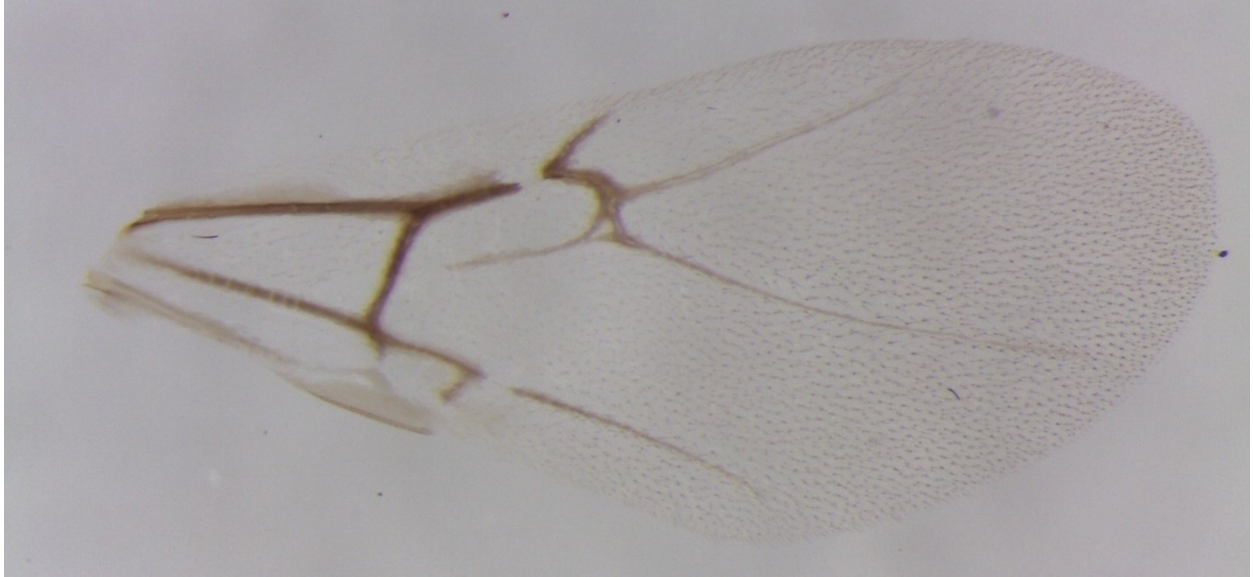
Callirhytis quercusfutilis - Wasp: 865-051-001A



Callirhytis quercusoperator - Wasp: 1344-123-17A



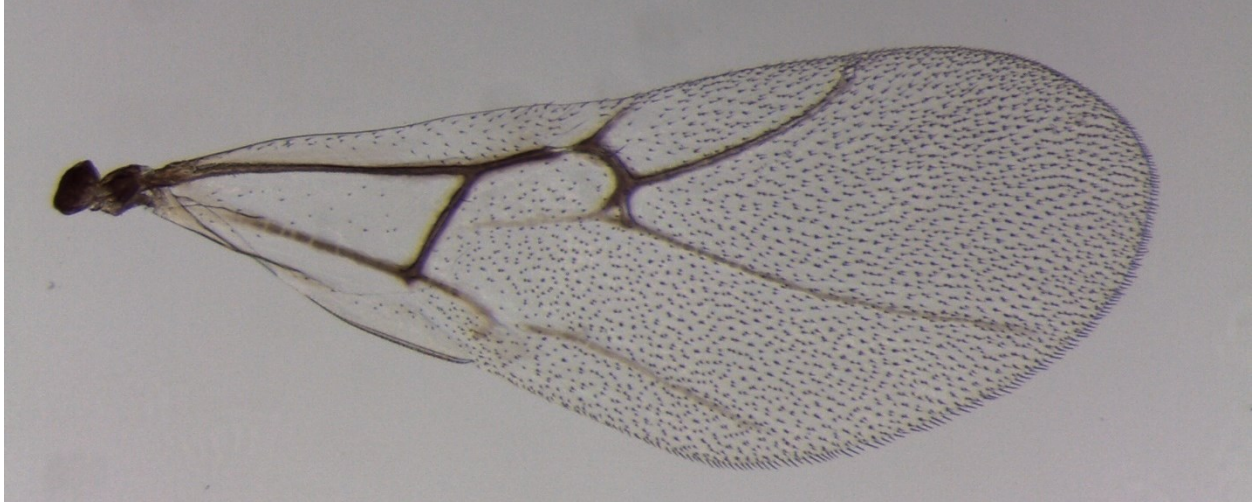
Callirhytis quercuspunctata - Wasp: 847-069-4A



Callirhytis quercusventricosa - Wasp: 1404-041-4



Callirhytis scitula - Wasp: 872-049-001A

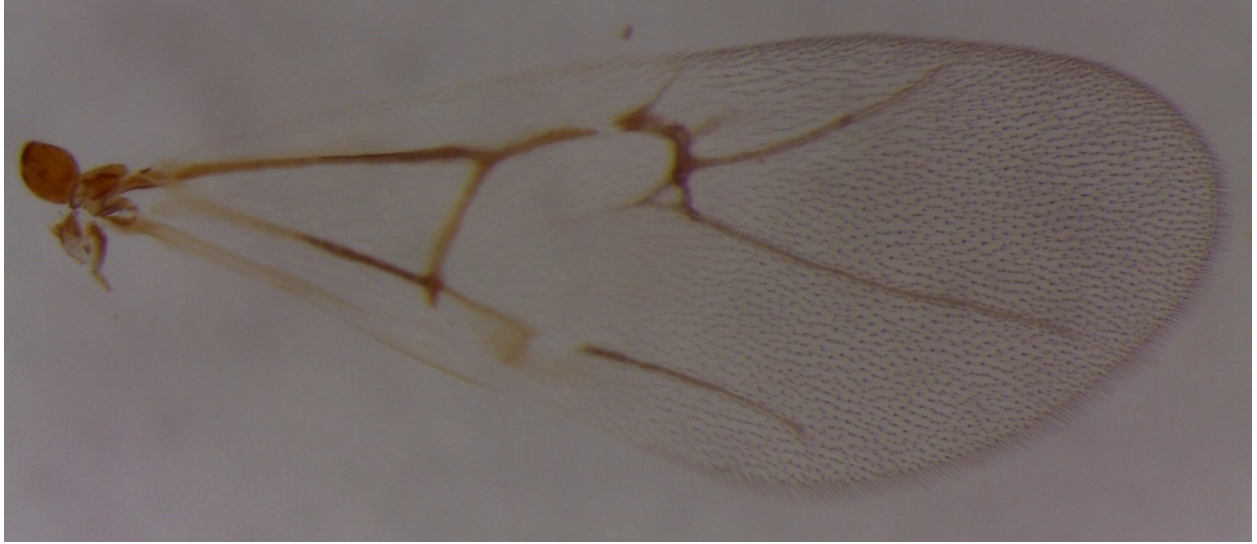


Callirhytis seminator - Wasp: 884-039-4

(No wing picture)



Callirhytis unknown leaf gall on *Quercus stellata* - Wasp: 1096-113-1



Callirhytis vaccinii - Wasp: 1580-155-9



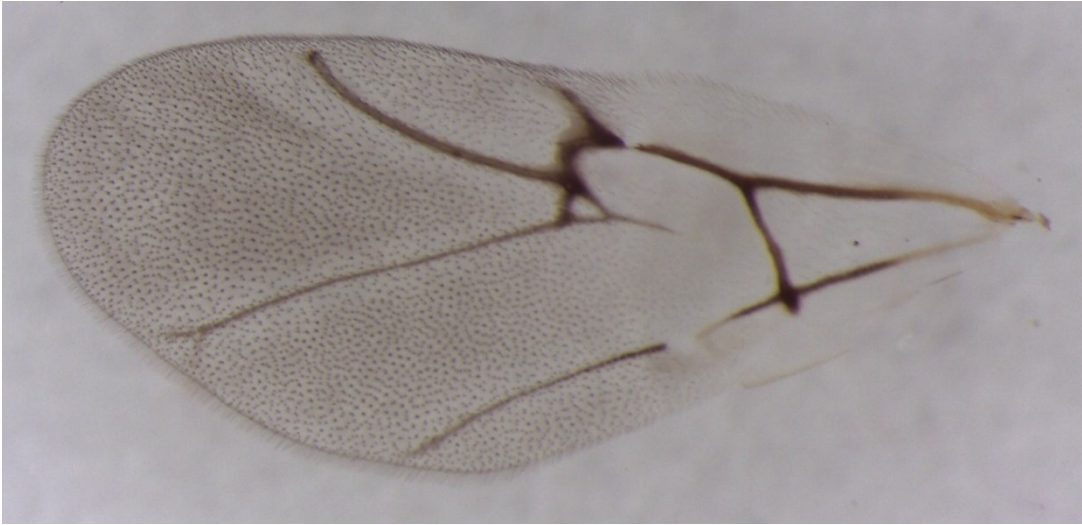
Cynips conspicuus - Wasp: 1489-125-2



Disholcaspis cinerosa - Wasp: 114-1-35A



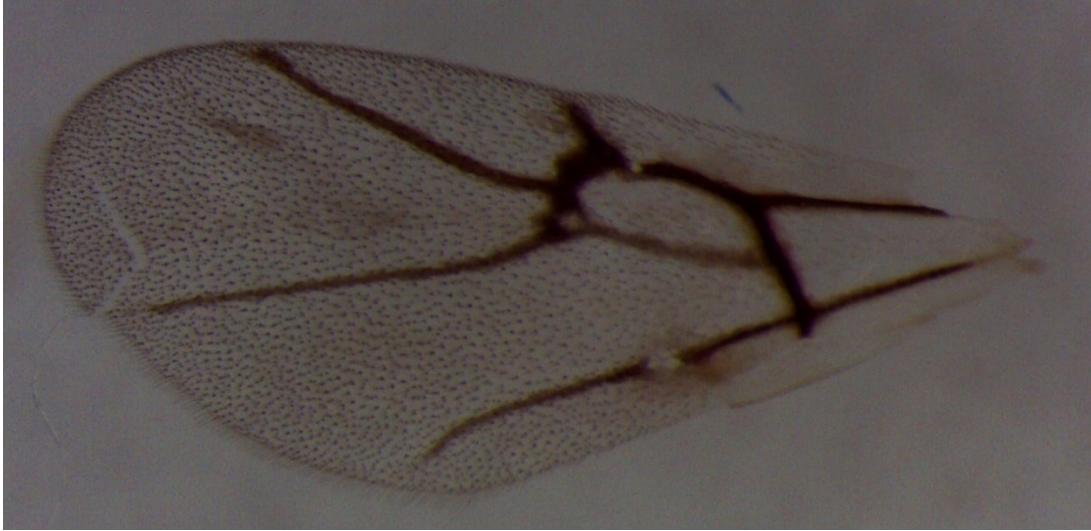
Disholcaspis edura - Wasp: 1685-216-1A



Disholcaspis quercusglobulus - Wasp: 1126-019-2



Disholcaspis quercusmamma (sexgen female) - Wasp: 1286-090-1A



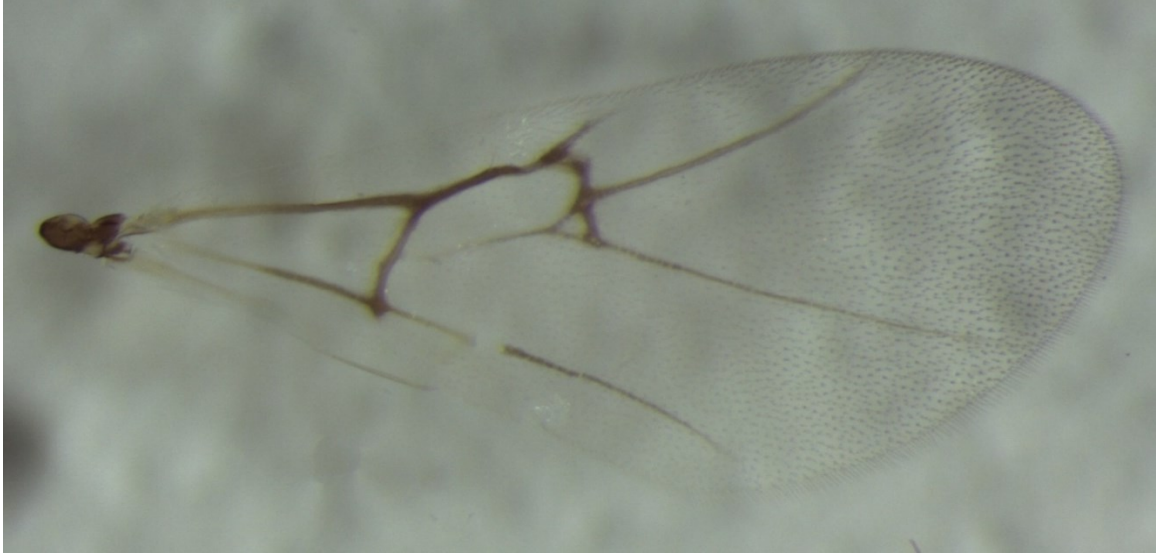
Disholcaspis quercusmamma (asex female) - Wasp: 644-020-001



Disholcaspis unknown conical stem gall - Wasp: 1679-211-1



Druon ignotum - Wasp: 114-1-35A



Druon quercusflocci - Wasp: 650-061-3



Dryocosmus minusculus - Wasp: 1497-141-9



Dryocosmus quercusnotha - Wasp: 720-038-001A



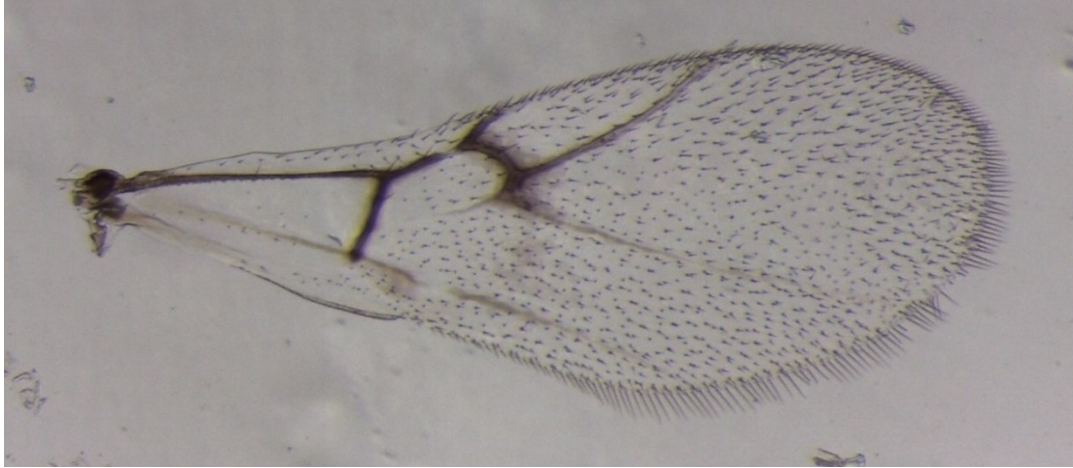
Dryocosmus quercuspalustris - Wasp: 720-038-001A



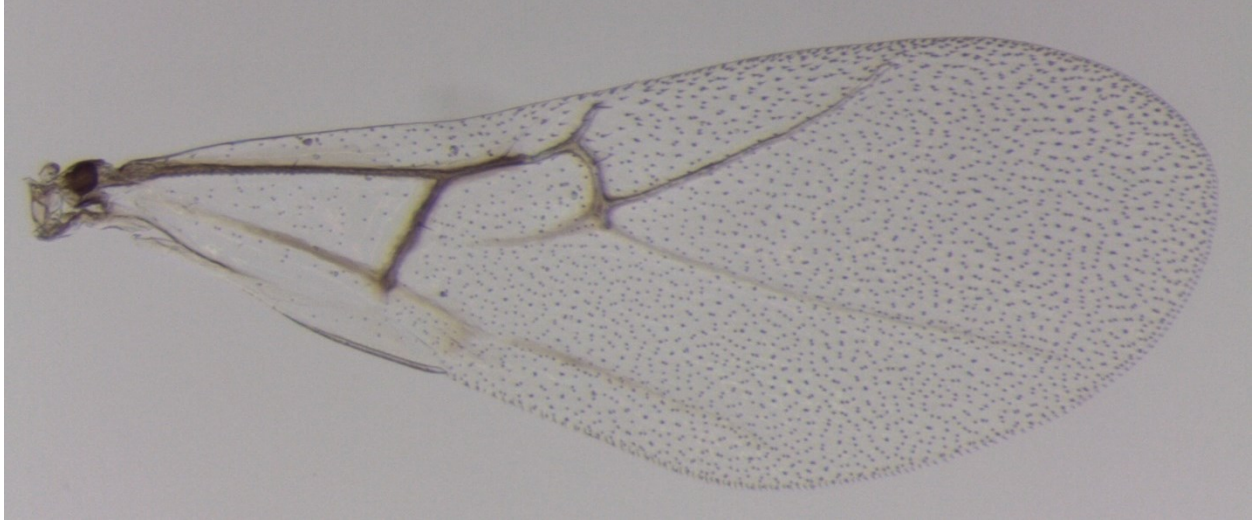
Kokkocynips imbricariae - Wasp: 1000-059-1



Loxaulus quercusmammula - Wasp: 866-035-017



Melikaiella ostensackeni - Wasp: 876-016-011A



Melikaiella tumifica - Wasp: 810-043-002



Neuroterus fragilis - Wasp: Nf_3



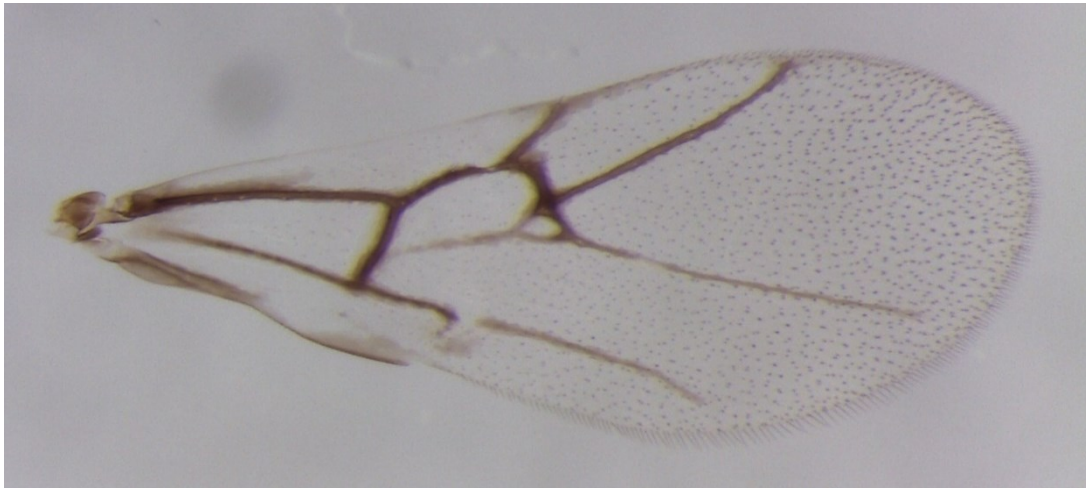
Neuroterus pallidus - Wasp: 1312-089-1



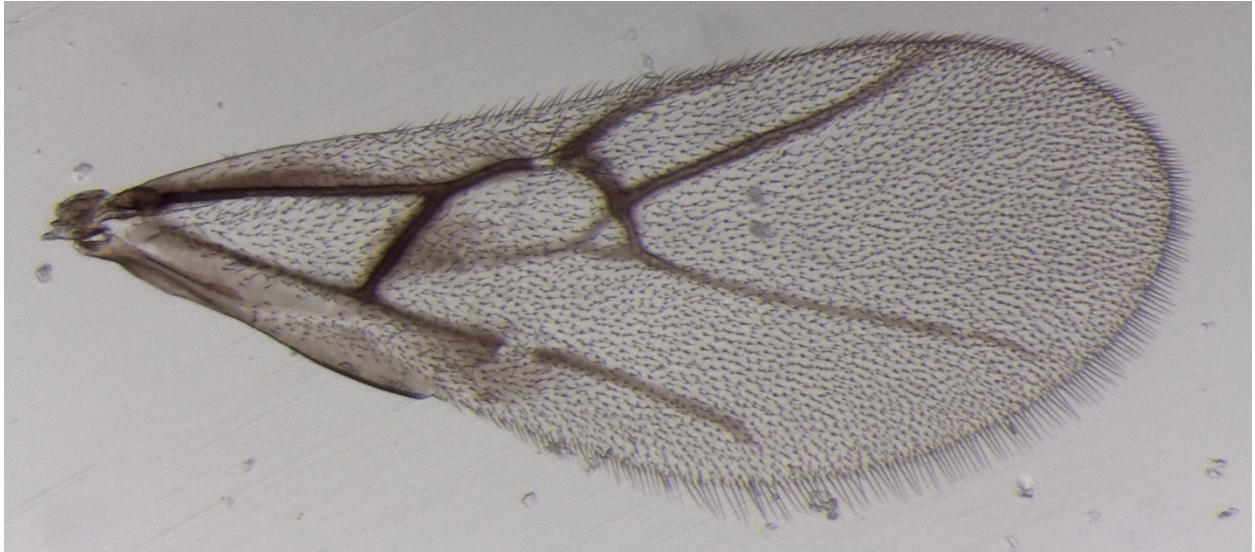
Neuroterus q_macrocarpa_flower_swelling_gall - Wasp: 742-088-3A



Neuroterus quercusbatatus - Wasp: 341-053-8



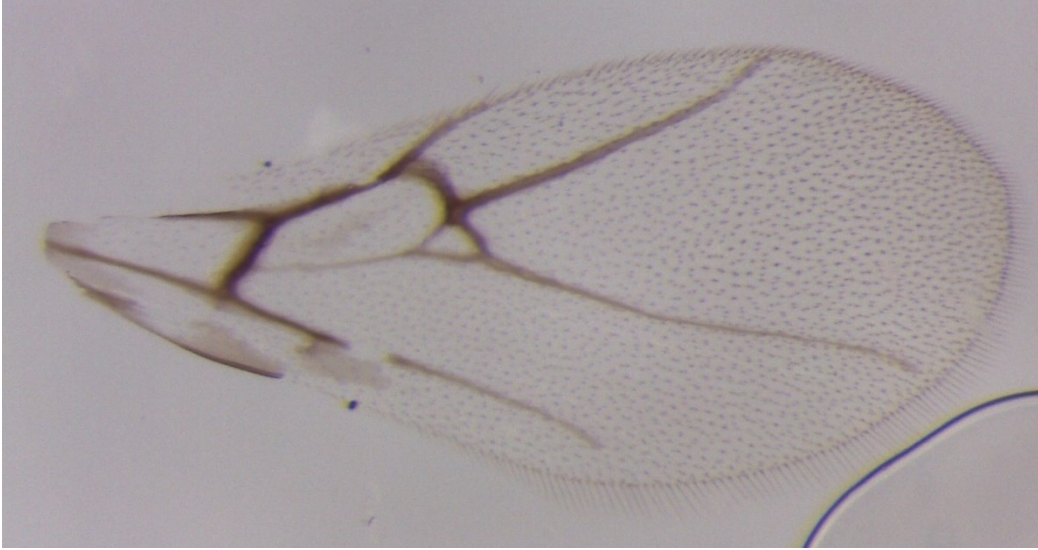
Neuroterus quercusirregularis - Wasp: 776-044-001A



Neuroterus quercusminutissimus - Wasp: LZ_972_2



Neuroterus quercusverrucarum - Wasp: 1210-022-16A



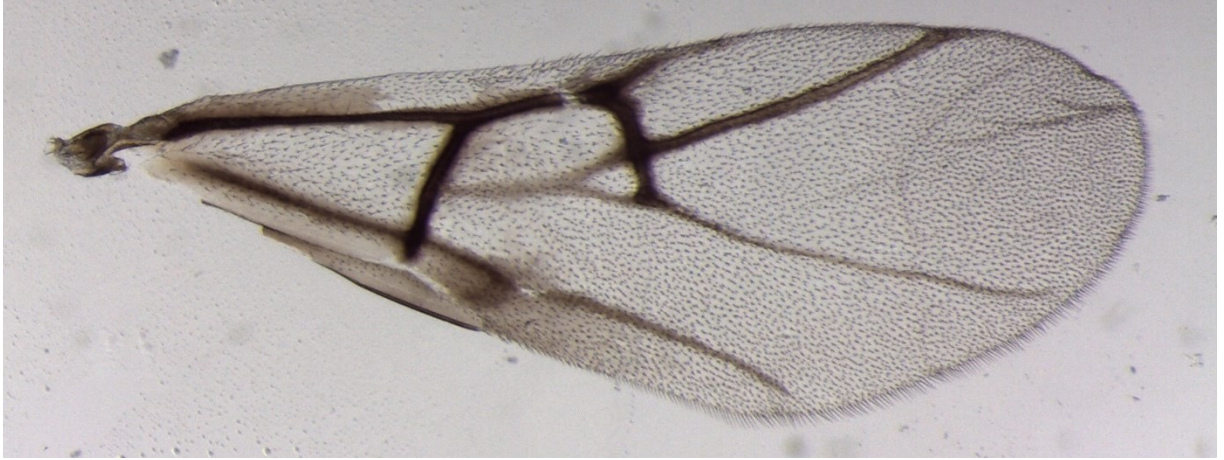
Neuroterus saltatorius - Wasp: Nsg1



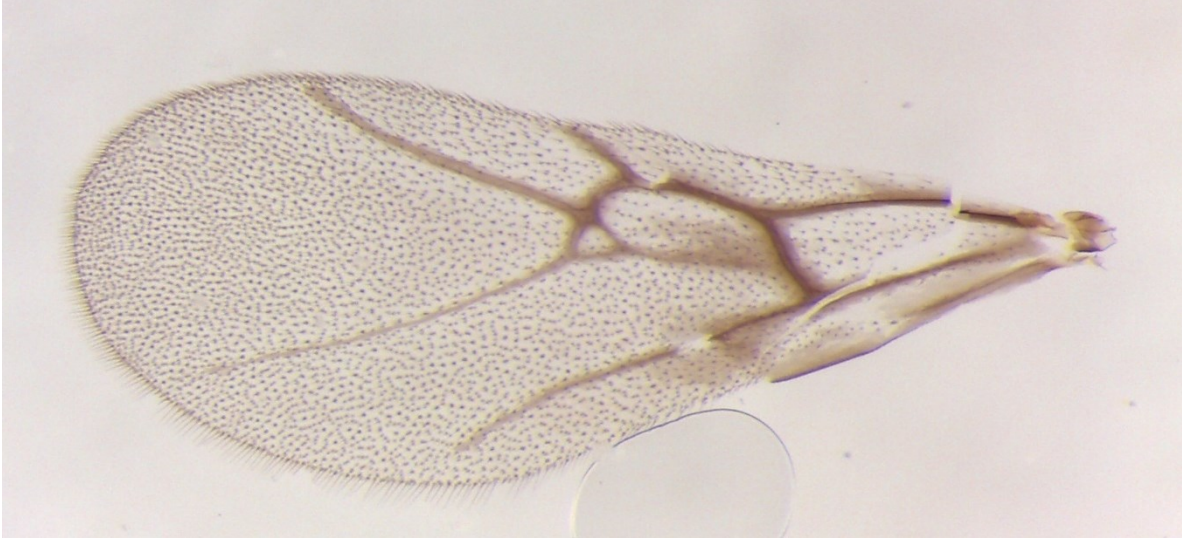
Neuroterus saltatorius texanus - Wasp: 1593-163-2



Neuroterus vesicula - Wasp: 694-033-001



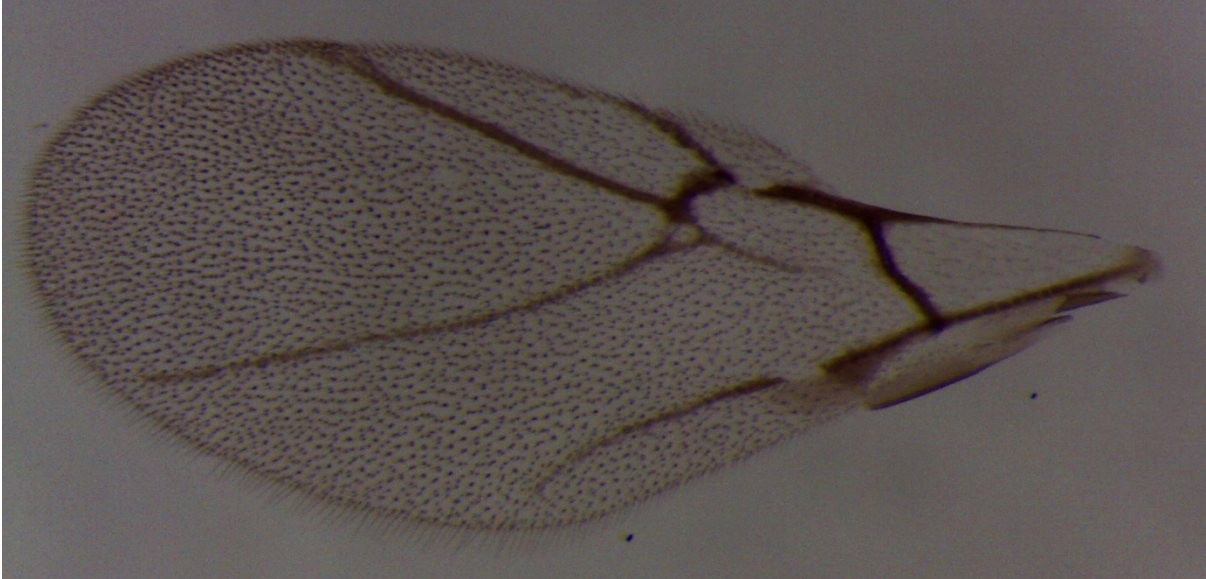
Neuroterus washingtonensis - Wasp: Nw_2



Philonix nigra – 630-023-7



Unknown bud gall on *Quercus alba* – 1355-095-2



Unknown integral gall on *Quercus imbricariae* – 1291-045-1



Unknown stem gall on *Quercus grisea* – 1686-217-2A



Xanthoteras eburneum – 1664-199-2A



Zopheroteras sphaerula – 668-062-2

