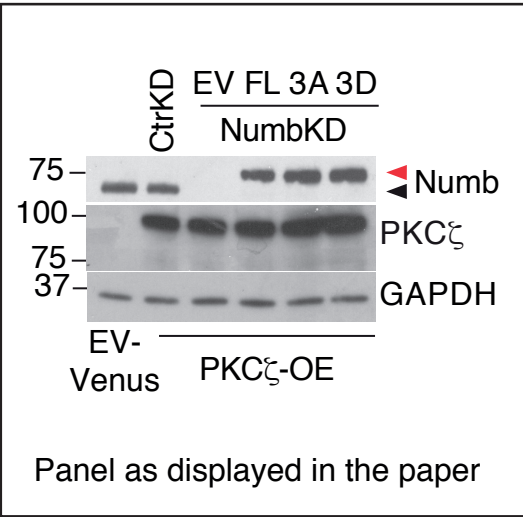


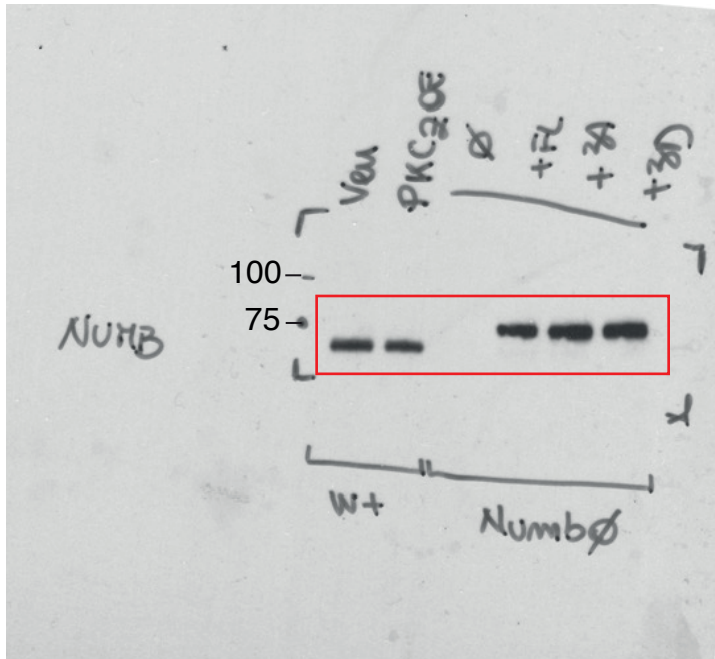
**Figure 4H (right)**



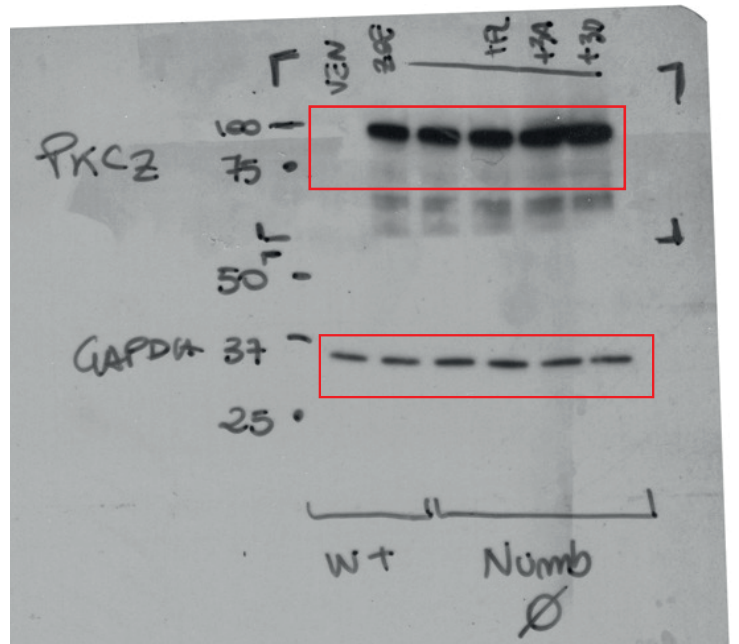
Lysates were run on 2 gels (gel 1, gel 2); IBs were as follows:

Gel 1: anti-Numb

Gel 2: anti-PKC $\zeta$  (upper part of the membrane);  
anti-GAPDH (lower part of the membrane)



Numb (Mouse) (Gel 1)



PKC $\zeta$  (Rabbit), upper box;  
GAPDH (Rabbit), lower box  
(Gel 2)