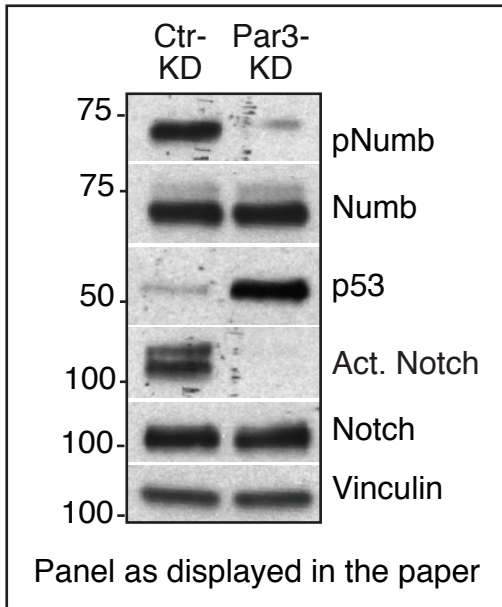


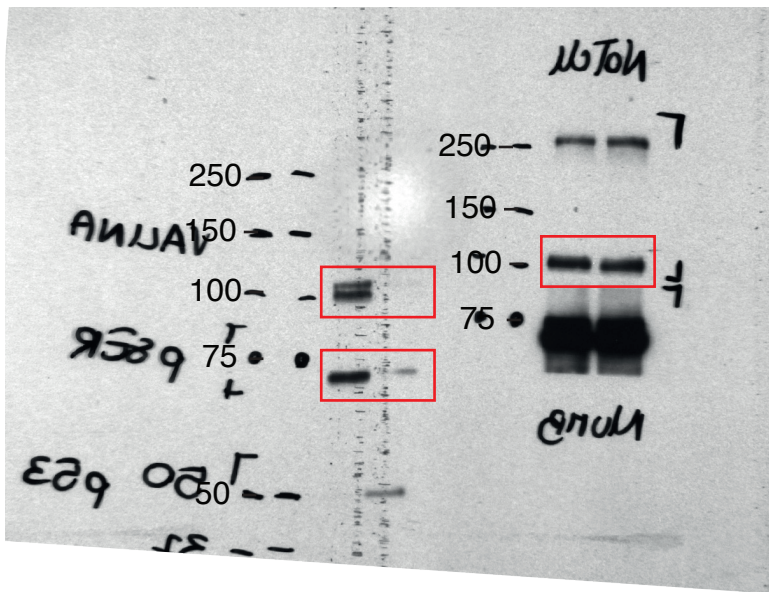
Figure 5A



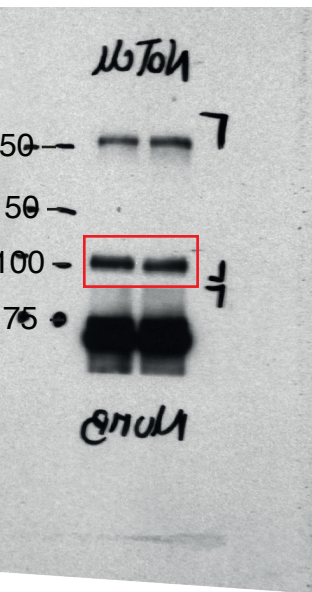
Lysates were run on 2 gels (gel 1, gel 2); IBs were as follows:

Gel 1: anti-Act. Notch (upper part of the membrane); anti-pNumb (middle part of the membrane); anti-p53 (lower part of the membrane)
 For gel 1, we display 2 different exposures, one used to show Act. Notch and pNumb, the other to show p53.

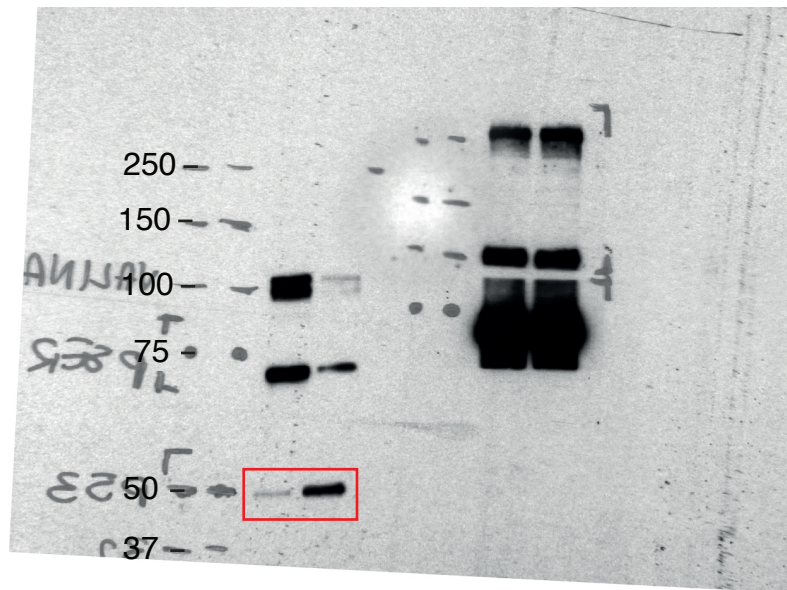
Gel 2: anti-Notch (upper part of the membrane), then re-blotted with anti Vinculin; anti-Numb (lower part of the membrane).



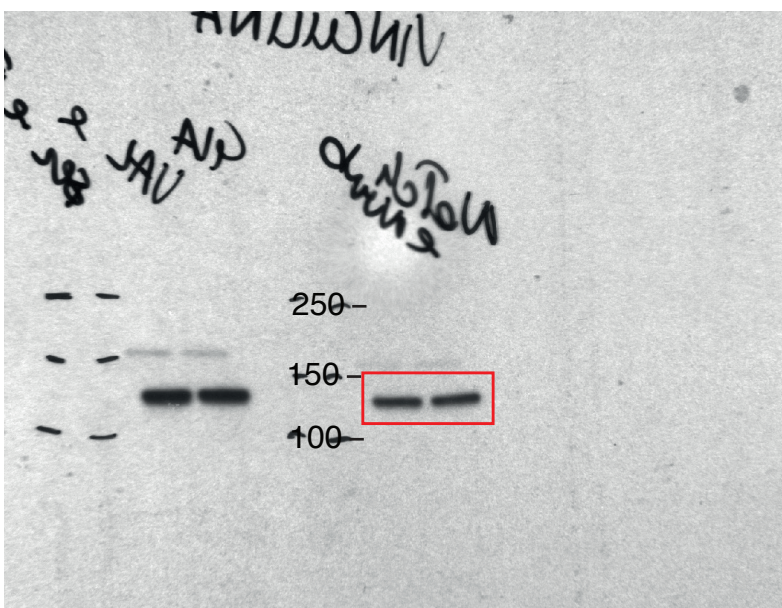
Act. Notch (Rabbit), upper box;
 pNumb (Rabbit), lower box;
 (Gel 1, short exposure)



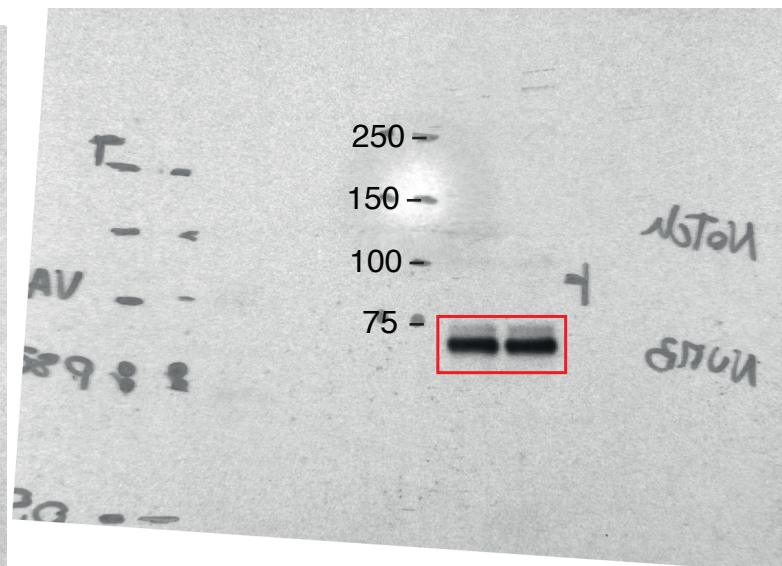
Notch (Rat);
 (Gel 2, upper part of membrane)



p53 (Mouse);
 (Gel 1, long exposure)

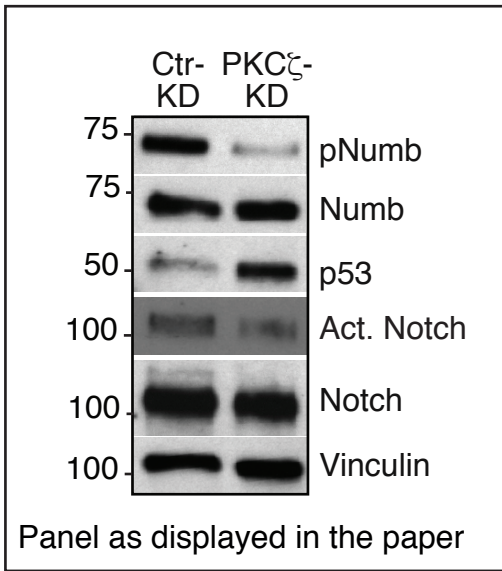


Vinculin (Mouse);
 (Re-blot Gel 2, upper part of membrane)



Numb (Mouse);
 (Gel 2, lower part of membrane)

Figure 5B

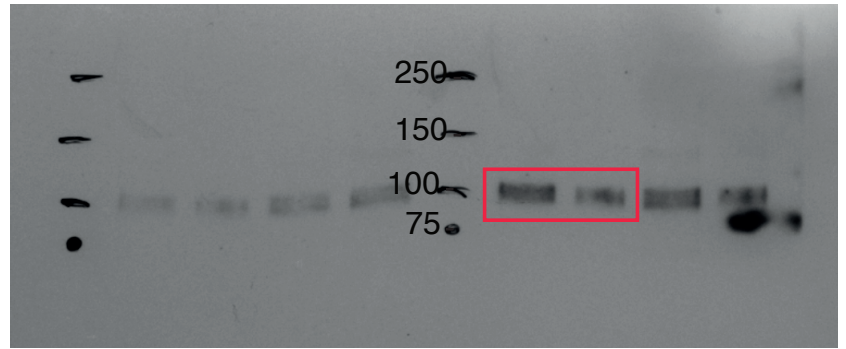


Lysates were run on 3 gels (gel 1, gel 2, gel 3); IBs were as follows:

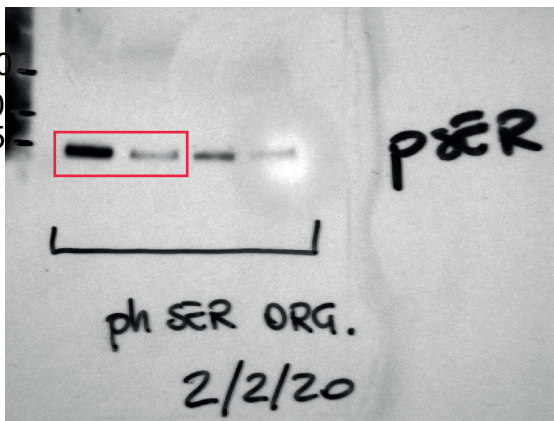
Gel 1: anti-pNumb, then stripped and re-blotted with anti-Vinculin.

Gel 2: anti-Numb

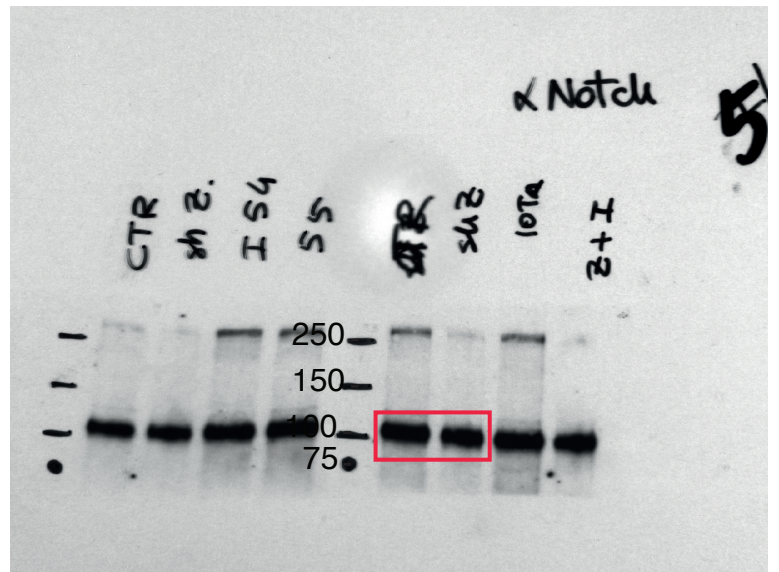
Gel 3: Upper part of membrane: anti-Act. Notch, then stripped and re-blotted with anti-Notch. Lower part of membrane, anti-p53.



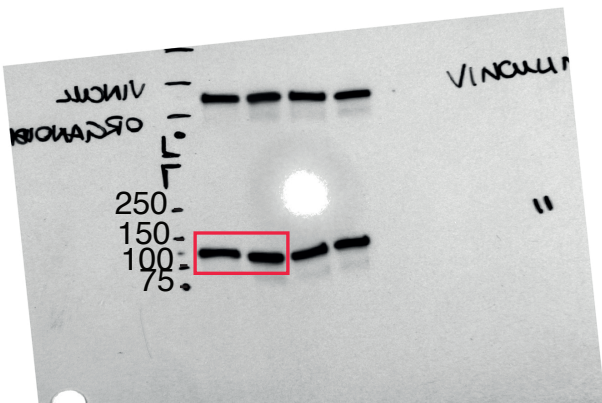
Act. Notch (Rabbit) (Gel 3, upper part of membrane)



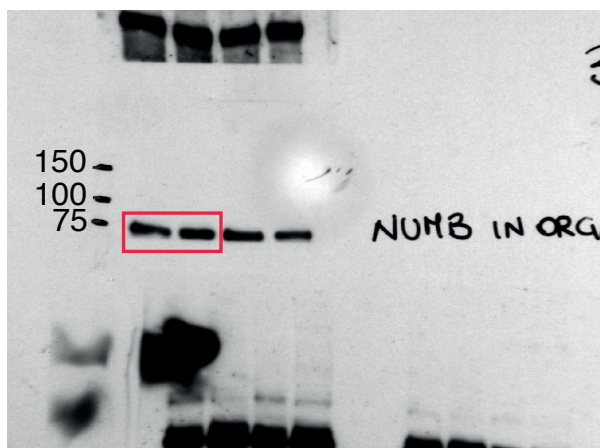
pNumb (Rabbit) (Gel 1)



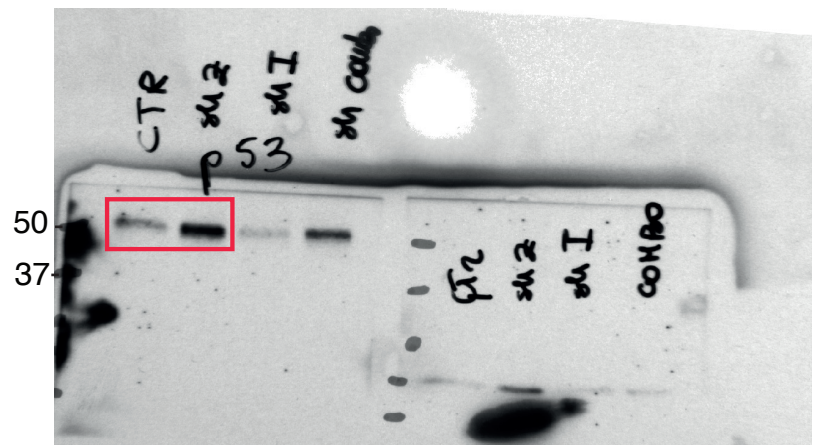
Notch (Rat) (Re-blot Gel 3, upper part of membrane)



Vinculin (Mouse) (Re-blot Gel 1)

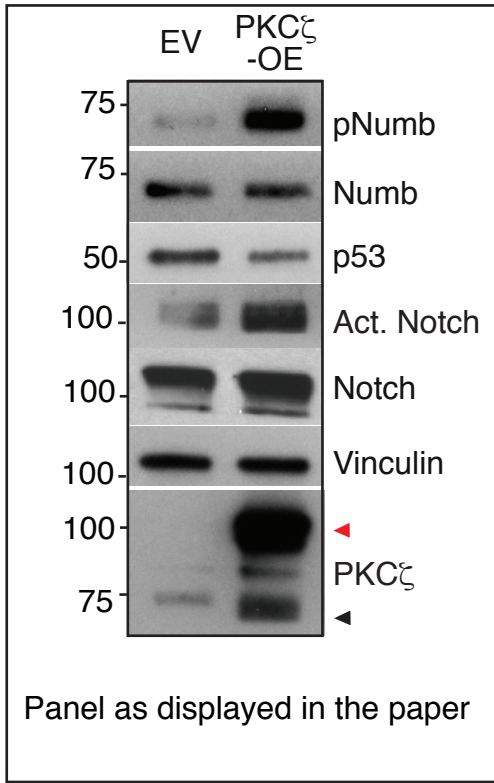


Numb (Mouse) (Gel 2)



p53 (Mouse) (Re-blot Gel 3, lower part of membrane)

Figure 5C



Lysates were run on 2 gels (gel 1, gel 2); IBs were as follows:
 Gel 1:
 Upper part of membrane: anti-PKC ζ
 Lower part of membrane anti-p53.
 Upper part of membrane was stripped, further cut and reblotted:
 - top: anti-Notch and then anti-Vinculin
 - bottom: anti-pNumb
 Gel 2: anti-Act. Notch (upper part of membrane); anti-Numb (lower part of membrane)

