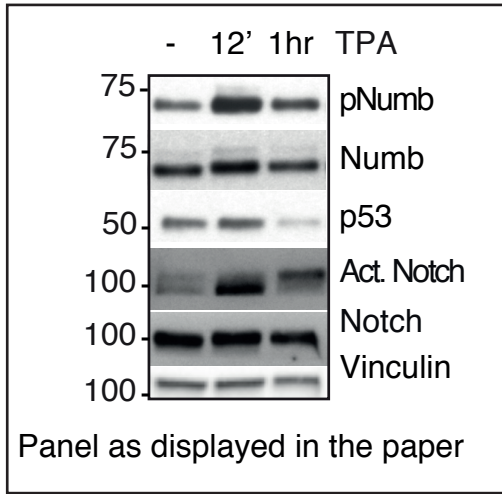
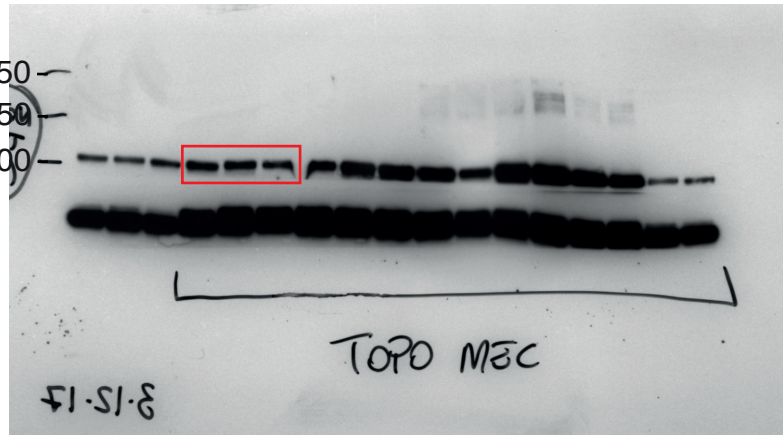


Figure 9D (right)

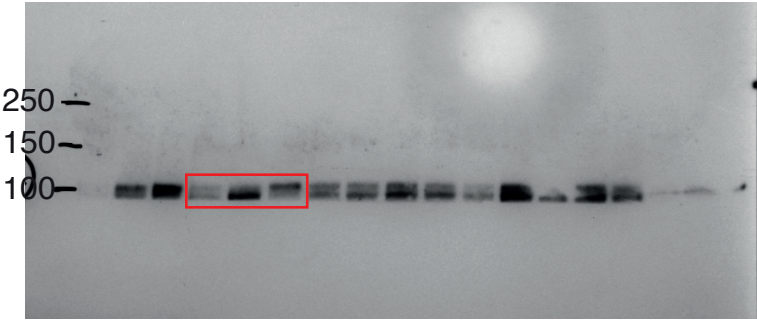


Lysates were run on 2 gels (gel 1, gel 2); IBs were as follows:

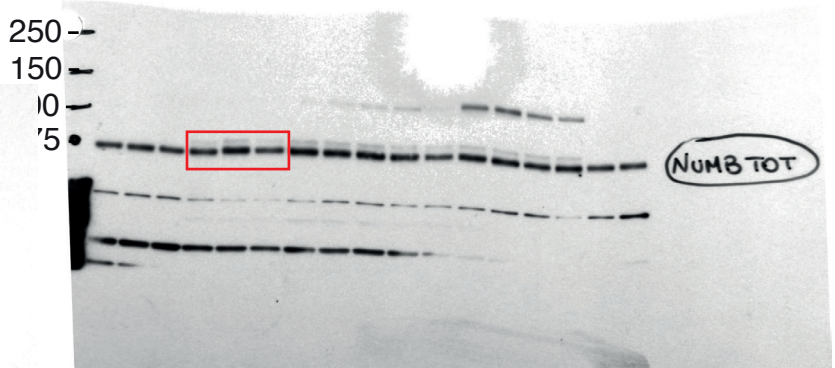
Gel 1: anti-Act. Notch (upper part of the membrane); anti-pNumb (middle part of the membrane), anti-p53 (lower part of the membrane)
 Gel 2: anti-Notch (upper part of the membrane), anti-Numb (lower part of the membrane); anti-Vinculin (re-blot upper part of the membrane)



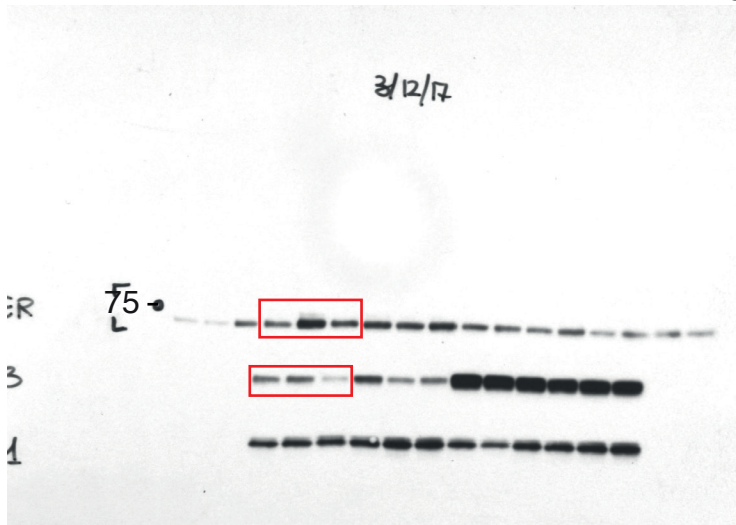
Notch (Rat)
(Gel 2)



Act. Notch (Rabbit)
(Gel 1)



Numb (Mouse)
(Gel 2)

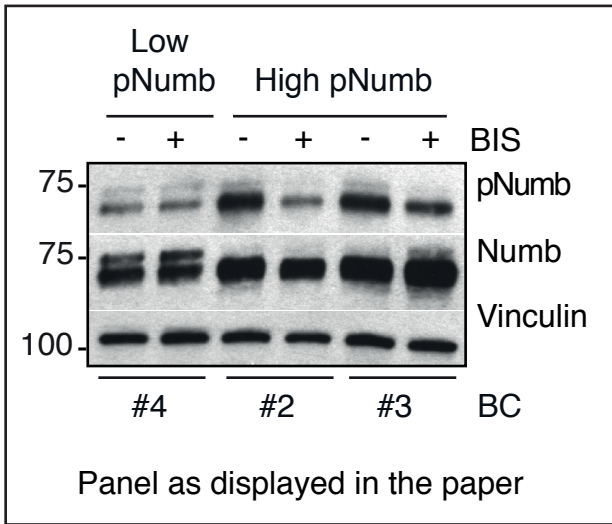


pNumb (Rabbit) (top box)
 p53 (Mouse) (bottom box)
 (Gel 1)



Vinculin (Mouse)
 (Re-blot, Gel 2)
 (This signal was acquired with chemidoc)

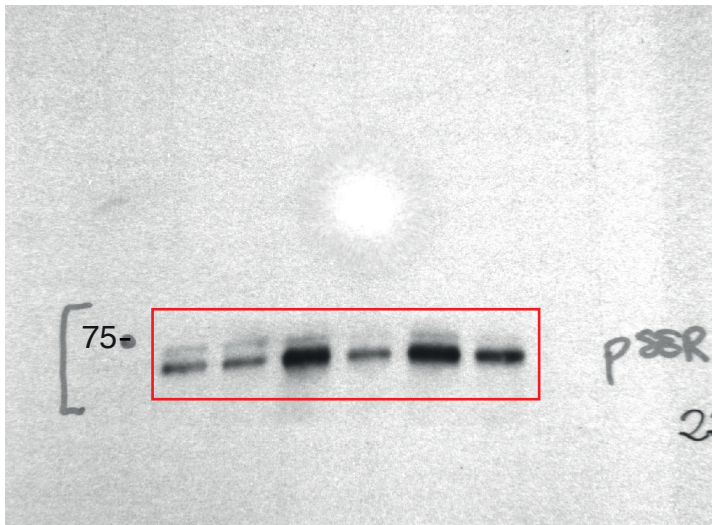
Figure 9F



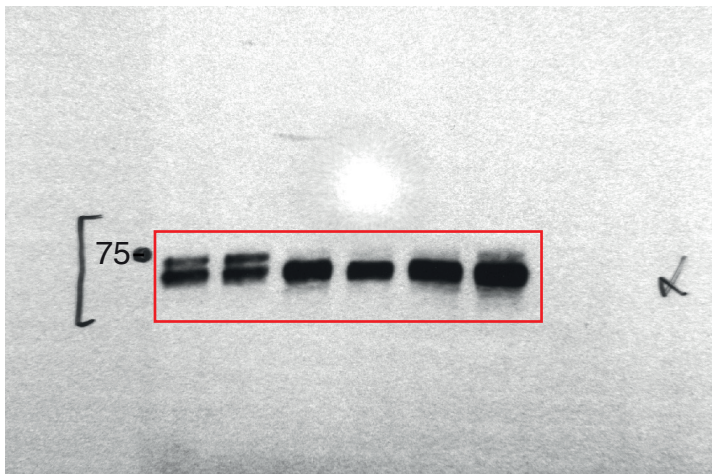
Lysates were run on a single gel; IBs were as follows:

Lower part of membrane: IB with anti-pNumb then stripping and re-blotting with anti-Numb

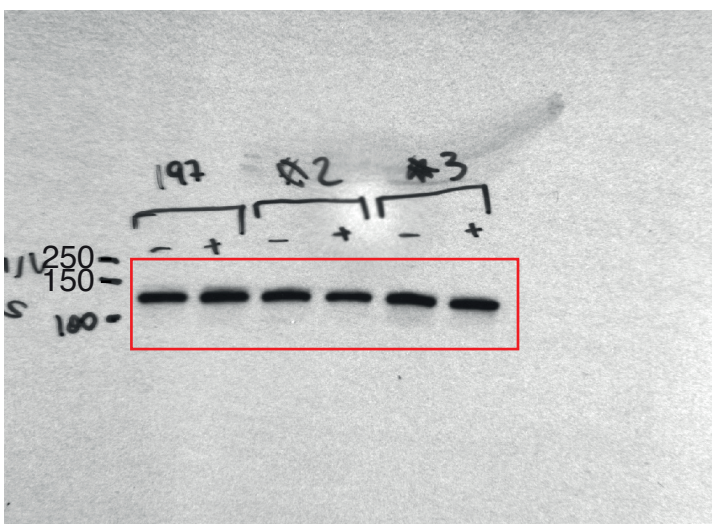
Upper part of membrane: IB with anti-Vinculin.



pNumb (Rabbit)



Numb (Mouse, Re-blotting)



Vinculin (Mouse)