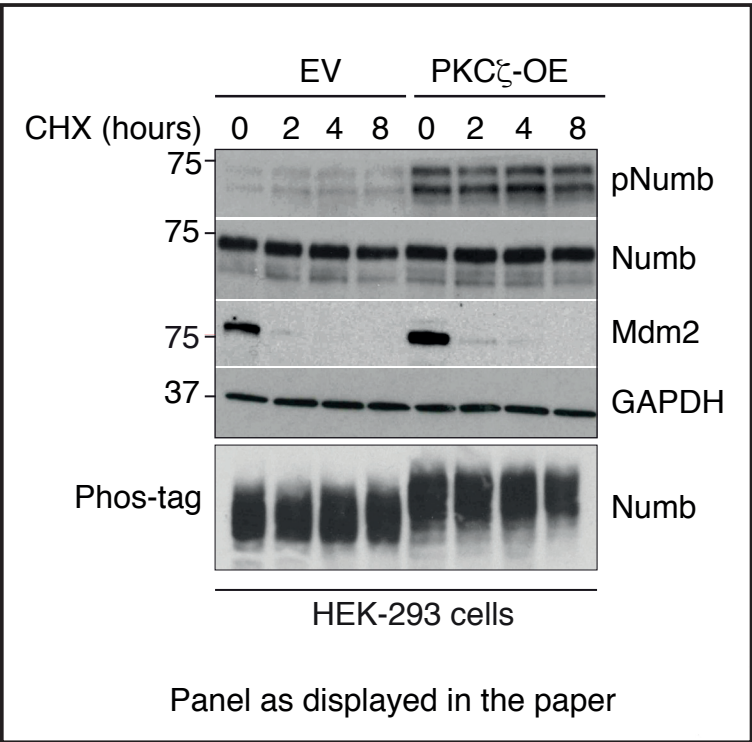


Supplementary Figure 3B

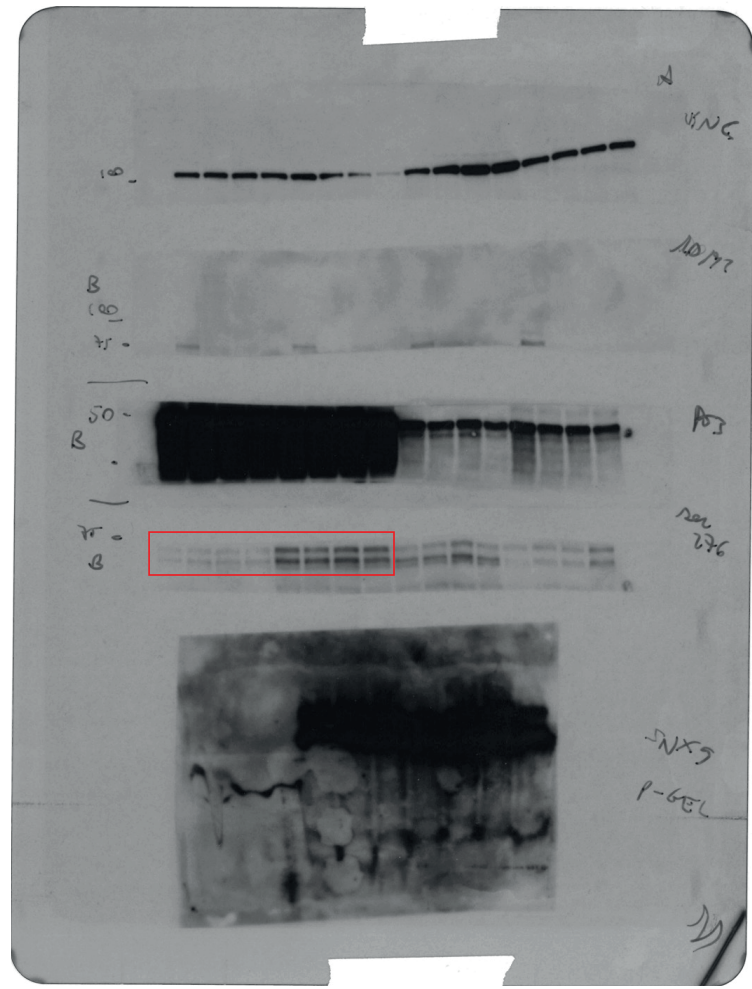


Lysates were run on 3 gels (gel 1, gel 2, gel 3).
IBs were as follows:

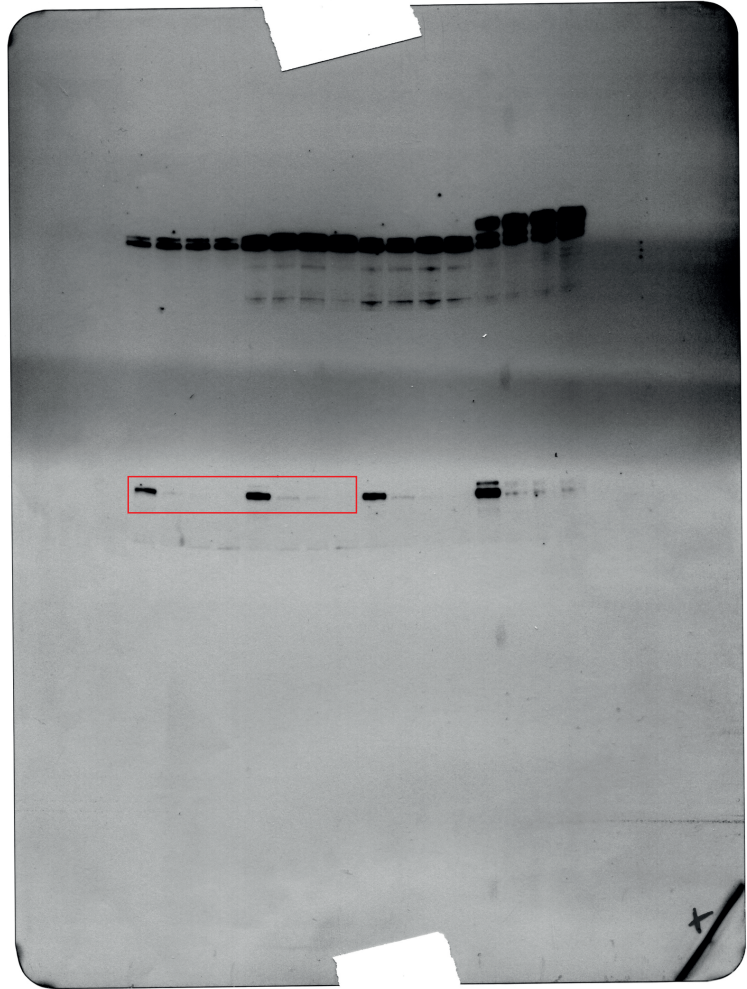
Gel 1: SDS PAGE. IB anti-Mdm2 (upper part of the membrane), anti-pNumb (lower part of the membrane).

Gel 2: SDS PAGE. IB anti-Numb (upper part of the membrane), anti-GAPDH (lower part of the membrane)

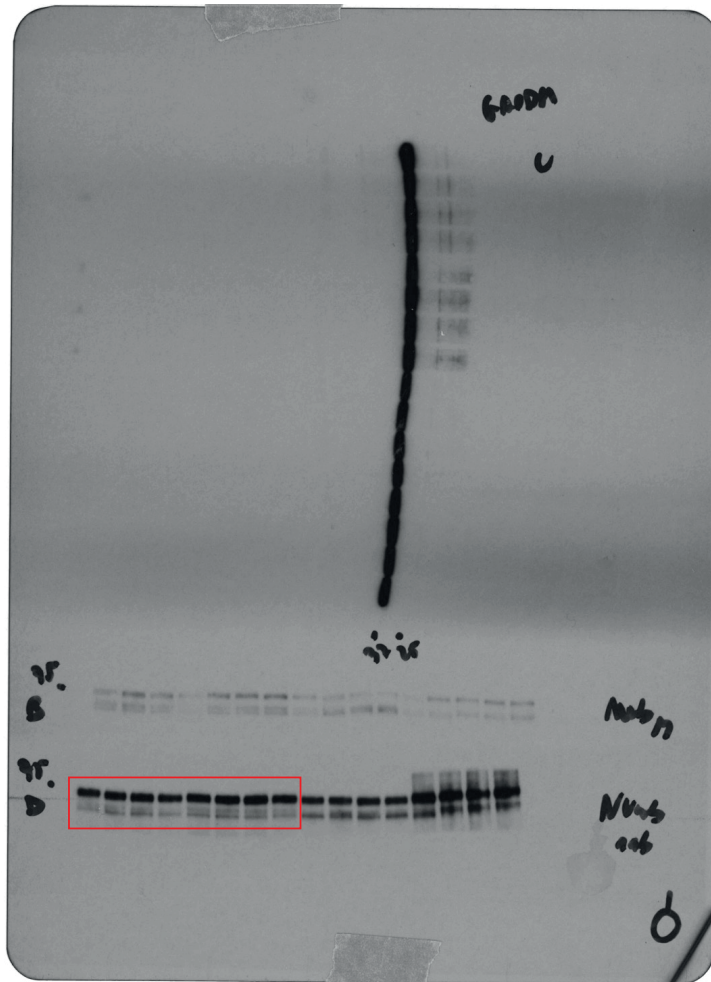
Gel 3: Phos-Tag gel (8%): IB with anti-Numb.



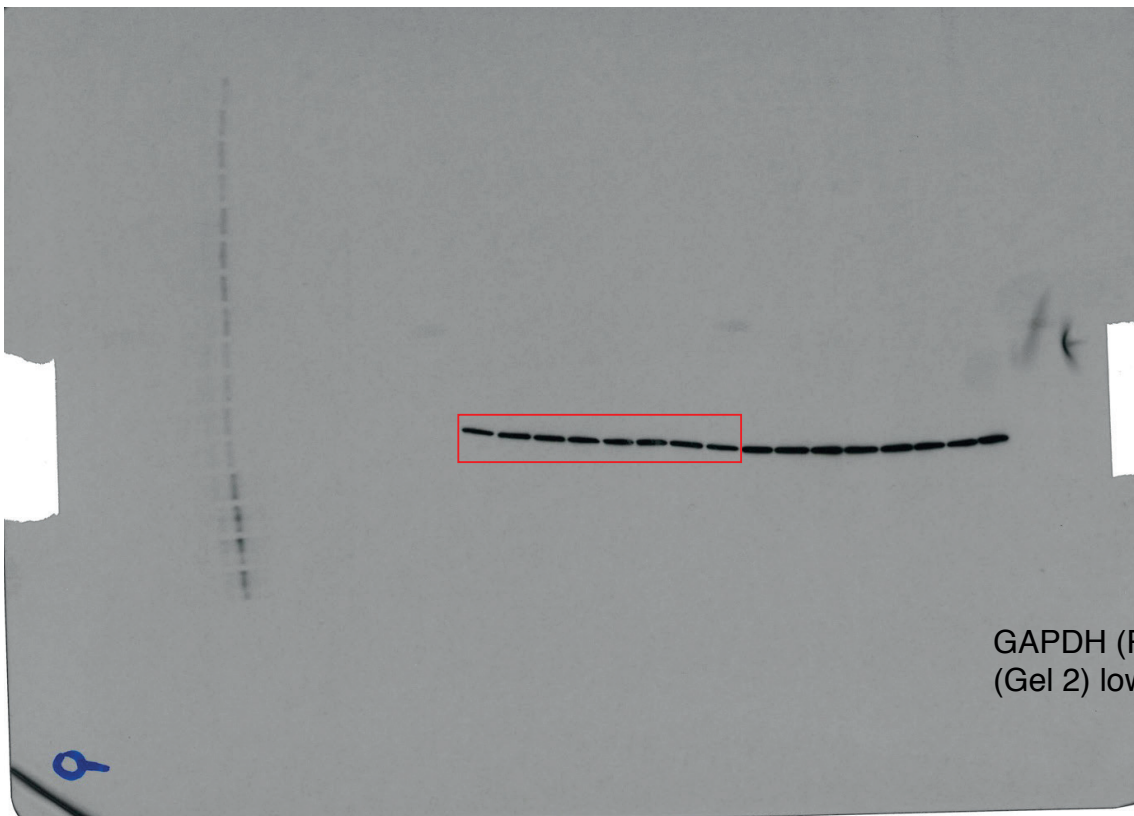
pNumb (Rabbit)
(Gel 1) lower part membrane



Mdm2 (Mouse)
(Gel 1) upper part of membrane

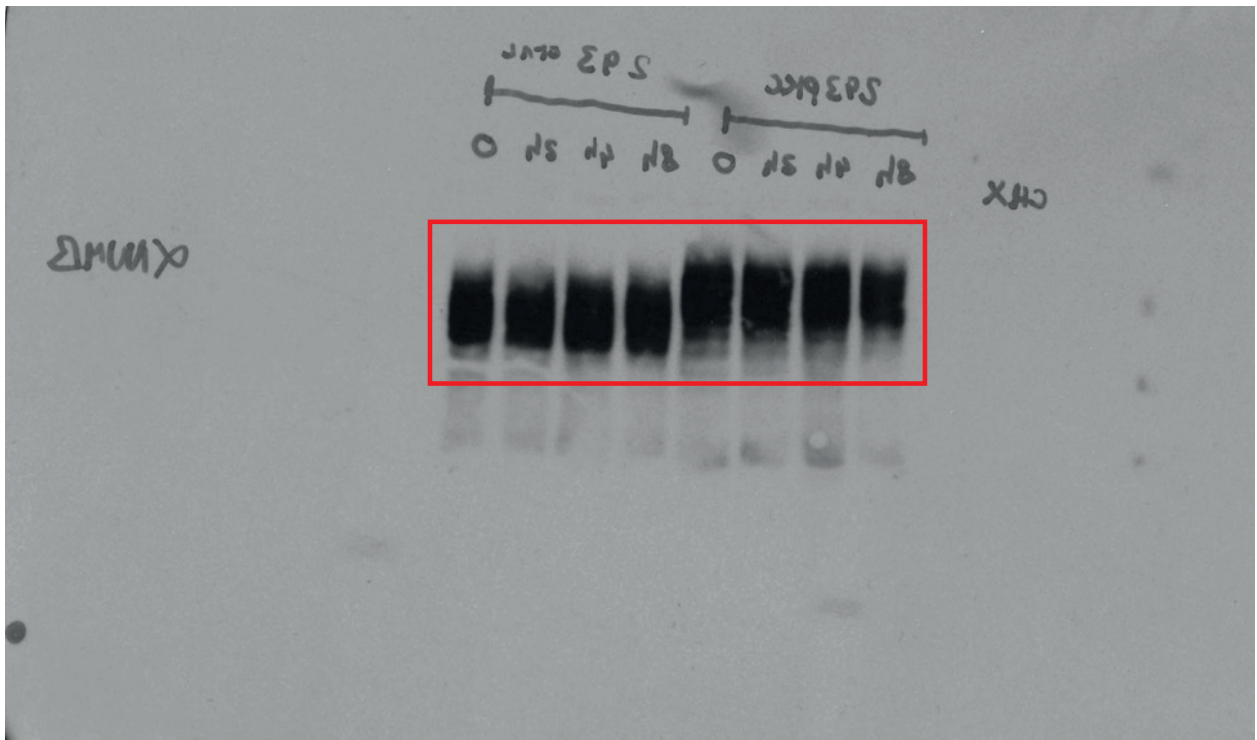


Numb (Rabbit)
 (Gel 2) upper part of membrane



GAPDH (Rabbit)
 (Gel 2) lower part of membrane

Phos-tag



Numb (Mouse)
(Gel 3)