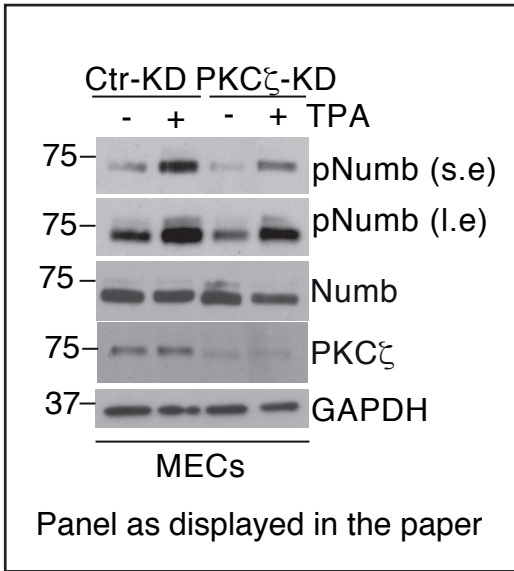
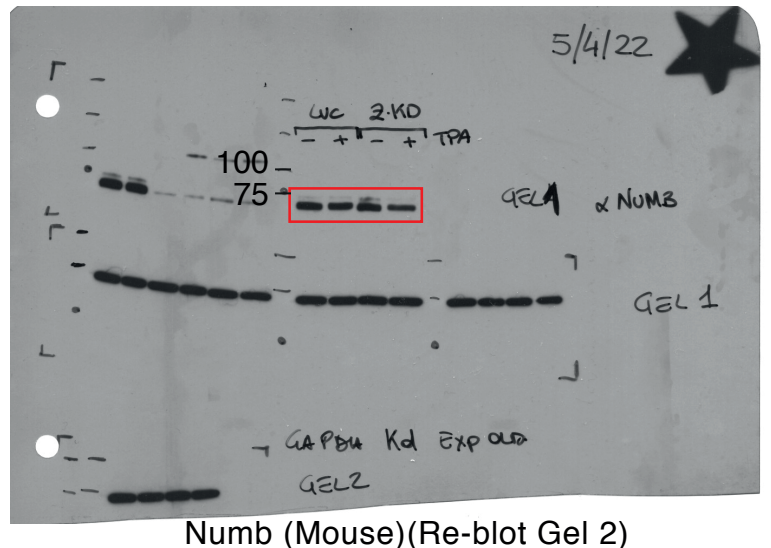
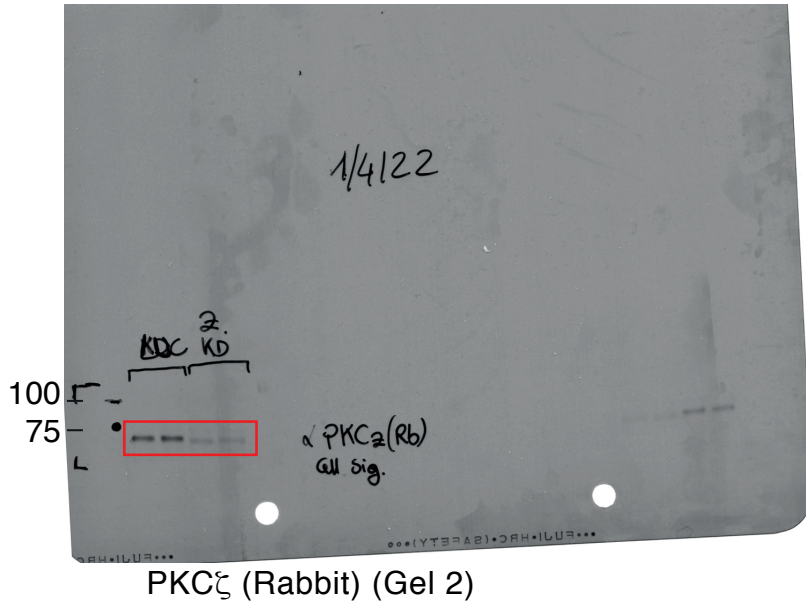
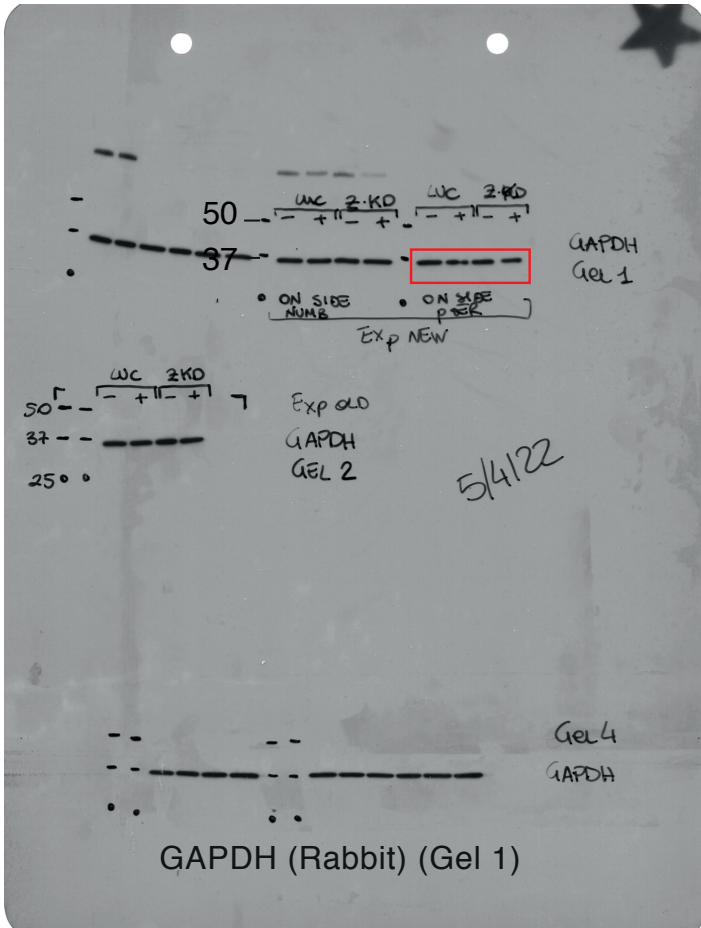
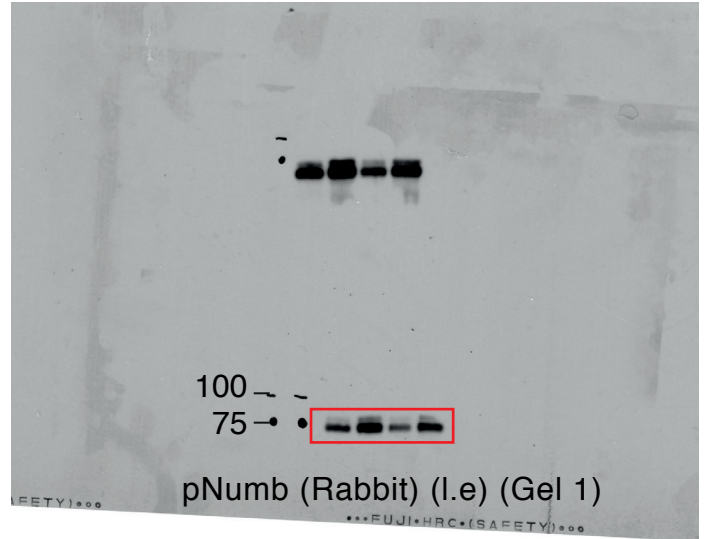
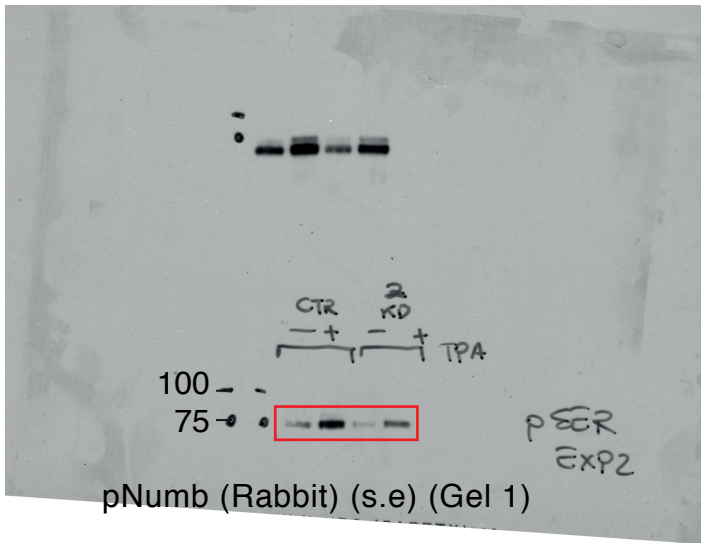


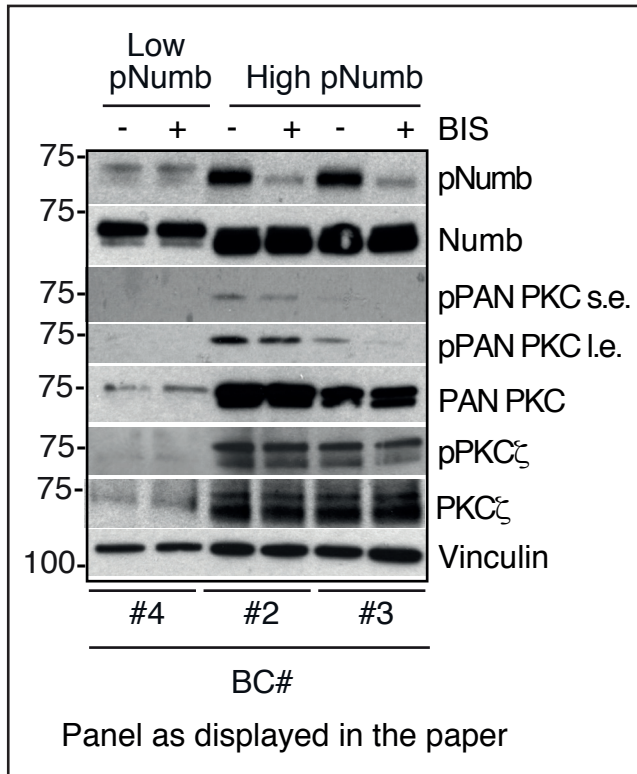
Supplementary Figure 5C



Lysates were run on 2 gels (gel 1, gel 2); IBs were as follows:
 Gel 1: anti-pNumb (upper part of the membrane) two exposures are shown (s.e, short exp; l.e, long exp.). Anti GAPDH (lower part of the membrane).
 Gel 2: anti-PKC ζ , then stripped and re-blotted with anti-Numb.



Supplementary Figure 5F



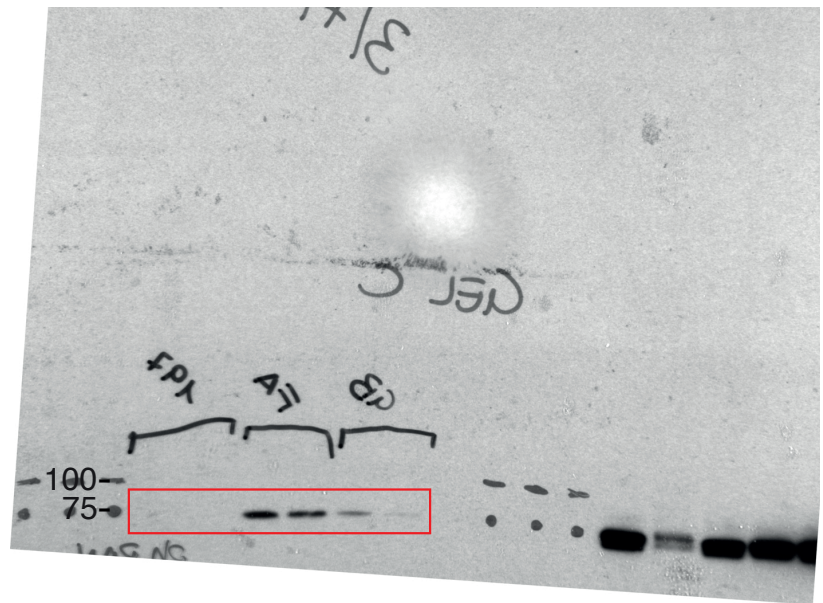
Lysates were run on 4 gels (gel 1, gel 2, gel 3, gel 4); IBs were as follows:

Gel 1: anti-pPAN PKC (two exposures shown; s.e, short exp., l.e, long exp); then stripped and re-blotted with anti pNumb; then re-blotted with anti Vinculin

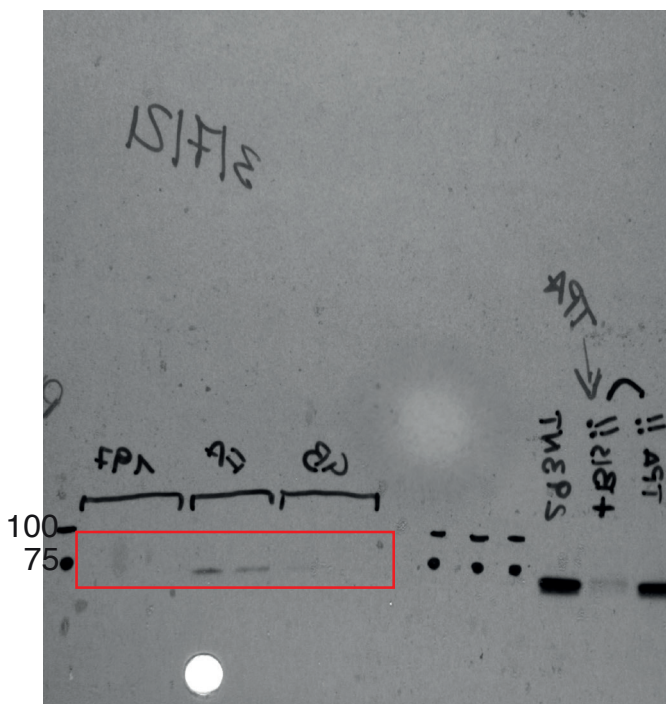
Gel 2: anti-PAN PKC, then stripped and re-blotted with anti Numb

Gel 3: anti-pPKC ζ

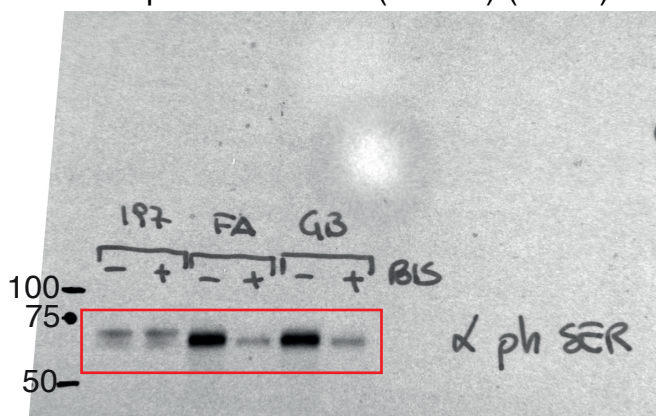
Gel 4: anti-PKC ζ



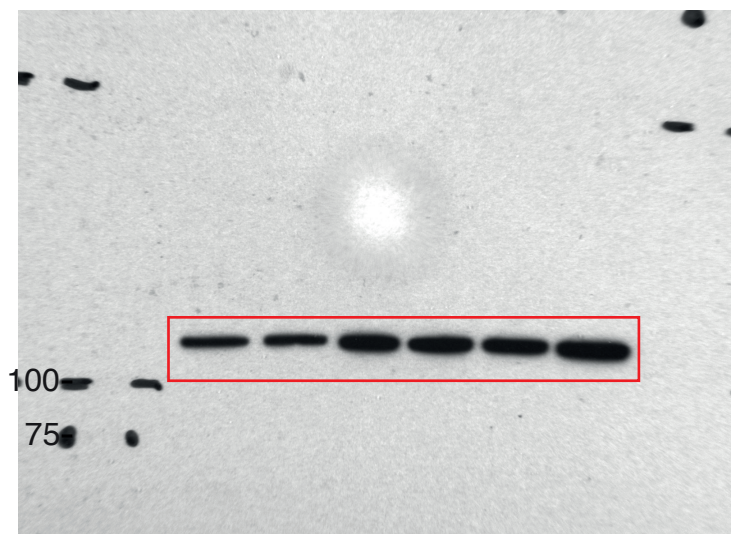
pPAN PKC I.e (Rabbit) (Gel 1)



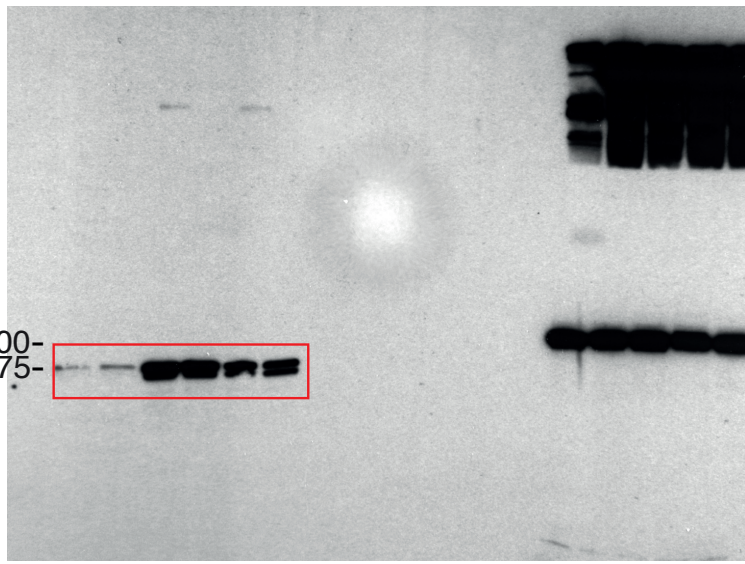
pPAN PKC s.e (Rabbit) (Gel 1)



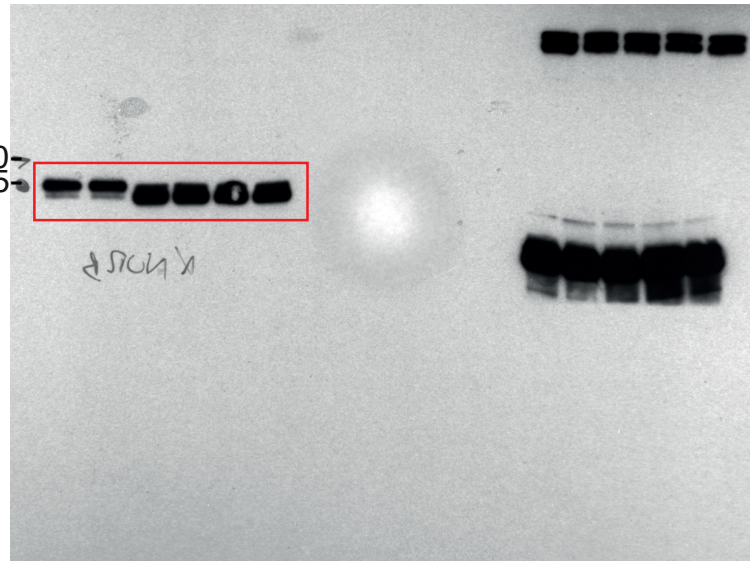
pNumb (Rabbit) (Re-blot, Gel 1)



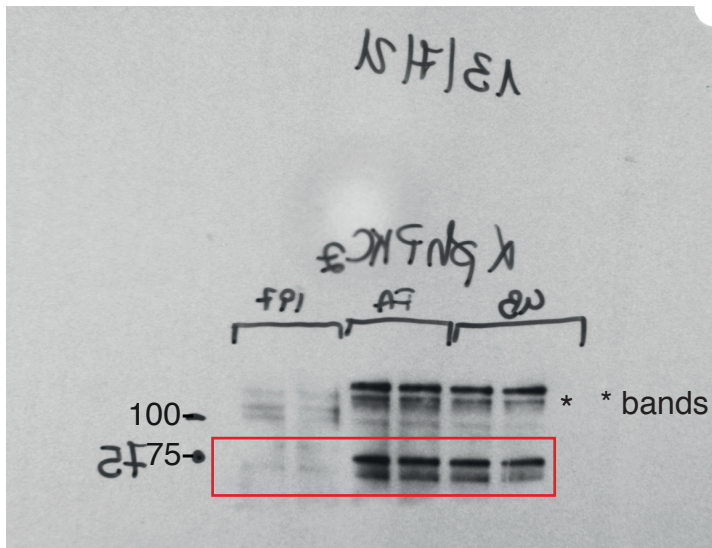
Vinculin (Mouse) (Gel 1, Re-blot)



PAN-PKC (Mouse) (Gel 2)

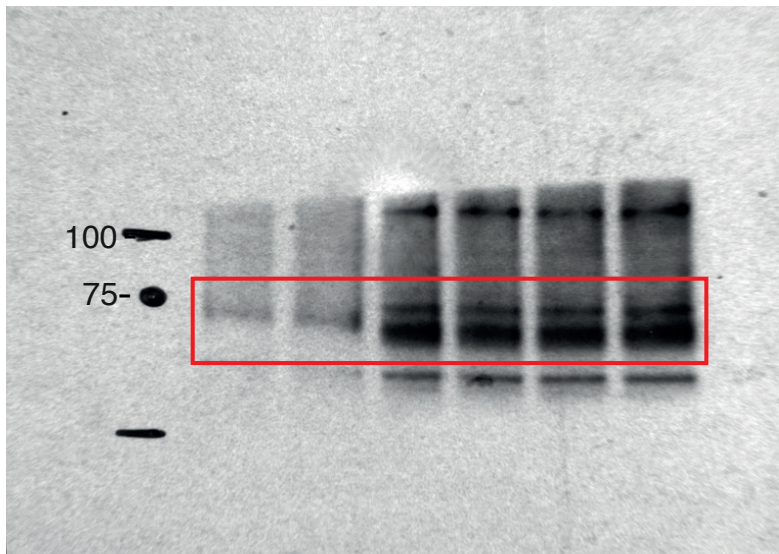


Numb (Mouse) (Re-blot Gel 2)



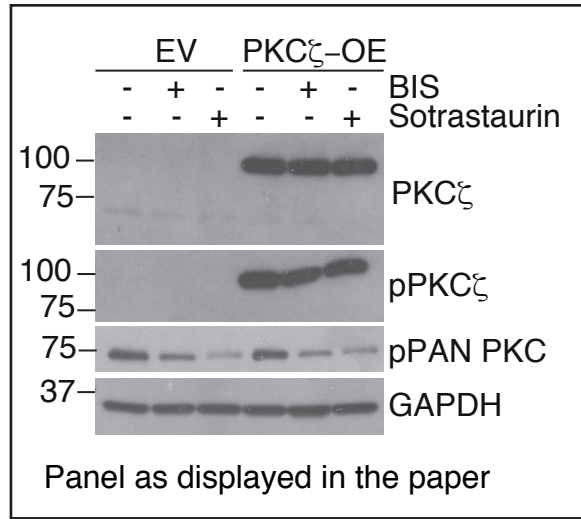
pPKC ξ (Mouse)
(Gel 3)

* * bands of unknown origin



PKC ξ (Rabbit)
(Gel 4)

Supplementary Figure 5G



Lysates were run on 3 gels (gel 1, gel 2, gel 3); IBs were as follows:

Gel 1: anti-PKC ζ (upper part of the membrane); anti GAPDH (lower part of the membrane)

Gel 2: anti-pPKC ζ

Gel 3: anti-pPAN PKC

