

Fig 6A

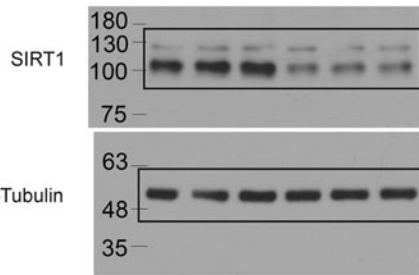


Fig 6B

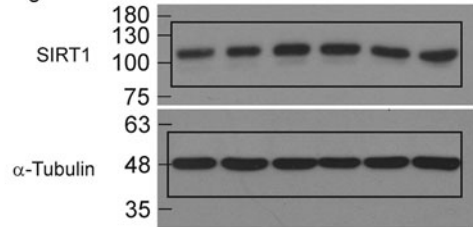


Fig 6C

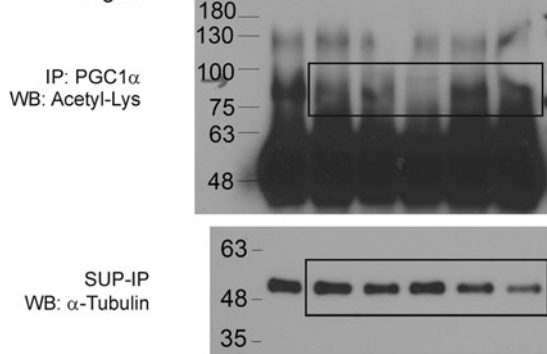
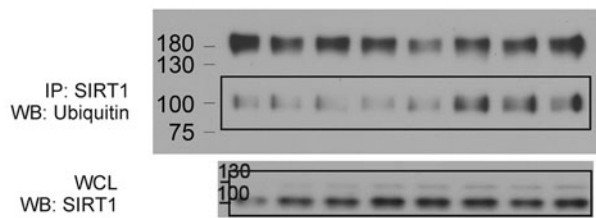


Fig 6D



SUPPLEMENTARY FIG. S8. Original full WBs corresponding to data shown in Figure 6. (Fig 6A) Full WBs corresponding to SIRT1 protein levels in hepatocytes treated with conditioned medium from RAW 264.7 cells treated with vehicle or APAP and α -Tubulin used as loading control. **(Fig. 6B)** Full WBs corresponding to SIRT1 protein levels in hepatocytes treated with APAP (0.5 and 1 mM) for 16 h and α -Tubulin used as loading control. **(Fig. 6C)** Full WBs corresponding to acetylated PGC1 α in hepatocytes treated with conditioned medium from RAW 264.7 cells treated with vehicle or APAP. Full WBs corresponding to α -Tubulin levels used as loading control. **(Fig. 6D)** Full WBs corresponding to SIRT1 ubiquitination levels from hepatocytes treated with conditioned medium from RAW 264.7 cells treated with vehicle or APAP. Full WBs corresponding to SIRT1 protein levels in the WCL used as loading control. PGC1 α , peroxisome proliferator-activated receptor (PPAR) gamma coactivator 1 alpha; WCL, whole-cell lysate.