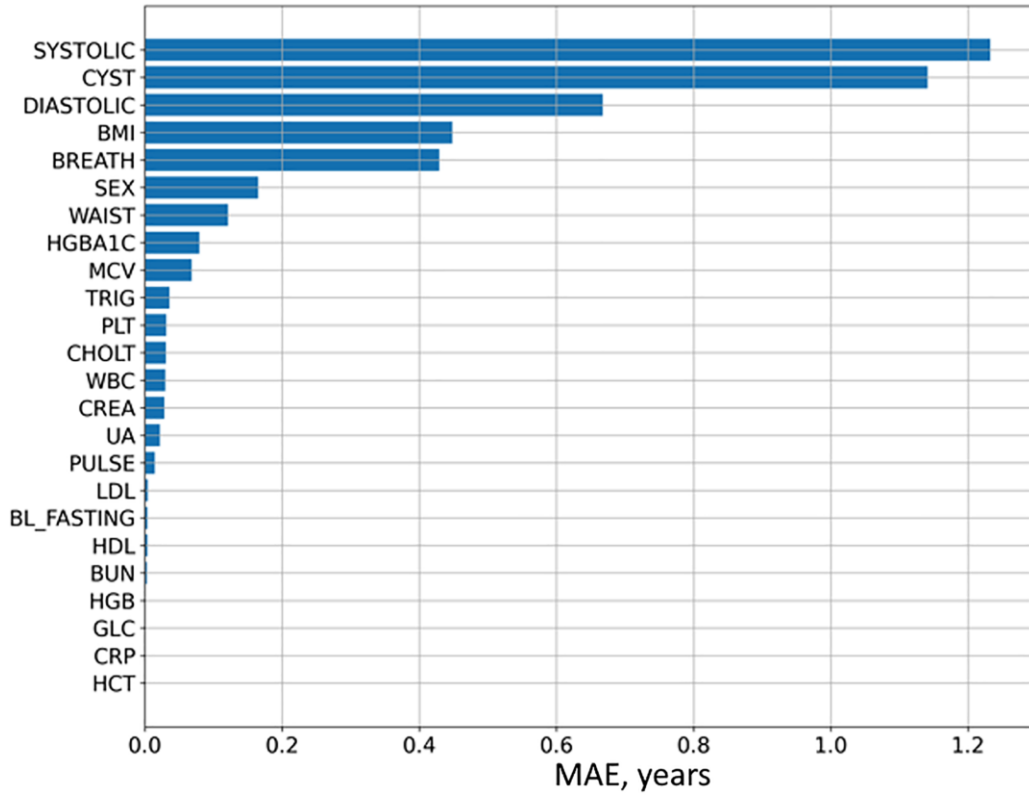
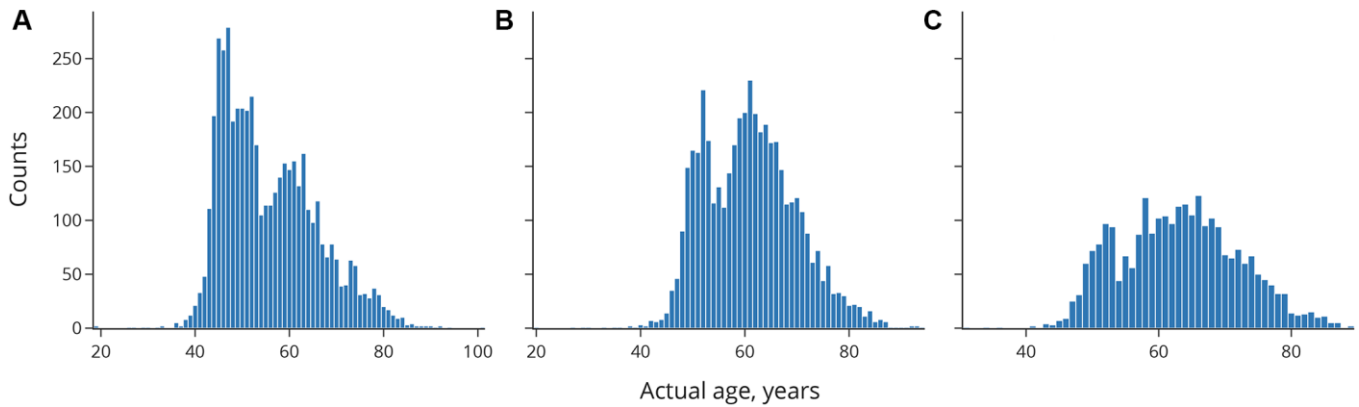


SUPPLEMENTARY FIGURES



Supplementary Figure 1. Permutation feature importance analysis was carried out to determine the features our aging clock pays the most attention to during age prediction. The importance of a feature is judged based on the drop in the MAE of the model when a feature's value is shuffled in the test set.



Supplementary Figure 2. Age distribution in the three cohorts used in this study. (A) Training set ($N = 4846$), mean age is 55.7 years (B) Test set ($N = 4451$), mean age is 61.0 years (C) Discovery set ($N = 2617$), mean age is 63.0 years.