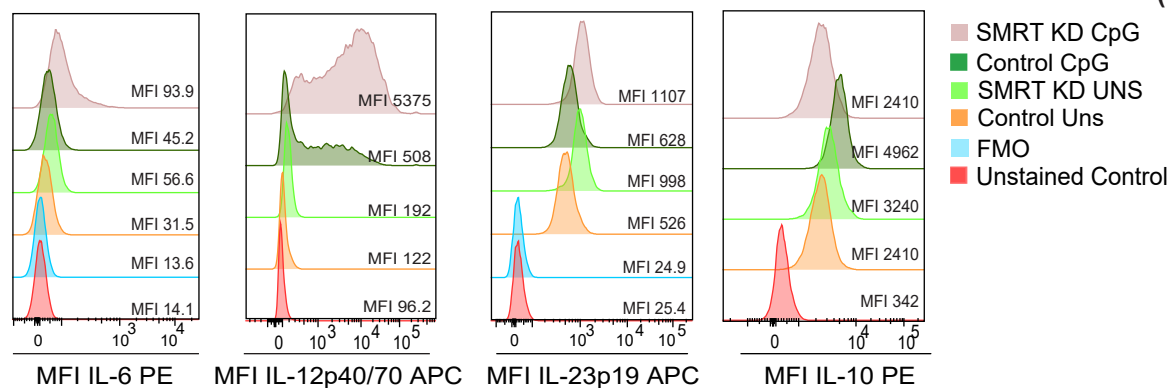
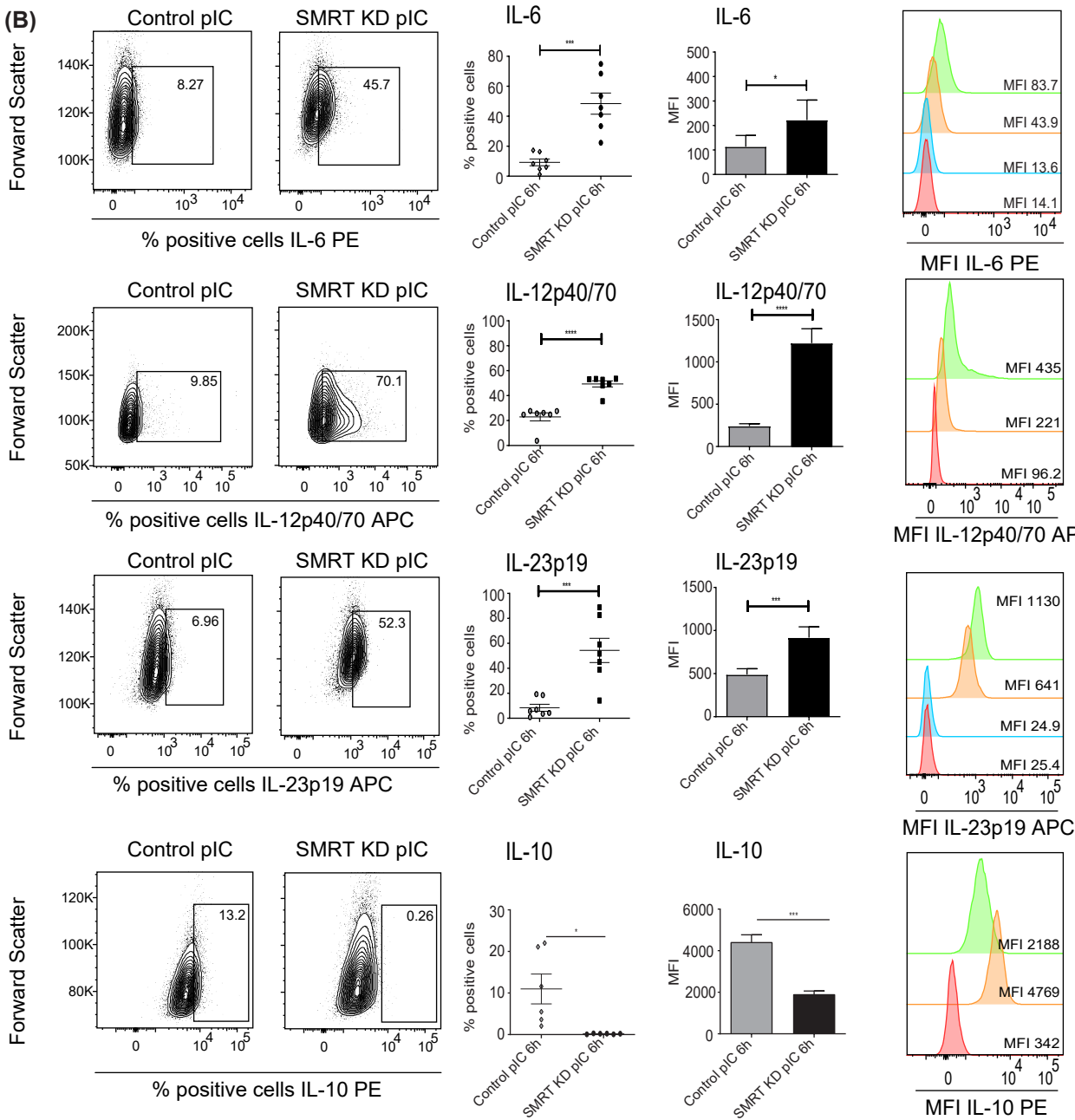


Supplementary Figure 3

(A)



(B)



(C)

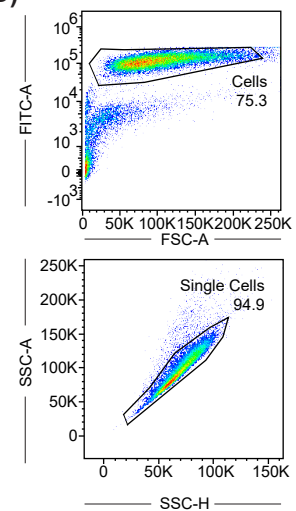


Figure S3. SMRT depleted cDC1 DCs produce enhanced inflammation upon TLR stimulation. (A) Histograms depicting MFI of pro-inflammatory cytokine IL-6, IL-12p40, IL-23p19, and the anti-inflammatory cytokine IL-10 in unstimulated and 6h CpG stimulated control and SMRT KD cDC1 compared to FMO and unstained controls. **(B)** Contour plot, scatter dot plot, bar plot, and histogram showing cell population, percent positive cells and MFI shifts of pro-inflammatory cytokines IL-6, IL-12p40, IL-23p19, and the anti-inflammatory cytokine IL-10 in 6h pIC stimulated control and SMRT KD cDC1 compared to their respective FMO and unstained controls (n=6-7). For staining IL12p40 we did not use any other fluorochrome in the panel. Thus unstained is considered as FMO here. **(C)** Representative figure showing the gating strategy used for all intracellular cytokine analysis. First gate was set on FSC-A and FITC since the cell line has a GFP reporter, and then we discriminated doublets by gating SSC-A and SSC-H.