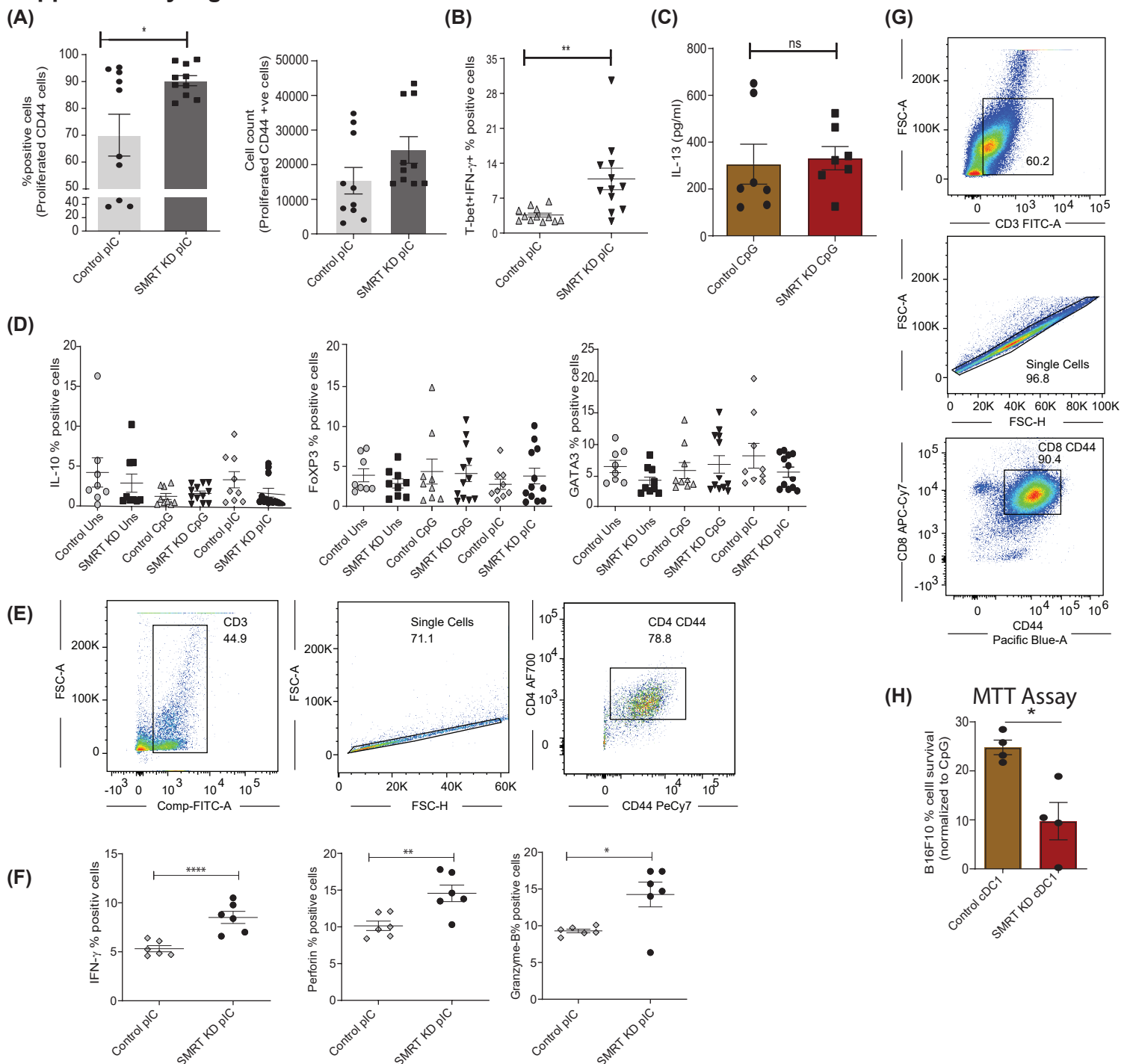


## Supplementary Figure 5



**Figure S5. SMRT KD cDC1 increased Th1 and Th17 polarization ex vivo in CD4+ T-lymphocytes and enhanced cytotoxic T-cell activity in CD8+ T-lymphocytes.** (A) Scatter plot with bar depicting proliferated CD44+ OT-II Th-cells co-cultured with control and SMRT KD cDC1 treated with OVA 323-339 peptide overnight followed by pIC stimulation (n=10). (B) Dot plots representing co-cultured OT-II Th-cells showing signature transcription factor and cytokine for Th1, T-bet and IFN- $\gamma$  response in pIC stimulated condition (n=12). (C) Bioplex cytokine assay depicting quantification of IL-13 cytokine secreted in the culture supernatant of OT-II Th-cells which were co-cultured with control and SMRT KD DCs pulsed with OT-II peptide and challenged with CpG (n=7). (D) Dot plots representing co-cultured OT-II Th-cells showing IL-10, FoxP3, and GATA3 expressing T-cells co-cultured with control and SMRT KD DCs in unstimulated, CpG stimulated, and pIC stimulated condition (n=8-12). (E) Representative image showing back gating used for flow cytometry analysis of co-cultured OT-II T-cells. (F) Dot plots representing co-cultured OT-I T-cells showing IFN- $\gamma$ , granzyme-B, and perforin in pIC stimulated condition (n=6). (G) Representative figure showing back gating used for flow cytometry analysis of co-cultured OT-I T-cells. (H) Scatter plot with bar representing percent cell survival of B16F10 cells loaded with OT-1 T cells co-cultured with control or SMRT KD cDC1 (n=4).

\* $p \leq 0.05$ , \*\* $p \leq 0.01$  and \*\*\* $p \leq 0.001$ . p-value has been calculated using two tailed unpaired student's t-test. Data shown in figure is combined from 3 independent experiments [A], from 4 independent replicates [B], from 3 independent replicates [C], from 2 independent replicates [D], 2 independent replicates [F] and 4 independent replicates [H]. Error bars represent SEM.