

Table S1 The Newcastle-Ottawa Scale for quality assessment of screened studies

Author, year	Selection			Outcome of interest not present at the start of the study	Comparability		Exposure		Total score
	Representativeness of exposed cohort	Selection of non-exposed cohort	Ascertainment of exposure		Comparability of cohort	Ascertainment of outcomes	Sufficient follow-up time	Adequacy of follow-up	
Fujimoto, 2017	*	*	*	*	**	*	*		8
Kanai, 2018	*	*	*		**	*	*		7
Fujimoto, 2019	*	*	*	*	**	*	*		8
Shibaki, 2019	*	*	*		**	*	*		7
Byeon, 2019	*	*	*		**	*	*		7
Nakanishi, 2019	*	*	*		*	*			5
Fujita, 2020	*	*	*		*	*			5
Ikeda, 2020	*	*	*	*	**	*	*		8
Nishiyama, 2020	*	*	*		**	*	*		7
Shibaki, 2020	*	*	*		*	*	*		6
Ichimura, 2022	*	*	*		*	*	*		6
Takahara, 2021	*	*	*		*	*			5
Yamamoto, 2021	*	*	*		*	*	*		6
Tasaka, 2021	*	*	*		**	*	*		7
Yamaguchi, 2021	*	*	*		**	*	*		7
Yamaguchi, 2021	*	*	*		*	*	*		6
Isono, 2021	*	*	*		**	*	*		7

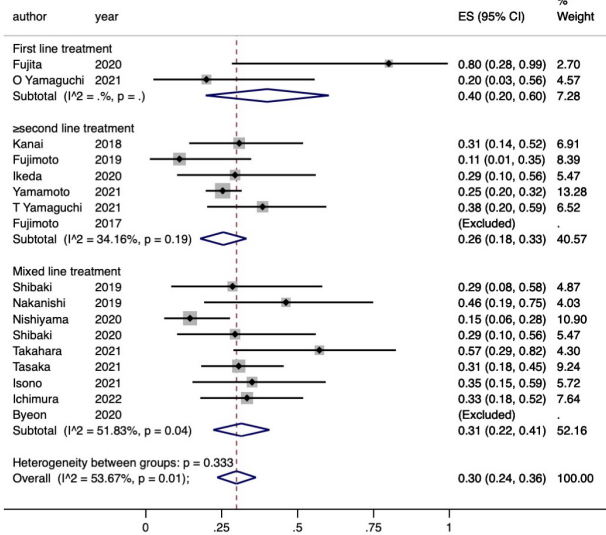
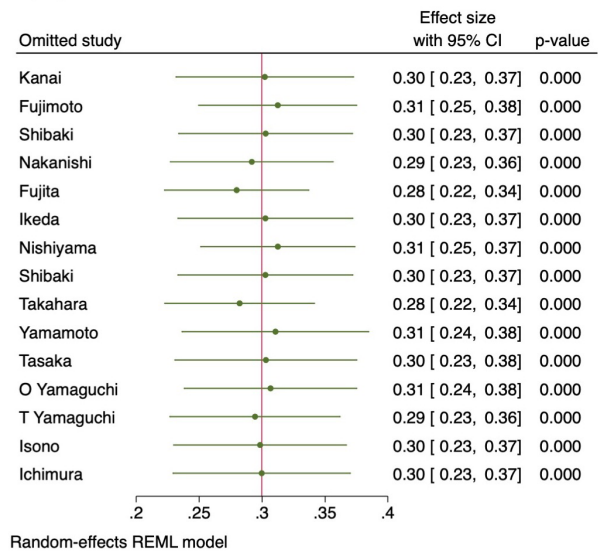
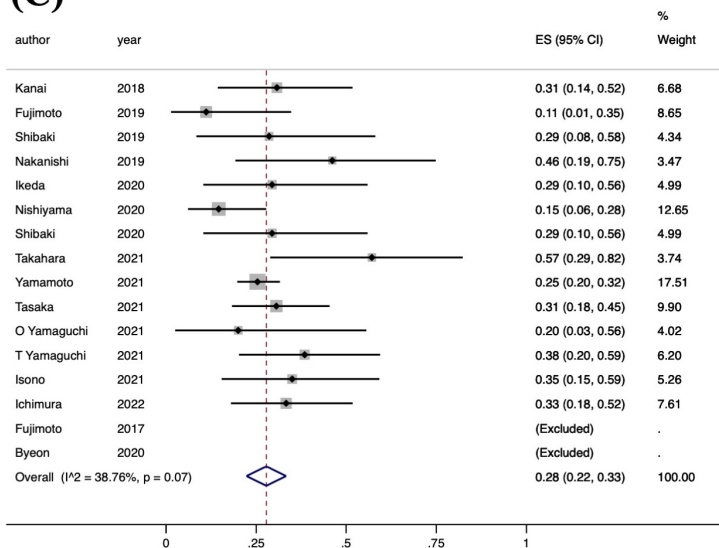
(A)**(B)****(C)**

Figure S1 Forest plots of any-grade ICIP rates in NSCLC patients with pre-existing ILD. (A) Subgroup analysis according to the treatment line (first line, ≥second line, and mixed line); (B) Leave-one-out analysis; (C) Modified any-grade ICIP rate after sensitivity analysis. ICIP, immune checkpoint inhibitor-associated pneumonitis; NSCLC, non-small cell lung cancer; ILD, interstitial lung disease.

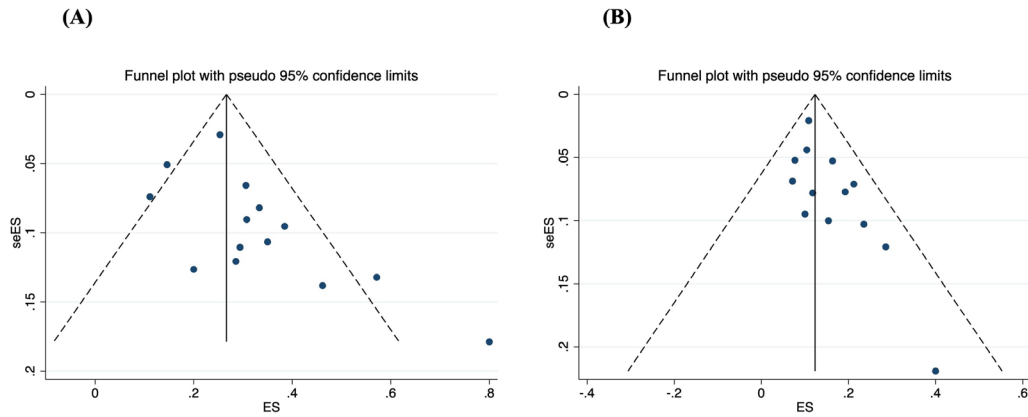


Figure S2 Funnel plots for publication bias in (A) any-grade ICIP rate and (B) grade 3–5 ICIP rate for NSCLC patients with pre-existing ILD. ICIP, immune checkpoint inhibitor-associated pneumonitis; NSCLC, non-small cell lung cancer; ILD, interstitial lung disease.

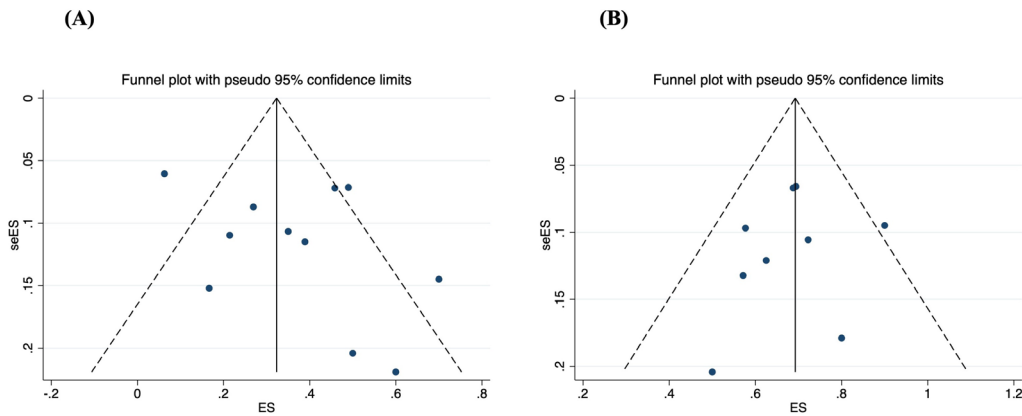


Figure S3 Funnel plots for publication bias in (A) ORR and (B) DCR for NSCLC patients with pre-existing ILD. ORR, objective response rate; DCR, disease control rate; NSCLC, non-small cell lung cancer; ILD, interstitial lung disease.

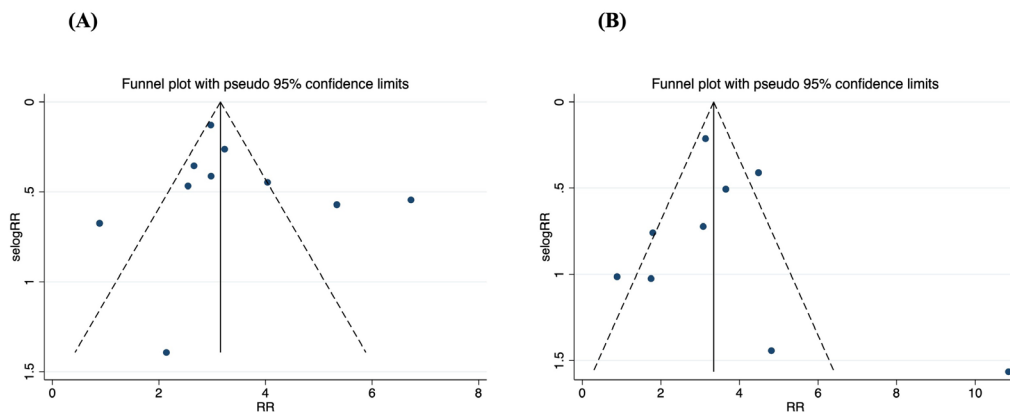


Figure S4 Funnel plots for publication bias in (A) any-grade ICIP rate and (B) grade 3–5 ICIP rate in NSCLC patients with versus without pre-existing ILD. ICIP, immune checkpoint inhibitor-associated pneumonitis; NSCLC, non-small cell lung cancer; ILD, interstitial lung disease.

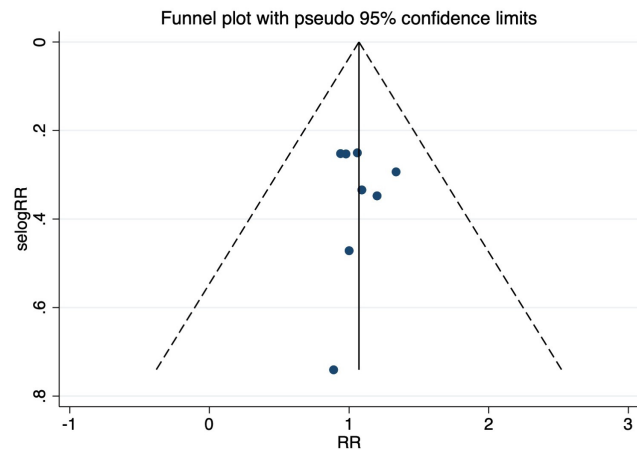


Figure S5 Funnel plots for publication bias in any grade ICIP rate in patients with versus without UIP patterns. ICIP, immune checkpoint inhibitor-associated pneumonitis; NSCLC, non-small cell lung cancer; UIP, usual interstitial pneumonia.