

Therapeutic targets for refractory epilepsy

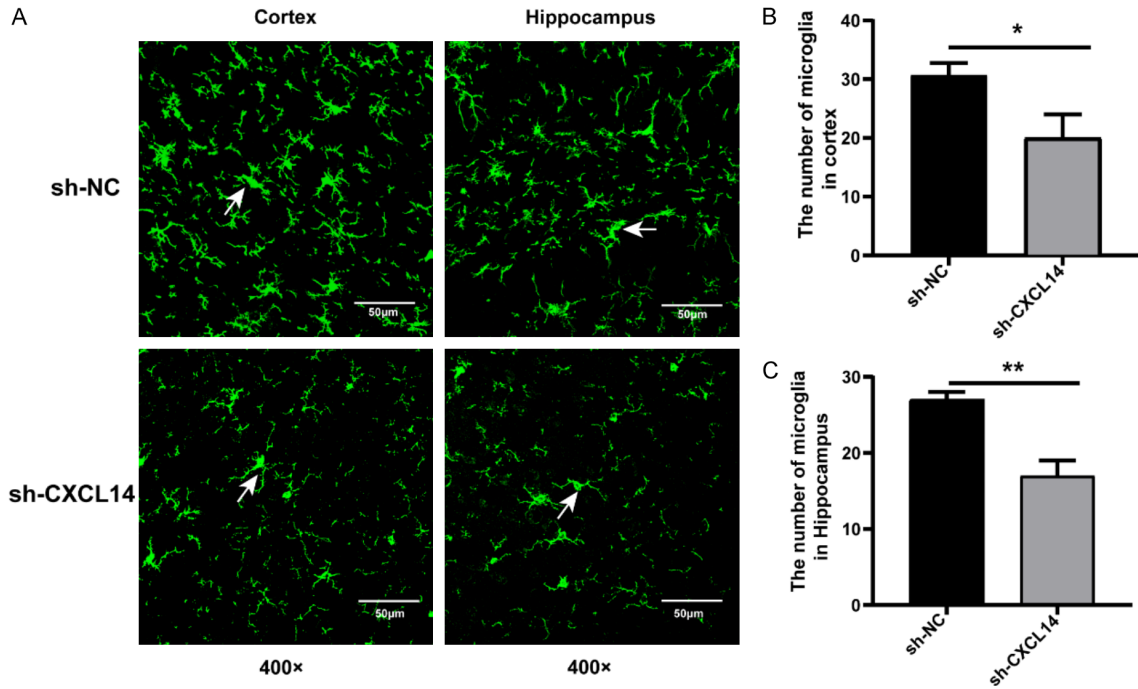


Figure S1. CXCL14 attenuates microglial activation 72 hours after seizures. A demonstrates the activation of microglia after 72 hours of seizure on the basis of CXCL14 knockdown. A. Cortical and hippocampal regions with Iba-1 positive cells were observed using fluorescence microscopy (green; AlexaFluor-488 staining). Iba-1 positive cells are indicated by white arrows. Scale bars: 50 μm for 400 \times . B, C. Statistical graphs of the number of microglia in cortex and hippocampus ($*P<0.05$, $**P<0.01$, means \pm standard error of mean (SEM), $n = 3$ per group).