

Figure S1. Biofilm formation for three *Burkholderia pseudomallei* strains. There was no significant difference in biofilm formed. ns, not significant.

JW270

JW270 Δ BPSS2185

JW270 Δ BPSS2185
(pBHR2-BPSS2185)

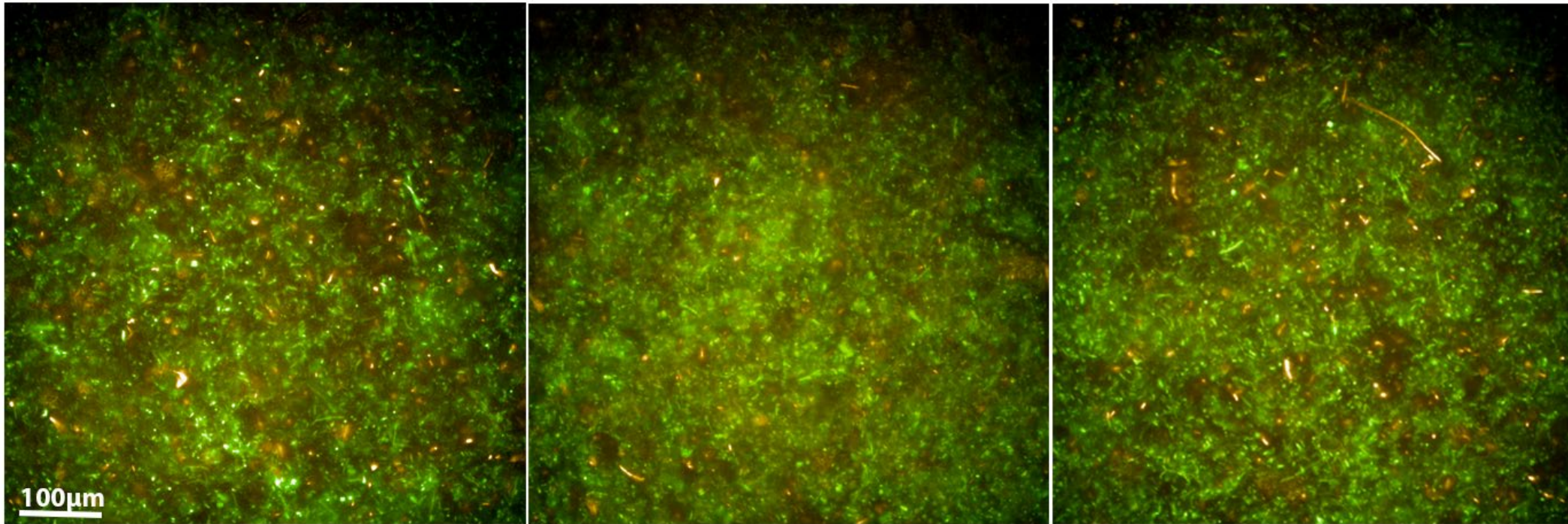


Figure S2. Fluorescent microscope images for the cells washed and stained with SYBR green to determine viability of cells after eDNA export in Fig. 5a. A scale bar of 100 μ m is shown in white at the bottom left.