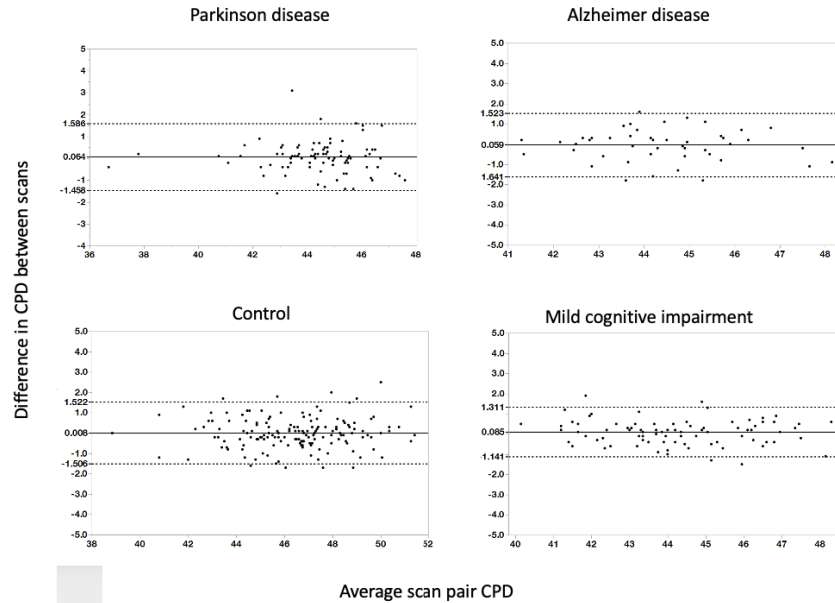


Supplementary Figure 1: Bland-Altman plots of average capillary perfusion density



Supplementary Figure 1: Bland-Altman plots for average capillary perfusion density: plotting the average of each pair of repeated scans against the difference between the constituent values of said pair of scans. The limits of agreement, $1.96 + 1.96\sigma$ and -1.96σ for difference, is plotted in the dotted lines.