

Supplementary Material

<i>Supplementary Table 1. Number of first visits per trimester.</i>	<i>2</i>
<i>Supplementary Table 2. Number of new admissions according to the type of visit.</i>	<i>2</i>
<i>Supplementary Table 3. Number of new diagnoses per trimester.</i>	<i>2</i>
<i>Supplementary Table 4. Diagnostic delay in the different trimesters.</i>	<i>3</i>
<i>Supplementary Figure 1. Diagnostic delay in the different trimesters.</i>	<i>4</i>

Supplementary Table 1. Number of first visits per trimester.

Trimester definitive diagnosis	Number of first visits per trimester Control group N (%)	Number of first visits per trimester Covid group N (%)	p value
<i>March-May</i>	81 (34.6)	21 (15.3)	< 0.001
<i>June-August</i>	46 (19.7)	36 (26.7%)	
<i>September-November</i>	54 (23.1)	55 (40.1)	
<i>December-February</i>	52 (22.2)	23 (16.8)	

Missing data for 1 patient in Control group and for 2 patients in Covid group.

Supplementary Table 2. Number of new admissions according to the type of visit.

Type of consultation	Number of visits Control group N (%)	Number of visits Covid group N (%)	p value
<i>New diagnosis</i>	147 (62.8)	108 (78.8)	0.003
<i>Second opinion</i>	5 (2.1)	0 (0.0)	
<i>Center change</i>	48 (20.5)	12 (8.8)	
<i>Single access</i>	34 (14.5)	17 (12.4)	

Supplementary Table 3. Number of new diagnoses per trimester.

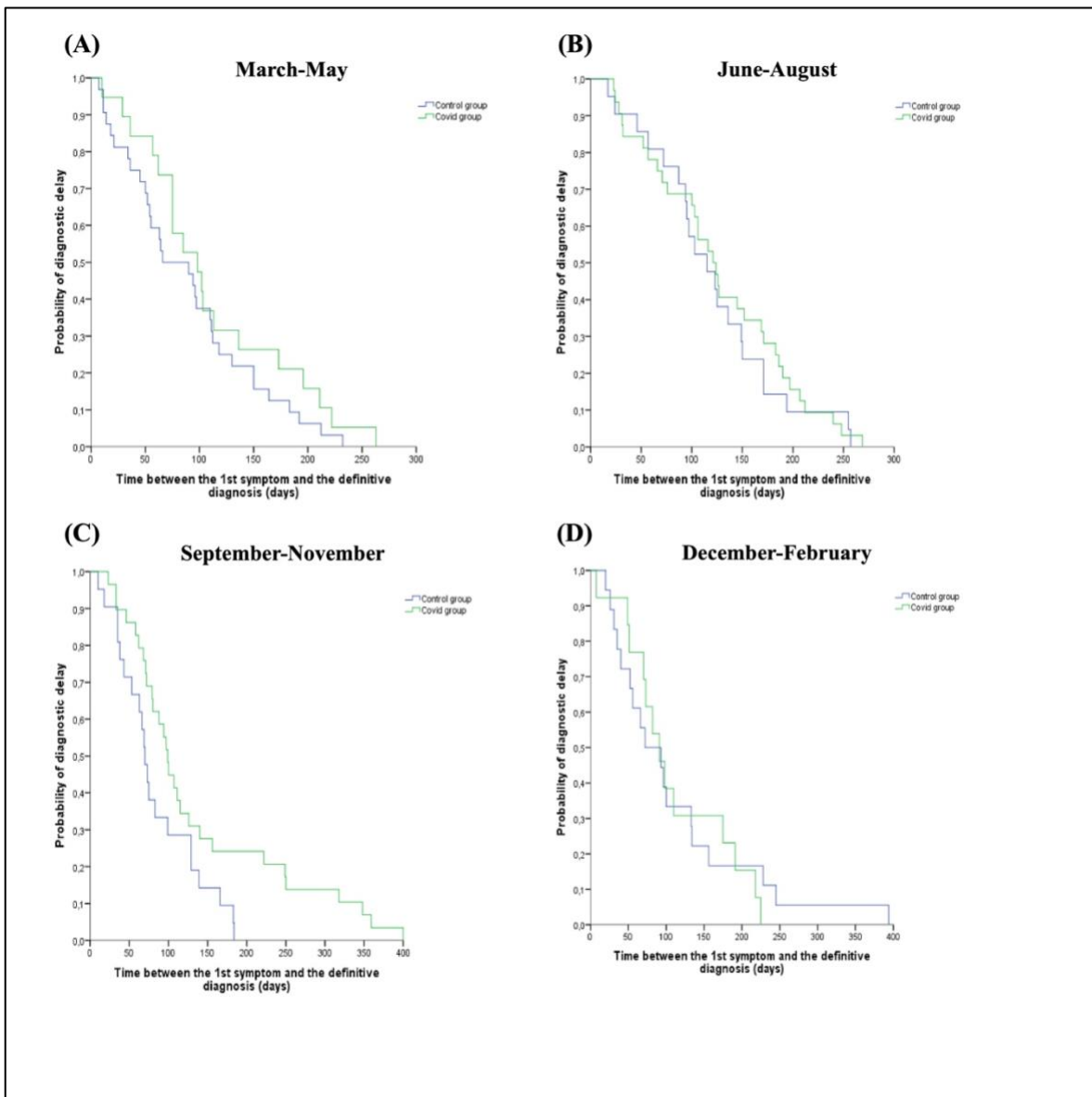
Trimester definitive diagnosis	Number of new diagnoses per trimester Control group N (%)	Number of new diagnoses per trimester Covid group N (%)	p value
<i>March-May</i>	33 (35.9)	14 (15.1)	0.005
<i>June-August</i>	22 (23.9)	33 (35.5)	
<i>September-November</i>	20 (21.7)	32 (34.4)	
<i>December-February</i>	17 (18.5)	14 (15.1)	

Supplementary Table 4. Diagnostic delay in the different trimesters.

Trimester diagnosis	definitive	Time to diagnosis in Control group Median time in days (95% CI)	Time to diagnosis in Covid group Median time in days (95% CI)	p value
<i>March-May</i>		66.00 (23.04-108.96)	98.00 (59.61-136.39)	0.235
<i>June-August</i>		115.00 (76.12-153.88)	121.00 (93.28-148.72)	0.659
<i>September-November</i>		70.00 (59.53-80.47)	99.00 (88.45-109.55)	0.035
<i>December-February</i>		72.00 (15.87-128.13)	91.00 (61.64-120.36)	0.843

Abbreviation: CI = Confidence interval.

Supplementary Figure 1. Diagnostic delay in the different trimesters.



Kaplan-Meier curves representing the time from first symptom to definitive diagnosis in the trimester March-May (A), June-August (B), September-November (C), and December-February (D) in Covid group (green) and Control group (blue).