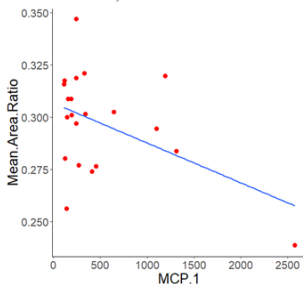
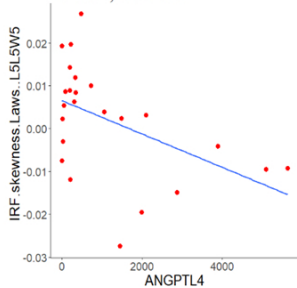


PCC=-0.46, p=0.03, $\beta_0=38.01$, $\beta_1=-11.3$,
 $R^2=0.22$, RSE=2.43



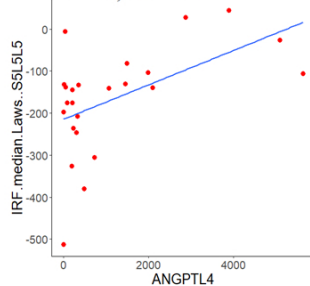
(a)

PCC=-0.49, p=0.02, $\beta_0=131.1$, $\beta_1=-61.5$,
 $R^2=0.24$, RSE=3.87



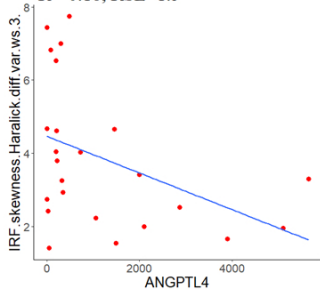
(b)

PCC=0.53, p=0.008, $\beta_0=115.1$, $\beta_1=-6.75$,
 $R^2=0.28$, RSE=2.42



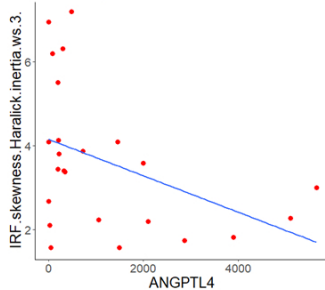
(c)

PCC=-0.42, p=0.04, $\beta_0=250.2$, $\beta_1=-35.1$,
 $R^2=0.18$, RSE=1.5



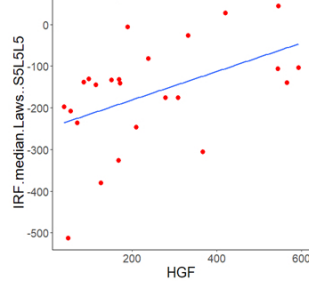
(d)

PCC=-0.42, p=0.04, $\beta_0=265.6$, $\beta_1=-40.9$,
 $R^2=0.17$, RSE=3.91



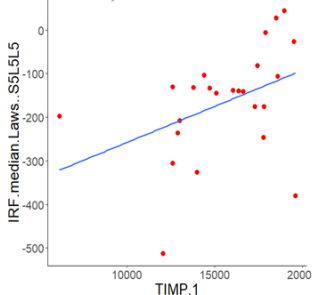
(e)

PCC=0.47, p=0.02, $\beta_0=354.16$, $\beta_1=0.65$,
 $R^2=0.22$, RSE=4.8



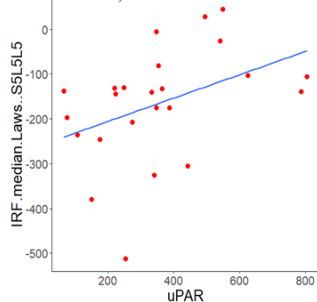
(f)

PCC=0.41, p=0.004, $\beta_0=17.05$, $\beta_1=9.95$,
 $R^2=0.17$, RSE=4.9



(g)

PCC=0.59, p=0.04, $\beta_0=462.38$, $\beta_1=0.64$,
 $R^2=0.35$, RSE=3.4



(h)